

ARA-DAC Weekly Analysis Result: 2249 (GFA)

Technical Report

GPS Week: 2249 (GFA)

<http://geolabpasaia.org/gnss/ARA-euref/>

ARA-DAC details:

Contact person: J. Zurutuza

Contact mail: geodesia@aranzadi.eus

Report generated on 2023/03/04 at 18:30:53

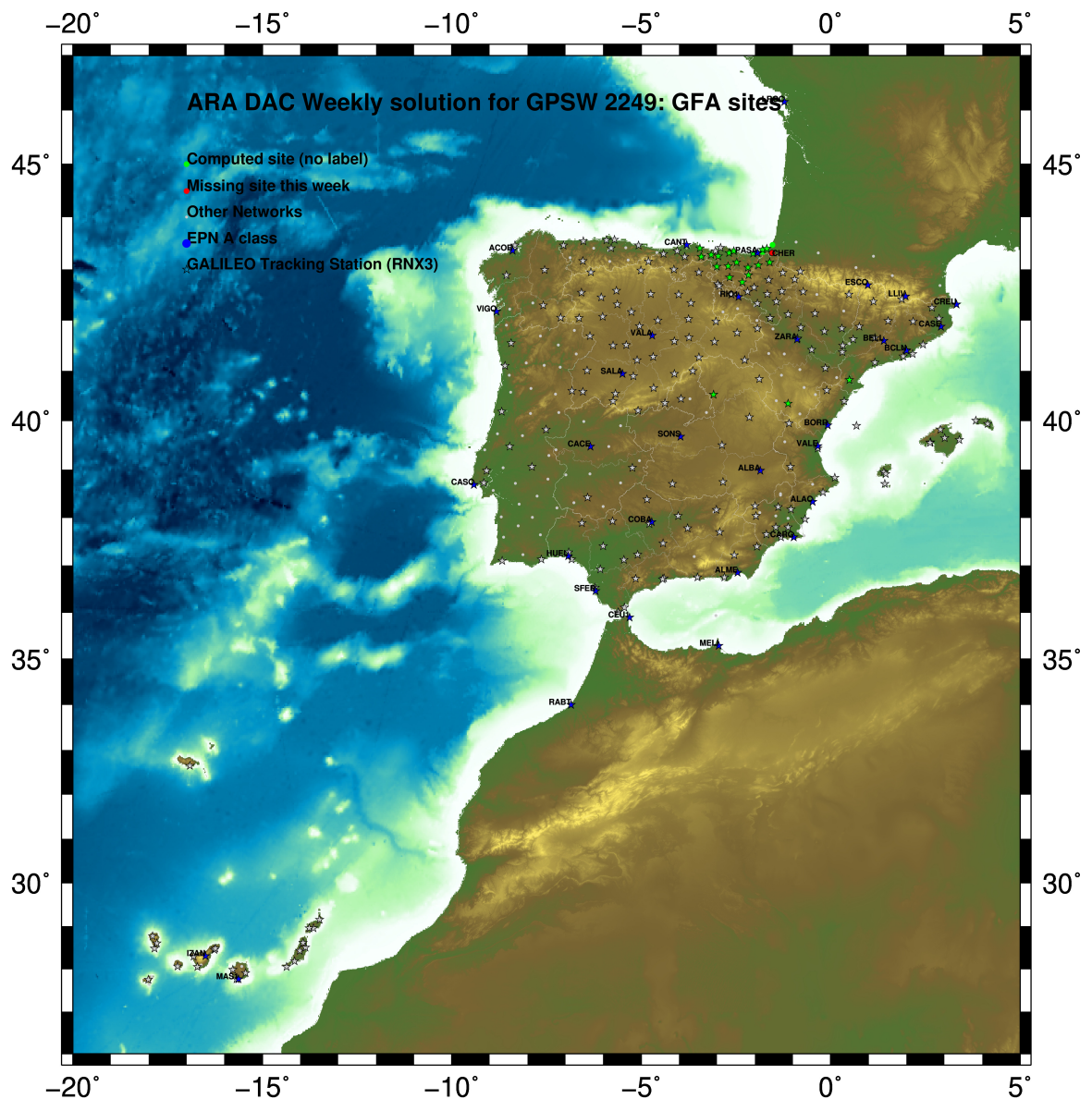


ARANZADI zientzia elkartea
sociedad de ciencias . society of sciences . société de sciences

1 Introduction

In may 2015 ARA (EUREF's acronym of the ARANZADI's Department of Applied Geodesy), kicks off as a EUREF's Operational Center. In July 2015, the Densification solutions ARA computes routinely in a weekly basis start being submitted to the EUREF's EPN Densification Project.

2 Map of Computed Sites



GM 2023 Mar 04 18:30:48

Fig.1: Computed Sites for GPS Week2249 (GFA)

3 Main Computation Parameters

The main parameters considered in the ARA analysis follow strictly the EPN recommendations.

- Preprocessing: Independent baselines are defined by the criterion of maximum common observations. Cycle slips are fixed with the MAUPRP program, analysing triple phase differences for each independent baseline. If MAUPRP does not fix all slips for one station, that station is edited out.
- Basic Observable : Carrier phase, L_1 and L_2 ; a priori sigma of single differences:0.002 m.
 - sampling (for ambiguity resolution): 30 s
 - sampling (for final processing): 180 s
 - Systems: GPS+GLONASS observations are used (Galileo is used if available starting GPS week 1986)
- Modelled observable: Double differences of carrier phase using different combinations based on the distance.
- Ground antenna phase center calibrations: Group APCV used from the PCV_COD.I20 file and individual calibrations from EPNC_20.ATX. EPN_A class sites (CRD + VEL) IGS20 used to define the reference frame (no EPN release is available at the time this report is generated). Following the EUREF guidelines, no other individual calibrations are included in the analysis starting GPSW 2238 (IGS20).
- Troposphere:
 - minimum elevation is 3 deg.; elevation dependent weighting.
 - VMF3 mapping function. ZPD parameters are estimated using the VMF3 mapping function.
 - CHENHER gradient estimation model.
- Ionosphere: no a priori model, ionospheric effect almost removed by iono free combination.
- Ocean Loading: FES2014b (Scherneck).
- Atmospheric loading: not corrected, following the latest recommendations for IGS20 products.
- Tidal displacements:
 - Mean pole model : IERS2010_v1.2.0
 - Subdaily pole model: DESAI2016
 - Nutation model : IAU2000R06

4 Estimated Parameters

- Adjustment: Least Squares
- Rejection Criteria: 3*rms of single differences, in the weekly combination of daily normal equations (ADDNEQ)
- Station coordinates: minimum constraints (MC) to EPN A class sites (only translations).
- Troposphere: 3 deg. After having obtained coordinates valid for the entire week, tropospheric zenith delay is solved at each site at intervals of 1 hour throughout the week, holding the coordinates constrained at the weekly values.
- Ionospheric: second and third "High Order Ionosphere (HOI)" corrections used, using CODE files, to improve Ambiguity Resolution.
- Satellite clock bias: not estimated because are eliminated by double differencing the phase data.

- Receiver clock bias: not estimated because are eliminated by double differencing the phase data.
- Orbits and ERPs: CODE's orbits and ERP for both rapid and final solutions. DE421 planetary ephemeris and JGM3 Earth geopotential model is used.
- Ambiguity: an advanced ambiguity resolution (AR) scheme is included:
 - Code-Based Widelane (WL) and Narrow Line (NR) AR for baselines shorter than 6000km, a Melbourne-Wuebbena wide-lane and narrow-lane AR is computed.
 - Phase-Based Widelane (L_5) AR for baselines shorter than 200km, the code-based wide-lane AR is replaced by a phase-only wide-lane with a subsequent narrow-lane AR.
 - Quasi-Ionosphere-Free (QIF) AR for the remaining real-valued ambiguities for baselines shorter than 2000km.
 - Direct L_1/L_2 AR for baselines shorter than 20km
- AR Verification: Each baseline is processed by introducing the resolved integer ambiguities and checking the residuals. If there is any problem, the ambiguities are re-initialized.

5 Computed Coordinates

In this section the adjusted coordinates are summarized. Note that the sites with an A flag are the computed ones, whereas sites flagged as W are the ones used in the Minimal Constraints condition.

5.1 IGS20

The Reference Frame considered in this section is a PRELIMINARY IGS20, based on the previously used IGB14 solution.

ARA FINAL WEEKLY COMBINATION: FINAL ORBITS 04-MAR-23 15:48

LOCAL GEODETIC DATUM: IGS20 EPOCH: 2023-02-15 11:59:45

NUM	STATION NAME	X (M)	Y (M)	Z (M)	FLAG	SYSTEM
4	ACOR 13434M001	4594489.51794	-678367.36377	4357066.32161	W	GRE
39	ALDA 19383M001	4687280.11454	-190876.49543	4308106.99762	A	GRE
50	ALSA 19419M001	4677250.79197	-176770.32401	4319079.91883	A	GRE
53	AMUR 19388M001	4661499.40566	-244591.18722	4332269.92483	A	GRE
100	BIAZ 10074M002	4634456.00390	-124344.90638	4365785.49902	A	GR
101	BIDA 00000M000	4644177.77528	-145778.25439	4354832.52327	A	GR
113	BRZR 19387M001	4662220.94247	-220769.82888	4333309.47913	A	GRE
104	CACE 13447M001	4899866.46417	-544566.96605	4033770.25047	W	GRE
116	CANT 13438M001	4625924.27437	-307096.16609	4365771.60516	W	GRE
162	CREU 13432M001	4715420.08035	273178.12862	4271946.88890	W	GRE
204	EBRE 13410M001	4833519.94294	41537.46163	4147461.76116	A	GRE
180	ELGE 19353S001	4657557.34832	-202241.40149	4338991.92987	A	GRE
182	EMAZ 17001M001	4645924.16753	-276949.79984	4347759.61557	A	GRE
209	GERN 19389M001	4642811.27324	-217222.85259	4353278.91765	A	GRE
257	HOND 15012M002	4640529.27165	-145676.91611	4358781.79951	A	GRE
235	IGEL 19352S001	4645951.38298	-165574.43435	4352550.46645	A	GRE
240	ISPS 19484M001	4640596.43729	-206963.70765	4356391.95977	A	GRE
245	KAST 19499M001	4646949.03082	-240747.19920	4348015.03465	A	GRE
252	LARE 19440M001	4632831.91176	-279026.07292	4360314.47526	A	GRE
256	LAZK 19354S001	4666098.29789	-178186.12303	4330463.71428	A	GRE
261	LEIT 19428M001	4663520.88916	-155858.64816	4334519.92810	A	GRE
334	ORON 19427M001	4659695.73540	-130864.66676	4338948.92986	A	GRE
345	PASZ 19351S001	4644909.01540	-156644.99898	4353623.12065	A	GRE
493	PASA 19351S001	4644909.01541	-156644.99899	4353623.12064	W	GRE
553	RID1 13448M002	4708446.78074	-199490.21248	4284089.77770	W	GRE
558	SALA 13469M001	4803054.44302	-462131.00076	4158379.12213	W	GRE
566	SCDA 10088M002	4639940.46331	-136224.87584	4359552.46464	A	GRE
418	SOPU 19386M001	4643997.86230	-255913.83727	4350063.18373	A	GRE
443	TERU 13487M001	4867391.27401	-95523.27481	4108341.72758	A	GRE
493	VITO 19385M001	4679397.65622	-218436.43427	4314898.41090	A	GRE
752	YEBE 13420M001	4848724.52362	-261631.85743	4123094.37359	A	GRE
755	ZARA 13462M001	4773803.12077	-73505.91579	4215454.13855	W	GRE

5.2 ETRF2000 (ETRS89) Coordinates

European Terrestrial Reference System, 1989 (ETRS89) is realized by ETRF2000 (Boucher and Altamimi, 2011) and (Altamimi, 2017).

CONVERT TO ETRF2000 04-MAR-23 15:48

LOCAL GEODETIC DATUM: ETRF2000 EPOCH: 2023-02-15 11:59:45

NUM	STATION NAME	X (M)	Y (M)	Z (M)	FLAG	SYSTEM
4	ACOR 13434M001	4594489.85133	-678367.97453	4357065.85773	W	
39	ALDA 19383M001	4687280.50813	-190877.11616	4308106.53260	A	
50	ALSA 19419M001	4677251.18827	-176770.94353	4319079.45484	A	
53	AMUR 19388M001	4661499.79409	-244591.80506	4332269.46125	A	
100	BIAZ 10074M002	4634456.41072	-124345.52075	4365785.03935	A	
101	BIDA 00000M000	4644178.17843	-145778.86995	4354832.06249	A	
113	BRZR 19387M001	4662221.33411	-220770.44676	4333309.01582	A	
104	CACE 13447M001	4899866.78985	-544567.61207	4033769.76261	W	
116	CANT 13438M001	4625924.65722	-307096.77992	4365771.14373	W	
162	CREU 13432M001	4715420.53191	273177.50615	4271946.42770	W	
204	EBRE 13410M001	4833520.35442	41536.82462	4147461.28689	A	
180	ELGE 19353S001	4657557.74383	-202242.01877	4338991.46720	A	
182	EMAZ 17001M001	4645924.55293	-276950.41595	4347759.15287	A	
209	GERN 19389M001	4642811.66690	-217223.46818	4353278.45602	A	
257	HOND 15012M002	4640529.67513	-145676.53125	4358781.33904	A	
235	IGEL 19352S001	4645951.78336	-165575.05018	4352550.00526	A	
240	ISPS 19484M001	4640596.83254	-206964.32296	4356391.49847	A	
245	KAST 19499M001	4646949.42099	-240747.81533	4348014.57235	A	
252	LARE 19440M001	4632832.29786	-279026.68749	4360314.01363	A	
256	LAZK 19354S001	4666098.69489	-178186.74124	4330463.25121	A	
261	LEIT 19428M001	4663521.28941	-155859.26602	4334519.46555	A	
334	ORON 19427M001	4659696.13927	-130865.28410	4338948.46797	A	
345	PASZ 19351S001	4644909.41703	-156645.61556	4353622.65966	A	
493	PASA 19351S001	4644909.41704	-156645.61557	4353622.65965	W	
553	RID1 13448M002	4708447.17132	-199490.83569	4284089.31077	W	
558	SALA 13469M001	4803054.78929	-462131.63550	4158378.64361	W	
566	SCDA 10088M002	4639940.86809	-136225.49088	4359552.00435	A	
418	SOPU 19386M001	4643998.25064	-255914.45309	4350062.72148	A	
443	TERU 13487M001	4867391.66447	-95523.91616	4108341.24860	A	
493	VITO 19385M001	4679398.04673	-218437.05414	4314897.94617	A	
752	YEBE 13420M001	4848724.89345	-261632.49706	4123093.89395	A	
755	ZARA 13462M001	4773803.52250	-73506.54624	4215453.66779	W	

5.3 ETRF2014 (ETRS89) Coordinates

European Terrestrial Reference System, 1989 (ETRS89) is realized by ETRF2014 (Boucher and Altamimi, 2011) and (Altamimi, 2017).

```

CONVERT TO ETRF2014                                04-MAR-23 15:48
-----
LOCAL GEODETIC DATUM: ETRF2014      EPOCH: 2023-02-15 11:59:45
NUM  STATION NAME      X (M)      Y (M)      Z (M)      FLAG  SYSTEM
4    ACDR 13434M001    4594489.81097 -678368.01178 4357065.90963 W
39   ALDA 19383M001    4687280.46533 -190877.15478 4308106.58436 A
50   ALSA 19419M001    4677251.14553 -176770.98224 4319079.50665 A
53   AMUR 19388M001    4661499.75174 -244591.84360 4332269.51307 A
100  BIAZ 10074M002    4634456.36826 -124345.55984 4365785.09131 A
101  BIDA 00000M000    4644178.13594 -145778.90893 4354832.11441 A
113  BRZR 19387M001    4662221.29168 -220770.48538 4333309.06764 A
104  CACE 13447M001    4899866.74571 -544567.64848 4033769.81368 W
116  CANT 13438M001    4625924.61545 -307096.81839 4365771.19563 W
162  CREU 13432M001    4715420.48707 273177.46600 4271946.47971 W
204  EBRE 13410M001    4833520.30917 41536.78581 4147461.33839 A
180  ELGE 19353S001    4657557.70139 -202242.05748 4338991.51905 A
182  EMAZ 17001M001    4645924.51086 -276950.45444 4347759.20472 A
209  GERN 19389M001    4642811.62466 -217223.50690 4353278.50791 A
257  HOND 15012M002    4640529.63267 -145676.57024 4358781.39097 A
235  IGEL 19352S001    4645951.74092 -165575.08907 4352550.05716 A
240  ISPS 19484M001    4640596.79029 -206964.36173 4356391.55037 A
245  KAST 19499M001    4646949.37878 -240747.85395 4348014.62422 A
252  LARE 19440M001    4632832.25593 -279026.72603 4360314.06552 A
256  LAZK 19354S001    4666098.65227 -178186.78000 4330463.30305 A
261  LEIT 19428M001    4663521.24674 -155859.30487 4334519.51741 A
334  ORON 19427M001    4659696.09656 -130865.32306 4338948.51986 A
345  PAS2 19351S001    4644909.37457 -156645.65449 4353622.71158 A
493  PASA 19351S001    4644909.37458 -156645.65450 4353622.71157 W
553  RIO1 13448M002    4708447.12832 -199490.87419 4284089.36247 W
558  SALA 13469M001    4803054.74605 -462131.67264 4158378.69495 W
566  SOA 10088M002    4639940.82560 -136225.52991 4359552.05629 A
418  SOPU 19386M001    4643998.20851 -255914.49167 4350062.77334 A
443  TERU 13487M001    4867391.61932 -95523.95434 4108341.29992 A
493  VITO 19385M001    4679398.00410 -218437.09270 4314897.99794 A
752  YEBE 13420M001    4848724.84908 -261632.53472 4123093.94523 A
755  ZARA 13462M001    4773803.47834 -73506.58491 4215453.71938 W

```

6 Quality Control

6.1 Mean and Daily Repeatabilities

In this section, the mean and daily repeatabilities of the sites are shown. Repeatabilities refer to the IGS20 solution and are given with respect to the Local frame (North-East-Up).

ARA FINAL WEEKLY COMBINATION: FINAL ORBITS 04-MAR-23 15:48

Station	#Days	Weekday 0123456	Repeatability (mm)		
			N	E	U
ACOR 13434M001	7	XXXXXX	0.82	0.61	2.32
ALDA 19383M001	7	XXXXXX	2.61	0.87	1.77
ALSA 19419M001	7	XXXXXX	3.13	0.82	6.71
AMUR 19388M001	7	XXXXXX	0.51	0.48	2.44
BLAZ 10074M002	7	XXXXXX	1.10	0.53	3.96
BIDA 00000M000	7	XXXXXX	0.98	0.51	1.42
BRZR 19387M001	7	XXXXXX	1.14	0.94	2.41
CACE 13447M001	7	XXXXXX	0.36	0.38	1.37
CANT 13438M001	7	XXXXXX	0.64	0.31	3.67
CREU 13432M001	7	XXXXXX	0.50	0.53	2.87
EBRE 13410M001	7	XXXXXX	0.69	0.41	2.14
ELGE 19353S001	7	XXXXXX	0.96	0.57	1.59
EMAZ 17001M001	7	XXXXXX	1.14	0.50	2.92
GERN 19389M001	7	XXXXXX	1.57	1.03	3.84
HOND 15012M002	7	XXXXXX	0.77	0.52	2.25
IGEL 19352S001	7	XXXXXX	0.25	0.54	1.68
ISPS 19484M001	7	XXXXXX	0.73	2.07	4.97
KAST 19499M001	7	XXXXXX	1.60	0.71	3.32
LARE 19440M001	7	XXXXXX	0.96	0.69	2.00
LAZK 19354S001	7	XXXXXX	2.95	1.55	7.44
LEIT 19428M001	7	XXXXXX	1.55	0.99	3.65
ORON 19427M001	7	XXXXXX	0.94	0.91	5.93
PAS2 19351S001	7	XXXXXX	0.65	0.35	2.06
PASA 19351S001	7	XXXXXX	0.67	0.35	2.02
RI01 13448M002	7	XXXXXX	1.16	0.81	2.05
SALA 13469M001	7	XXXXXX	0.75	0.49	1.94
SCDA 10088M002	7	XXXXXX	0.70	1.17	2.13
SOPU 19386M001	7	XXXXXX	1.88	0.99	2.66
TERU 13487M001	7	XXXXXX	0.43	0.75	2.19
VITD 19385M001	7	XXXXXX	0.49	0.47	2.84
YEBE 13420M001	7	XXXXXX	0.62	0.39	1.10
ZARA 13462M001	7	XXXXXX	0.69	0.77	1.59

Comparison of individual solutions:

ACOR 13434M001	N	0.82	-0.51	-0.55	0.72	0.60	-1.08	0.34	1.14
ACOR 13434M001	E	0.61	0.61	0.46	0.03	-0.10	-0.08	-1.03	-0.75
ACOR 13434M001	U	2.32	-1.55	2.46	0.25	-2.49	-0.41	-4.04	-1.04
ALDA 19383M001	N	2.61	-3.80	-4.37	1.13	-0.75	1.35	1.89	0.11
ALDA 19383M001	E	0.87	-0.78	1.85	-0.31	-0.08	0.28	0.41	-0.39
ALDA 19383M001	U	1.77	-0.14	0.12	-2.04	3.49	-1.54	0.15	0.03
ALSA 19419M001	N	3.13	-3.40	-4.41	2.04	-2.48	2.27	3.47	0.60
ALSA 19419M001	E	0.82	0.59	1.06	0.72	0.40	-1.01	-0.92	0.22
ALSA 19419M001	U	6.71	0.57	8.06	9.49	-1.11	-4.13	-5.59	-8.08
AMUR 19388M001	N	0.51	0.07	-0.51	-0.22	0.77	0.26	0.77	0.08
AMUR 19388M001	E	0.48	-0.85	0.52	-0.07	-0.13	0.05	0.64	-0.01
AMUR 19388M001	U	2.44	-0.16	0.24	3.04	-4.49	0.01	-0.65	-2.41
BLAZ 10074M002	N	1.10	-0.10	-1.25	-1.76	1.03	0.19	1.19	0.30
BLAZ 10074M002	E	0.53	-0.07	1.16	-0.17	0.44	0.27	0.19	-0.15
BLAZ 10074M002	U	3.96	0.44	4.23	5.51	-0.58	-2.71	-4.25	-4.45
BIDA 00000M000	N	0.98	0.05	-0.92	-1.81	0.41	0.54	0.95	0.52
BIDA 00000M000	E	0.51	-0.06	0.77	0.03	-0.69	0.38	0.33	0.48
BIDA 00000M000	U	1.42	-0.92	-1.49	1.50	-1.66	-0.94	1.51	-0.94
BRZR 19387M001	N	1.14	-0.42	-0.64	-1.06	-0.69	1.19	1.95	0.64
BRZR 19387M001	E	0.94	-0.71	0.96	-1.67	0.52	-0.22	0.88	0.10
BRZR 19387M001	U	2.41	2.10	-2.63	-1.55	-2.34	2.85	0.57	-2.67
CACE 13447M001	N	0.36	-0.75	-0.15	-0.15	-0.26	0.28	0.12	-0.07
CACE 13447M001	E	0.38	0.48	0.05	0.21	-0.25	-0.25	-0.31	-0.61
CACE 13447M001	U	1.37	0.73	-0.08	-1.31	-2.07	-1.15	-0.99	1.55
CANT 13438M001	N	0.64	-0.12	-0.87	-0.07	1.01	0.13	0.65	0.47
CANT 13438M001	E	0.31	-0.29	0.41	0.09	-0.39	0.21	-0.31	-0.18
CANT 13438M001	U	3.67	2.45	0.00	2.42	-1.35	-1.87	0.11	-7.98
CREU 13432M001	N	0.50	-0.29	-0.76	0.82	-0.14	0.13	0.03	0.37
CREU 13432M001	E	0.53	-0.28	0.17	-0.46	0.58	0.45	0.42	0.80
CREU 13432M001	U	2.87	1.10	1.28	2.65	4.75	-3.95	-1.11	0.16
EBRE 13410M001	N	0.69	-0.51	-1.20	-0.10	0.03	0.71	0.74	0.27
EBRE 13410M001	E	0.41	-0.09	0.25	0.32	0.31	0.37	0.75	0.12
EBRE 13410M001	U	2.14	1.01	2.47	0.50	0.44	-4.16	1.46	0.62
ELGE 19353S001	N	0.96	-0.43	-1.73	1.02	0.81	0.27	0.62	0.51
ELGE 19353S001	E	0.57	-0.32	0.97	0.47	-0.22	-0.01	-0.14	-0.77
ELGE 19353S001	U	1.59	0.99	-0.68	1.73	-1.15	-0.24	-2.07	-2.25
EMAZ 17001M001	N	1.14	-1.24	-1.39	1.83	0.49	0.38	0.47	0.58
EMAZ 17001M001	E	0.50	-0.03	0.62	-0.87	-0.35	0.23	-0.30	0.29
EMAZ 17001M001	U	2.92	2.57	-2.29	2.08	-4.91	-0.88	0.45	-3.17
GERN 19389M001	N	1.57	0.21	-2.74	1.61	1.31	-1.12	1.14	0.65
GERN 19389M001	E	1.03	0.49	1.08	-0.27	-0.72	-1.85	0.95	-0.09
GERN 19389M001	U	3.84	-6.30	3.55	2.42	-3.58	-1.21	1.47	-3.71
HOND 15012M002	N	0.77	-1.01	-1.08	0.34	0.67	-0.30	0.74	0.37
HOND 15012M002	E	0.52	0.01	0.17	-0.65	0.35	-0.03	0.51	0.89
HOND 15012M002	U	2.25	3.11	-3.13	-3.21	-0.40	-0.10	0.70	-0.15
IGEL 19352S001	N	0.25	-0.26	0.08	0.10	0.38	-0.17	0.05	-0.36
IGEL 19352S001	E	0.54	-0.46	0.74	-0.47	0.35	0.70	0.36	0.07
IGEL 19352S001	U	1.68	-1.11	-2.35	1.07	0.68	0.29	0.92	-2.78
ISPS 19484M001	N	0.73	0.07	0.39	-0.87	0.07	1.46	-0.27	0.29
ISPS 19484M001	E	2.07	0.32	2.13	-2.34	-0.12	-3.22	2.10	0.80
ISPS 19484M001	U	4.97	-3.30	1.20	-4.94	-3.19	-2.47	9.14	-3.41
KAST 19499M001	N	1.60	-0.65	-2.94	-0.04	1.67	0.80	0.73	1.52
KAST 19499M001	E	0.71	-0.12	0.81	0.96	-0.96	-0.38	-0.05	-0.59
KAST 19499M001	U	3.32	-2.00	-6.39	-0.06	-1.87	1.25	3.60	-1.80
LARE 19440M001	N	0.96	0.50	-0.54	-1.49	0.90	-0.15	1.07	0.94
LARE 19440M001	E	0.69	-0.23	-0.21	1.35	-0.30	0.20	-0.57	-0.70
LARE 19440M001	U	2.00	1.28	0.51	-1.65	-3.11	-0.80	0.95	-2.86
LAZK 19354S001	N	2.95	-0.43	-2.57	-5.80	0.77	1.67	2.23	1.82
LAZK 19354S001	E	1.55	0.41	-0.36	-3.15	0.72	1.38	1.09	0.75

LAZK	19354S001	U	7.44	5.96	8.80	6.87	1.18	-5.76	-6.78	-9.55
LEIT	19428M001	N	1.55	-2.03	-2.58	0.70	0.55	0.76	1.49	-0.37
LEIT	19428M001	E	0.99	0.43	1.56	0.97	-0.37	-1.45	-0.11	0.07
LEIT	19428M001	U	3.65	3.34	-6.89	-4.03	0.23	1.55	1.45	0.62
ORDN	19427M001	N	0.94	-1.54	-0.55	0.76	0.70	-0.78	0.96	-0.31
ORDN	19427M001	E	0.91	-0.66	1.94	-0.37	-0.07	0.20	-0.76	-0.04
ORDN	19427M001	U	5.93	-0.48	0.16	13.47	1.00	-4.89	-0.43	-2.00
PAS2	19351S001	N	0.65	-0.57	-0.48	-1.00	0.44	0.67	0.22	0.57
PAS2	19351S001	E	0.35	-0.08	-0.03	0.08	-0.03	0.60	0.20	0.56
PAS2	19351S001	U	2.06	1.88	-1.62	2.44	-2.23	-1.35	-0.00	-2.55
PASA	19351S001	N	0.67	-0.53	-0.49	-1.04	0.47	0.70	0.19	0.55
PASA	19351S001	E	0.35	-0.06	-0.05	0.08	0.02	0.61	0.13	0.58
PASA	19351S001	U	2.02	1.82	-1.65	2.48	-1.91	-1.72	-0.10	-2.36
RID1	13448M002	N	1.16	-0.58	-1.91	-0.09	0.22	0.46	1.96	-0.17
RID1	13448M002	E	0.81	-0.56	0.97	-0.62	0.89	0.45	-0.87	0.76
RID1	13448M002	U	2.05	2.08	0.62	0.26	1.81	-3.13	-2.50	-1.00
SALA	13469M001	N	0.75	0.14	-1.14	-0.50	0.76	0.33	0.63	-0.86
SALA	13469M001	E	0.49	-0.56	0.95	-0.02	-0.15	0.19	-0.41	-0.13
SALA	13469M001	U	1.94	-0.56	2.39	-1.13	-3.07	-0.85	-1.89	1.23
SCDA	10088M002	N	0.70	-0.64	-1.11	0.33	0.69	0.82	-0.02	0.15
SCDA	10088M002	E	1.17	-0.01	-1.14	-1.28	-0.48	1.85	0.98	0.84
SCDA	10088M002	U	2.13	0.63	2.36	0.95	0.20	-1.72	1.94	-3.69
SOPU	19386M001	N	1.88	0.80	-1.37	-3.35	0.59	0.78	1.78	1.85
SOPU	19386M001	E	0.99	-0.09	0.56	-2.01	-0.58	0.99	0.37	0.28
SOPU	19386M001	U	2.66	-0.36	-3.57	2.41	-1.64	-1.41	1.67	-4.01
TERU	13487M001	N	0.43	0.19	-0.26	0.08	0.30	-0.18	0.01	-0.95
TERU	13487M001	E	0.75	-0.44	0.32	0.64	0.55	1.48	-0.28	-0.34
TERU	13487M001	U	2.19	2.28	-2.31	1.33	3.57	-1.80	0.19	0.76
VITO	19385M001	N	0.49	-0.52	-0.27	-0.38	0.06	-0.19	0.96	-0.13
VITO	19385M001	E	0.47	-0.27	0.45	-0.32	-0.03	0.88	0.04	-0.44
VITO	19385M001	U	2.84	-0.12	-1.49	5.57	-3.20	-1.42	-0.58	-1.59
YEBE	13420M001	N	0.62	-0.55	-0.79	0.04	0.16	0.25	0.91	-0.69
YEBE	13420M001	E	0.39	-0.40	0.24	-0.56	0.15	0.59	0.03	-0.03
YEBE	13420M001	U	1.10	-2.48	0.28	-0.24	-0.66	-0.29	-0.40	-0.54
ZARA	13462M001	N	0.69	-0.74	-1.05	-0.05	-0.29	-0.12	0.90	0.54
ZARA	13462M001	E	0.77	-0.48	0.15	-0.85	-0.13	0.90	0.69	1.15
ZARA	13462M001	U	1.59	1.47	0.75	0.84	2.62	-1.97	0.35	-0.97

6.2 Datum verification

In this section, the datum verification is shown. A 3 parameter Helmert 3D (3 translations) is computed to the minimally constrained sites.

TRANSFORMATION IN EQUATORIAL SYSTEM (X, Y, Z):
RESIDUALS IN LOCAL SYSTEM (NORTH, EAST, UP)

LIST OF REMOVED STATIONS:

OUTLIER CRITERIA: 15.00 15.00 20.00

NUM	NAME	FLG	RESIDUALS IN MILLIMETERS		
1	ACOR 13434M001	I W	-0.56	0.78	3.24
2	ALAC 13433M001	I W	-2.51	3.85	1.55
3	ALBA 13452M001	I W	3.73	-2.09	-6.55
4	ALME 13437M001	I W	-2.77	-0.02	3.35
5	BCLN 13412M001	I W	0.83	-0.12	0.64
6	BELL 13431M001	I W	-1.16	0.27	2.30
7	BORR 13480M001	I W	-1.22	-0.68	-0.15
8	BRST 10004M004	I W	-2.43	-1.24	3.79
9	CACE 13447M001	I W	-0.51	1.17	5.56
10	CANT 13438M001	I W	-2.83	1.81	-8.08
11	CARG 19412M001	I W	1.37	0.37	-6.32
12	CASE 13494M001	I W	-5.12	3.02	-2.88
13	CEU1 13449M002	I W	0.79	-0.56	-9.45
14	COBA 13453M001	I W	1.51	1.51	-4.89
15	CREU 13432M001	I W	-4.78	2.14	-0.75
17	ESCO 13435M001	I W	-5.46	-0.06	5.27
18	HUEL 13451M001	I W	8.96	-9.68	9.93
20	IZAN 31309M002	I W	4.92	0.55	-4.23
21	LLIV 13436M001	I W	-1.06	1.00	4.75
23	LROC 10023M001	I W	-1.43	1.47	9.35
25	MAS1 31303M002	I W	-0.52	-0.87	-5.80
26	MELI 19379M001	I W	2.53	2.20	-10.16
27	PASA 19351S001	I W	1.06	0.76	-3.53
28	PDEL 31906M004	I W	0.90	-3.19	6.10
29	RABT 35001M002	I W	-0.33	-0.34	-9.47
30	RIO1 13448M002	I W	-1.74	-1.69	3.62
31	SALA 13469M001	I W	1.17	1.86	-0.90
33	SFER 13402M004	I W	-3.10	-9.14	2.63
34	SONS 13446M001	I W	1.74	4.20	0.40
35	VALA 13463M002	I W	0.59	1.76	1.91
36	VALE 13439M001	I W	-4.49	5.51	-6.16
37	VIGO 13450M001	I W	2.76	-1.13	-0.33
40	ZARA 13462M001	I W	-1.60	2.13	3.30
41	ZIMM 14001M004	I W	-2.37	-0.64	6.25
298	CASC 13909S001	A W	3.92	-8.74	5.96
RMS / COMPONENT			3.04	3.34	5.49
IQR			3.80	2.69	8.68
MEAN			-0.26	-0.11	0.01
MEDIAN			-0.52	0.37	0.64
MIN			-5.46	-9.68	-10.16
MAX			8.96	5.51	9.93
OVERALL RMS/IQR/MAX(3D)			4.11	4.24	16.51
					HUEL 13451M001 #SUM
ALL RMS / COMPONENT			3.04	3.34	5.49
ALL IQR			3.80	2.69	8.68
ALL MEAN			-0.26	-0.11	0.01
ALL MEDIAN			-0.52	0.37	0.64
ALL MIN			-5.46	-9.68	-10.16
ALL MAX			8.96	5.51	9.93
ALL OVERALL RMS/IQR/MAX(3D)			4.11	4.24	16.51
					HUEL 13451M001 #SUM_ALL

NUMBER OF PARAMETERS : 3
NUMBER OF STATIONS : 35
NUMBER OF COORDINATES : 105
RMS OF TRANSFORMATION : 4.11 MM

PARAMETERS:

TRANSLATION IN X : -0.00 +- 0.69 MM
TRANSLATION IN Y : 0.00 +- 0.69 MM
TRANSLATION IN Z : 0.00 +- 0.69 MM

NUMBER OF ITERATIONS : 1

6.3 Adjustment Statistics

In this section, the summary of the global adjustment and not subnetworks are shown. Also, the Helmert parameters of the combined solution with respect to the daily solutions are shown.

```
* STATISTICAL PARAMETER----- VALUE(S)-----
NUMBER OF OBSERVATIONS          20694533
NUMBER OF UNKNOWN(S)            204132
NUMBER OF DEGREES OF FREEDOM    20490401
PHASE MEASUREMENTS SIGMA        0.00100
SAMPLING INTERVAL (SECONDS)     180
WEIGHTED SQUARE SUM OF O-C      44.470482480808194
```

7 Equipment

7.1 Receiver List

Serial numbers not shown.

```
*SITE PT SOLN T DATA_START_ DATA_END_ DESCRIPTION----- S/N_ FIRMWARE____
ACOR A 1 P 23:043:00000 23:049:86370 LEICA GR50 -----
ALDA A 1 P 23:043:00000 23:049:86370 LEICA GR30 -----
ALSA A 1 P 23:043:00000 23:049:86370 LEICA GR50 -----
AMUR A 1 P 23:043:00000 23:049:86370 LEICA GR30 -----
BIAZ A 1 P 23:043:00000 23:049:86370 SPECTRA SP90M -----
BIDA A 1 P 23:043:00000 23:049:86370 LEICA GR10 -----
BRZR A 1 P 23:043:00000 23:049:86370 LEICA GR30 -----
CACE A 1 P 23:043:00000 23:049:86370 TRIMBLE NETR9 -----
CANT A 1 P 23:043:00000 23:049:86370 LEICA GR10 -----
CREU A 1 P 23:043:00000 23:049:86370 LEICA GR50 -----
EBRE A 1 P 23:043:00000 23:049:86370 LEICA GR50 -----
ELGE A 1 P 23:043:00000 23:049:86370 LEICA GR30 -----
EMAZ A 1 P 23:043:00000 23:049:86370 LEICA GR30 -----
GERN A 1 P 23:043:00000 23:049:86370 LEICA GR30 -----
HOND A 1 P 23:043:00000 23:049:86370 LEICA GR50 -----
IGEL A 1 P 23:043:00000 23:049:86370 LEICA GR30 -----
ISPS A 1 P 23:043:00000 23:049:86370 TRIMBLE NETR9 -----
KAST A 1 P 23:043:00000 23:049:86370 LEICA GR30 -----
LARE A 1 P 23:043:00000 23:049:86370 LEICA GR50 -----
LAZK A 1 P 23:043:00000 23:049:86370 LEICA GR30 -----
LEIT A 1 P 23:043:00000 23:049:86370 LEICA GR50 -----
ORON A 1 P 23:043:00000 23:049:86370 LEICA GR50 -----
PAS2 A 1 P 23:043:00000 23:049:86370 STONEX SC2200 -----
PASA A 1 P 23:043:00000 23:049:86370 LEICA GR30 -----
RIO1 A 1 P 23:043:00000 23:049:86370 LEICA GR25 -----
SALA A 1 P 23:043:00000 23:049:86370 LEICA GR50 -----
SCOA A 1 P 23:043:00000 23:049:86370 LEICA GR50 -----
SOPU A 1 P 23:043:00000 23:049:86370 LEICA GR30 -----
TERU A 1 P 23:043:00000 23:049:86370 LEICA GR50 -----
VITO A 1 P 23:043:00000 23:049:86370 LEICA GR30 -----
YEBE A 1 P 23:043:00000 23:049:86370 LEICA GR50 -----
ZARA A 1 P 23:043:00000 23:049:86370 TRIMBLE NETR9 -----
```

7.2 Antennas

Serial number ONLY provided in case individual calibrations are used.

```
*SITE PT SOLN T DATA_START_ DATA_END_ DESCRIPTION----- S/N_ DAZI
ACOR A 1 P 23:043:00000 23:049:86370 LEIAT504 LEIS -----
ALDA A 1 P 23:043:00000 23:049:86370 LEIAS10 NONE -----
ALSA A 1 P 23:043:00000 23:049:86370 LEIAR10 NONE -----
AMUR A 1 P 23:043:00000 23:049:86370 LEIAS10 NONE -----
BIAZ A 1 P 23:043:00000 23:049:86370 LEIAR25 LEIT -----
BIDA A 1 P 23:043:00000 23:049:86370 LEIAS10 NONE -----
BRZR A 1 P 23:043:00000 23:049:86370 LEIAS10 NONE -----
CACE A 1 P 23:043:00000 23:049:86370 TRM29659.00 NONE -----
CANT A 1 P 23:043:00000 23:049:86370 LEIAR25_R4 LEIT -----
CREU A 1 P 23:043:00000 23:049:86370 LEIAR25_R4 NONE -----
EBRE A 1 P 23:043:00000 23:049:86370 LEIAR25_R4 NONE -----
ELGE A 1 P 23:043:00000 23:049:86370 LEIAR25_R4 LEIT -----
EMAZ A 1 P 23:043:00000 23:049:86370 LEIAS10 NONE -----
GERN A 1 P 23:043:00000 23:049:86370 LEIAS10 NONE -----
HOND A 1 P 23:043:00000 23:049:86370 LEIAR20 LEIM -----
IGEL A 1 P 23:043:00000 23:049:86370 LEIAR20 LEIM -----
ISPS A 1 P 23:043:00000 23:049:86370 TRM59900.00 SCIS -----
KAST A 1 P 23:043:00000 23:049:86370 LEIAS10 NONE -----
LARE A 1 P 23:043:00000 23:049:86370 LEIAR20 LEIM -----
LAZK A 1 P 23:043:00000 23:049:86370 LEIAR25_R4 LEIT -----
LEIT A 1 P 23:043:00000 23:049:86370 LEIAR10 NONE -----
ORON A 1 P 23:043:00000 23:049:86370 LEIAR10 NONE -----
PAS2 A 1 P 23:043:00000 23:049:86370 LEIAR20 LEIM -----
PASA A 1 P 23:043:00000 23:049:86370 LEIAR20 LEIM -----
RIO1 A 1 P 23:043:00000 23:049:86370 LEIAR25_R4 LEIT -----
SALA A 1 P 23:043:00000 23:049:86370 LEIAR25 NONE -----
SCOA A 1 P 23:043:00000 23:049:86370 TRM55971.00 NONE -----
SOPU A 1 P 23:043:00000 23:049:86370 LEIAS10 NONE -----
TERU A 1 P 23:043:00000 23:049:86370 LEIAR20 LEIM -----
VITO A 1 P 23:043:00000 23:049:86370 LEIAS10 NONE -----
YEBE A 1 P 23:043:00000 23:049:86370 LEIAR20 LEIM -----
ZARA A 1 P 23:043:00000 23:049:86370 TRM29659.00 NONE -----
```

7.3 Eccentricities

```

*
*SITE PT SOLN T DATA_START__ DATA_END_____ AXE ARP-->BENCHMARK(M)-----
UP_____NORTH_____EAST_____
ACDR A 1 P 23:043:00000 23:049:86370 UNE 3.0460 0.0000 0.0000
ALDA A 1 P 23:043:00000 23:049:86370 UNE 0.0000 0.0000 0.0000
ALSA A 1 P 23:043:00000 23:049:86370 UNE 0.0000 0.0000 0.0000
AMUR A 1 P 23:043:00000 23:049:86370 UNE 0.0000 0.0000 0.0000
BIAZ A 1 P 23:043:00000 23:049:86370 UNE 0.0000 0.0000 0.0000
BIDA A 1 P 23:043:00000 23:049:86370 UNE 0.0000 0.0000 0.0000
BRZR A 1 P 23:043:00000 23:049:86370 UNE 0.0771 0.0000 0.0000
CACE A 1 P 23:043:00000 23:049:86370 UNE 0.0600 0.0000 0.0000
CANT A 1 P 23:043:00000 23:049:86370 UNE 3.0490 0.0000 0.0000
CREU A 1 P 23:043:00000 23:049:86370 UNE 0.0770 0.0000 0.0000
EBRE A 1 P 23:043:00000 23:049:86370 UNE 0.0770 0.0000 0.0000
ELGE A 1 P 23:043:00000 23:049:86370 UNE 0.0000 0.0000 0.0000
EMAZ A 1 P 23:043:00000 23:049:86370 UNE 0.0350 0.0000 0.0000
GERN A 1 P 23:043:00000 23:049:86370 UNE 0.0771 0.0000 0.0000
HOND A 1 P 23:043:00000 23:049:86370 UNE 0.0771 0.0000 0.0000
IGEL A 1 P 23:043:00000 23:049:86370 UNE 0.0000 0.0000 0.0000
ISPS A 1 P 23:043:00000 23:049:86370 UNE 0.0350 0.0000 0.0000
KAST A 1 P 23:043:00000 23:049:86370 UNE 0.0350 0.0000 0.0000
LARE A 1 P 23:043:00000 23:049:86370 UNE 0.0000 0.0000 0.0000
LAZK A 1 P 23:043:00000 23:049:86370 UNE 0.0000 0.0000 0.0000
LEIT A 1 P 23:043:00000 23:049:86370 UNE 0.0000 0.0000 0.0000
ORDN A 1 P 23:043:00000 23:049:86370 UNE 0.0000 0.0000 0.0000
PAS2 A 1 P 23:043:00000 23:049:86370 UNE 0.0000 0.0000 0.0000
PASA A 1 P 23:043:00000 23:049:86370 UNE 0.0000 0.0000 0.0000
R101 A 1 P 23:043:00000 23:049:86370 UNE 0.0606 0.0000 0.0000
SALA A 1 P 23:043:00000 23:049:86370 UNE 0.0600 0.0000 0.0000
SCDA A 1 P 23:043:00000 23:049:86370 UNE 0.0000 0.0000 0.0000
SOPU A 1 P 23:043:00000 23:049:86370 UNE 0.0771 0.0000 0.0000
TERU A 1 P 23:043:00000 23:049:86370 UNE 0.0600 0.0000 0.0000
VITO A 1 P 23:043:00000 23:049:86370 UNE 0.0000 0.0000 0.0000
YEBE A 1 P 23:043:00000 23:049:86370 UNE 0.0600 0.0000 0.0000
ZARA A 1 P 23:043:00000 23:049:86370 UNE 3.2590 0.0000 0.0000
    
```

8 Inconsistencies (logsheet-RINEX metadata)

The following inconsistencies were found comparing the data available in the logsheets and the RINEX headers:

```

2023-03-02 23:17 UTC | ALDA0430_230 | RECEIVER FIRM. VERS. | 4.60/7.811 -> 4.60.259 (source: alda00esp_20221108.log
2023-03-02 23:17 UTC | ALSA0430_230 | RECEIVER FIRM. VERS. | 4.31/7.403 -> 4.31 (source: alsa00esp_20181108.log
2023-03-02 23:17 UTC | AMUR0430_230 | ANTENNA SER. NO. | 16471028 -> 12041036 (source: amur00esp_20221114.log
2023-03-02 23:17 UTC | AMUR0430_230 | RECEIVER FIRM. VERS. | 4.60/7.811 -> 4.60.259 (source: amur00esp_20221114.log
2023-03-02 23:17 UTC | ISPS0430_230 | RECEIVER FIRM. VERS. | 5.30 -> 5.22 (source: isps00esp_20220907.log
2023-03-02 23:17 UTC | LARE0430_230 | RECEIVER FIRM. VERS. | 4.52/7.711 -> 4.31/7.403 (source: lare00esp_20200723.log
2023-03-02 23:17 UTC | LEIT0430_230 | RECEIVER FIRM. VERS. | 4.31/7.403 -> 4.31 (source: leit00esp_20181204.log
2023-03-02 23:17 UTC | ORON0430_230 | RECEIVER FIRM. VERS. | 4.31/7.403 -> 4.31 (source: oron00esp_20181101.log
2023-03-02 23:17 UTC | VITO0430_230 | RECEIVER FIRM. VERS. | 4.60/7.811 -> 4.60.259 (source: vito00esp_20221108.log
2023-03-02 23:17 UTC | VITO0430_230 | RECEIVER FIRM. VERS. | 4.60/7.811 -> 4.60.259 (source: vito00esp_20221108.log
2023-03-03 02:32 UTC | ALDA0440_230 | RECEIVER FIRM. VERS. | 4.60/7.811 -> 4.60.259 (source: alda00esp_20221108.log
2023-03-03 02:32 UTC | ALSA0440_230 | RECEIVER FIRM. VERS. | 4.31/7.403 -> 4.31 (source: alsa00esp_20181108.log
2023-03-03 02:32 UTC | AMUR0440_230 | ANTENNA SER. NO. | 16471028 -> 12041036 (source: amur00esp_20221114.log
2023-03-03 02:32 UTC | AMUR0440_230 | RECEIVER FIRM. VERS. | 4.60/7.811 -> 4.60.259 (source: amur00esp_20221114.log
2023-03-03 02:32 UTC | ISPS0440_230 | RECEIVER FIRM. VERS. | 5.30 -> 5.22 (source: isps00esp_20220907.log
2023-03-03 02:32 UTC | LARE0440_230 | RECEIVER FIRM. VERS. | 4.52/7.711 -> 4.31/7.403 (source: lare00esp_20200723.log
2023-03-03 02:32 UTC | LEIT0440_230 | RECEIVER FIRM. VERS. | 4.31/7.403 -> 4.31 (source: leit00esp_20181204.log
2023-03-03 02:32 UTC | ORON0440_230 | RECEIVER FIRM. VERS. | 4.31/7.403 -> 4.31 (source: oron00esp_20181101.log
2023-03-03 02:32 UTC | VITO0440_230 | RECEIVER FIRM. VERS. | 4.60/7.811 -> 4.60.259 (source: vito00esp_20221108.log
2023-03-03 05:45 UTC | ALDA0450_230 | RECEIVER FIRM. VERS. | 4.60/7.811 -> 4.60.259 (source: alda00esp_20221108.log
2023-03-03 05:45 UTC | ALSA0450_230 | RECEIVER FIRM. VERS. | 4.31/7.403 -> 4.31 (source: alsa00esp_20181108.log
2023-03-03 05:45 UTC | AMUR0450_230 | ANTENNA SER. NO. | 16471028 -> 12041036 (source: amur00esp_20221114.log
2023-03-03 05:45 UTC | AMUR0450_230 | RECEIVER FIRM. VERS. | 4.60/7.811 -> 4.60.259 (source: amur00esp_20221114.log
2023-03-03 05:45 UTC | ISPS0450_230 | RECEIVER FIRM. VERS. | 5.30 -> 5.22 (source: isps00esp_20220907.log
2023-03-03 05:45 UTC | LARE0450_230 | RECEIVER FIRM. VERS. | 4.52/7.711 -> 4.31/7.403 (source: lare00esp_20200723.log
2023-03-03 05:45 UTC | LEIT0450_230 | RECEIVER FIRM. VERS. | 4.31/7.403 -> 4.31 (source: leit00esp_20181204.log
2023-03-03 05:45 UTC | ORON0450_230 | RECEIVER FIRM. VERS. | 4.31/7.403 -> 4.31 (source: oron00esp_20181101.log
2023-03-03 05:45 UTC | VITO0450_230 | RECEIVER FIRM. VERS. | 4.60/7.811 -> 4.60.259 (source: vito00esp_20221108.log
2023-03-03 08:55 UTC | ALDA0460_230 | RECEIVER FIRM. VERS. | 4.60/7.811 -> 4.60.259 (source: alda00esp_20221108.log
2023-03-03 08:55 UTC | ALSA0460_230 | RECEIVER FIRM. VERS. | 4.31/7.403 -> 4.31 (source: alsa00esp_20181108.log
2023-03-03 08:55 UTC | AMUR0460_230 | ANTENNA SER. NO. | 16471028 -> 12041036 (source: amur00esp_20221114.log
2023-03-03 08:55 UTC | AMUR0460_230 | RECEIVER FIRM. VERS. | 4.60/7.811 -> 4.60.259 (source: amur00esp_20221114.log
2023-03-03 08:55 UTC | ISPS0460_230 | RECEIVER FIRM. VERS. | 5.30 -> 5.22 (source: isps00esp_20220907.log
2023-03-03 08:55 UTC | LARE0460_230 | RECEIVER FIRM. VERS. | 4.52/7.711 -> 4.31/7.403 (source: lare00esp_20200723.log
2023-03-03 08:55 UTC | LEIT0460_230 | RECEIVER FIRM. VERS. | 4.31/7.403 -> 4.31 (source: leit00esp_20181204.log
2023-03-03 08:55 UTC | ORON0460_230 | RECEIVER FIRM. VERS. | 4.31/7.403 -> 4.31 (source: oron00esp_20181101.log
2023-03-03 08:55 UTC | VITO0460_230 | RECEIVER FIRM. VERS. | 4.60/7.811 -> 4.60.259 (source: vito00esp_20221108.log
2023-03-03 12:14 UTC | ALDA0470_230 | RECEIVER FIRM. VERS. | 4.60/7.811 -> 4.60.259 (source: alda00esp_20221108.log
2023-03-03 12:14 UTC | ALSA0470_230 | RECEIVER FIRM. VERS. | 4.31/7.403 -> 4.31 (source: alsa00esp_20181108.log
2023-03-03 12:14 UTC | AMUR0470_230 | ANTENNA SER. NO. | 16471028 -> 12041036 (source: amur00esp_20221114.log
2023-03-03 12:14 UTC | AMUR0470_230 | RECEIVER FIRM. VERS. | 4.60/7.811 -> 4.60.259 (source: amur00esp_20221114.log
2023-03-03 12:14 UTC | ISPS0470_230 | RECEIVER FIRM. VERS. | 5.30 -> 5.22 (source: isps00esp_20220907.log
2023-03-03 12:14 UTC | LARE0470_230 | RECEIVER FIRM. VERS. | 4.52/7.711 -> 4.31/7.403 (source: lare00esp_20200723.log
2023-03-03 12:14 UTC | LEIT0470_230 | RECEIVER FIRM. VERS. | 4.31/7.403 -> 4.31 (source: leit00esp_20181204.log
2023-03-03 12:14 UTC | ORON0470_230 | RECEIVER FIRM. VERS. | 4.31/7.403 -> 4.31 (source: oron00esp_20181101.log
2023-03-03 12:14 UTC | VITO0470_230 | RECEIVER FIRM. VERS. | 4.60/7.811 -> 4.60.259 (source: vito00esp_20221108.log
2023-03-03 15:29 UTC | ALDA0480_230 | RECEIVER FIRM. VERS. | 4.60/7.811 -> 4.60.259 (source: alda00esp_20221108.log
2023-03-03 15:29 UTC | ALSA0480_230 | RECEIVER FIRM. VERS. | 4.31/7.403 -> 4.31 (source: alsa00esp_20181108.log
2023-03-03 15:29 UTC | AMUR0480_230 | ANTENNA SER. NO. | 16471028 -> 12041036 (source: amur00esp_20221114.log
2023-03-03 15:29 UTC | AMUR0480_230 | RECEIVER FIRM. VERS. | 4.60/7.811 -> 4.60.259 (source: amur00esp_20221114.log
2023-03-03 15:29 UTC | ISPS0480_230 | RECEIVER FIRM. VERS. | 5.30 -> 5.22 (source: isps00esp_20220907.log
2023-03-03 15:29 UTC | LARE0480_230 | RECEIVER FIRM. VERS. | 4.52/7.711 -> 4.31/7.403 (source: lare00esp_20200723.log
2023-03-03 15:29 UTC | LEIT0480_230 | RECEIVER FIRM. VERS. | 4.31/7.403 -> 4.31 (source: leit00esp_20181204.log
2023-03-03 15:29 UTC | ORON0480_230 | RECEIVER FIRM. VERS. | 4.31/7.403 -> 4.31 (source: oron00esp_20181101.log
2023-03-03 15:29 UTC | VITO0480_230 | RECEIVER FIRM. VERS. | 4.60/7.811 -> 4.60.259 (source: vito00esp_20221108.log
2023-03-03 18:35 UTC | ALDA0490_230 | RECEIVER FIRM. VERS. | 4.60/7.811 -> 4.60.259 (source: alda00esp_20221108.log
2023-03-03 18:35 UTC | ALSA0490_230 | RECEIVER FIRM. VERS. | 4.31/7.403 -> 4.31 (source: alsa00esp_20181108.log
2023-03-03 18:35 UTC | AMUR0490_230 | ANTENNA SER. NO. | 16471028 -> 12041036 (source: amur00esp_20221114.log
2023-03-03 18:35 UTC | AMUR0490_230 | RECEIVER FIRM. VERS. | 4.60/7.811 -> 4.60.259 (source: amur00esp_20221114.log
2023-03-03 18:35 UTC | ISPS0490_230 | RECEIVER FIRM. VERS. | 5.30 -> 5.22 (source: isps00esp_20220907.log
2023-03-03 18:35 UTC | LARE0490_230 | RECEIVER FIRM. VERS. | 4.52/7.711 -> 4.31/7.403 (source: lare00esp_20200723.log
2023-03-03 18:35 UTC | LEIT0490_230 | RECEIVER FIRM. VERS. | 4.31/7.403 -> 4.31 (source: leit00esp_20181204.log
    
```

2023-03-03 18:35 UTC | ORON0490.230 | RECEIVER FIRM. VERS. | 4.31/7.403 -> 4.31 (source: oron00esp_20181101.log)
2023-03-03 18:36 UTC | VITO0490.230 | RECEIVER FIRM. VERS. | 4.60/7.811 -> 4.60.259 (source: vito00esp_20221108.log)

9 References

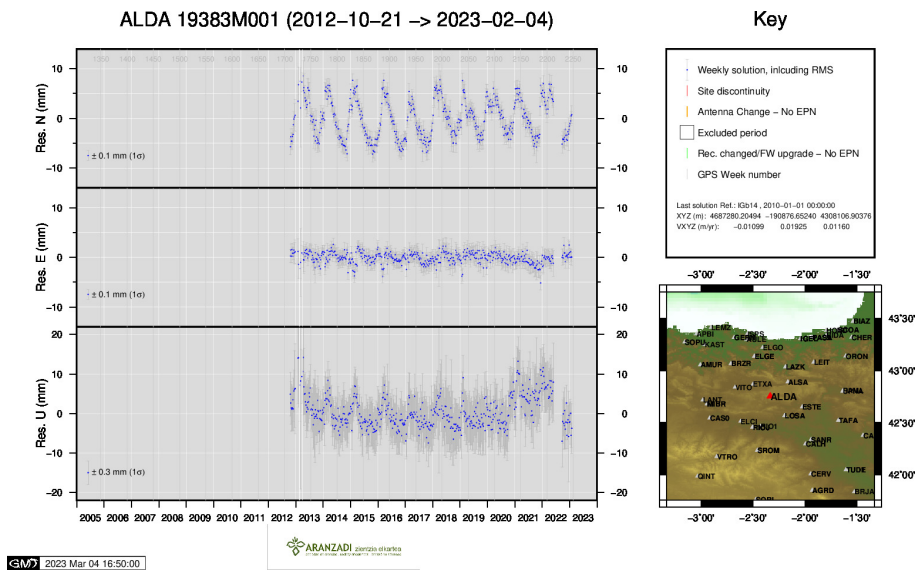
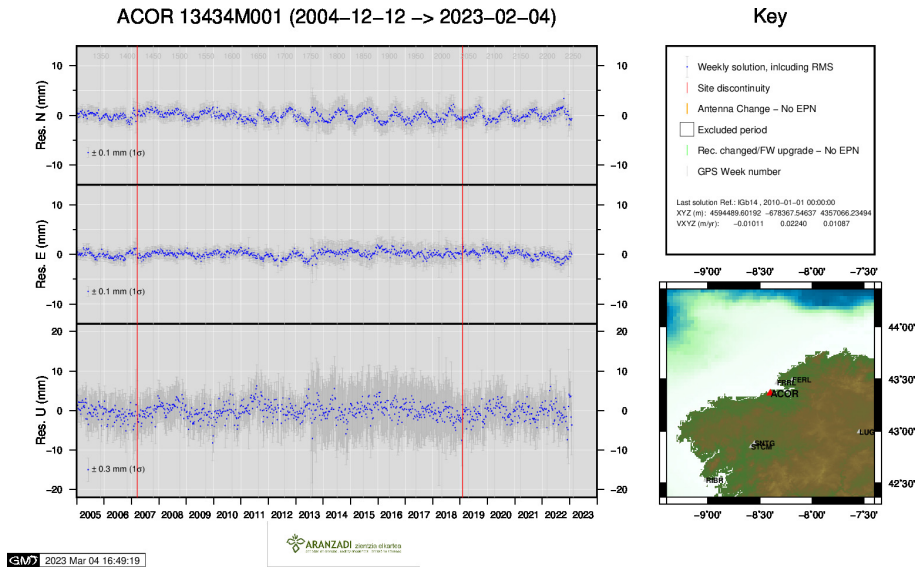
C. Boucher and Z. Altamimi (2011): *Specifications for reference frame fixing in the analysis of a EUREF GPS campaign*. etrs89.ensg.ign.fr/memo-V8.pdf

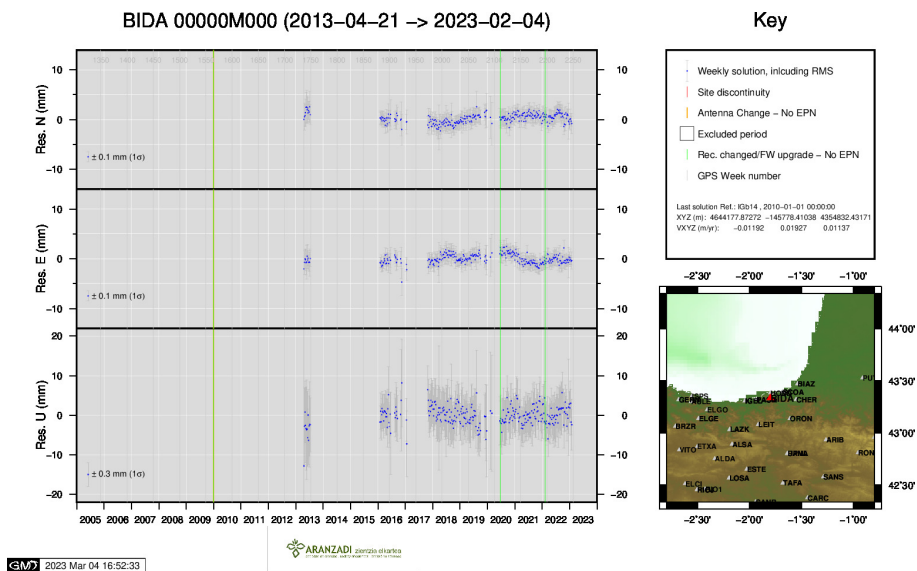
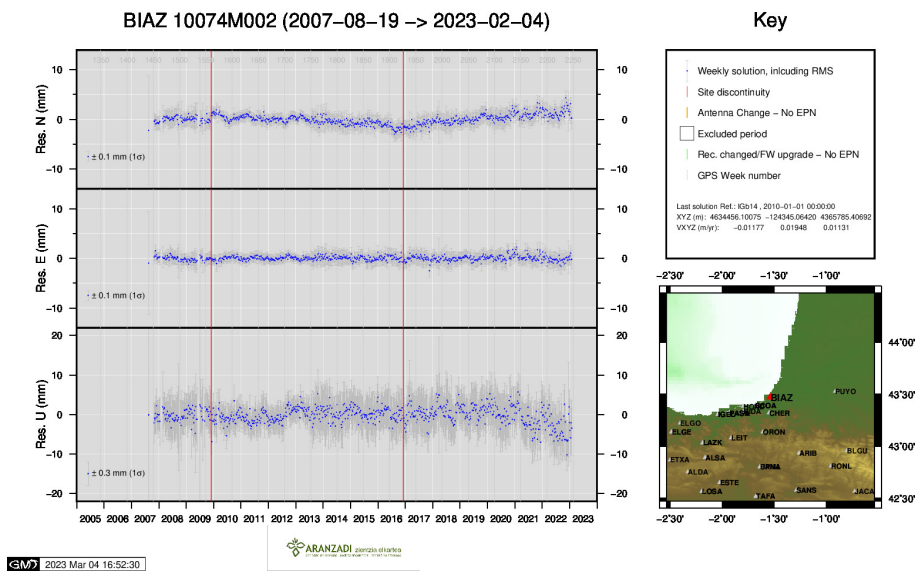
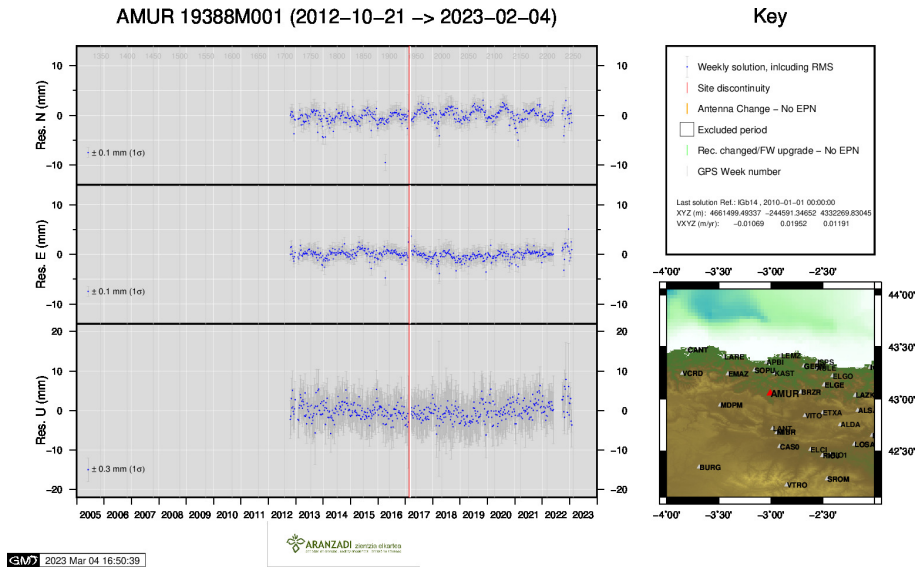
EPN Coordination Group and the EPN Central Bureau (2018): *Guidelines for the EPN Analysis Centres*. epncb.oma.be/documentation/guidelines/guidelines_analysis_centres.pdf

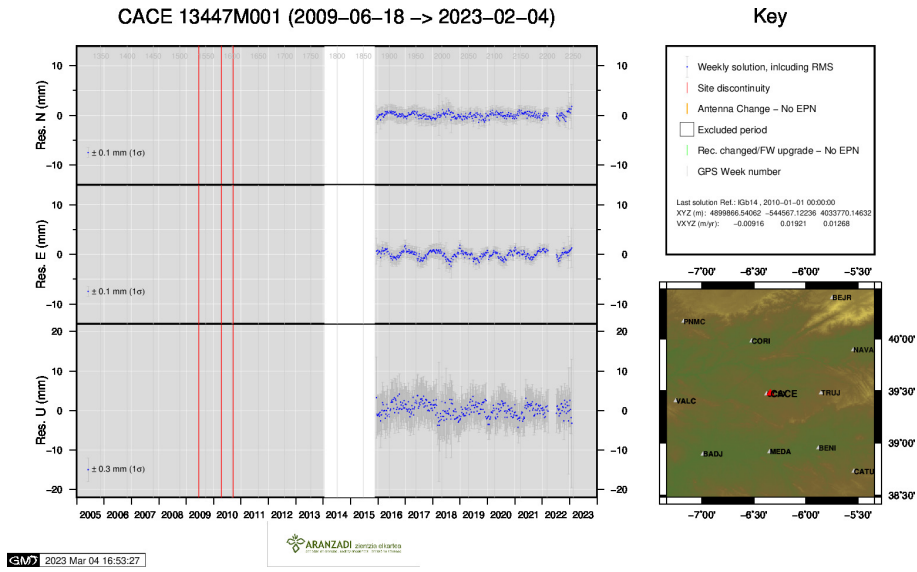
Z. Altamimi (2018): *EUREF Technical Note 1: Relationship and Transformation between the International and the European Terrestrial Reference Systems*. etrs89.ensg.ign.fr/pub/EUREF-TN-1.pdf

10 Cumulative Time Series

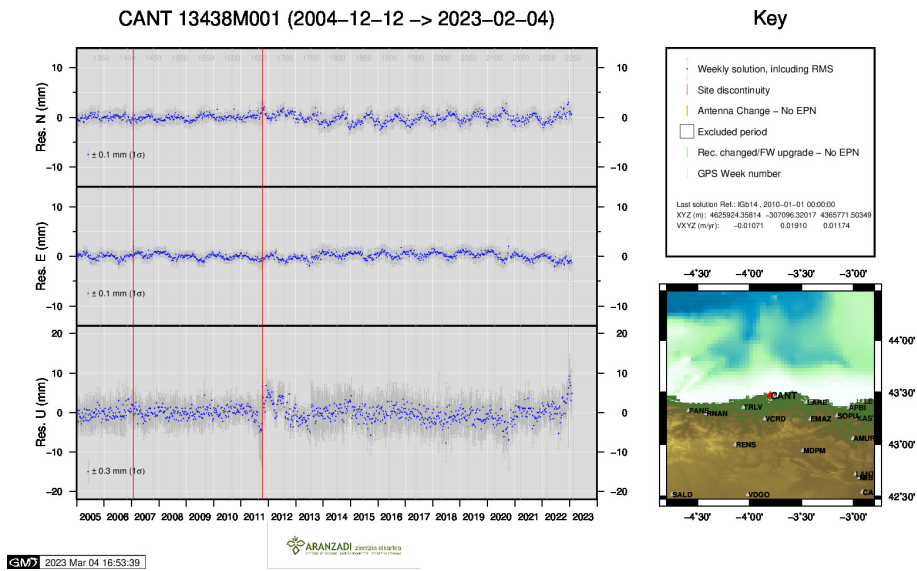
Time series of stations. Latest plots at: <http://geolabpasaia.org/gnss/ARA-net/TSeries/>, or click on the caption of each image.



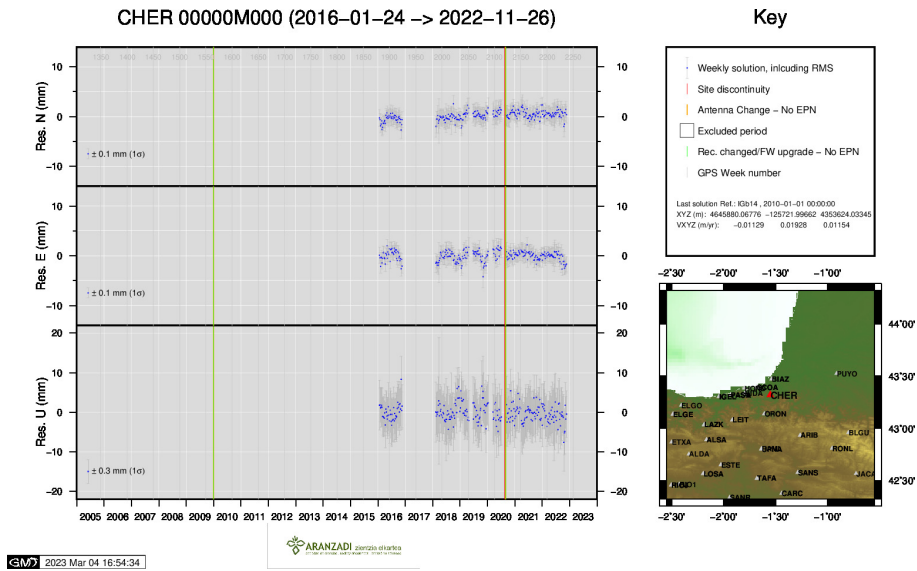




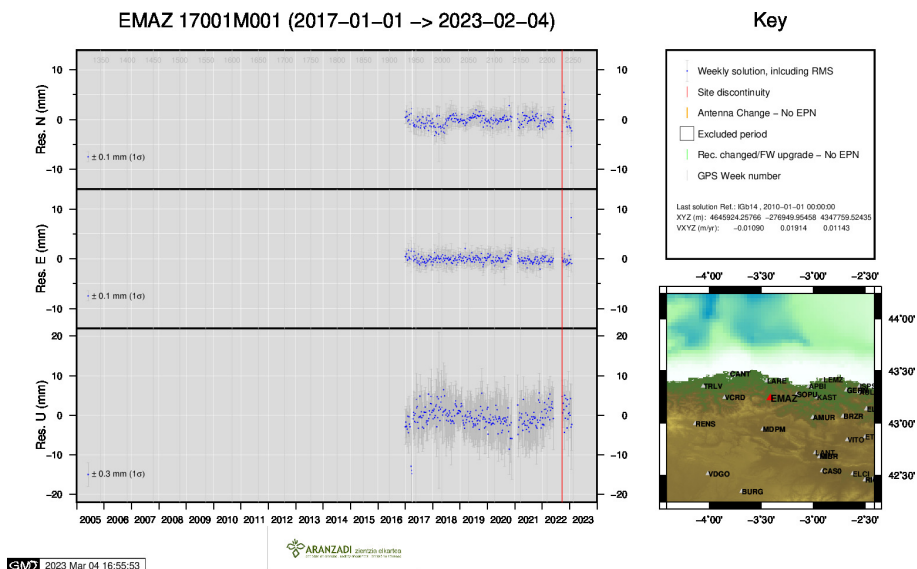
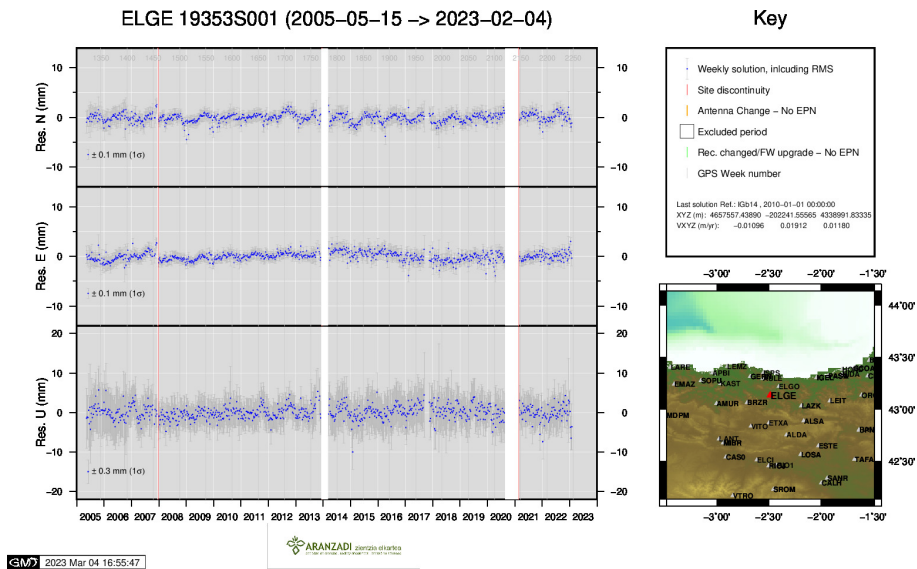
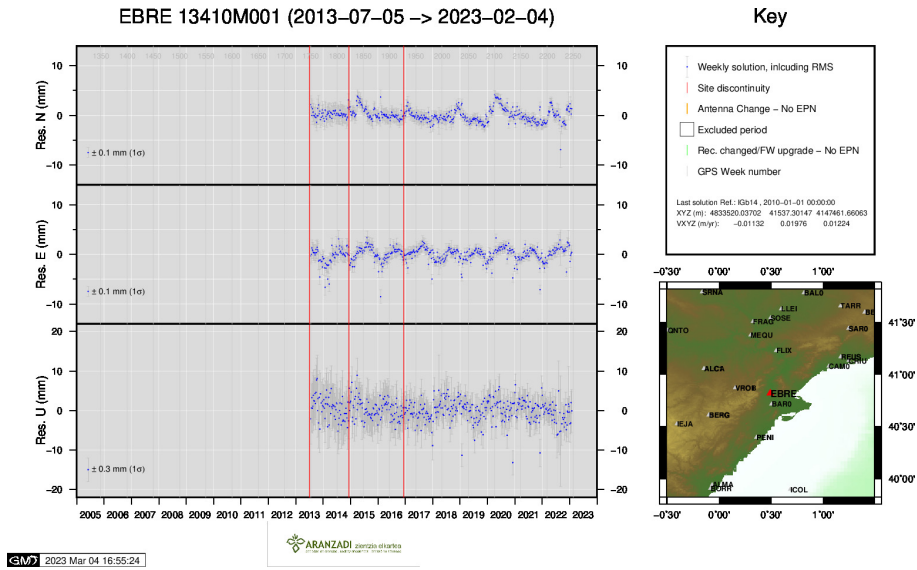
6) CACE

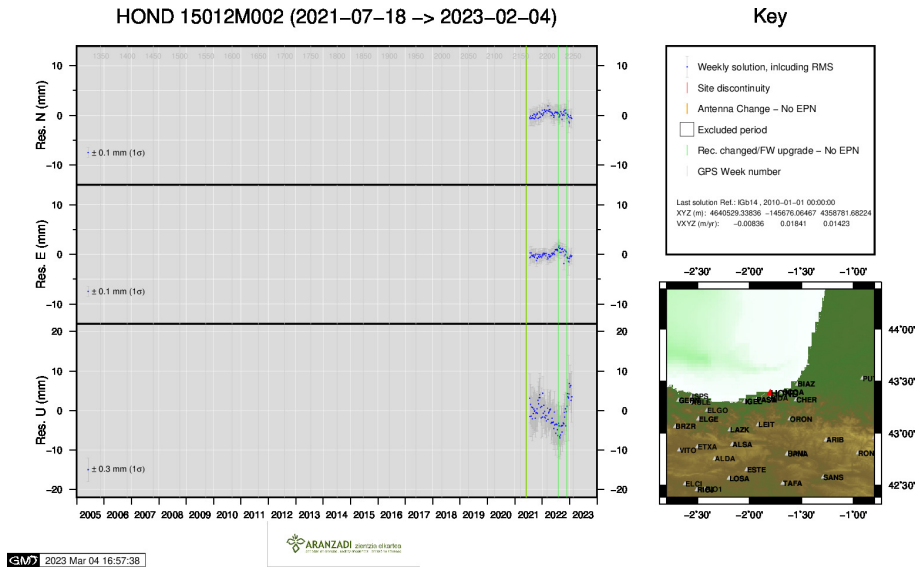


7) CANT

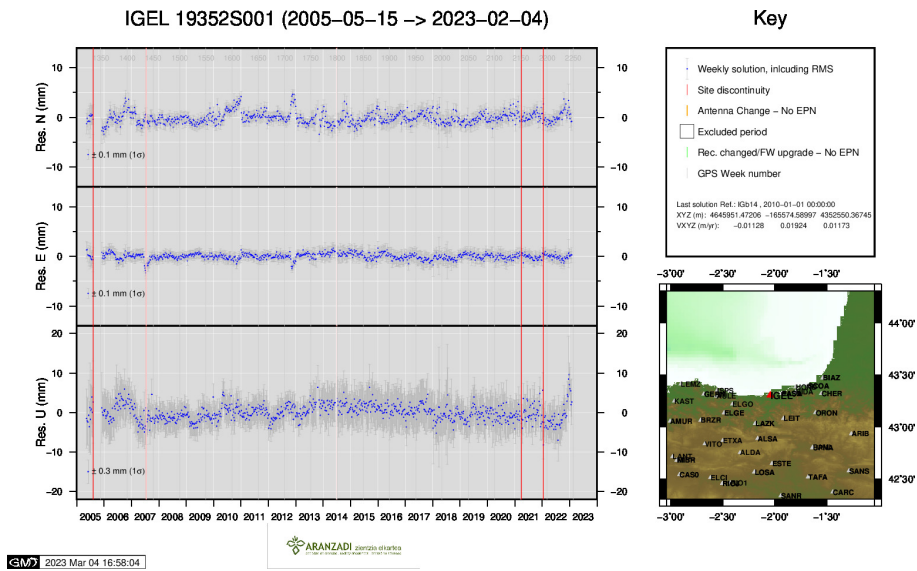


8) CHER

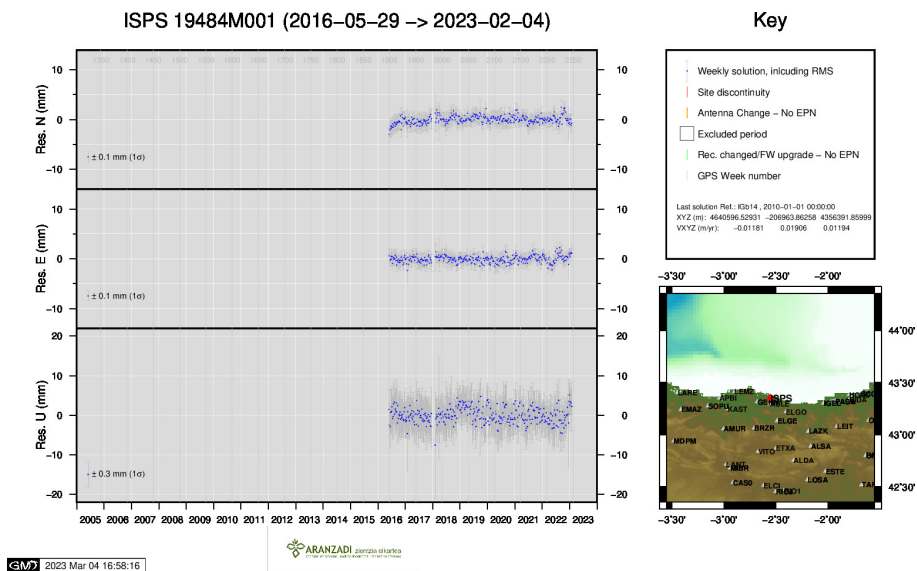




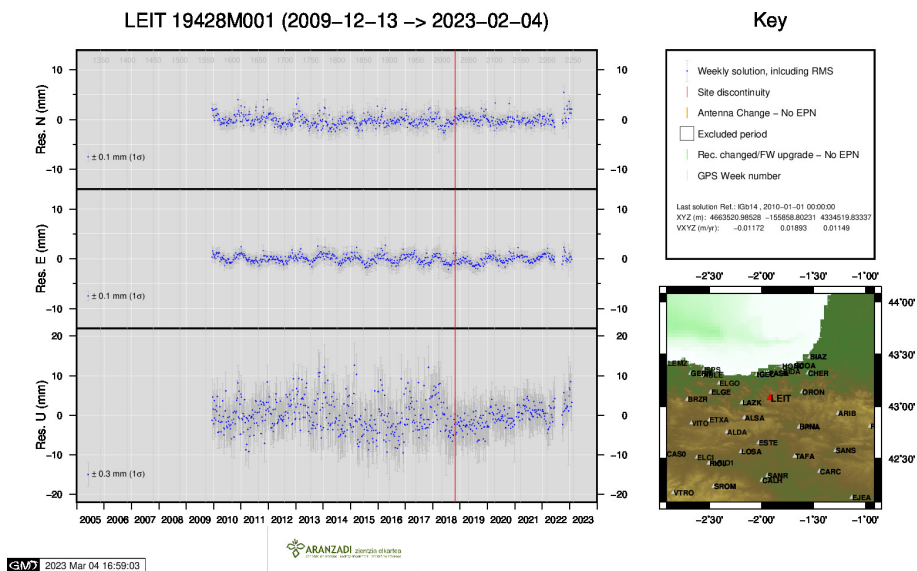
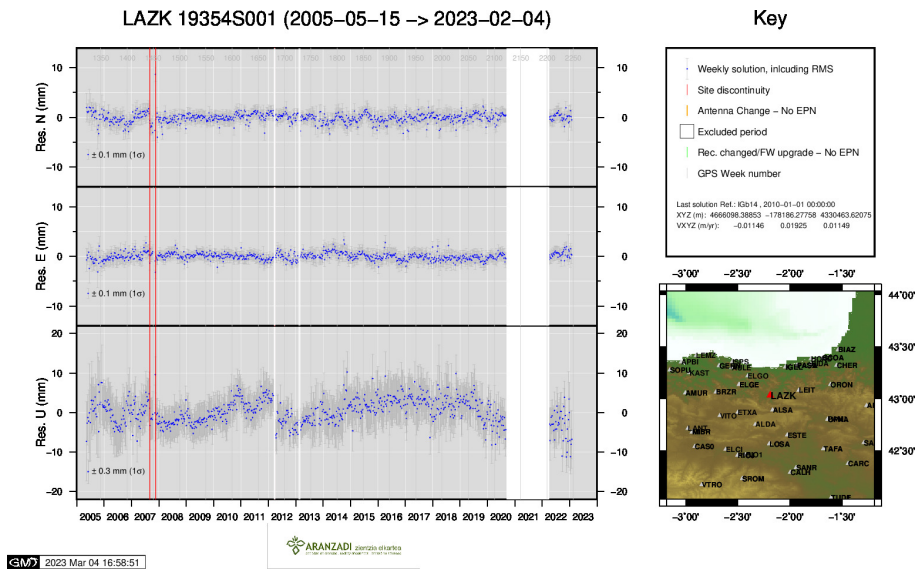
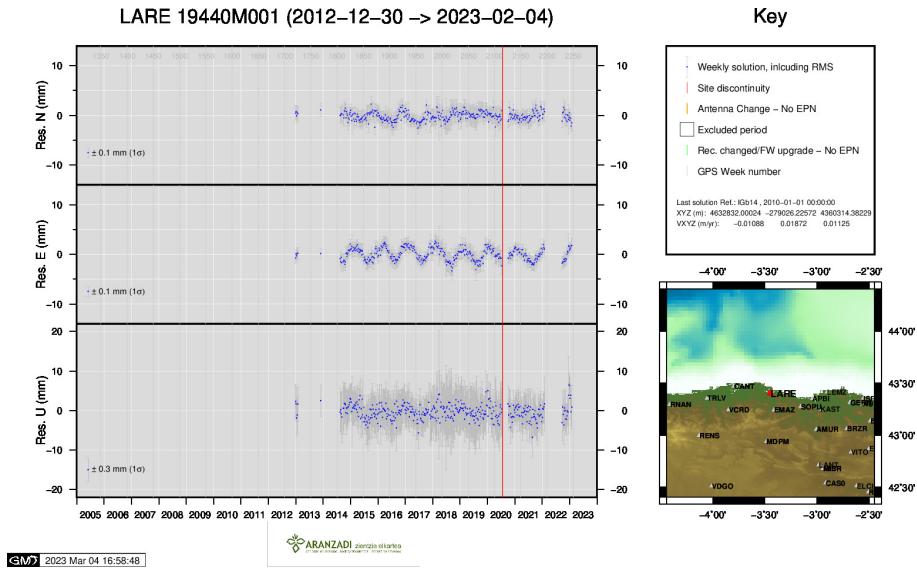
12) HOND

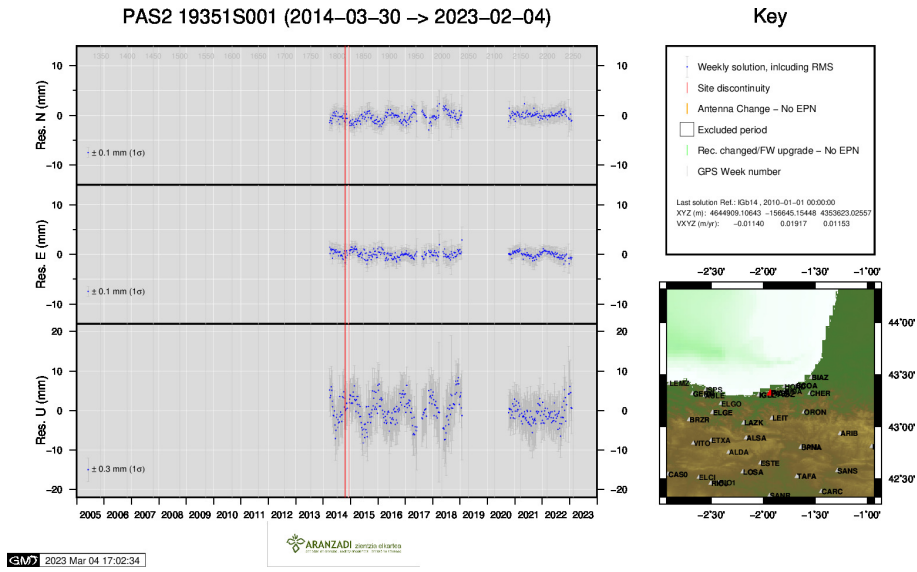


13) IGEL

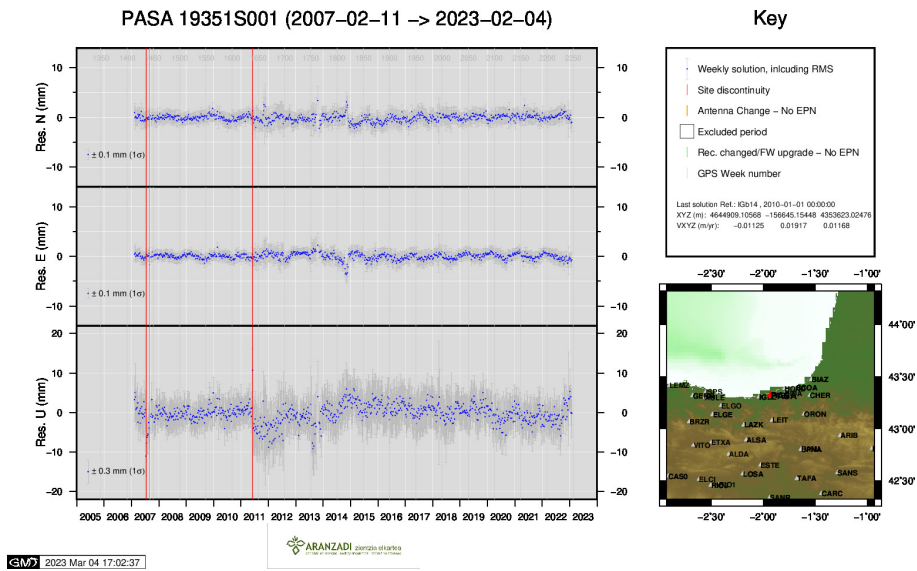


14) ISPS

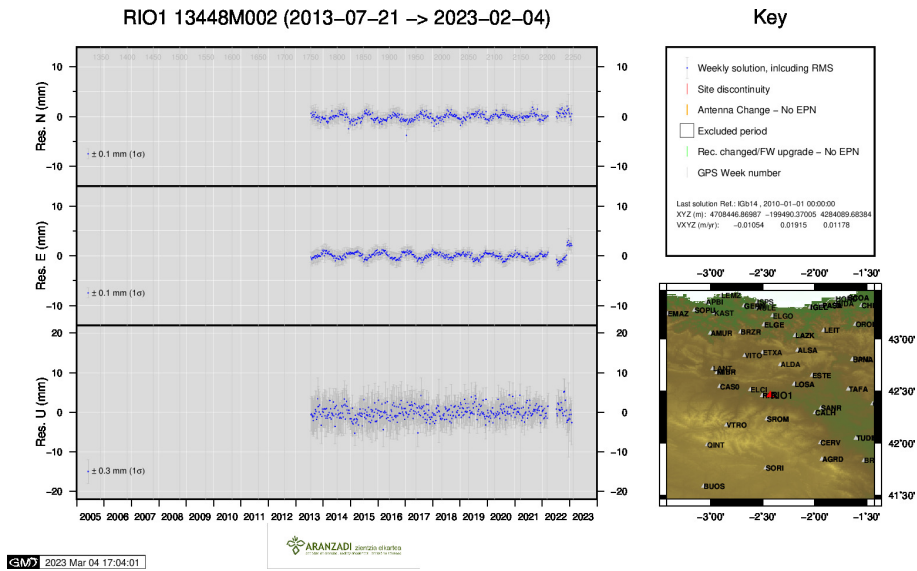




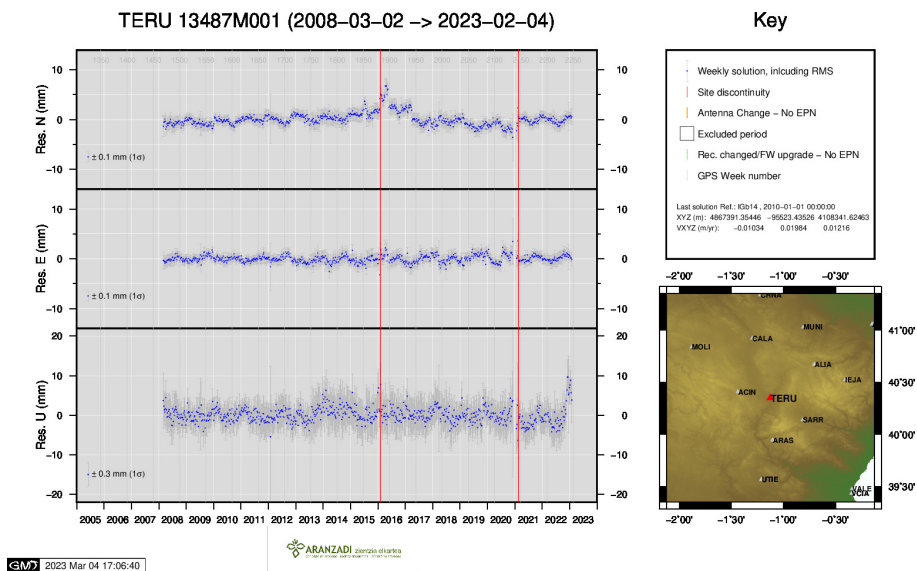
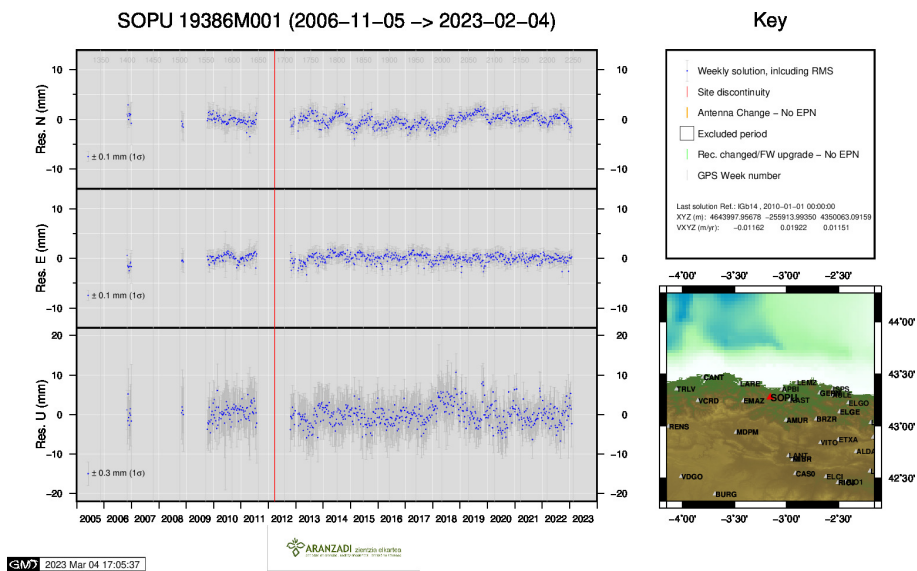
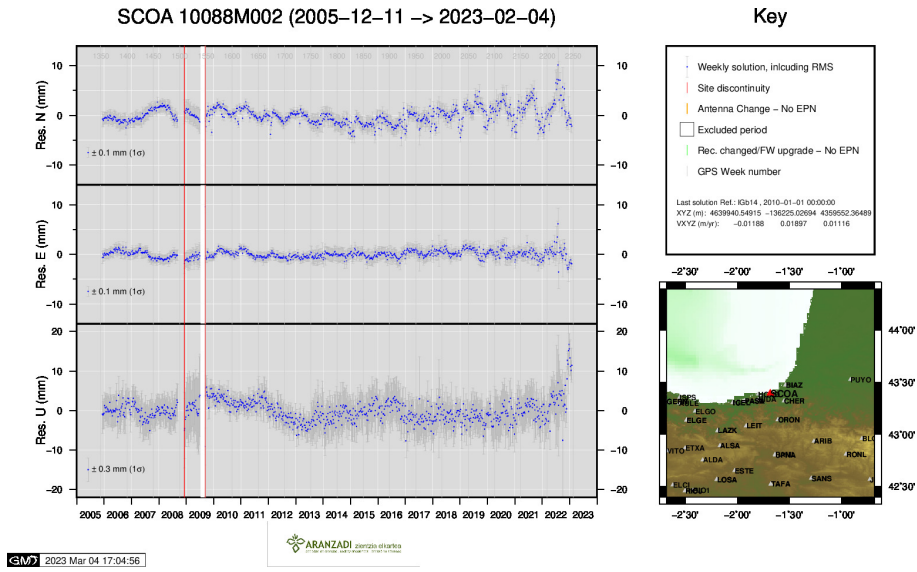
18) PAS2

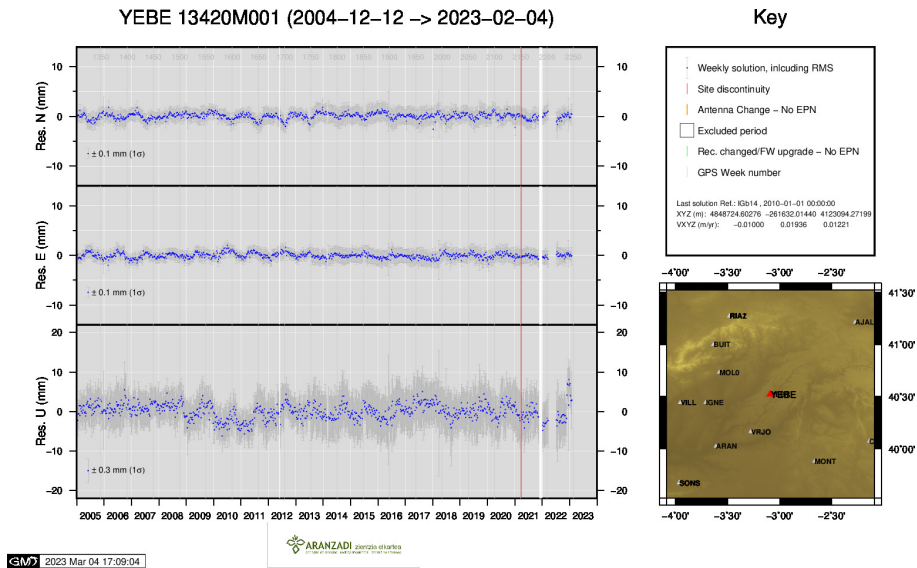


19) PASA

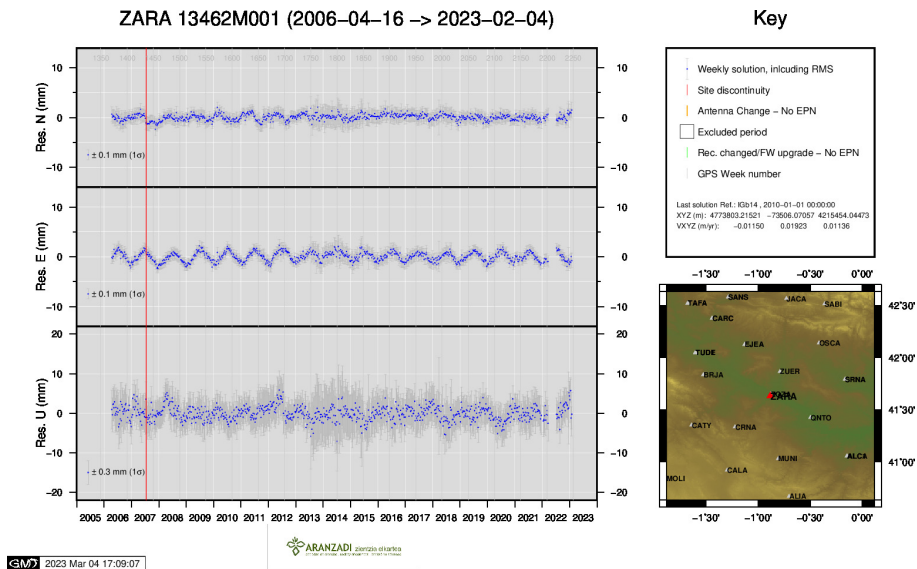


20) RIO1





24) YEBE



25) ZARA