

ARA-DAC Weekly Analysis Result: 2089 (GFA)

Technical Report

GPS Week: 2089 (GFA)

<http://geolabpasaia.org/gnss/ARA-euref/>

ARA-DAC details:

Contact person: J. Zurutuza

Contact mail: geodesia@aranzadi.eus

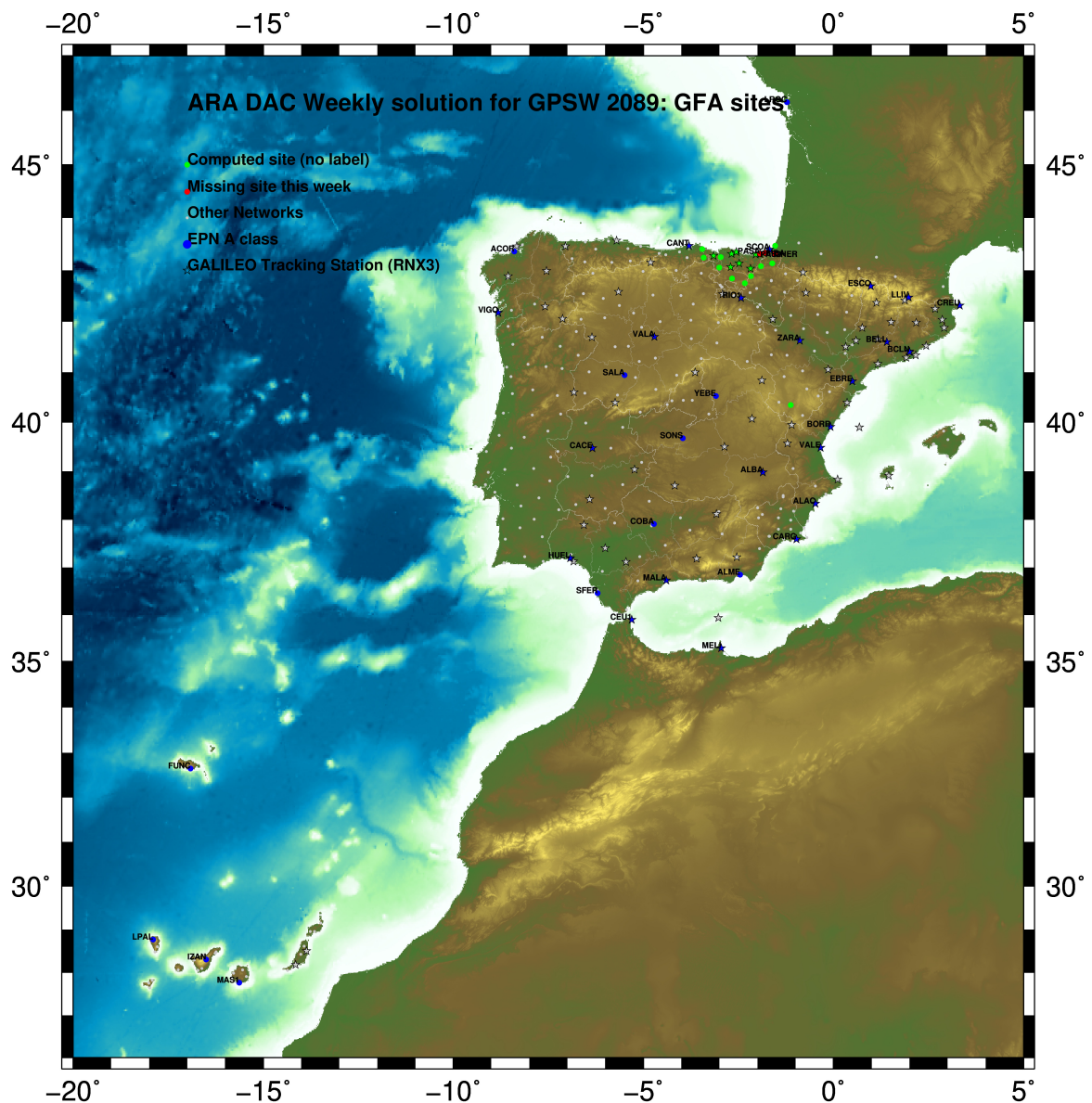
Report generated on 2020/02/09 at 20:35:11



1 Introduction

In may 2015 ARA (EUREF's acronym of the ARANZADI's Department of Applied Geodesy), kicks off as a EUREF's Operational Center. In July 2015, the Densification solutions ARA computes routinely in a weekly basis start being submitted to the EUREF's EPN Densification Project.

2 Map of Computed Sites



GM 2020 Feb 09 20:35:03

Fig.1: Computed Sites for GPS Week2089 (GFA)

3 Main Computation Parameters

The main parameters considered in the ARA analysis follow strictly the EPN recommendations.

- Preprocessing: Independent baselines are defined by the criterion of maximum common observations. Cycle slips are fixed with the MAUPRP program, analysing triple phase differences for each independent baseline. If MAUPRP does not fix all slips for one station, that station is edited out.
- Basic Observable : Carrier phase, L_1 and L_2 ; a priori sigma of single differences: 0.002 m.
 - sampling (for ambiguity resolution): 30 s
 - sampling (for final processing): 180 s
 - Systems: GPS+GLONASS observations are used (Galileo also used if available from GPSW 1986 on)
- Modelled observable: Double differences of carrier phase using different combinations based on the distance.
- Ground antenna phase center calibrations: Group APCV used from the PCV_COD.I14 file and individual calibrations from EPNC_14.ATX. EPN_A class sites (CRD + VEL) IGS14 used to define the reference frame (from GPSW 1934). If individual calibrations, other from these, are available, they are also included in the analysis.
- Troposphere:
 - 3 deg elev. cutoff; elevation dependent weighting
 - VMF1 mapping function. ZPD parameters are estimated using the VMF1 mapping function.
 - CHENHER gradient estimation model.
- Ionosphere: no a priori model, ionospheric effect almost removed by iono free combination.
- Ocean Loading: FES2004 (Scherneck).
- Atmosph. Loading: computed from a global grid using the GRDS1S2 program of Bernese 5.2.

4 Estimated Parameters

- Adjustment: Least Squares
- Rejection Criteria: 3*rms of single differences, in the weekly combination of daily normal equations (ADDNEQ)
- Station coordinates: minimum constraints (MC) to EPN A class sites (only translations).
- Troposphere: 3 deg. After having obtained coordinates valid for the entire week, tropospheric zenith delay is solved at each site at intervals of 1 hour throughout the week, holding the coordinates constrained at the weekly values.
- Ionospheric: second and third "High Order Ionosphere (HOI)" corrections used, using CODE files, to improve Ambiguity Resolution.
- Satellite clock bias: not estimated because are eliminated by double differencing the phase data.
- Receiver clock bias: not estimated because are eliminated by double differencing the phase data.
- Orbits and ERPs: CODE's orbits and ERP for both rapid and final solutions. DE405 planetary ephemeris and JGM3 Earth geopotential model is used.
- Tidal displacements: according to IERS2010 Conventions. Atmospheric loading corrections used.

- Ambiguity: an advanced ambiguity resolution (AR) scheme is included:
 - Code-Based Widelane (WL) AR for baselines shorter than 6000km, a Melbourne-Wuebbena wide-lane and narrow-lane AR is computed.
 - Phase-Based Widelane (L_5) AR for baselines shorter than 200km, the code-based wide-lane AR is replaced by a phase-only wide-lane with a subsequent narrow-lane AR.
 - Quasi-Ionosphere-Free (QIF)AR for the remaining real-valued ambiguities for baselines shorter than 2000km.
 - Direct L_1/L_2 AR for baselines shorter than 20km
- AR Verification: Each baseline is processed by introducing the resolved integer ambiguities and checking the residuals. If there is any problem, the ambiguities are re-initialized.

5 Computed Coordinates

In this section the adjusted coordinates are summarized. Note that the sites with an A flag are the computed ones, whereas sites flagged as W are the ones used in the Minimal Constraints condition.

5.1 IGS14

The Reference Frame considered in this section is IGS14, release C2055.

```

ARA LAC 2089 WEEK FINAL COMBINATION: PRECISE ORBITS                09-FEB-20 16:48
-----
LOCAL GEODETIC DATUM: IGS14                EPOCH: 2020-01-22 12:00:00
-----
NUM STATION NAME          X (M)          Y (M)          Z (M)          FLAG
-----
 1 ACRD 13434M001        4594489.55361      -678367.43158    4357066.29158    W
34 ALDA 19383M001        4687280.14816      -190876.55371    4308106.96482    A
43 ALSA 19419M001        4677250.82441      -176770.38139    4319079.88006    A
45 AMUR 19388M001        4661499.43944      -244591.24715    4332269.89071    A
81 BIAZ 10074M002        4634456.04343      -124344.96533    4365785.46669    A
92 BRZR 19387M001        4662220.98438      -220769.88785    4333309.45101    A
 9 CACE 13447M001        4899866.49418      -544567.02497    4033770.21123    W
10 CANT 13438M001        4625924.30476      -307096.22185    4365771.56243    W
15 CREU 13432M001        4715420.12071      273178.06992    4271946.84933    W
17 EBRE 13410M001        4833519.98207      41537.40054    4147461.72379    W
139 ELGE 19353S001        4657557.39643      -202241.46432    4338991.87999    A
141 EMAZ 17001M001        4645924.19667      -276949.85405    4347759.58477    A
209 GERN 19389M001        4642811.31104      -217222.91089    4353278.88545    A
183 IGEL 19352S001        4645951.42052      -165574.49219    4352550.42675    A
188 ISPS 19484M001        4640596.47303      -206963.76573    4356391.92358    A
193 KAST 19499M001        4646949.07040      -240747.26357    4348015.00092    A
198 LARE 19440M001        4632831.94555      -279026.12564    4360314.43543    A
199 LAZK 19354S001        4666098.33406      -178186.18020    4330463.68157    A
203 LEIT 19428M001        4663520.92482      -155858.70560    4334519.89046    A
260 ORDN 19427M001        4659695.76766      -130864.72425    4338948.88854    A
33 PASA 19351S001        4644909.05052      -156645.05661    4353623.08499    W
36 RI01 13448M002        4708446.81705      -199490.27222    4284089.74321    W
37 SALA 13469M001        4803054.47418      -462131.05868    4158379.08602    W
38 SCDA 10088M002        4639940.48961      -136224.93037    4359552.42075    W
321 S0P1 19386M001        4643997.89939      -255913.89529    4350063.15050    A
342 TERU 13487M001        4867391.31493      -95523.33926    4108341.69059    A
375 VITO 19385M001        4679397.69079      -218436.49410    4314898.37258    A
49 YEBE 13420M001        4848724.55876      -261631.92052    4123094.33825    W
50 ZARA 13462M001        4773803.15906      -73505.97448    4215454.10319    W
    
```

5.2 ETRF2000 (ETRS89) Coordinates

European Terrestrial Reference System, 1989 (ETRS89) is realized by ETRF2000 (Boucher and Altamimi, 2011) and (Altamimi, 2017).

```

ETRF2000 FINAL COORD. wk 2089                09-FEB-20 16:48
-----
LOCAL GEODETIC DATUM: ETRF2000                EPOCH: 2020-01-22 12:00:00
-----
NUM STATION NAME          X (M)          Y (M)          Z (M)          FLAG
-----
 1 ACRD 13434M001        4594489.86567      -678367.98173    4357065.86683    W
34 ALDA 19383M001        4687280.51507      -190877.11262    4308106.53899    A
43 ALSA 19419M001        4677251.19377      -176770.93919    4319079.45518    A
45 AMUR 19388M001        4661499.80163      -244591.80347    4332269.46622    A
81 BIAZ 10074M002        4634456.42234      -124345.51841    4365785.04577    A
92 BRZR 19387M001        4662221.34949      -220770.44419    4333309.02676    A
 9 CACE 13447M001        4899866.79941      -544567.60713    4033769.76444    W
10 CANT 13438M001        4625924.66185      -307096.77456    4365771.13991    W
15 CREU 13432M001        4715420.54039      273177.50971    4271946.42696    W
17 EBRE 13410M001        4833520.36535      41536.82696    4147461.28945    W
139 ELGE 19353S001        4657557.76416      -202242.02011    4338991.45633    A
141 EMAZ 17001M001        4645924.55609      -276950.40882    4347759.16108    A
209 GERN 19389M001        4642811.67798      -217223.46514    4353278.46274    A
183 IGEL 19352S001        4645951.79358      -165575.04663    4352550.00444    A
188 ISPS 19484M001        4640596.84142      -206964.31972    4356391.50117    A
193 KAST 19499M001        4646949.43416      -240747.81833    4348014.57760    A
198 LARE 19440M001        4632832.30561      -279026.67900    4360314.01273    A
199 LAZK 19354S001        4666098.70406      -178186.73682    4330463.25754    A
203 LEIT 19428M001        4663521.29777      -155859.26188    4334519.46691    A
260 ORDN 19427M001        4659696.14390      -130865.28004    4338948.46559    A
33 PASA 19351S001        4644909.42472      -156645.61091    4353622.66287    W
36 RI01 13448M002        4708447.18123      -199490.83339    4284089.31563    W
37 SALA 13469M001        4803054.79809      -462131.63052    4158378.64782    W
38 SCDA 10088M002        4639940.86666      -136225.48407    4359551.99926    W
321 S0P1 19386M001        4643998.26148      -255914.44978    4350062.72722    A
342 TERU 13487M001        4867391.67910      -95523.91688    4108341.25194    A
375 VITO 19385M001        4679398.05488      -218437.05225    4314897.94702    A
49 YEBE 13420M001        4848724.90414      -261632.49668    4123093.89900    W
50 ZARA 13462M001        4773803.53343      -73506.54217    4215453.67209    W
    
```

5.3 ETRF2014 (ETRS89) Coordinates

European Terrestrial Reference System, 1989 (ETRS89) is realized by ETRF2014 (Boucher and Altamimi, 2011) and (Altamimi, 2017).

ETRF2014 FINAL COORD. wk 2089 09-FEB-20 16:48

 LOCAL GEODETIC DATUM: ETRF2014 EPOCH: 2020-01-22 12:00:00

NUM	STATION NAME	X (M)	Y (M)	Z (M)	FLAG
1	ACDR 13434M001	4594489.82334	-678368.02007	4357065.91553	W
34	ALDA 19383M001	4687280.47050	-190877.15233	4308106.58759	A
43	ALSA 19419M001	4677251.14926	-176770.97899	4319079.50381	A
45	AMUR 19388M001	4661499.75748	-244591.84309	4332269.51485	A
81	BLAZ 10074M002	4634456.37809	-124345.55856	4365785.09453	A
92	BRZR 19387M001	4662221.30527	-220770.48389	4333309.07540	A
9	CACE 13447M001	4899866.75357	-544567.64473	4033769.81247	W
10	CANT 13438M001	4625924.61823	-307096.81409	4365771.18862	W
15	CREU 13432M001	4715420.49396	273177.46850	4271946.47579	W
17	EBRE 13410M001	4833520.31851	41536.78702	4147461.33784	W
139	ELGE 19353S001	4657557.71992	-202242.05989	4338991.50499	A
141	EMAZ 17001M001	4645924.51220	-276950.44838	4347759.20974	A
209	GERN 19389M001	4642811.63394	-217223.50493	4353278.51144	A
183	IGEL 19352S001	4645951.74935	-165575.08659	4352550.05315	A
188	ISPS 19484M001	4640596.79736	-206964.35955	4356391.54988	A
193	KAST 19499M001	4646949.39015	-240747.85802	4348014.62628	A
198	LARE 19440M001	4632832.26184	-279026.71861	4360314.06142	A
199	LAZK 19354S001	4666098.65966	-178186.77665	4330463.30620	A
203	LEIT 19428M001	4663521.25333	-155859.30180	4334519.51558	A
260	ORON 19427M001	4659696.09942	-130865.32007	4338948.51428	A
33	PASA 19351S001	4644909.38047	-156645.65090	4353622.71159	W
36	RI01 13448M002	4708447.13647	-199490.87299	4284089.36418	W
37	SALA 13469M001	4803054.75309	-462131.66881	4158378.69606	W
38	SC0A 10088M002	4639940.82240	-136225.52416	4359552.04800	W
321	SOPU 19386M001	4643998.21754	-255914.48943	4350062.77590	A
342	TERU 13487M001	4867391.63235	-95523.95621	4108341.30018	A
375	VITO 19385M001	4679398.01048	-218437.09189	4314897.99563	A
49	YEBE 13420M001	4848724.85810	-261632.53549	4123093.94720	W
50	ZARA 13462M001	4773803.48760	-73506.58194	4215453.72054	W

6 Quality Control

6.1 Mean and Daily Repeatabilities

In this section, the mean and daily repeatabilities of the sites are shown. Repeatabilities refer to the IGS14 solution and are given with respect the Local frame (North-East-Up).

ARA LAC 2089 WEEK FINAL COMBINATION: PRECISE ORBITS 09-FEB-20 16:48

Station	#Days	Weekday 0123456	Repeatability (mm)		
			N	E	U
ACOR 13434M001	7	XXXXXX	1.30	0.58	3.50
ALDA 19383M001	7	XXXXXX	1.80	1.61	4.20
ALSA 19419M001	7	XXXXXX	2.60	1.84	2.04
AMUR 19388M001	7	XXXXXX	1.08	1.06	3.61
BLAZ 10074M002	7	XXXXXX	0.64	0.63	2.63
BRZR 19387M001	7	XXXXXX	0.87	0.82	4.48
CACE 13447M001	7	XXXXXX	1.02	1.03	1.62
CANT 13438M001	7	XXXXXX	0.45	0.47	3.03
CREU 13432M001	7	XXXXXX	1.20	0.56	2.50
EBRE 13410M001	7	XXXXXX	1.30	1.23	2.81
ELGE 19353S001	7	XXXXXX	0.78	0.88	2.42
EMAZ 17001M001	7	XXXXXX	0.66	0.81	2.87
GERN 19389M001	7	XXXXXX	0.63	0.73	2.85
IGEL 19352S001	7	XXXXXX	1.14	0.61	1.21
ISPS 19484M001	7	XXXXXX	1.00	0.76	2.65
KAST 19499M001	7	XXXXXX	0.72	0.70	2.89
LARE 19440M001	7	XXXXXX	1.12	1.25	2.97
LAZK 19354S001	7	XXXXXX	1.11	0.77	4.89
LEIT 19428M001	7	XXXXXX	0.89	1.13	3.37
ORDN 19427M001	7	XXXXXX	0.73	0.67	3.56
PASA 19351S001	7	XXXXXX	0.75	0.80	2.23
RI01 13448M002	7	XXXXXX	0.70	0.57	1.96
SALA 13469M001	7	XXXXXX	0.67	0.49	3.57
SCDA 10088M002	7	XXXXXX	2.11	0.85	1.88
SOPU 19386M001	7	XXXXXX	1.65	0.76	3.03
TERU 13487M001	7	XXXXXX	1.74	1.60	4.89
VITO 19385M001	7	XXXXXX	0.94	0.58	2.40
YEBE 13420M001	7	XXXXXX	0.56	1.46	2.25
ZARA 13462M001	7	XXXXXX	1.18	0.94	2.80

Comparison of individual solutions:

ACOR 13434M001	N	1.30	-2.75	0.54	0.37	0.61	-1.05	-0.08	0.78
ACOR 13434M001	E	0.58	-0.37	0.95	0.22	-0.84	-0.23	0.40	-0.10
ACOR 13434M001	U	3.50	3.95	-0.12	3.18	4.74	-2.08	1.66	-4.25
ALDA 19383M001	N	1.80	1.70	2.79	1.14	1.13	-1.70	-1.57	-0.90
ALDA 19383M001	E	1.61	-0.77	-2.29	-0.85	0.84	2.81	0.17	0.62
ALDA 19383M001	U	4.20	-5.54	-5.86	1.63	3.52	4.55	-1.64	1.51
ALSA 19419M001	N	2.60	-1.33	2.76	2.54	1.77	-1.22	-4.35	1.16
ALSA 19419M001	E	1.84	-3.57	0.09	0.00	-0.01	1.43	2.23	0.75
ALSA 19419M001	U	2.04	-2.50	-1.56	2.73	-1.47	2.09	-0.20	1.53
AMUR 19388M001	N	1.08	2.13	0.56	-0.71	0.09	-0.44	1.22	-0.09
AMUR 19388M001	E	1.06	2.22	-0.36	-0.47	-0.49	0.47	-0.86	-0.58
AMUR 19388M001	U	3.61	-4.51	-4.62	1.59	2.19	2.82	-2.60	3.83
BLAZ 10074M002	N	0.64	-0.12	-0.54	-0.36	0.84	0.78	0.56	0.64
BLAZ 10074M002	E	0.63	-0.54	0.11	0.47	0.17	1.34	0.19	-0.12
BLAZ 10074M002	U	2.63	-3.44	-1.98	2.41	1.74	-0.07	0.16	4.12
BRZR 19387M001	N	0.87	-0.63	1.73	-0.00	0.15	-0.20	0.73	0.74
BRZR 19387M001	E	0.82	0.53	-0.11	-0.78	1.31	0.71	0.90	-0.39
BRZR 19387M001	U	4.48	3.45	-3.95	-0.18	7.15	3.01	-5.62	1.03
CACE 13447M001	N	1.02	0.73	0.22	-2.03	0.69	-0.93	0.24	0.46
CACE 13447M001	E	1.03	1.01	-0.62	-1.69	0.22	1.07	0.77	0.56
CACE 13447M001	U	1.62	-2.27	-0.31	-1.07	0.52	1.10	2.81	-0.05
CANT 13438M001	N	0.45	-0.46	-0.14	0.11	0.10	0.66	0.72	-0.08
CANT 13438M001	E	0.47	0.42	0.24	0.12	0.77	0.67	0.07	0.16
CANT 13438M001	U	3.03	4.21	0.80	4.98	-0.04	-1.13	3.04	1.22
CREU 13432M001	N	1.20	-0.11	-0.67	1.04	2.04	1.23	0.00	-1.19
CREU 13432M001	E	0.56	-0.69	-0.63	0.57	0.74	-0.33	0.09	-0.06
CREU 13432M001	U	2.50	2.37	-1.87	-2.11	2.35	-2.67	-3.23	-0.94
EBRE 13410M001	N	1.30	-1.04	-1.08	-1.36	0.76	1.47	1.08	1.45
EBRE 13410M001	E	1.23	-0.97	0.43	2.53	0.23	-1.15	-0.47	-0.03
EBRE 13410M001	U	2.81	1.18	4.75	-0.70	-1.64	-3.49	-0.03	-2.83
ELGE 19353S001	N	0.78	-0.20	0.24	-0.80	0.27	0.39	1.21	1.09
ELGE 19353S001	E	0.88	1.75	-0.95	0.06	0.48	0.49	0.35	0.21
ELGE 19353S001	U	2.42	-1.84	-1.09	4.07	3.40	1.42	0.21	-0.58
EMAZ 17001M001	N	0.66	0.92	-0.59	0.27	0.96	0.26	-0.22	-0.56
EMAZ 17001M001	E	0.81	1.48	0.21	-0.65	-0.47	0.50	0.81	0.37
EMAZ 17001M001	U	2.87	3.16	1.65	2.46	4.05	-1.51	-0.98	3.31
GERN 19389M001	N	0.63	-0.16	-0.09	-0.23	0.70	0.36	0.87	0.94
GERN 19389M001	E	0.73	0.89	0.52	-0.72	-0.06	0.93	0.81	-0.30
GERN 19389M001	U	2.85	0.25	-4.41	-0.07	2.12	4.56	1.56	1.25
IGEL 19352S001	N	1.14	-1.52	0.08	-0.34	0.74	0.61	1.37	1.60
IGEL 19352S001	E	0.61	0.85	-0.20	-0.29	0.89	0.10	0.74	-0.08
IGEL 19352S001	U	1.21	0.51	-1.07	1.65	-0.07	1.13	0.36	1.79
ISPS 19484M001	N	1.00	-1.15	0.47	0.58	1.65	0.46	-0.50	0.97
ISPS 19484M001	E	0.76	0.21	-0.04	-0.28	1.49	0.20	0.81	-0.62
ISPS 19484M001	U	2.65	3.30	0.74	1.69	4.47	-0.95	-1.39	-2.22
KAST 19499M001	N	0.72	0.39	-0.66	0.14	1.17	-0.04	0.31	1.04
KAST 19499M001	E	0.70	0.66	0.49	-0.92	0.41	1.01	0.10	0.48
KAST 19499M001	U	2.89	4.91	-2.65	-2.34	-0.57	1.65	1.43	2.87
LARE 19440M001	N	1.12	-1.61	-0.61	-0.56	0.72	0.43	1.51	1.12
LARE 19440M001	E	1.25	-1.17	-1.40	0.67	1.06	1.88	0.96	0.27
LARE 19440M001	U	2.97	4.41	0.75	2.30	2.09	-2.31	0.81	4.16
LAZK 19354S001	N	1.11	0.93	0.61	0.86	0.81	0.73	-1.69	-1.20
LAZK 19354S001	E	0.77	0.92	0.40	-0.05	0.34	0.01	1.48	-0.48
LAZK 19354S001	U	4.89	-9.34	0.09	3.40	4.42	2.29	3.63	2.59
LEIT 19428M001	N	0.89	-1.20	0.22	-0.35	0.92	1.11	0.96	0.32
LEIT 19428M001	E	1.13	-1.70	0.66	-0.26	-0.25	0.86	1.42	1.22
LEIT 19428M001	U	3.37	0.30	-2.44	0.29	2.47	4.82	-5.65	-0.92
ORDN 19427M001	N	0.73	0.51	0.80	-0.73	-0.51	1.06	0.51	-0.39
ORDN 19427M001	E	0.67	1.30	0.44	0.17	0.61	0.46	0.18	-0.41
ORDN 19427M001	U	3.56	-6.73	-2.24	-0.25	-1.16	0.24	-0.37	4.91
PASA 19351S001	N	0.75	-0.16	-0.52	-0.07	0.79	0.47	0.67	1.32
PASA 19351S001	E	0.80	1.72	0.40	-0.52	0.37	0.40	-0.03	-0.36

PASA 19351S001	U	2.23	0.54	-3.16	0.75	2.96	2.61	1.39	-1.25
RID1 13448M002	N	0.70	1.65	-0.19	0.04	-0.03	0.38	0.08	0.21
RID1 13448M002	E	0.57	0.81	-0.18	0.04	0.65	0.79	0.42	0.14
RID1 13448M002	U	1.96	1.84	0.97	0.46	1.75	-3.16	-0.04	2.31
SALA 13469M001	N	0.67	1.24	-0.50	-0.14	-0.45	-0.41	-0.70	0.04
SALA 13469M001	E	0.49	0.87	0.03	0.21	0.19	-0.78	0.09	0.09
SALA 13469M001	U	3.57	-6.98	-0.09	-0.16	-0.95	4.76	-0.66	-1.98
SCDA 10088M002	N	2.11	3.38	-1.80	-1.82	-0.04	-1.30	1.87	1.91
SCDA 10088M002	E	0.85	1.00	-0.38	-0.88	0.11	0.47	1.27	0.74
SCDA 10088M002	U	1.88	-0.62	0.01	1.59	0.82	-0.27	0.04	4.20
SOPU 19386M001	N	1.65	-2.40	-0.88	1.11	2.19	0.33	-0.08	1.94
SOPU 19386M001	E	0.76	-1.02	0.68	0.60	0.87	0.86	-0.03	0.33
SOPU 19386M001	U	3.03	2.45	-4.48	-0.67	1.37	4.30	0.33	2.82
TERU 13487M001	N	1.74	-1.28	-1.11	-3.65	0.03	0.70	1.02	0.66
TERU 13487M001	E	1.60	-1.23	-0.60	2.57	-1.42	-1.03	-1.55	-1.21
TERU 13487M001	U	4.89	4.61	0.17	10.76	0.72	-1.43	-1.07	-1.58
VITO 19385M001	N	0.94	1.83	0.16	-0.35	0.69	-0.34	1.04	-0.29
VITO 19385M001	E	0.58	-0.09	-1.05	0.06	0.14	0.56	0.74	0.16
VITO 19385M001	U	2.40	-2.49	-2.59	1.31	2.27	0.73	-2.86	2.49
YEBE 13420M001	N	0.56	-0.79	0.43	0.27	0.04	-0.15	-0.55	-0.80
YEBE 13420M001	E	1.46	0.12	-1.06	-2.50	-0.06	1.50	1.38	1.14
YEBE 13420M001	U	2.25	0.87	1.71	1.95	-3.05	-1.85	-0.89	3.06
ZARA 13462M001	N	1.18	1.97	0.46	-1.61	0.91	0.37	0.62	-0.54
ZARA 13462M001	E	0.94	0.25	-0.01	-1.22	0.62	1.13	0.98	1.09
ZARA 13462M001	U	2.80	-1.87	-3.55	3.84	-2.39	-2.24	-1.99	1.19

6.2 Datum verification

In this section, the datum verification is shown. A 3 parameter Helmert 3D (3 translations) is computed to the minimally constrained sites.

LOCAL GEODETIC DATUM: IGS14
RESIDUALS IN LOCAL SYSTEM (NORTH, EAST, UP)

NUM	NAME	FLG	RESIDUALS IN MILLIMETERS		
1	ACOR 13434M001	I W	-0.49	-1.16	-2.33
2	ALAC 13433M001	I W	-0.34	0.16	2.12
3	ALBA 13452M001	I W	-1.11	-0.67	0.57
4	ALME 13437M001	I W	-2.14	1.20	0.35
5	BCLN 13412M001	I W	-0.18	-0.47	3.10
6	BELL 13431M001	I W	1.62	3.27	1.68
7	BORR 13480M001	I W	-1.89	-1.38	0.87
8	BRST 10004M004	I W	-0.86	-1.59	-0.72
9	CACE 13447M001	I W	0.49	1.22	3.66
10	CANT 13438M001	I W	0.60	-0.83	0.77
11	CARG 19412M001	I W	-0.74	-1.27	1.77
13	CEU1 13449M002	I W	-0.38	0.34	-4.34
14	COBA 13453M001	I W	0.20	0.54	-3.64
15	CREU 13432M001	I W	-0.78	1.85	-0.09
17	EBRE 13410M001	I W	0.05	1.99	-1.63
18	ESCO 13435M001	I W	1.44	-0.59	3.47
19	FUNC 13911S001	I W	3.26	-0.91	-6.93
22	HUEL 13451M001	I W	0.30	2.44	-4.73
23	IZAN 13109M002	I W	-1.28	-3.00	-0.17
25	LLIV 13436M001	I W	-0.01	0.12	-0.54
26	LPAL 81701M001	I W	-3.50	-1.24	-1.70
27	LROC 10023M001	I W	-0.18	-0.68	2.69
28	MALA 13443M001	I W	0.06	-0.87	0.76
29	MAS1 31303M002	I W	-1.71	-1.68	2.04
32	MELI 19379M001	I W	-1.28	1.07	-1.61
33	PASA 19351S001	I W	0.07	-0.21	-0.28
34	PDEL 31906M004	I W	2.98	-0.35	-3.41
36	RID1 13448M002	I W	-0.25	-0.19	-0.37
37	SALA 13469M001	I W	-0.86	1.08	-1.17
38	SCOA 10088M002	I W	-0.17	0.21	-0.93
39	SFER 13402M004	I W	0.15	-1.85	2.37
42	SONS 13446M001	I W	-0.17	0.74	-4.03
44	TERC 31909M001	I W	3.84	-6.62	-8.17
46	VALA 13463M002	I W	-1.15	1.18	2.36
47	VALE 13439M001	I W	-0.67	1.91	3.79
48	VIGO 13450M001	I W	1.38	-0.15	4.79
49	YEBE 13420M001	I W	0.24	2.57	3.27
50	ZARA 13462M001	I W	1.20	1.46	0.57
51	ZIMM 14001M004	I W	2.28	2.37	5.80
RMS / COMPONENT			1.46	1.79	3.10
MEAN			0.00	0.00	-0.00
MIN			-3.50	-6.62	-8.17
MAX			3.84	3.27	5.80

NUMBER OF PARAMETERS : 3
NUMBER OF COORDINATES : 117
RMS OF TRANSFORMATION : 2.23 MM

BARYCENTER COORDINATES:

LATITUDE : 39 43 1.41
LONGITUDE : - 5 15 34.67
HEIGHT : -51.112 KM

PARAMETERS:

TRANSLATION IN N : 0.00 +- 0.36 MM
TRANSLATION IN E : 0.00 +- 0.36 MM
TRANSLATION IN U : -0.00 +- 0.36 MM

6.3 Adjustment Statistics

In this section, the summary of the global adjustment and not subnetworks are shown. Also, the Helmert parameters of the combined solution with respect the daily solutions are shown.

```
* STATISTICAL PARAMETER----- VALUE(S)-----
NUMBER OF OBSERVATIONS          17217451
NUMBER OF UNKNOWN(S)            201645
NUMBER OF DEGREES OF FREEDOM    17015806
PHASE MEASUREMENTS SIGMA        0.00100
SAMPLING INTERVAL (SECONDS)      180
VARIANCE FACTOR                  1.731432274821761

Helmert Transformation Parameters With Respect to Combined Solution:
-----
Sol  Rms (m)      Translation (m)      Rotation (")      Scale (ppm)
      X          Y          Z          X          Y          Z
-----
 1  0.00290    -0.0232 -0.0160  0.0312  0.0002 -0.0013 -0.0005  -0.00051
 2  0.00279    -0.0056 -0.0124  0.0041  0.0002 -0.0002 -0.0004   0.00015
 3  0.00266    -0.0109 -0.0150  0.0152  0.0002 -0.0006 -0.0005  -0.00031
 4  0.00299    -0.0013 -0.0029 -0.0016  0.0001  0.0000 -0.0001   0.00028
 5  0.00230     0.0062 -0.0220 -0.0026  0.0004  0.0002 -0.0006  -0.00085
 6  0.00181    -0.0015 -0.0142  0.0057  0.0003 -0.0002 -0.0003  -0.00049
 7  0.00192     0.0065 -0.0175 -0.0038  0.0003  0.0002 -0.0005  -0.00050
```

```
Statistics of individual solutions:
-----
File  RMS (m)      DOF  Chi**2/DOF  #Observations authentic / pseudo  #Parameters explicit / implicit / singular
-----
 1  0.00136    2444085    1.85          2474849      3          993      29774      0
 2  0.00132    2410863    1.74          2440848      3          990      28998      0
 3  0.00133    2428064    1.76          2457593      3          987      28545      0
 4  0.00133    2424551    1.76          2454962      3          984      29430      0
 5  0.00129    2454547    1.66          2484307      3          993      28770      0
 6  0.00128    2390434    1.64          2418228      3          957      26840      0
 7  0.00128    2457406    1.63          2486664      3          978      28283      0
```

7 Equipment

7.1 Receiver List

Serial numbers not shown.

```
*SITE PT SOLN T DATA_START__ DATA_END_____ DESCRIPTION_____ S/N__ FIRMWARE___
ACOR  A  1 P 20:019:00000 20:025:86370 LEICA GR50 -----
ALDA  A  1 P 20:019:00000 20:025:86370 LEICA GR10 -----
ALSA  A  1 P 20:019:00000 20:025:86370 LEICA GR50 -----
AMUR  A  1 P 20:019:00000 20:025:86370 LEICA GR10 -----
BIAZ  A  1 P 20:019:00000 20:025:86370 TRI SP90M -----
BRZR  A  1 P 20:019:00000 20:025:86370 LEICA GR30 -----
CACE  A  1 P 20:019:00000 20:025:86370 TRIMBLE NETR9 -----
CANT  A  1 P 20:019:00000 20:025:86370 LEICA GR10 -----
CREU  A  1 P 20:019:00000 20:025:86370 LEICA GR50 -----
EBRE  A  1 P 20:019:00000 20:025:86370 LEICA GR50 -----
ELGE  A  1 P 20:019:00000 20:025:86370 LEICA GR30 -----
EMAZ  A  1 P 20:019:00000 20:025:86370 LEICA GR30 -----
GERN  A  1 P 20:019:00000 20:025:86370 LEICA GR30 -----
IGEL  A  1 P 20:019:00000 20:025:86370 LEICA GR30 -----
ISPS  A  1 P 20:019:00000 20:025:86370 TRIMBLE NETR9 -----
KAST  A  1 P 20:019:00000 20:025:86370 LEICA GR30 -----
LARE  A  1 P 20:019:00000 20:025:86370 LEICA GRX1200GGPRO -----
LAZK  A  1 P 20:019:00000 20:025:86370 LEICA GR30 -----
LEIT  A  1 P 20:019:00000 20:025:86370 LEICA GR50 -----
ORON  A  1 P 20:019:00000 20:025:86370 LEICA GR50 -----
PASA  A  1 P 20:019:00000 20:025:86370 LEICA GR30 -----
RIO1  A  1 P 20:019:00000 20:025:86370 LEICA GR25 -----
SALA  A  1 P 20:019:00000 20:025:86370 LEICA GRX1200+GNSS -----
SCDA  A  1 P 20:019:00000 20:025:86370 LEICA GR25 -----
SOPU  A  1 P 20:019:00000 20:025:86370 LEICA GR30 -----
TERU  A  1 P 20:019:00000 20:025:86370 LEICA GRX1200GGPRO -----
VITO  A  1 P 20:019:00000 20:025:86370 LEICA GR10 -----
YEBE  A  1 P 20:019:00000 20:025:86370 TRIMBLE NETR9 -----
ZARA  A  1 P 20:019:00000 20:025:86370 TRIMBLE NETR9 -----
```

7.2 Antennas

Serial number ONLY provided in case individual calibrations are available.

```
*SITE PT SOLN T DATA_START__ DATA_END_____ DESCRIPTION_____ S/N__
ACOR  A  1 P 20:019:00000 20:025:86370 LEIAT504 LEIS -----
ALDA  A  1 P 20:019:00000 20:025:86370 LEIAS10 NONE -----
ALSA  A  1 P 20:019:00000 20:025:86370 LEIAR10 NONE -----
AMUR  A  1 P 20:019:00000 20:025:86370 LEIAS10 NONE -----
BIAZ  A  1 P 20:019:00000 20:025:86370 LEIAR25 LEIT -----
BRZR  A  1 P 20:019:00000 20:025:86370 LEIAS10 NONE -----
CACE  A  1 P 20:019:00000 20:025:86370 TRM29659.00 NONE -----
```

CANT	A	1	P	20:019:00000	20:025:86370	LEIAR25.R4	LEIT	25066	---
CREU	A	1	P	20:019:00000	20:025:86370	LEIAR25.R4	NONE	26357	---
EBRE	A	1	P	20:019:00000	20:025:86370	LEIAR25.R4	NONE	26359	---
ELGE	A	1	P	20:019:00000	20:025:86370	LEIAR25.R4	LEIT	----	---
EMAZ	A	1	P	20:019:00000	20:025:86370	LEIAS10	NONE	----	---
GERN	A	1	P	20:019:00000	20:025:86370	LEIAS10	NONE	----	---
IGEL	A	1	P	20:019:00000	20:025:86370	LEIAR20	LEIM	----	---
ISPS	A	1	P	20:019:00000	20:025:86370	TRM59900.00	SCIS	----	---
KAST	A	1	P	20:019:00000	20:025:86370	LEIAS10	NONE	----	---
LARE	A	1	P	20:019:00000	20:025:86370	LEIAT504	NONE	----	---
LAZK	A	1	P	20:019:00000	20:025:86370	LEIAR25.R4	LEIT	----	---
LEIT	A	1	P	20:019:00000	20:025:86370	LEIAR10	NONE	----	---
ORDN	A	1	P	20:019:00000	20:025:86370	LEIAR10	NONE	----	---
PASA	A	1	P	20:019:00000	20:025:86370	LEIAR20	LEIM	73034	---
RID1	A	1	P	20:019:00000	20:025:86370	LEIAR25.R4	LEIT	25138	---
SALA	A	1	P	20:019:00000	20:025:86370	LEIAR25	NONE	----	---
SCDA	A	1	P	20:019:00000	20:025:86370	TRM55971.00	NONE	----	---
SOPU	A	1	P	20:019:00000	20:025:86370	LEIAS10	NONE	----	---
TERU	A	1	P	20:019:00000	20:025:86370	LEIAT504GG	LEIS	----	---
VITO	A	1	P	20:019:00000	20:025:86370	LEIAS10	NONE	----	---
YEBE	A	1	P	20:019:00000	20:025:86370	TRM29659.00	NONE	----	---
ZARA	A	1	P	20:019:00000	20:025:86370	TRM29659.00	NONE	----	---

7.3 Eccentricities

* SITE	PT	SOLN	T	DATA_START_	DATA_END_	AXE	UP_	NORTH_	EAST_
							ARP->	BENCHMARK(M)	-----
ACOR	A	1	P	20:019:00000	20:025:86370	UNE	3.0460	0.0000	0.0000
ALDA	A	1	P	20:019:00000	20:025:86370	UNE	0.0000	0.0000	0.0000
ALSA	A	1	P	20:019:00000	20:025:86370	UNE	0.0000	0.0000	0.0000
AMUR	A	1	P	20:019:00000	20:025:86370	UNE	0.0000	0.0000	0.0000
BIAZ	A	1	P	20:019:00000	20:025:86370	UNE	0.0000	0.0000	0.0000
BRZR	A	1	P	20:019:00000	20:025:86370	UNE	0.0771	0.0000	0.0000
CACE	A	1	P	20:019:00000	20:025:86370	UNE	0.0600	0.0000	0.0000
CANT	A	1	P	20:019:00000	20:025:86370	UNE	3.0490	0.0000	0.0000
CREU	A	1	P	20:019:00000	20:025:86370	UNE	0.0770	0.0000	0.0000
EBRE	A	1	P	20:019:00000	20:025:86370	UNE	0.0770	0.0000	0.0000
ELGE	A	1	P	20:019:00000	20:025:86370	UNE	0.0000	0.0000	0.0000
EMAZ	A	1	P	20:019:00000	20:025:86370	UNE	0.0350	0.0000	0.0000
GERN	A	1	P	20:019:00000	20:025:86370	UNE	0.0771	0.0000	0.0000
IGEL	A	1	P	20:019:00000	20:025:86370	UNE	0.0000	0.0000	0.0000
ISPS	A	1	P	20:019:00000	20:025:86370	UNE	0.0350	0.0000	0.0000
KAST	A	1	P	20:019:00000	20:025:86370	UNE	0.0350	0.0000	0.0000
LARE	A	1	P	20:019:00000	20:025:86370	UNE	0.0000	0.0000	0.0000
LAZK	A	1	P	20:019:00000	20:025:86370	UNE	0.0000	0.0000	0.0000
LEIT	A	1	P	20:019:00000	20:025:86370	UNE	0.0000	0.0000	0.0000
ORDN	A	1	P	20:019:00000	20:025:86370	UNE	0.0000	0.0000	0.0000
PASA	A	1	P	20:019:00000	20:025:86370	UNE	0.0000	0.0000	0.0000
RID1	A	1	P	20:019:00000	20:025:86370	UNE	0.0606	0.0000	0.0000
SALA	A	1	P	20:019:00000	20:025:86370	UNE	0.0600	0.0000	0.0000
SCDA	A	1	P	20:019:00000	20:025:86370	UNE	0.0000	0.0000	0.0000
SOPU	A	1	P	20:019:00000	20:025:86370	UNE	0.0771	0.0000	0.0000
TERU	A	1	P	20:019:00000	20:025:86370	UNE	0.0600	0.0000	0.0000
VITO	A	1	P	20:019:00000	20:025:86370	UNE	0.0000	0.0000	0.0000
YEBE	A	1	P	20:019:00000	20:025:86370	UNE	0.0000	0.0000	0.0000
ZARA	A	1	P	20:019:00000	20:025:86370	UNE	3.2590	0.0000	0.0000

8 References

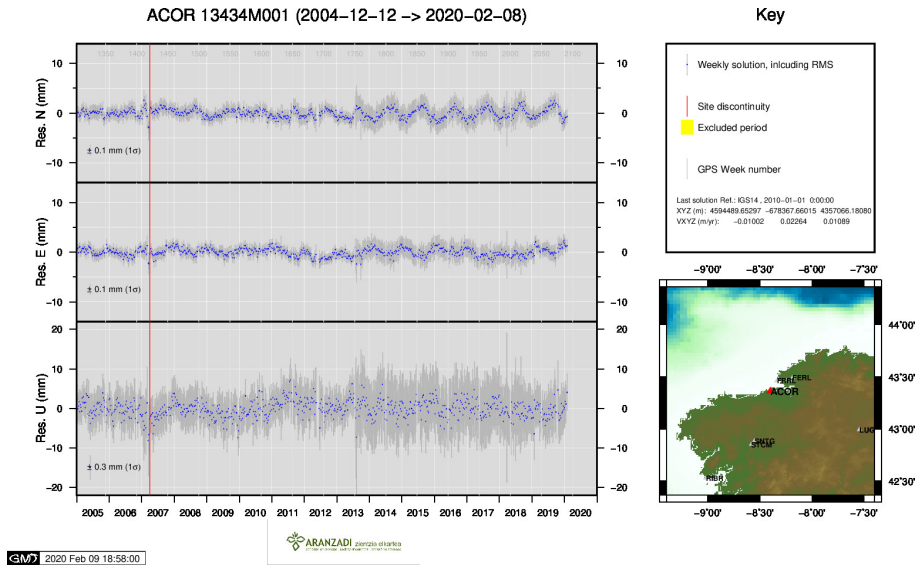
C. Boucher and Z. Altamimi (2011): *Specifications for reference frame fixing in the analysis of a EUREF GPS campaign*. etrs89.ensg.ign.fr/memo-V8.pdf

EPN Coordination Group and the EPN Central Bureau (2018): *Guidelines for the EPN Analysis Centres*. epncb.oma.be/documentation/guidelines/guidelines_analysis_centres.pdf

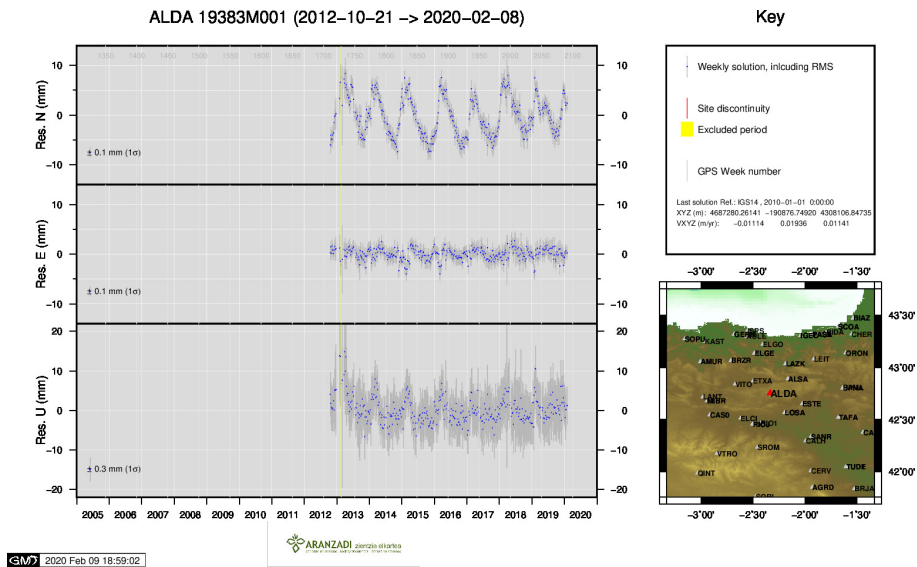
Z. Altamimi (2018): *EUREF Technical Note 1: Relationship and Transformation between the International and the European Terrestrial Reference Systems*. etrs89.ensg.ign.fr/pub/EUREF-TN-1.pdf

9 Cumulative Time Series

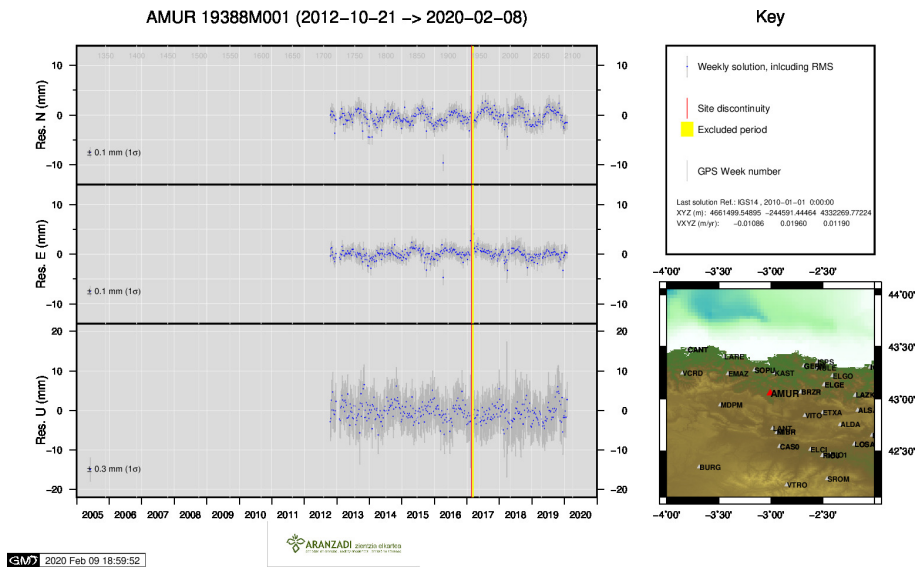
Time series of stations. Latest plots at: <http://geolabpasaia.org/gnss/ARA-net/TSeries/>, or click on the caption of each image.



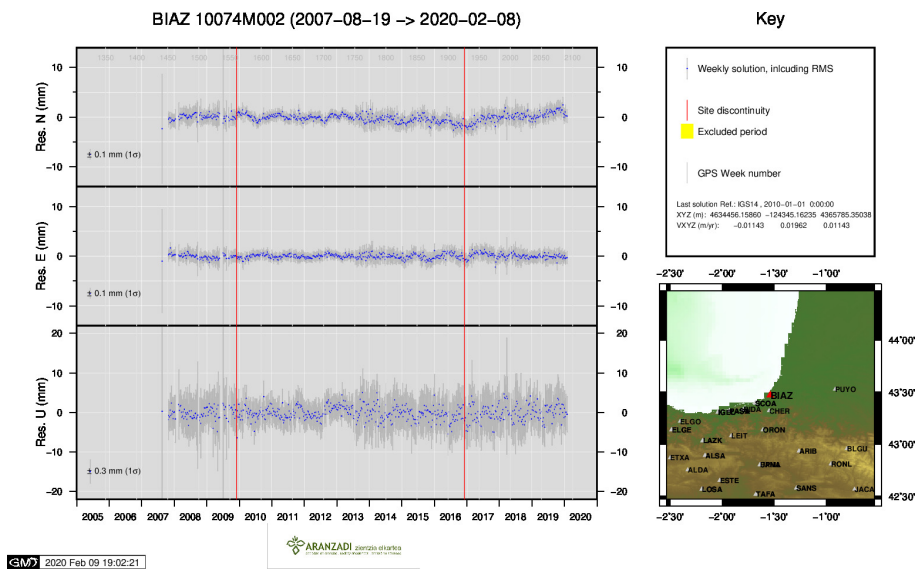
1) ACOR



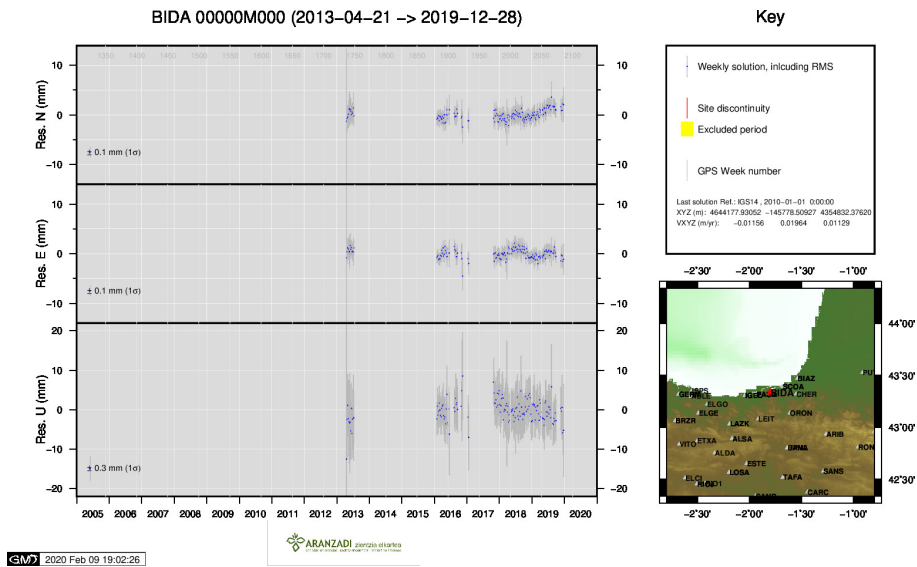
2) ALDA



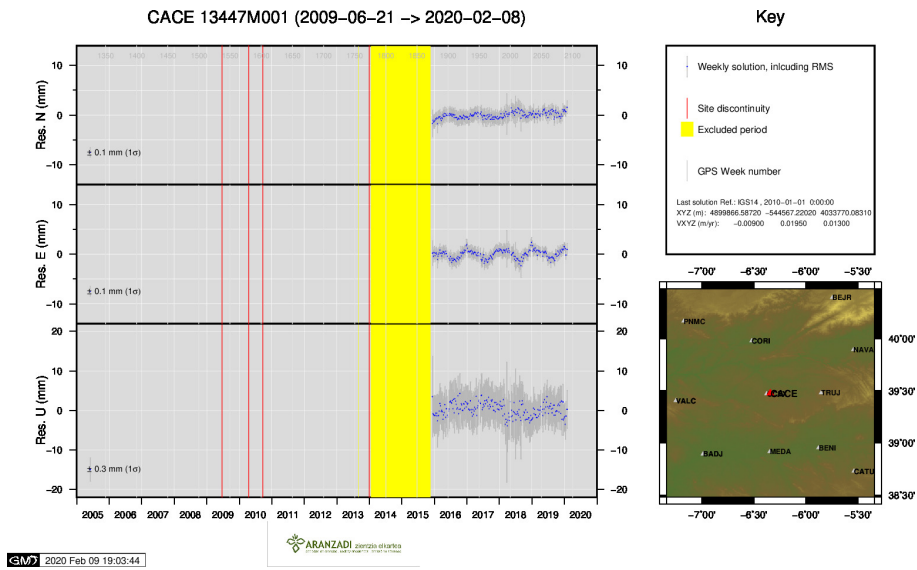
3) AMUR



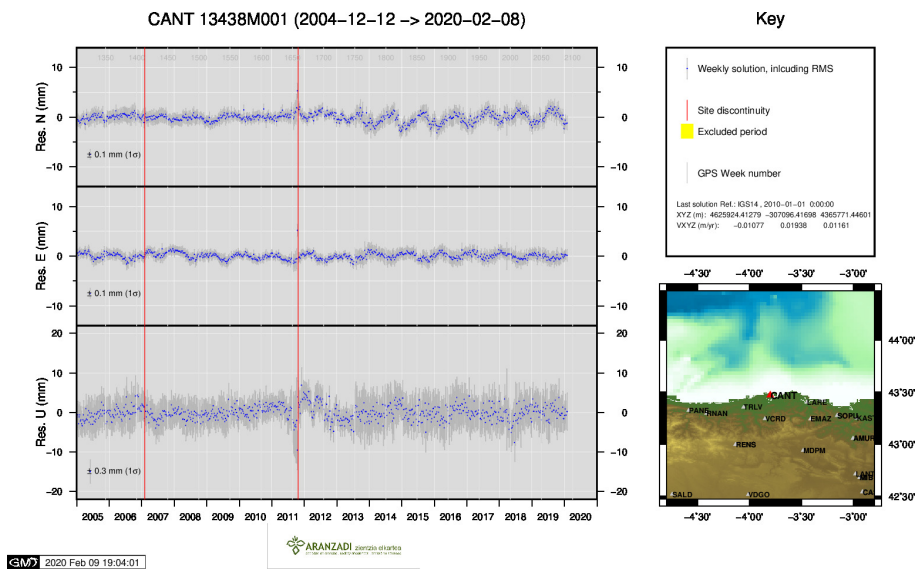
4) BIAZ



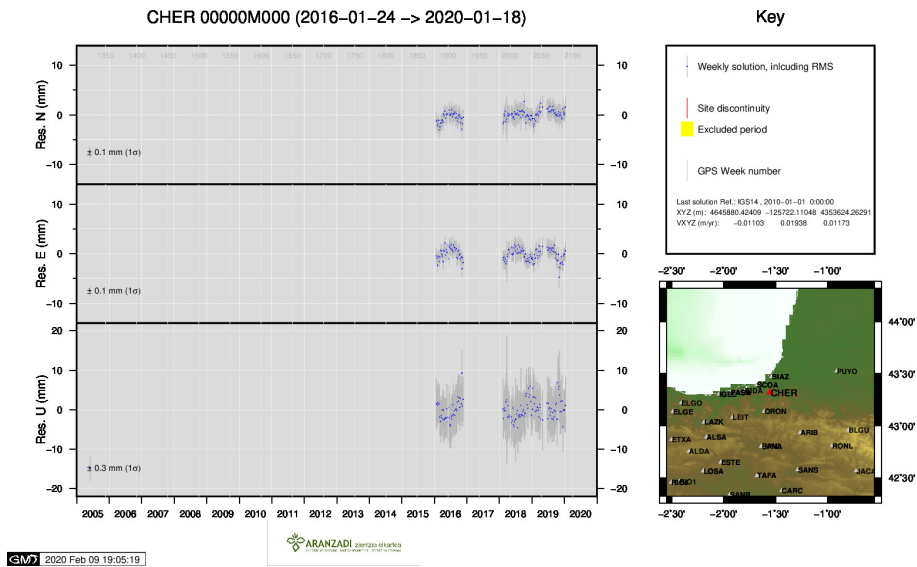
5) BIDA



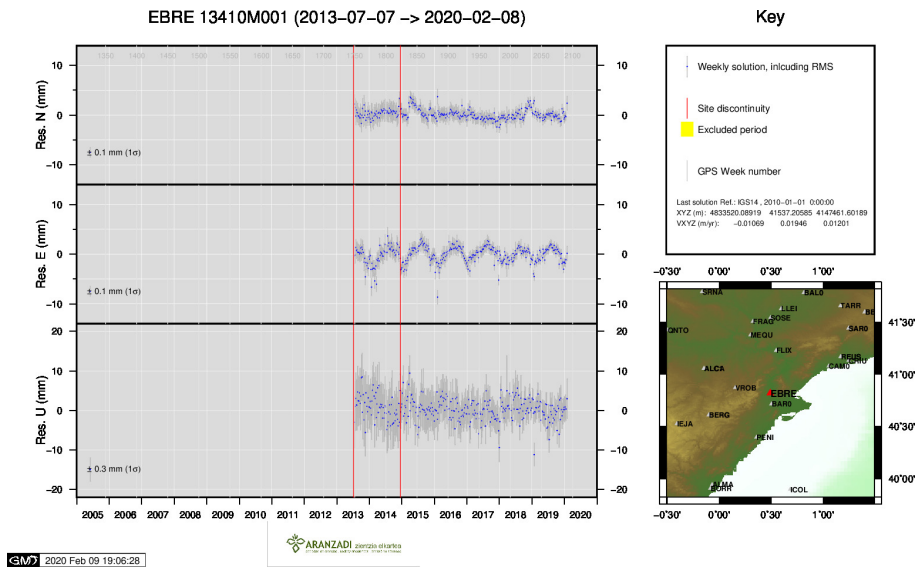
6) CACE



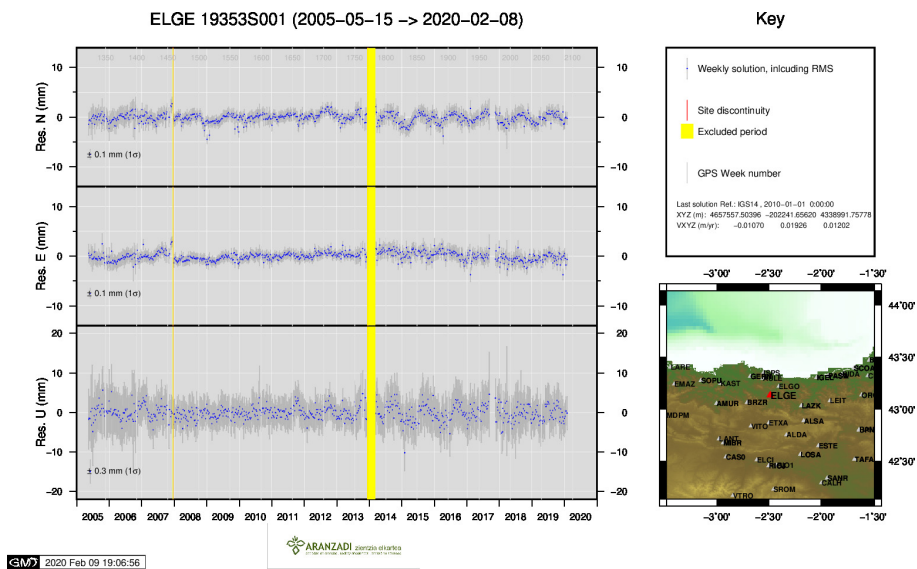
7) CANT



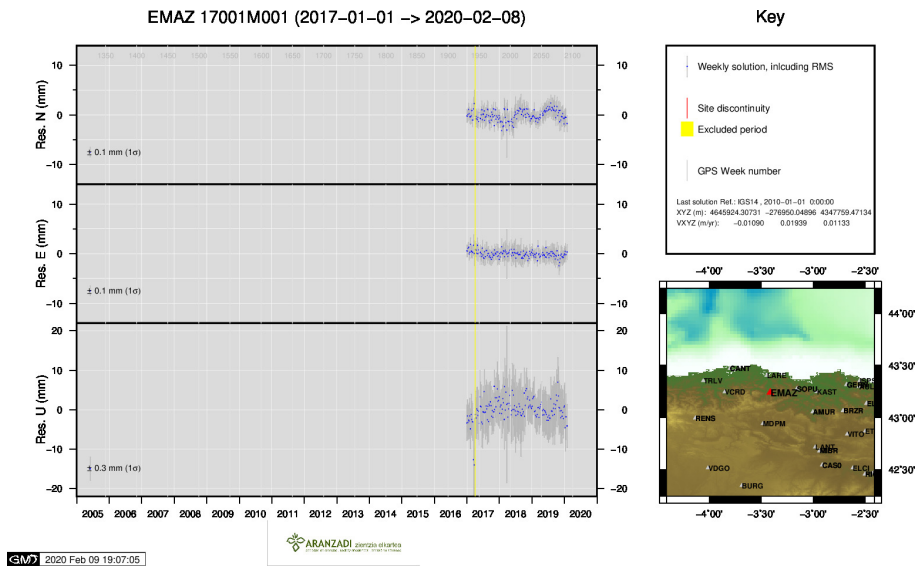
8) CHER



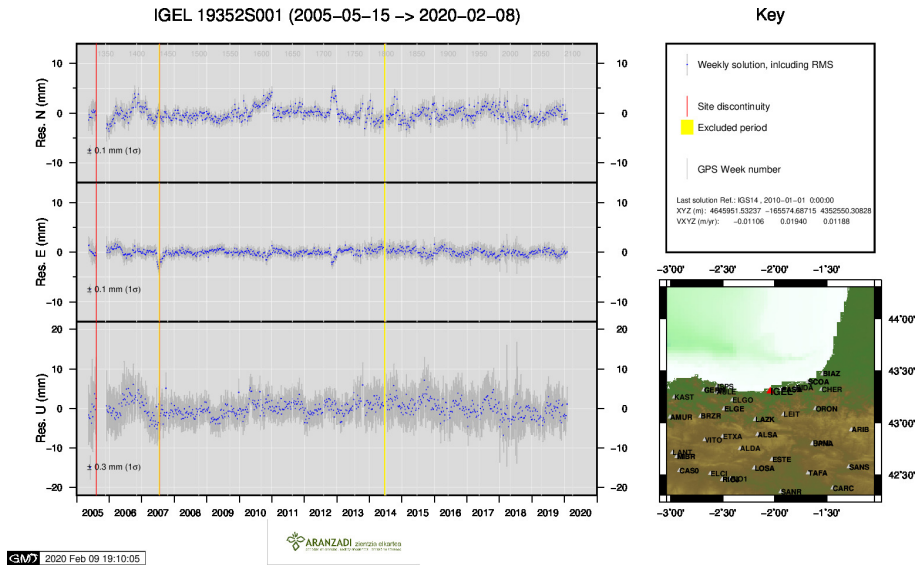
9) EBRE



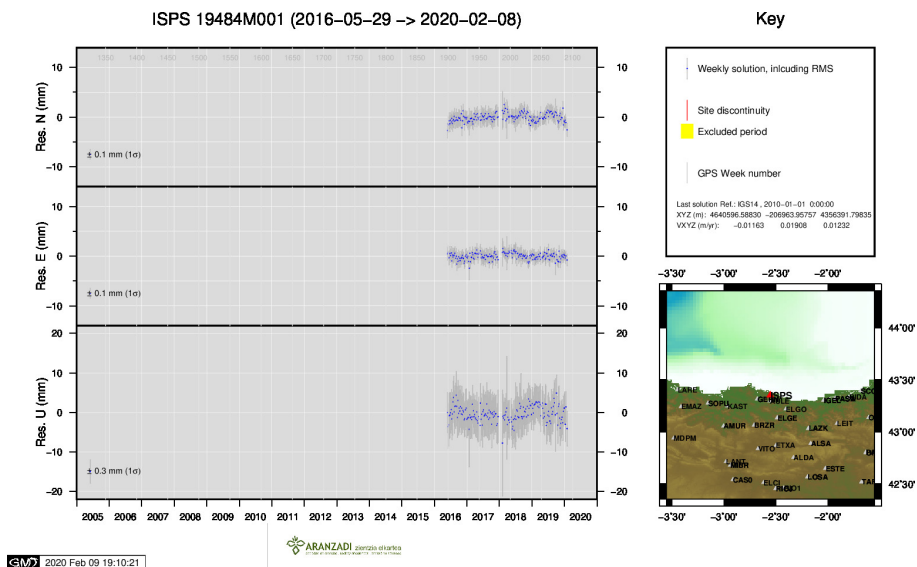
10) ELGE



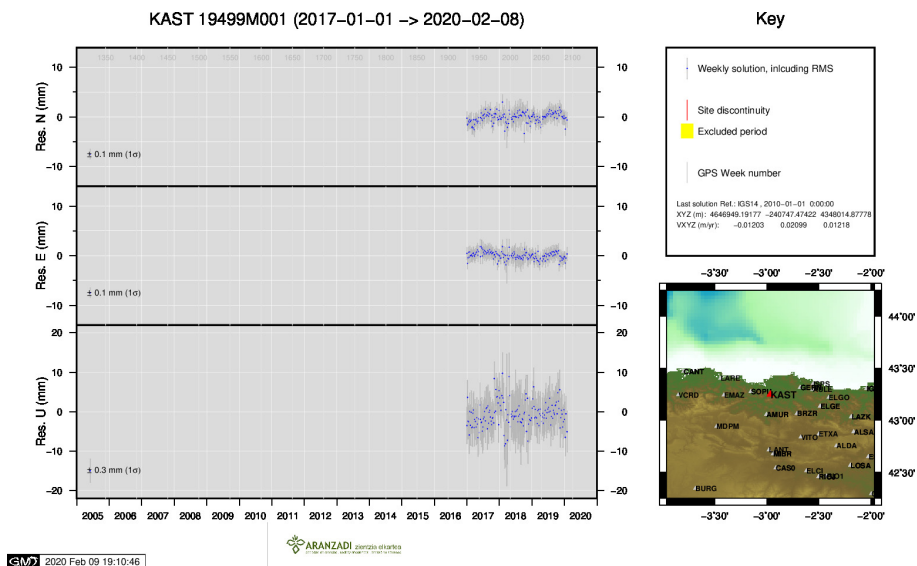
11) EMAZ



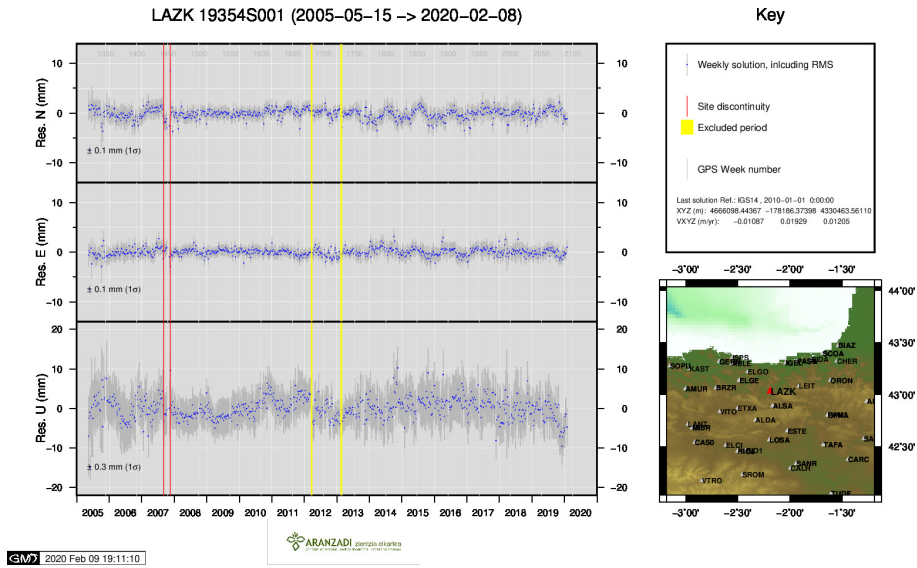
12) IGEL



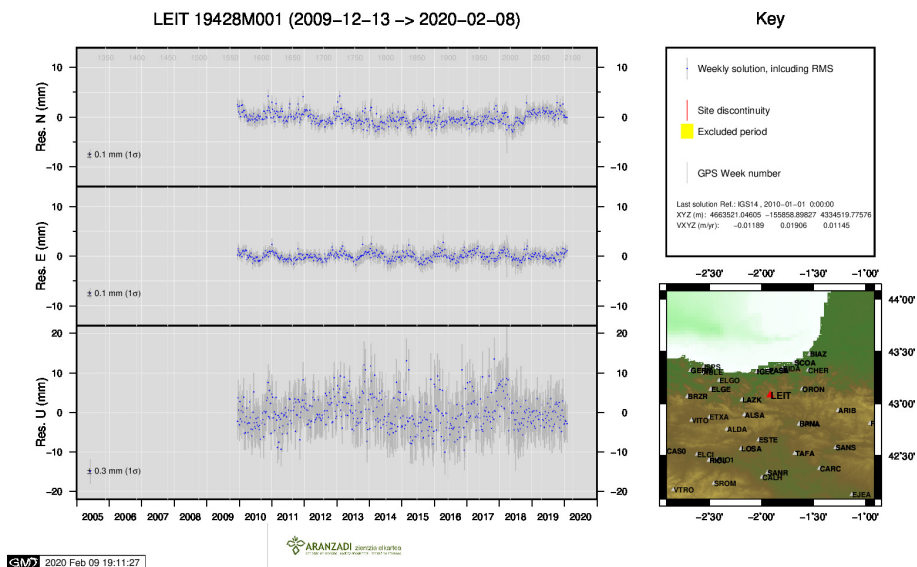
13) ISPS



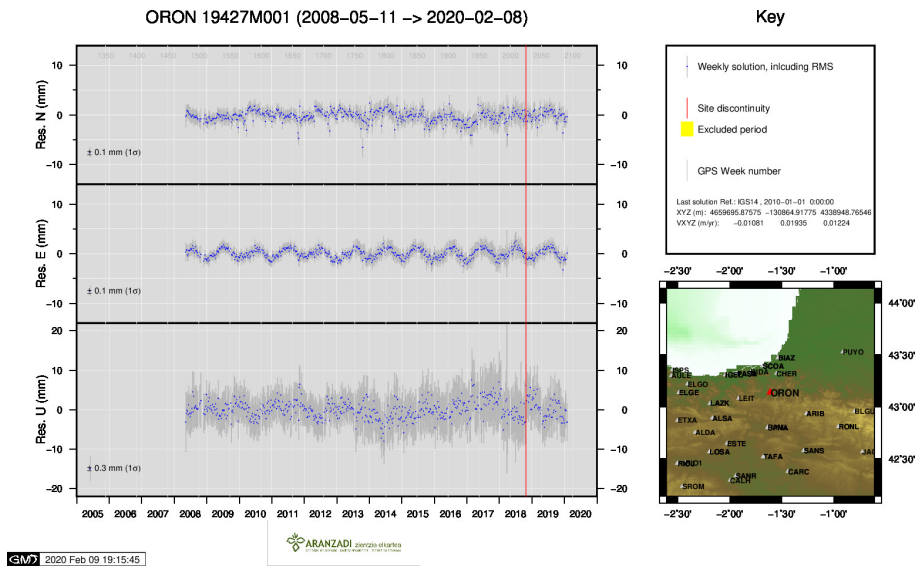
14) KAST



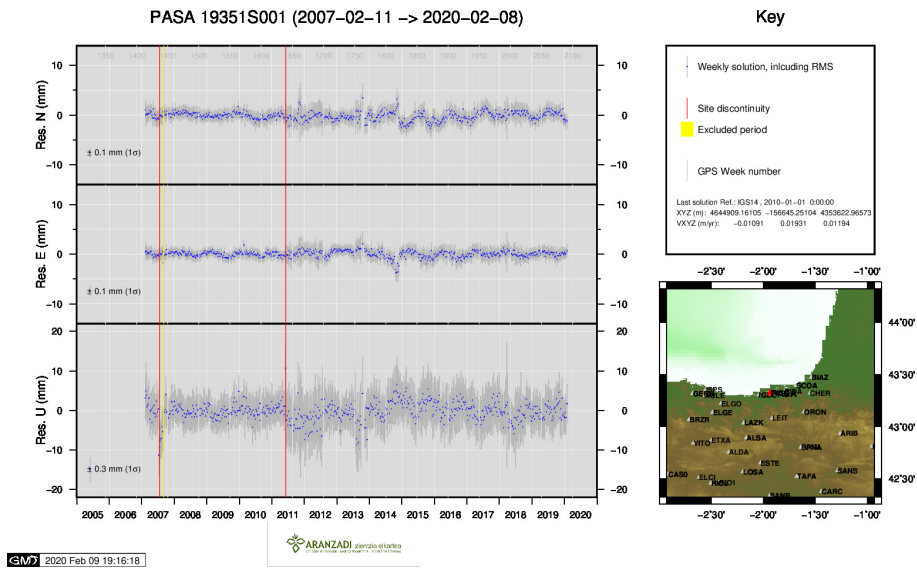
15) LAZK



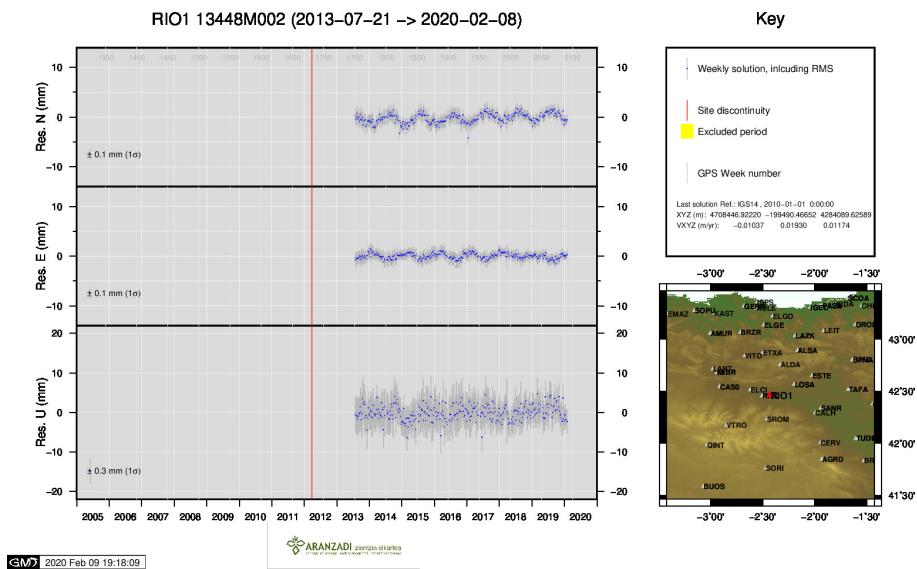
16) LEIT



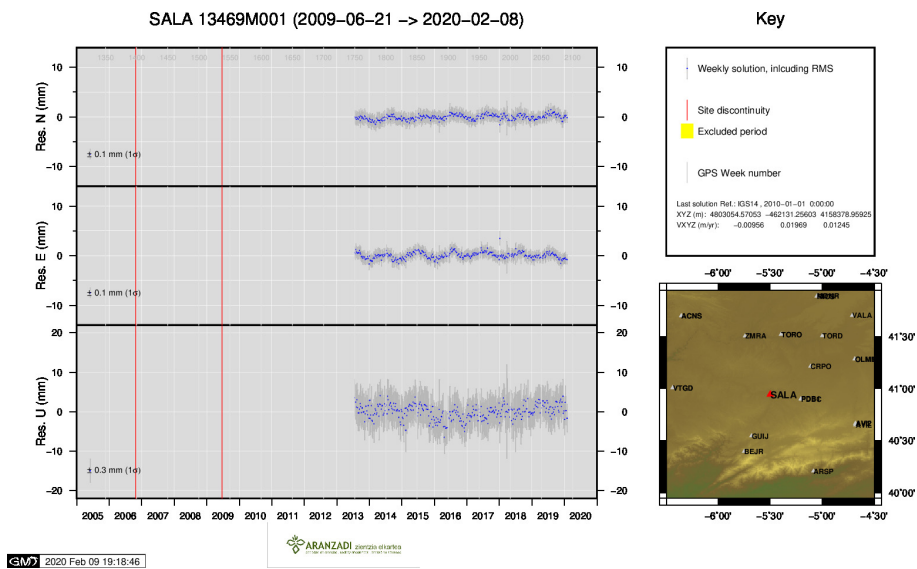
17) ORON



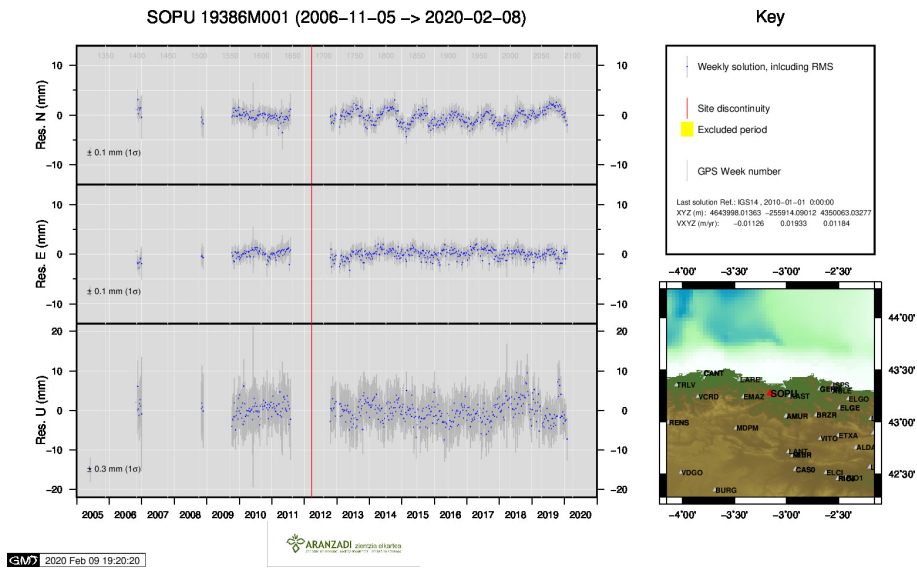
18) PASA



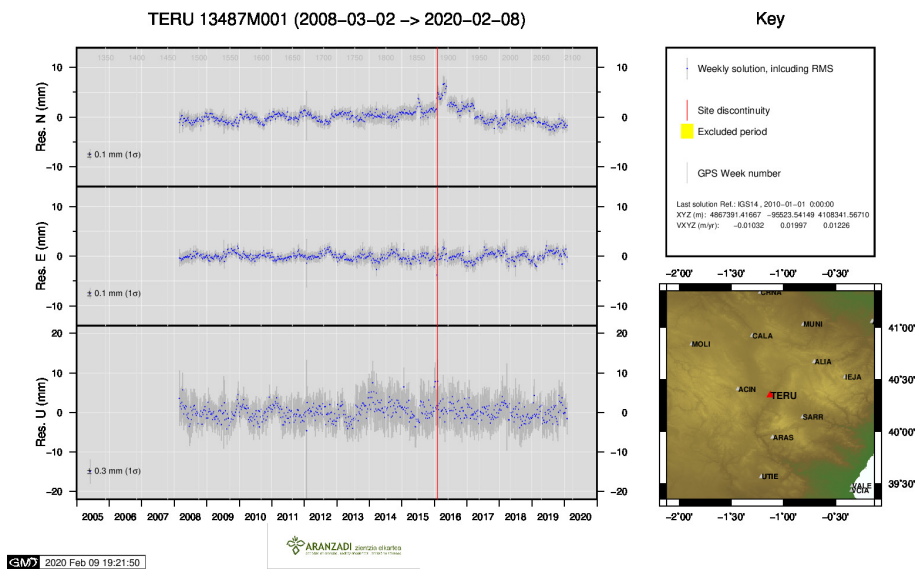
19) RIO1



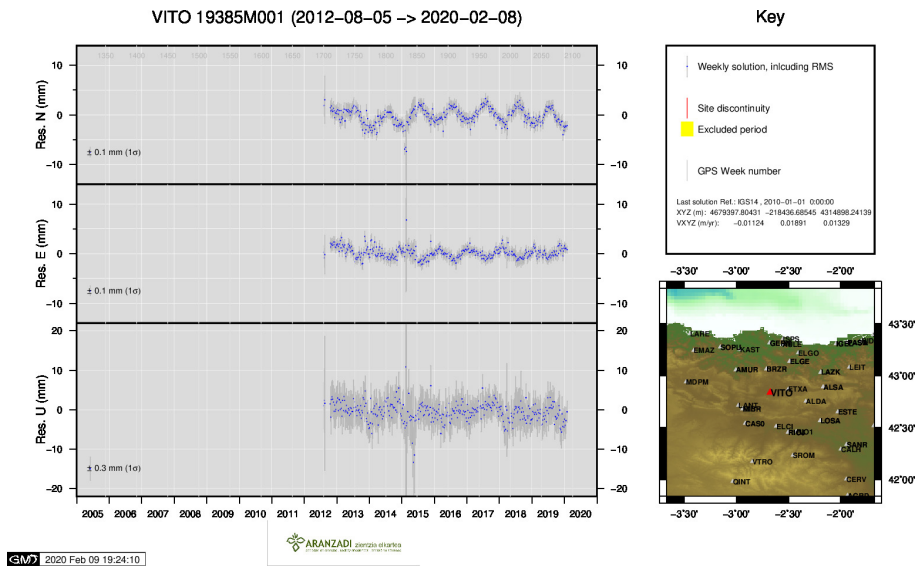
20) SALA



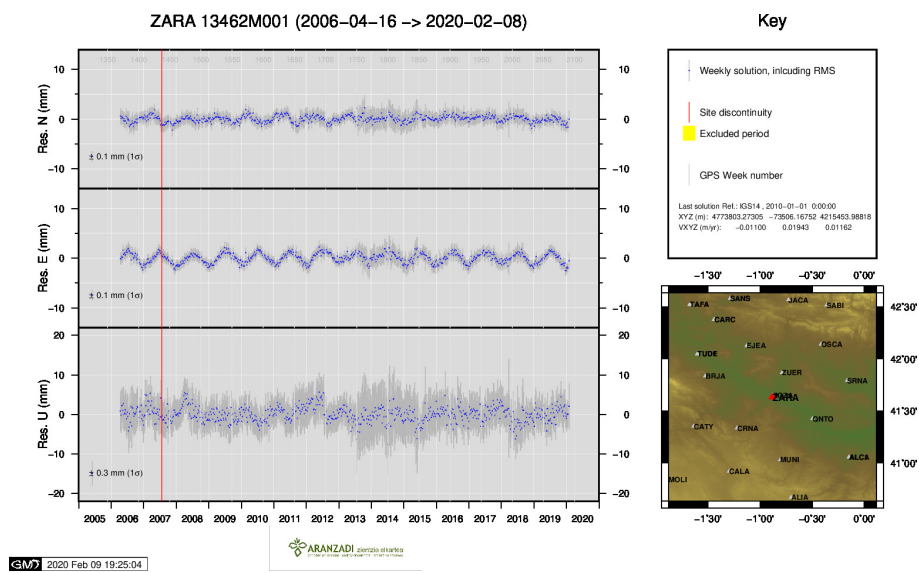
21) SOPU



22) TERU



23) VITO



24) ZARA