

# ARA-DAC Weekly Analysis Result: 2066 (GFA)

## Technical Report

**GPS Week: 2066 (GFA)**

<http://geolabpasaia.org/gnss/ARA-euref/>

**ARA-DAC details:**

Contact person: J. Zurutuza

Contact mail: [geodesia@aranzadi.eus](mailto:geodesia@aranzadi.eus)

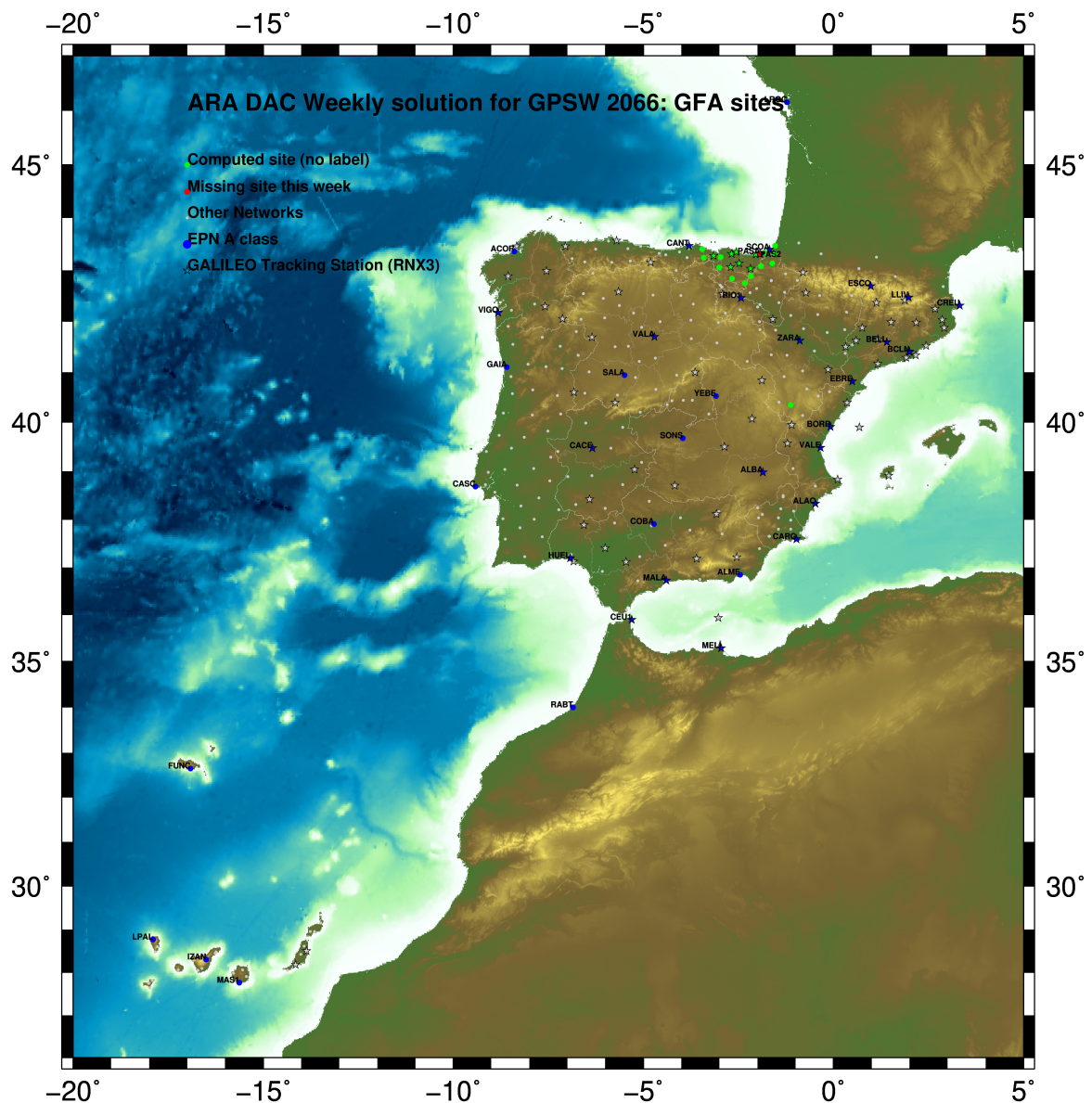
Report generated on 2019/09/02 at 21:50:04



# 1 Introduction

In may 2015 ARA (EUREF's acronym of the ARANZADI's Department of Applied Geodesy), kicks off as a EUREF's Operational Center. In July 2015, the Densification solutions ARA computes routinely in a weekly basis start being submitted to the EUREF's EPN Densification Project.

# 2 Map of Computed Sites



GM 2019 Sep 02 21:49:51

Fig.1: Computed Sites for GPS Week2066 (GFA)

### 3 Main Computation Parameters

The main parameters considered in the ARA analysis follow strictly the EPN recommendations.

- Preprocessing: Independent baselines are defined by the criterion of maximum common observations. Cycle slips are fixed with the MAUPRP program, analysing triple phase differences for each independent baseline. If MAUPRP does not fix all slips for one station, that station is edited out.
- Basic Observable : Carrier phase,  $L_1$  and  $L_2$ ; a priori sigma of single differences:0.002 m.
  - sampling (for ambiguity resolution) : 30 s
  - sampling (for final processing) : 180 s
  - Systems: GPS+GLONASS observations are used (Galileo also used if available from GPSW 1986 on)
- Modelled observable: Double differences of carrier phase using different combinations based on the distance.
- Ground antenna phase center calibrations: Group APCV used from the PCV\_COD.I14 file and individual calibrations from EPNC\_14.ATX. EPN\_A class sites (CRD + VEL) IGS14 used to define the reference frame (from GPSW 1934). If individual calibrations, other from these, are available, they are also included in the analysis.
- Troposphere:
  - 3 deg elev. cutoff; elevation dependent weighting
  - VMF1 mapping function. ZPD parameters are estimated using the VMF1 mapping function.
  - CHENHER gradient estimation model.
- Ionosphere: no a priori model, ionospheric effect almost removed by iono free combination.
- Ocean Loading: FES2004 (Scherneck).
- Atmosph. Loading: computed from a global grid using the GRDS1S2 program of Bernese 5.2.

### 4 Estimated Parameters

- Adjustment: Least Squares
- Rejection Criteria: 3\*rms of single differences, in the weekly combination of daily normal equations (ADDNEQ)
- Station coordinates: minimum constraints (MC) to EPN A class sites (only translations).
- Troposphere: 3 deg. After having obtained coordinates valid for the entire week, tropospheric zenith delay is solved at each site at intervals of 1 hour throughout the week, holding the coordinates constrained at the weekly values.
- Ionospheric: second and third "High Order Ionosphere (HOI)" corrections used, using CODE files, to improve Ambiguity Resolution.
- Satellite clock bias: not estimated because are eliminated by double differencing the phase data.
- Receiver clock bias: not estimated because are eliminated by double differencing the phase data.
- Orbits and ERPs: CODE's orbits and ERP for both rapid and final solutions. DE405 planetary ephemeris and JGM3 Earth geopotential model is used.
- Tidal displacements: according to IERS2010 Conventions. Atmospheric loading corrections used.

- Ambiguity: an advanced ambiguity resolution (AR) scheme is included:
  - Code-Based Wideline (WL) AR for baselines shorter than 6000km, a Melbourne-Wuebbena wide-lane and narrow-lane AR is computed.
  - Phase-Based Wideline ( $L_5$ ) AR for baselines shorter than 200km, the code-based wide-lane AR is replaced by a phase-only wide-lane with a subsequent narrow-lane AR.
  - Quasi-Ionosphere-Free (QIF)AR for the remaining real-valued ambiguities for baselines shorter than 2000km.
  - Direct  $L_1/L_2$  AR for baselines shorter than 20km
- AR Verification: Each baseline is processed by introducing the resolved integer ambiguities and checking the residuals. If there is any problem, the ambiguities are re-initialized.



## 5 Computed Coordinates

In this section the adjusted coordinates are summarized. Note that the sites with an A flag are the computed ones, whereas sites flagged as W are the ones used in the Minimal Constraints condition.

### 5.1 IGS14

The Reference Frame considered in this section is IGS14, release C2010.

ARA LAC 2066 WEEK FINAL COMBINATION: PRECISE ORBITS 02-SEP-19 18:48

---

LOCAL GEODETIC DATUM: IGS14 EPOCH: 2019-08-14 12:00:00

NUM	STATION NAME	X (M)	Y (M)	Z (M)	FLAG
1	ACOR 13434M001	4594489.55526	-678367.44279	4357066.28642	W
33	ALDA 19383M001	4687280.15503	-190876.56340	4308106.95738	A
42	ALSA 19419M001	4677250.82709	-176770.39045	4319079.87715	A
44	AMUR 19388M001	4661499.44267	-244591.25628	4332269.88714	A
78	BLAZ 10074M002	4634456.04952	-124344.97425	4365785.46391	A
79	BIDA 00000M000	4644177.82167	-145778.32069	4354832.49271	A
89	BRZR 19387M001	4662220.98709	-220769.89664	4333309.44683	A
9	CACE 13447M001	4899866.50019	-544567.03456	4033770.20681	W
10	CANT 13438M001	4625924.31025	-307096.23162	4365771.56081	W
114	CHER 00000M000	4645880.31809	-125721.92386	4353624.37793	A
15	CREU 13432M001	4715420.12881	273178.06239	4271946.84629	W
16	EBRE 13410M001	4833519.98670	41537.39445	4147461.71731	W
135	ELGE 19353S001	4657557.40056	-202241.47140	4338991.87548	A
137	EMAZ 17001M001	4645924.20211	-276949.86342	4347759.58207	A
157	GERN 19389M001	4642811.31296	-217222.92317	4353278.88658	A
177	IGEL 19352S001	4645951.42593	-165574.50106	4352550.42408	A
182	ISPS 19484M001	4640596.47696	-206963.77418	4356391.31995	A
187	KAST 19499M001	4646949.07481	-240747.27244	4348014.99642	A
192	LARE 19440M001	4632831.94760	-279026.13688	4360314.43142	A
193	LAZK 19354S001	4666098.33860	-178186.18865	4330463.67930	A
197	LEIT 19428M001	4663520.93027	-155858.71581	4334519.89689	A
253	ORON 19427M001	4659695.77005	-130864.73082	4338948.88414	A
30	PASA 19351S001	4644909.05591	-156645.06548	4353623.08303	W
33	RID1 13448M002	4708446.82358	-199490.28211	4284089.74213	W
34	SALA 13469M001	4803054.47749	-462131.06659	4158379.07936	W
35	SCDA 10088M002	4639940.49420	-136224.93894	4359552.42123	W
313	SOPU 19386M001	4643997.90088	-255913.90388	4350063.14651	A
333	TERU 13487M001	4867391.32016	-95523.34897	4108341.68573	A
366	VITO 19385M001	4679397.69626	-218436.50450	4314898.37279	A
43	YEBE 13420M001	4848724.56173	-261631.92773	4123094.33074	W
44	ZARA 13462M001	4773803.16427	-73505.98066	4215454.09946	W

### 5.2 ETRF2000 (ETRS89) Coordinates

European Terrestrial Reference System, 1989 (ETRS89) is realized by ETRF2000 (Boucher and Altamimi, 2011) and (Altamimi, 2017).

ETRF2000 FINAL COORD. wk 2066 02-SEP-19 18:48

---

LOCAL GEODETIC DATUM: ETRF2000 EPOCH: 2019-08-14 12:00:00

NUM	STATION NAME	X (M)	Y (M)	Z (M)	FLAG
1	ACOR 13434M001	4594489.86362	-678367.98442	4357065.86720	W
33	ALDA 19383M001	4687280.51746	-190877.11367	4308106.53710	A
42	ALSA 19419M001	4677251.19194	-176770.93962	4319079.45781	A
44	AMUR 19388M001	4661499.80045	-244591.80399	4332269.46818	A
78	BLAZ 10074M002	4634456.42378	-124345.51877	4365785.04848	A
79	BIDA 00000M000	4644178.19265	-145778.86630	4354832.07627	A
89	BRZR 19387M001	4662221.34775	-220770.44437	4333309.02810	A
9	CACE 13447M001	4899866.80181	-544567.60774	4033769.76587	W
10	CANT 13438M001	4625924.66300	-307096.77577	4365771.14380	W
114	CHER 00000M000	4645880.69134	-125722.46958	4353623.96161	A
15	CREU 13432M001	4715420.54326	273177.51085	4271946.42942	W
16	EBRE 13410M001	4833520.36527	41536.82972	4147461.28864	W
135	ELGE 19353S001	4657557.76379	-202242.01858	4338991.45734	A
137	EMAZ 17001M001	4645924.55716	-276950.40960	4347759.16390	A
157	GERN 19389M001	4642811.67542	-217223.46884	4353278.46938	A
177	IGEL 19352S001	4645951.79442	-165575.04692	4352550.00727	A
182	ISPS 19484M001	4640596.84085	-206964.31960	4356391.50304	A
187	KAST 19499M001	4646949.43414	-240747.81862	4348014.57862	A
192	LARE 19440M001	4632832.30327	-279026.68168	4360314.01422	A
193	LAZK 19354S001	4666098.70407	-178186.73665	4330463.26079	A
197	LEIT 19428M001	4663521.29865	-155859.26348	4334519.46885	A
253	ORON 19427M001	4659696.14168	-130865.27801	4338948.46670	A
30	PASA 19351S001	4644909.42553	-156645.61120	4353622.66640	W
33	RID1 13448M002	4708447.18332	-199490.83461	4284089.32013	W
34	SALA 13469M001	4803054.79753	-462131.62960	4158378.64689	W
35	SCDA 10088M002	4639940.86663	-136225.48407	4359552.00523	W
313	SOPU 19386M001	4643998.25856	-255914.44979	4350062.72875	A
333	TERU 13487M001	4867391.67989	-95523.91768	4108341.25281	A
366	VITO 19385M001	4679398.05591	-218437.05402	4314897.95278	A
43	YEBE 13420M001	4848724.90294	-261632.49500	4123093.89723	W
44	ZARA 13462M001	4773803.53405	-73506.53958	4215453.67398	W

### 5.3 ETRF2014 (ETRS89) Coordinates

European Terrestrial Reference System, 1989 (ETRS89) is realized by ETRF2014 (Boucher and Altamimi, 2011) and (Altamimi, 2017).

```

ETRF2014 FINAL COORD. wk 2066                                02-SEP-19 18:48
-----
LOCAL GEODETIC DATUM: ETRF2014          EPOCH: 2019-08-14 12:00:00
NUM STATION NAME          X (M)          Y (M)          Z (M)          FLAG
1  ACRD 13434M001         4594489.82116      -678368.02292     4357065.91571     W
33 ALDA 19383M001         4687280.47279      -190877.15352     4308106.58550     A
42 ALSA 19419M001         4677251.14733      -176770.97957     4319079.50624     A
44 AMUR 19388M001         4661499.75620      -244591.84376     4332269.51662     A
78 BIAZ 10074M002         4634456.37943      -124345.55906     4365785.09704     A
79 BIDA 00000M000         4644178.14827      -145778.90648     4354832.12480     A
89 BRZR 19387M001         4662221.30342      -220770.48422     4333309.07655     A
9  CACE 13447M001         4899866.75590      -544567.64552     4033769.81371     W
10 CANT 13438M001         4625924.61927      -307096.81546     4365771.19230     W
114 CHER 00000M000         4645880.64689      -125722.50983     4353624.01014     A
15 CREU 13432M001         4715420.49677       273177.46951     4271946.47805     W
16 EBRE 13410M001         4833520.31837       41536.78964     4147461.33684     W
135 ELGE 19353S001         4657557.71946      -202242.05852     4338991.50580     A
137 EMAZ 17001M001         4645924.51316      -276950.44932     4347759.21237     A
157 GERN 19389M001         4642811.63127      -217223.50878     4353278.51788     A
177 IGEL 19352S001         4645951.75009      -165575.08702     4352550.05578     A
182 ISPS 19484M001         4640596.79669      -206964.35958     4356391.55155     A
187 KAST 19499M001         4646949.39002      -240747.85846     4348014.62709     A
192 LARE 19440M001         4632832.25940      -279026.72144     4360314.06272     A
193 LAZK 19354S001         4666098.65958      -178186.77663     4330463.30925     A
197 LEIT 19428M001         4663521.25412      -155859.30355     4334519.51733     A
253 ORON 19427M001         4659696.09710      -130865.31818     4338948.51519     A
30 PASA 19351S001         4644909.38117      -156645.65133     4353622.71492     W
33 RIO1 13448M002         4708447.13847      -199490.87435     4284089.36848     W
34 SALA 13469M001         4803054.75245      -462131.66806     4158378.69493     W
35 SOGA 10088M002         4639940.82227      -136225.52430     4359552.05377     W
313 SOPU 19386M001         4643998.21452      -255914.48959     4350062.77722     A
333 TERU 13487M001         4867391.63308      -95523.95716     4108341.30086     A
366 VITO 19385M001         4679398.01141      -218437.09381     4314898.00119     A
43 YEBE 13420M001         4848724.85682      -261632.53397     4123093.94524     W
44 ZARA 13462M001         4773803.48815      -73506.57950     4215453.72224     W

```

## 6 Quality Control

### 6.1 Mean and Daily Repeatabilities

In this section, the mean and daily repeatabilities of the sites are shown. Repeatabilities refer to the IGS14 solution and are given with respect the Local frame (North-East-Up).

ARA LAC 2066 WEEK FINAL COMBINATION: PRECISE ORBITS 02-SEP-19 18:48

Station	#Days	Weekday 0123456	Repeatability (mm)		
			N	E	U
ACOR 13434M001	7	XXXXXX	1.10	0.92	2.78
ALDA 19383M001	7	XXXXXX	1.85	0.66	4.70
ALSA 19419M001	7	XXXXXX	1.00	1.00	2.74
AMUR 19388M001	7	XXXXXX	1.29	0.66	4.48
BIAZ 10074M002	7	XXXXXX	0.69	0.64	2.83
BIDA 00000M000	1	X	0.16	1.19	0.36
BRZR 19387M001	6	XXXXXX	0.95	0.63	3.70
CACE 13447M001	7	XXXXXX	0.62	0.45	3.00
CANT 13438M001	7	XXXXXX	0.37	0.34	3.30
CHER 00000M000	7	XXXXXX	1.06	1.61	2.22
CREU 13432M001	7	XXXXXX	0.83	0.51	4.42
EBRE 13410M001	7	XXXXXX	1.10	1.18	4.32
ELGE 19353S001	7	XXXXXX	0.80	0.49	1.30
EMAZ 17001M001	7	XXXXXX	0.78	1.05	3.41
GERN 19389M001	6	XXXXXX	1.18	1.22	3.50
IGEL 19352S001	7	XXXXXX	0.92	0.63	2.17
ISPS 19484M001	7	XXXXXX	1.08	1.20	3.94
KAST 19499M001	7	XXXXXX	1.09	0.70	2.70
LARE 19440M001	7	XXXXXX	1.70	1.04	2.86
LAZK 19354S001	7	XXXXXX	0.70	1.05	2.39
LEIT 19428M001	7	XXXXXX	1.54	0.94	3.26
ORON 19427M001	7	XXXXXX	0.95	0.76	3.10
PASA 19351S001	7	XXXXXX	0.69	1.07	4.75
RI01 13448M002	7	XXXXXX	0.65	0.89	3.58
SALA 13469M001	7	XXXXXX	1.03	0.52	2.52
SCDA 10088M002	7	XXXXXX	0.82	1.85	1.41
SOPU 19386M001	6	XXXXXX	0.67	1.28	2.86
TERU 13487M001	7	XXXXXX	0.88	0.62	5.06
VITO 19385M001	7	XXXXXX	1.10	1.15	4.50
YEBE 13420M001	7	XXXXXX	0.59	0.82	1.07
ZARA 13462M001	7	XXXXXX	0.85	1.07	3.38

Comparison of individual solutions:

ACOR 13434M001	N	1.10	0.35	0.68	-0.25	0.85	0.05	-0.06	-2.43
ACOR 13434M001	E	0.92	0.15	-0.94	-0.01	1.31	-0.26	-0.74	-1.37
ACOR 13434M001	U	2.78	-1.46	-2.91	3.14	-0.44	-0.99	1.58	4.73
ALDA 19383M001	N	1.85	-1.55	1.52	0.34	2.03	2.43	-2.34	-0.51
ALDA 19383M001	E	0.66	0.50	-1.17	0.23	-0.52	-0.31	0.67	0.30
ALDA 19383M001	U	4.70	5.44	-0.40	-3.10	-8.79	-3.07	1.25	-2.22
ALSA 19419M001	N	1.00	0.54	0.98	0.53	0.89	0.50	-0.29	-1.84
ALSA 19419M001	E	1.00	0.53	-0.88	0.09	-1.32	1.35	-0.54	1.07
ALSA 19419M001	U	2.74	1.95	-1.18	0.20	-5.87	-0.73	-1.54	-1.63
AMUR 19388M001	N	1.29	1.58	-0.21	0.93	1.64	1.48	0.48	-1.18
AMUR 19388M001	E	0.66	-0.17	0.35	0.64	-0.55	0.66	0.24	1.12
AMUR 19388M001	U	4.48	1.79	-1.94	-2.14	-6.18	-2.88	-3.58	-7.05
BIAZ 10074M002	N	0.69	0.23	0.31	0.34	0.53	0.48	-1.03	-1.03
BIAZ 10074M002	E	0.64	-1.06	-0.39	0.25	0.00	0.76	0.75	-0.07
BIAZ 10074M002	U	2.83	1.68	4.71	2.70	-2.14	-1.51	-1.66	-2.45
BIDA 00000M000	N	0.16							
BIDA 00000M000	E	1.19	-1.19						
BIDA 00000M000	U	0.36	0.36						
BRZR 19387M001	N	0.95		-1.88	0.59	0.15	0.67	0.29	-0.23
BRZR 19387M001	E	0.63		0.79	0.42	0.17	0.63	-0.34	0.80
BRZR 19387M001	U	3.70		2.02	-2.83	-0.28	5.61	-1.56	-4.71
CACE 13447M001	N	0.62	-1.03	-0.70	-0.34	-0.28	0.31	0.63	-0.19
CACE 13447M001	E	0.45	0.43	-0.42	-0.54	0.28	0.04	0.64	-0.29
CACE 13447M001	U	3.00	-1.49	5.28	-2.09	0.32	-2.30	-3.03	-2.26
CANT 13438M001	N	0.37	0.32	0.33	-0.03	-0.05	0.40	0.50	-0.42
CANT 13438M001	E	0.34	-0.18	0.24	-0.25	-0.58	-0.22	-0.00	-0.38
CANT 13438M001	U	3.30	4.04	-2.15	1.03	-6.02	-2.36	-1.23	-0.14
CHER 00000M000	N	1.06	-1.40	-0.70	-0.57	0.69	1.69	0.66	-0.44
CHER 00000M000	E	1.61	-2.32	-1.57	0.03	1.81	-0.78	1.30	1.46
CHER 00000M000	U	2.22	1.50	3.89	1.54	-1.64	-0.49	-2.19	-1.45
CREU 13432M001	N	0.83	-0.36	0.76	-0.14	-0.94	0.19	1.47	-0.58
CREU 13432M001	E	0.51	-0.12	0.83	-0.56	-0.39	-0.06	-0.51	0.35
CREU 13432M001	U	4.42	-6.12	0.80	6.00	-2.41	1.86	-1.44	5.66
EBRE 13410M001	N	1.10	-0.41	-0.44	-0.88	1.41	0.17	1.93	-0.57
EBRE 13410M001	E	1.18	2.56	0.13	-0.81	-0.71	0.36	0.07	-0.74
EBRE 13410M001	U	4.32	3.84	2.06	-2.11	-3.84	-5.06	5.23	4.58
ELGE 19353S001	N	0.80	0.71	-0.44	1.19	-0.26	0.79	-0.90	-0.44
ELGE 19353S001	E	0.49	-0.12	-0.12	0.59	-0.40	0.56	0.25	0.72
ELGE 19353S001	U	1.30	-0.56	-0.81	-2.01	1.03	-0.76	1.88	-0.11
EMAZ 17001M001	N	0.78	0.48	-1.28	0.75	0.22	-0.20	0.01	1.08
EMAZ 17001M001	E	1.05	-0.90	1.16	-0.07	-1.12	0.14	-1.74	0.38
EMAZ 17001M001	U	3.41	0.47	-1.48	-1.09	-0.19	-2.16	0.93	-7.79
GERN 19389M001	N	1.18		-0.58	0.59	-1.29	2.06	-0.57	-0.28
GERN 19389M001	E	1.22		0.62	1.07	-0.19	-1.60	1.08	1.47
GERN 19389M001	U	3.50		-0.30	-1.44	2.59	4.51	-3.18	-4.68
IGEL 19352S001	N	0.92	0.73	-0.89	0.64	-0.09	1.52	-0.42	-0.95
IGEL 19352S001	E	0.63	-0.26	-0.50	0.99	-0.17	-0.06	0.05	1.01
IGEL 19352S001	U	2.17	1.86	0.50	-0.16	0.49	-0.38	0.18	-4.90
ISPS 19484M001	N	1.08	0.37	0.33	0.74	1.26	0.84	-1.25	-1.54
ISPS 19484M001	E	1.20	0.20	-0.44	2.45	0.47	-0.54	0.33	-1.31
ISPS 19484M001	U	3.94	-4.20	-0.97	3.14	-5.52	-1.45	5.58	-1.09
KAST 19499M001	N	1.09	2.22	-0.34	-0.18	-0.27	0.86	-1.13	0.14
KAST 19499M001	E	0.70	-0.21	1.29	0.09	-0.16	-0.13	0.80	0.75
KAST 19499M001	U	2.70	1.54	-2.07	-4.36	-1.39	3.63	-0.05	-1.68
LARE 19440M001	N	1.70	-0.98	-2.07	1.44	1.50	-1.31	0.66	2.36
LARE 19440M001	E	1.04	-0.96	0.76	-0.68	-1.87	0.66	0.35	-0.66
LARE 19440M001	U	2.86	1.15	-0.75	-2.55	-2.11	-2.91	2.09	-4.83
LAZK 19354S001	N	0.70	0.84	-0.09	0.13	-0.43	0.79	0.39	-1.13
LAZK 19354S001	E	1.05	-1.44	-1.08	1.30	0.77	0.70	-0.09	0.76
LAZK 19354S001	U	2.39	2.19	-2.76	-0.01	1.12	0.67	0.45	-4.45

LEIT 19428M001	N	1.54	0.40	1.06	0.63	0.87	2.11	-1.48	-2.29
LEIT 19428M001	E	0.94	-0.65	-0.20	1.39	-1.10	0.86	-0.71	0.72
LEIT 19428M001	U	3.26	3.37	-1.69	-2.04	-6.30	-1.94	1.11	-0.84
ORON 19427M001	N	0.95	-0.03	0.25	0.05	0.56	1.79	-1.24	-0.57
ORON 19427M001	E	0.76	-0.34	0.30	0.82	-1.47	0.02	-0.31	0.55
ORON 19427M001	U	3.10	2.33	-1.20	1.79	-2.34	-4.71	-3.08	-3.25
PASA 19351S001	N	0.69	-0.02	-0.06	-0.40	0.45	1.37	-0.77	-0.21
PASA 19351S001	E	1.07	-1.56	1.26	1.36	-0.04	-0.74	0.46	0.42
PASA 19351S001	U	4.75	2.68	5.96	-3.27	1.77	-0.15	-0.57	-8.86
RIO1 13448M002	N	0.65	0.25	-0.18	-0.52	0.16	1.28	-0.53	0.47
RIO1 13448M002	E	0.89	-1.23	0.38	0.73	-0.74	0.86	-1.05	0.44
RIO1 13448M002	U	3.58	3.77	-3.24	-1.24	-2.91	-5.39	2.87	-2.24
SALA 13469M001	N	1.03	1.47	-0.77	-0.58	-0.89	-0.59	-0.27	1.42
SALA 13469M001	E	0.52	-0.48	-0.11	-0.14	0.31	0.70	-0.12	-0.87
SALA 13469M001	U	2.52	-1.99	0.35	0.97	1.46	-1.54	-0.83	5.27
SCDA 10088M002	N	0.82	-0.14	-1.02	-0.42	-0.19	1.41	0.79	-0.41
SCDA 10088M002	E	1.85	-3.07	-1.37	-0.60	1.84	0.53	1.65	1.58
SCDA 10088M002	U	1.41	-1.55	0.65	0.68	2.43	-1.09	-1.13	0.50
SOPU 19386M001	N	0.67		-0.49	1.07	0.10	-0.34	-0.72	0.48
SOPU 19386M001	E	1.28		-2.13	0.79	0.50	0.24	0.26	1.63
SOPU 19386M001	U	2.86		-1.93	-4.35	1.06	2.72	1.18	-2.91
TERU 13487M001	N	0.88	-0.17	-1.32	0.65	0.18	1.18	0.91	-0.45
TERU 13487M001	E	0.62	-0.68	0.19	-0.39	-0.16	-0.53	0.88	-0.76
TERU 13487M001	U	5.06	9.59	-5.43	-1.97	-4.19	1.47	1.18	2.66
VITO 19385M001	N	1.10	1.43	-0.52	0.69	1.28	0.71	-1.50	0.09
VITO 19385M001	E	1.15	-1.65	-0.01	1.42	-0.58	1.07	-0.17	1.30
VITO 19385M001	U	4.50	1.53	-0.92	-2.35	-4.33	-0.02	2.72	-9.31
YEBE 13420M001	N	0.59	-0.76	0.68	-0.67	-0.59	-0.39	0.30	-0.03
YEBE 13420M001	E	0.82	0.23	-0.44	-1.82	-0.44	-0.00	-0.56	-0.01
YEBE 13420M001	U	1.07	-1.65	-1.00	0.49	0.55	0.67	0.51	1.36
ZARA 13462M001	N	0.85	1.47	-0.70	-0.84	0.20	0.83	0.47	-0.08
ZARA 13462M001	E	1.07	-0.26	-0.39	1.33	-1.67	1.28	-0.46	0.52
ZARA 13462M001	U	3.38	2.16	-4.18	-3.79	-2.36	-3.42	2.88	2.58

## 6.2 Datum verification

In this section, the datum verification is shown. A 3 parameter Helmert 3D (3 translations) is computed to the minimally constrained sites.

LOCAL GEODETIC DATUM: IGS14  
RESIDUALS IN LOCAL SYSTEM (NORTH, EAST, UP)

NUM	NAME	FLG	RESIDUALS IN MILLIMETERS		
1	ACOR 13434M001	I W	-2.44	0.41	0.72
2	ALAC 13433M001	I W	1.01	-0.29	-1.47
3	ALBA 13452M001	I W	0.40	-0.34	-1.59
4	ALME 13437M001	I W	-1.75	0.76	2.81
5	BCLN 13412M001	I W	0.33	0.98	0.71
6	BELL 13431M001	I W	-1.08	0.32	-1.77
7	BORR 13480M001	I W	-0.12	-2.01	-2.85
8	BRST 10004M004	I W	-2.25	1.31	-1.52
9	CACE 13447M001	I W	0.82	1.92	1.06
10	CANT 13438M001	I W	-1.48	0.55	-1.37
11	CARG 19412M001	I W	0.14	1.07	-2.32
12	CASC 13909S001	I W	1.86	-2.40	5.10
13	CEU1 13449M002	I W	0.41	0.08	-1.31
14	COBA 13453M001	I W	2.25	0.26	-1.78
15	CREU 13432M001	I W	-0.92	0.54	-3.14
16	EBRE 13410M001	I W	0.76	-0.53	-0.78
17	ESCO 13435M001	I W	2.04	1.31	-5.70
18	FUNC 13911S001	I W	3.64	0.63	0.13
19	GAIA 13902M001	I W	-0.85	0.81	5.10
21	HUEL 13451M001	I W	1.89	-2.98	-3.51
22	IZAN 31309M002	I W	0.42	-0.08	4.22
23	LLIV 13436M001	I W	-0.54	0.92	0.79
24	LPAL 81701M001	I W	-1.38	-0.20	3.95
25	LROC 10023M001	I W	0.72	0.03	-0.39
26	MALA 13443M001	I W	0.49	-2.54	3.44
27	MAS1 31303M002	I W	1.11	-0.06	8.09
29	MELI 19379M001	I W	2.46	-2.06	-3.44
30	PASA 19351S001	I W	-1.71	0.24	-2.10
31	PDEL 31906M004	I W	4.80	0.99	3.87
32	RABT 35001M002	I W	1.37	0.17	-3.76
33	RIO1 13448M002	I W	-1.88	1.09	-3.99
34	SALA 13469M001	I W	0.03	0.31	1.04
35	SCOA 10088M002	I W	-5.84	0.48	-3.87
38	SONS 13446M001	I W	-2.01	-1.45	-2.42
40	VALA 13463M002	I W	-0.80	-0.92	-0.10
41	VALE 13439M001	I W	-1.65	-0.06	-1.29
42	VIGO 13450M001	I W	-0.53	0.41	6.20
43	YEBE 13420M001	I W	0.82	0.23	5.80
44	ZARA 13462M001	I W	0.14	0.08	-0.61
45	ZIMM 14001M004	I W	-0.68	0.01	-1.96
	RMS / COMPONENT		1.87	1.11	3.28
	MEAN		-0.00	-0.00	0.00
	MIN		-5.84	-2.98	-5.70
	MAX		4.80	1.92	8.09

NUMBER OF PARAMETERS : 3  
NUMBER OF COORDINATES : 120  
RMS OF TRANSFORMATION : 2.27 MM

BARYCENTER COORDINATES:

LATITUDE : 39 38 24.91  
LONGITUDE : - 4 55 15.75  
HEIGHT : -43.871 KM

PARAMETERS:

TRANSLATION IN N : -0.00 +- 0.36 MM  
TRANSLATION IN E : 0.00 +- 0.36 MM  
TRANSLATION IN U : 0.00 +- 0.36 MM

### 6.3 Adjustment Statistics

In this section, the summary of the global adjustment and not subnetworks are shown. Also, the Helmert parameters of the combined solution with respect the daily solutions are shown.

```
* STATISTICAL PARAMETER-----VALUE(S)-----
NUMBER OF OBSERVATIONS          16647018
NUMBER OF UNKNOWN               213216
NUMBER OF DEGREES OF FREEDOM    16433802
PHASE MEASUREMENTS SIGMA        0.00100
SAMPLING INTERVAL (SECONDS)      180
VARIANCE FACTOR                  2.266737345004798
```

Helmert Transformation Parameters With Respect to Combined Solution:

Sol	Rms (m)	Translation (m)			Rotation (")			Scale (ppm)
		X	Y	Z	X	Y	Z	
1	0.00306	-0.0011	-0.0332	0.0059	0.0007	-0.0002	-0.0008	-0.00081
2	0.00257	-0.0135	0.0115	0.0107	-0.0003	-0.0005	0.0002	0.00066
3	0.00190	0.0055	0.0075	-0.0053	-0.0000	0.0002	0.0003	-0.00004
4	0.00233	-0.0107	0.0062	0.0138	-0.0001	-0.0006	0.0001	0.00000
5	0.00231	-0.0002	-0.0108	-0.0016	0.0002	0.0001	-0.0003	0.00002
6	0.00204	0.0005	0.0037	-0.0028	-0.0000	0.0001	0.0001	0.00031
7	0.00221	0.0206	0.0094	-0.0084	-0.0002	0.0006	0.0003	-0.00141

Statistics of individual solutions:

File	RMS (m)	DOF	Chi**2/DOF	#Observations authentic / pseudo	#Parameters explicit / implicit / singular
1	0.00164	2348160	2.70	2379362	3 942 30263 0
2	0.00150	2388079	2.25	2419251	3 954 30221 0
3	0.00144	2401384	2.06	2430821	3 951 28489 0
4	0.00147	2322083	2.15	2353584	3 951 30553 0
5	0.00151	2325000	2.29	2357239	3 954 31288 0
6	0.00148	2301560	2.18	2332987	3 954 30476 0
7	0.00147	2341857	2.17	2373774	3 957 30963 0

## 7 Equipment

### 7.1 Receiver List

Serial numbers not shown.

```
*SITE PT SOLN T DATA_START__ DATA_END____ DESCRIPTION_____ S/N__ FIRMWARE____
ACOR A 1 P 19:223:00000 19:229:86370 LEICA GR10 -----
ALDA A 1 P 19:223:00000 19:229:86370 LEICA GR10 -----
ALSA A 1 P 19:223:00000 19:229:86370 LEICA GR50 -----
AMUR A 1 P 19:223:00000 19:229:86370 LEICA GR10 -----
BIAZ A 1 P 19:223:00000 19:229:86370 TRI SP90M -----
BIDA A 1 P 19:223:00000 19:223:86370 LEICA GR10 -----
BRZR A 1 P 19:224:28800 19:229:86370 LEICA GR30 -----
CACE A 1 P 19:223:00000 19:229:86370 TRIMBLE NETR9 -----
CANT A 1 P 19:223:00000 19:229:86370 LEICA GR10 -----
CHER A 1 P 19:223:00000 19:229:86370 LEICA GRX1200+GNSS -----
CREU A 1 P 19:223:00000 19:229:86370 LEICA GR50 -----
EBRE A 1 P 19:223:00000 19:229:86370 LEICA GR50 -----
ELGE A 1 P 19:223:00000 19:229:86370 LEICA GR30 -----
EMAZ A 1 P 19:223:00000 19:229:86370 LEICA GR30 -----
GERN A 1 P 19:224:00000 19:229:86370 LEICA GR30 -----
IGEL A 1 P 19:223:00000 19:229:86370 LEICA GR30 -----
ISPS A 1 P 19:223:00000 19:229:86370 TRIMBLE NETR9 -----
KAST A 1 P 19:223:00000 19:229:86370 LEICA GR30 -----
LARE A 1 P 19:223:00000 19:229:86370 LEICA GRX1200GGPRO -----
LAZK A 1 P 19:223:00000 19:229:86370 LEICA GR30 -----
LEIT A 1 P 19:223:00000 19:229:86370 LEICA GR50 -----
ORON A 1 P 19:223:00000 19:229:86370 LEICA GR50 -----
PASA A 1 P 19:223:00000 19:229:86370 LEICA GR30 -----
RIO1 A 1 P 19:223:00000 19:229:86370 LEICA GR25 -----
SALA A 1 P 19:223:00000 19:229:86370 LEICA GRX1200+GNSS -----
SCOA A 1 P 19:223:00000 19:229:86370 LEICA GR25 -----
SOPU A 1 P 19:224:07200 19:229:86370 LEICA GR30 -----
TERU A 1 P 19:223:00000 19:229:86370 LEICA GRX1200GGPRO -----
VITO A 1 P 19:223:00000 19:229:86370 LEICA GR10 -----
YEBE A 1 P 19:223:00000 19:229:86370 TRIMBLE NETR9 -----
ZARA A 1 P 19:223:00000 19:229:86370 TRIMBLE NETR9 -----
```

### 7.2 Antennas

Serial number ONLY provided in case individual calibrations are available.

```
*SITE PT SOLN T DATA_START__ DATA_END____ DESCRIPTION_____ S/N__
ACOR A 1 P 19:223:00000 19:229:86370 LEIAT504 LEIS -----
ALDA A 1 P 19:223:00000 19:229:86370 LEIAS10 NONE -----
ALSA A 1 P 19:223:00000 19:229:86370 LEIAS10 NONE -----
AMUR A 1 P 19:223:00000 19:229:86370 LEIAS10 NONE -----
BIAZ A 1 P 19:223:00000 19:229:86370 LEIAR25 LEIT -----
```

```

BIDA A 1 P 19:223:00000 19:223:86370 LEIAS10 NONE -----
BRZR A 1 P 19:224:28800 19:229:86370 LEIAS10 NONE -----
CACE A 1 P 19:223:00000 19:229:86370 TRM29659.00 NONE -----
CANT A 1 P 19:223:00000 19:229:86370 LEIAR25.R4 LEIT 25066
CHER A 1 P 19:223:00000 19:229:86370 LEIAX1203+GNSS NONE -----
CREU A 1 P 19:223:00000 19:229:86370 LEIAR25.R4 NONE 26357
EBRE A 1 P 19:223:00000 19:229:86370 LEIAR25.R4 NONE 26359
ELGE A 1 P 19:223:00000 19:229:86370 LEIAR25.R4 LEIT -----
EMAZ A 1 P 19:223:00000 19:229:86370 LEIAS10 NONE -----
GERN A 1 P 19:224:00000 19:229:86370 LEIAS10 NONE -----
IGEL A 1 P 19:223:00000 19:229:86370 LEIAR20 LEIM -----
ISPS A 1 P 19:223:00000 19:229:86370 TRM59900.00 SCIS -----
KAST A 1 P 19:223:00000 19:229:86370 LEIAS10 NONE -----
LARE A 1 P 19:223:00000 19:229:86370 LEIAT504 NONE -----
LAZK A 1 P 19:223:00000 19:229:86370 LEIAR25.R4 LEIT -----
LEIT A 1 P 19:223:00000 19:229:86370 LEIAR10 NONE -----
ORDN A 1 P 19:223:00000 19:229:86370 LEIAR10 NONE -----
PASA A 1 P 19:223:00000 19:229:86370 LEIAR20 LEIM 73034
RID1 A 1 P 19:223:00000 19:229:86370 LEIAR25.R4 LEIT 25138
SALA A 1 P 19:223:00000 19:229:86370 LEIAR25 NONE -----
SCDA A 1 P 19:223:00000 19:229:86370 TRM55971.00 NONE -----
SOPU A 1 P 19:224:07200 19:229:86370 LEIAS10 NONE -----
TERU A 1 P 19:223:00000 19:229:86370 LEIAT504GG LEIS -----
VITO A 1 P 19:223:00000 19:229:86370 LEIAS10 NONE -----
YEBE A 1 P 19:223:00000 19:229:86370 TRM29659.00 NONE -----
ZARA A 1 P 19:223:00000 19:229:86370 TRM29659.00 NONE -----

```

### 7.3 Eccentricities

```

*
*SITE PT SOLN T DATA_START_ DATA_END_ AXE ARP->BENCHMARK(M)
UP----- NORTH--- EAST-----
ACOR A 1 P 19:223:00000 19:229:86370 UNE 3.0460 0.0000 0.0000
ALDA A 1 P 19:223:00000 19:229:86370 UNE 0.0000 0.0000 0.0000
ALSA A 1 P 19:223:00000 19:229:86370 UNE 0.0000 0.0000 0.0000
AMUR A 1 P 19:223:00000 19:229:86370 UNE 0.0000 0.0000 0.0000
BIAZ A 1 P 19:223:00000 19:229:86370 UNE 0.0000 0.0000 0.0000
BIDA A 1 P 19:223:00000 19:223:86370 UNE 0.0000 0.0000 0.0000
BRZR A 1 P 19:224:28800 19:229:86370 UNE 0.0771 0.0000 0.0000
CACE A 1 P 19:223:00000 19:229:86370 UNE 0.0600 0.0000 0.0000
CANT A 1 P 19:223:00000 19:229:86370 UNE 3.0490 0.0000 0.0000
CHER A 1 P 19:223:00000 19:229:86370 UNE 0.0000 0.0000 0.0000
CREU A 1 P 19:223:00000 19:229:86370 UNE 0.0770 0.0000 0.0000
EBRE A 1 P 19:223:00000 19:229:86370 UNE 0.0770 0.0000 0.0000
ELGE A 1 P 19:223:00000 19:229:86370 UNE 0.0000 0.0000 0.0000
EMAZ A 1 P 19:223:00000 19:229:86370 UNE 0.0350 0.0000 0.0000
GERN A 1 P 19:224:00000 19:229:86370 UNE 0.0771 0.0000 0.0000
IGEL A 1 P 19:223:00000 19:229:86370 UNE 0.0000 0.0000 0.0000
ISPS A 1 P 19:223:00000 19:229:86370 UNE 0.0350 0.0000 0.0000
KAST A 1 P 19:223:00000 19:229:86370 UNE 0.0350 0.0000 0.0000
LARE A 1 P 19:223:00000 19:229:86370 UNE 0.0000 0.0000 0.0000
LAZK A 1 P 19:223:00000 19:229:86370 UNE 0.0000 0.0000 0.0000
LEIT A 1 P 19:223:00000 19:229:86370 UNE 0.0000 0.0000 0.0000
ORDN A 1 P 19:223:00000 19:229:86370 UNE 0.0000 0.0000 0.0000
PASA A 1 P 19:223:00000 19:229:86370 UNE 0.0000 0.0000 0.0000
RID1 A 1 P 19:223:00000 19:229:86370 UNE 0.0606 0.0000 0.0000
SALA A 1 P 19:223:00000 19:229:86370 UNE 0.0600 0.0000 0.0000
SCDA A 1 P 19:223:00000 19:229:86370 UNE 0.0000 0.0000 0.0000
SOPU A 1 P 19:224:07200 19:229:86370 UNE 0.0771 0.0000 0.0000
TERU A 1 P 19:223:00000 19:229:86370 UNE 0.0600 0.0000 0.0000
VITO A 1 P 19:223:00000 19:229:86370 UNE 0.0000 0.0000 0.0000
YEBE A 1 P 19:223:00000 19:229:86370 UNE 0.0000 0.0000 0.0000
ZARA A 1 P 19:223:00000 19:229:86370 UNE 3.2590 0.0000 0.0000

```

## 8 References

C. Boucher and Z. Altamimi (2011): *Specifications for reference frame fixing in the analysis of a EUREF GPS campaign*. [etrs89.ensg.ign.fr/memo-V8.pdf](http://etrs89.ensg.ign.fr/memo-V8.pdf)

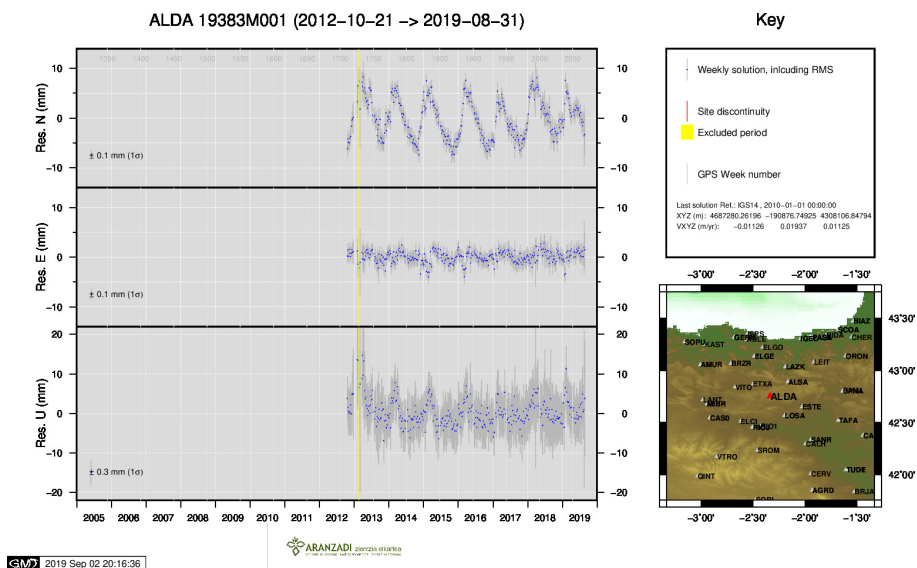
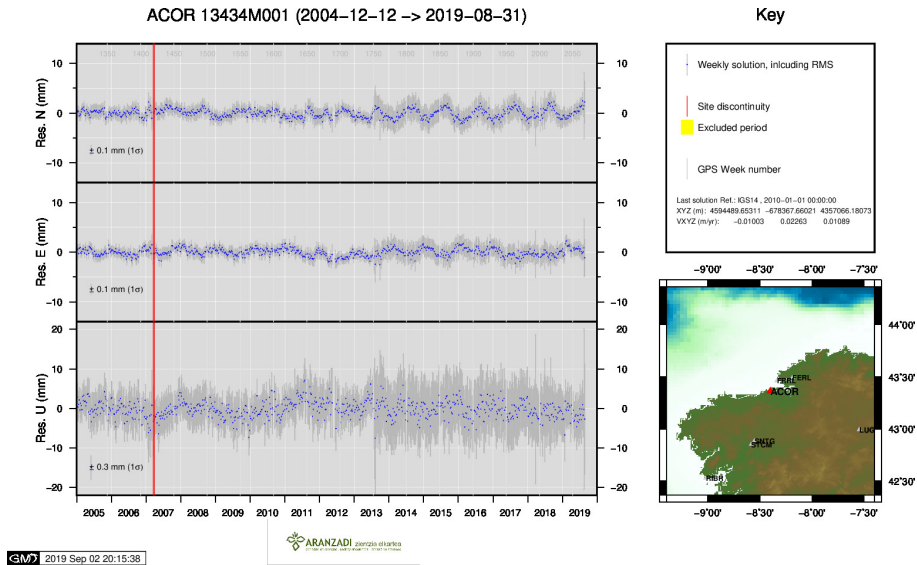
EPN Coordination Group and the EPN Central Bureau (2018): *Guidelines for the EPN Analysis Centres*. [epncb.oma.be/documentation/guidelines/guidelines\\_analysis\\_centres.pdf](http://epncb.oma.be/documentation/guidelines/guidelines_analysis_centres.pdf)

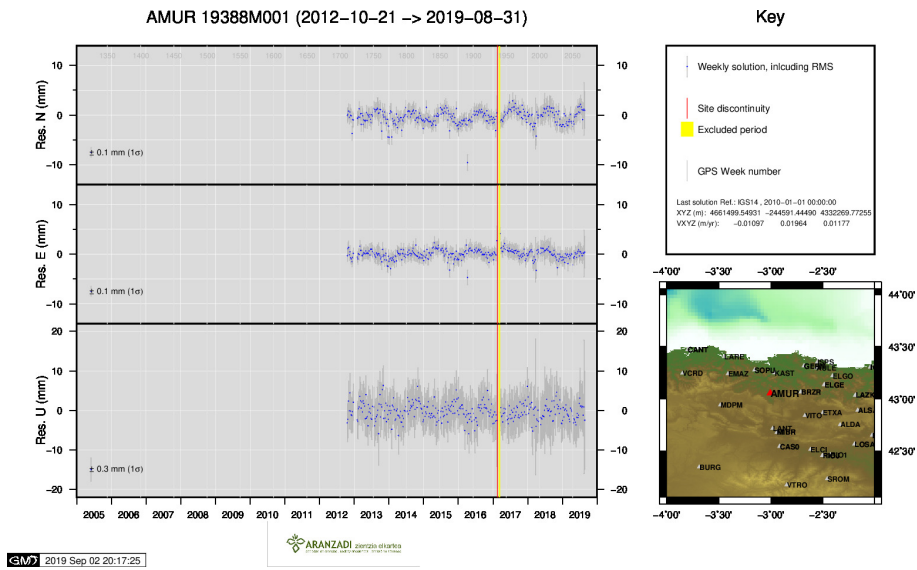
Z. Altamimi (2018): *EUREF Technical Note 1: Relationship and Transformation between the International and the European Terrestrial Reference Systems*. [etrs89.ensg.ign.fr/pub/EUREF-TN-1.pdf](http://etrs89.ensg.ign.fr/pub/EUREF-TN-1.pdf)



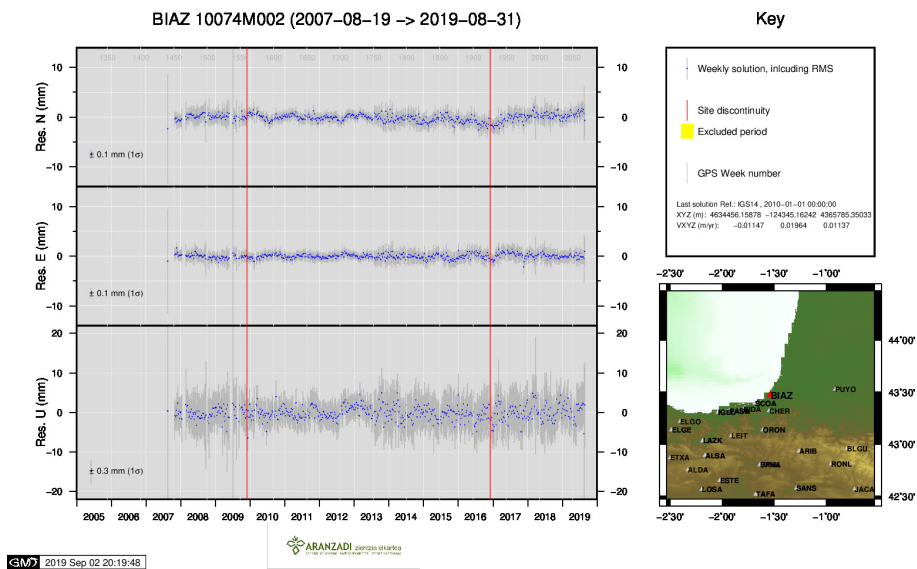
## 9 Cumulative Time Series

Time series of stations. Latest plots at: <http://geolabpasaia.org/gnss/ARA-net/TSeries/>, or click on the caption of each image.

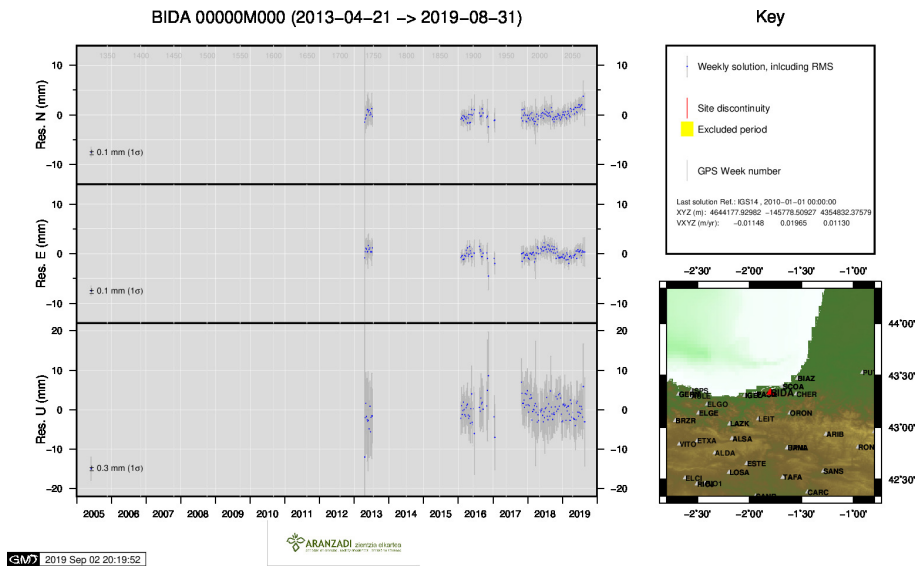




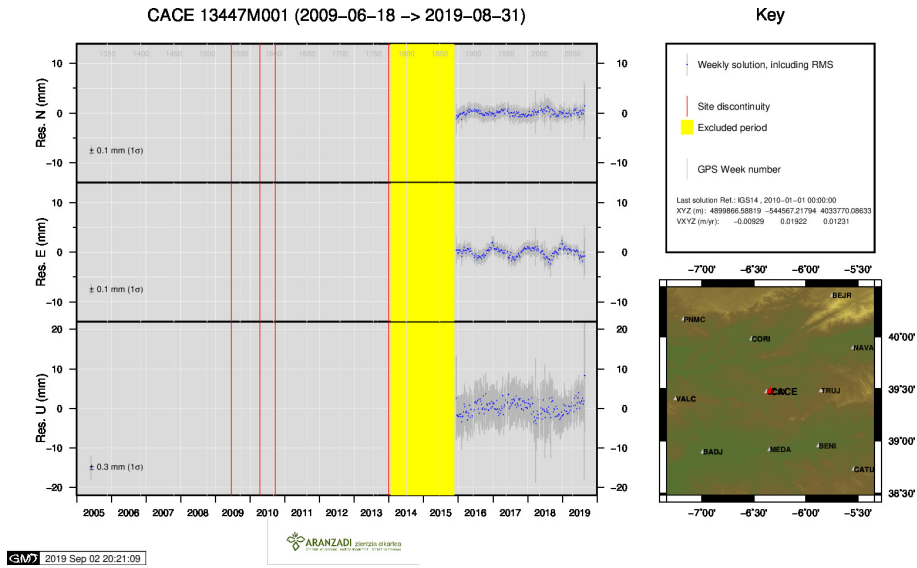
3 ) AMUR



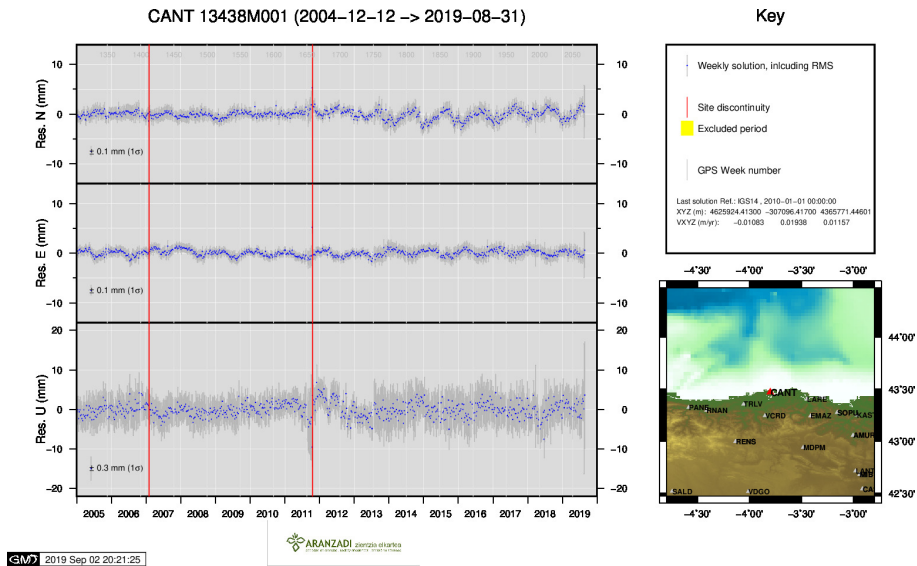
4 ) BLAZ



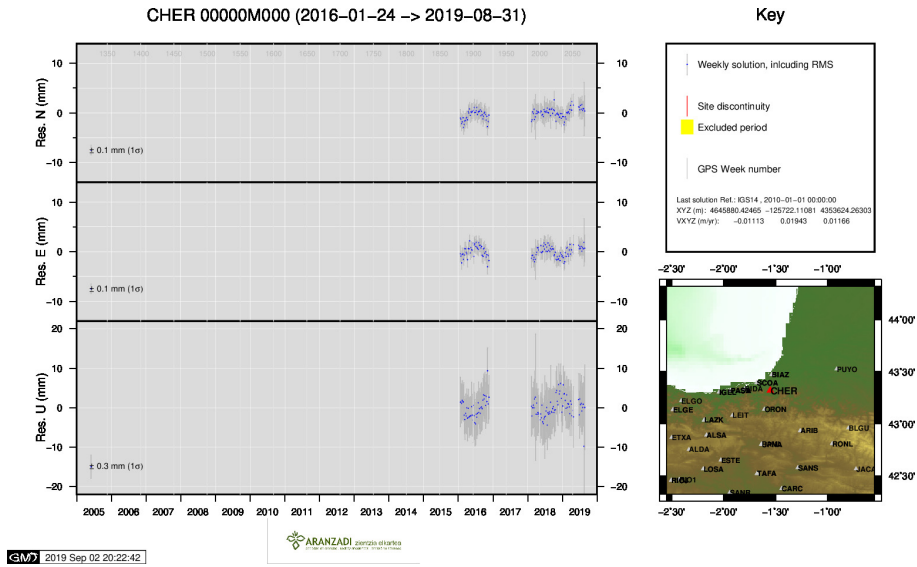
5 ) BIDA



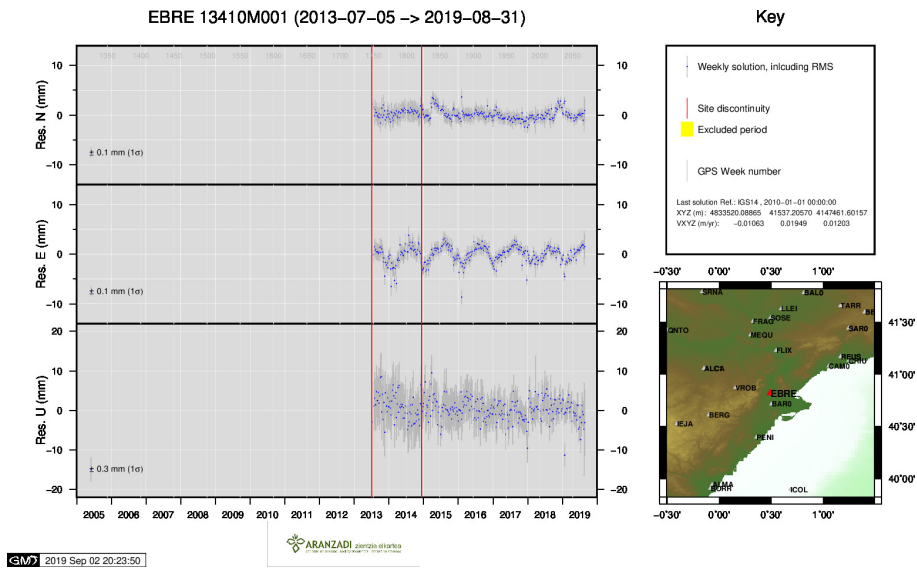
6 ) CACE



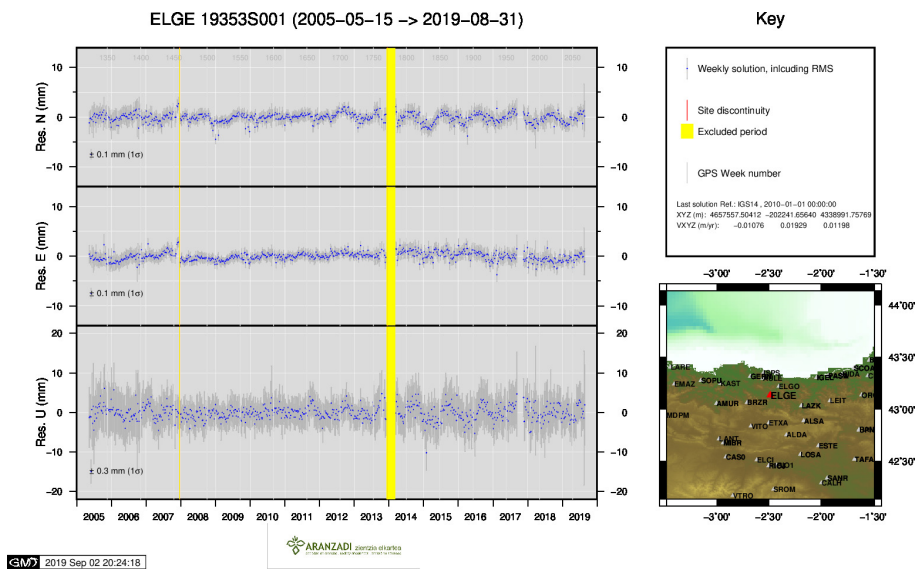
7 ) CANT



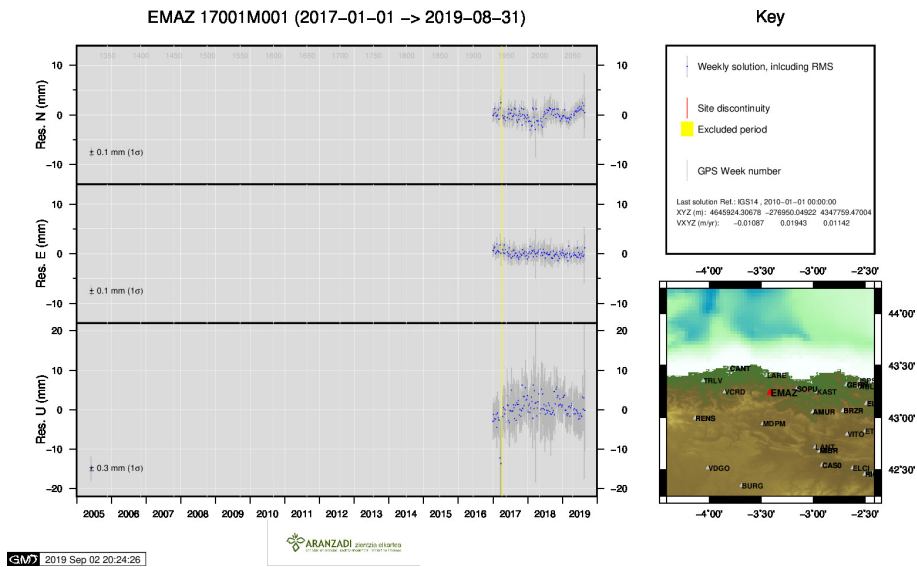
8 ) CHER



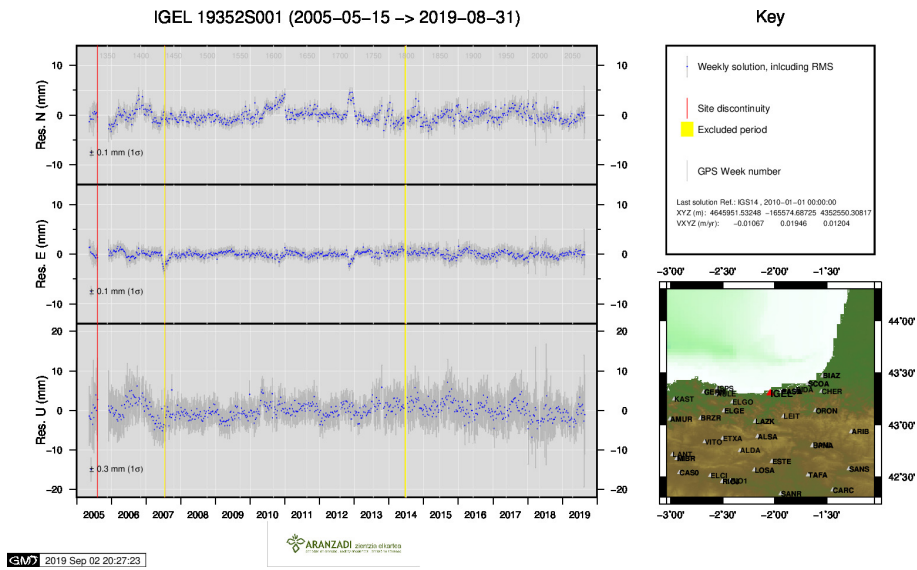
9 ) EBRE



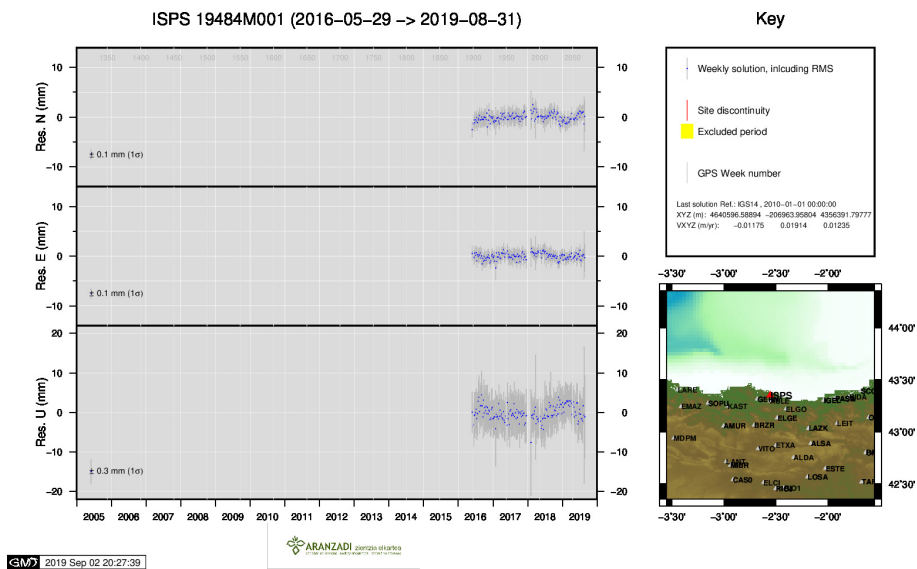
10 ) ELGE



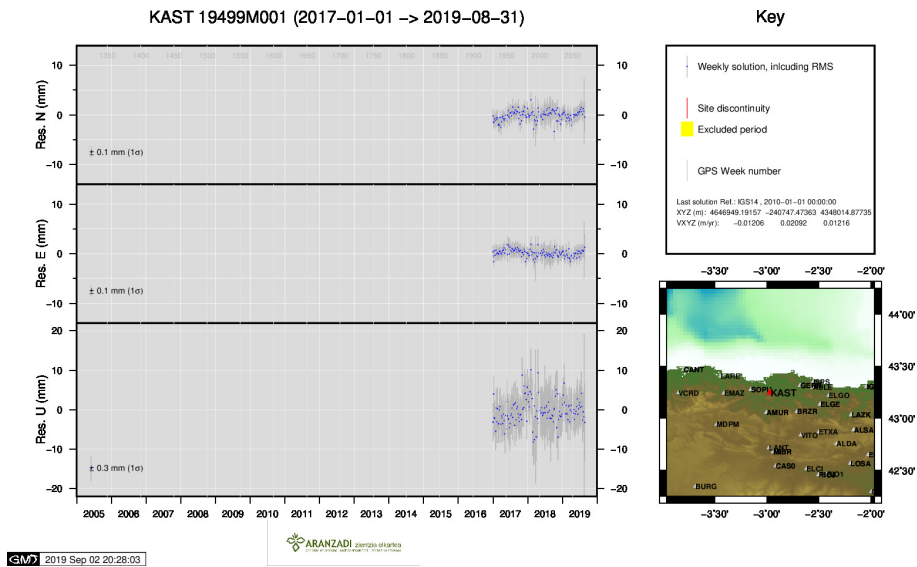
11 ) EMAZ



12 ) IGEL

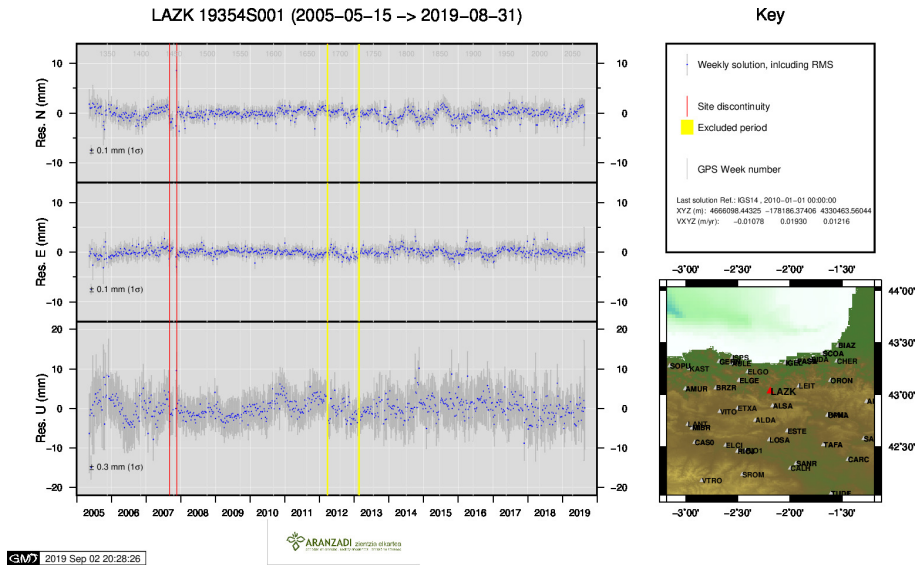


13 ) ISPS

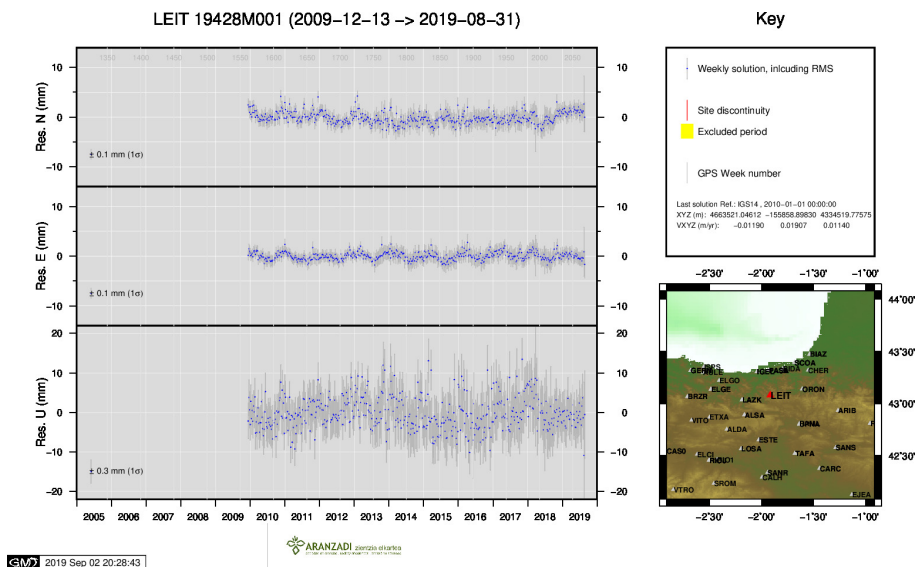


14 ) KAST

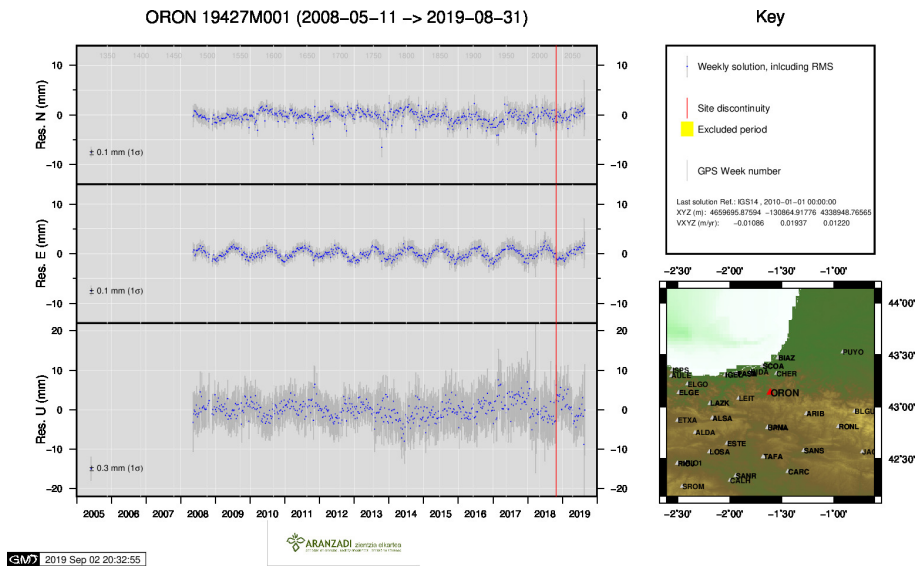




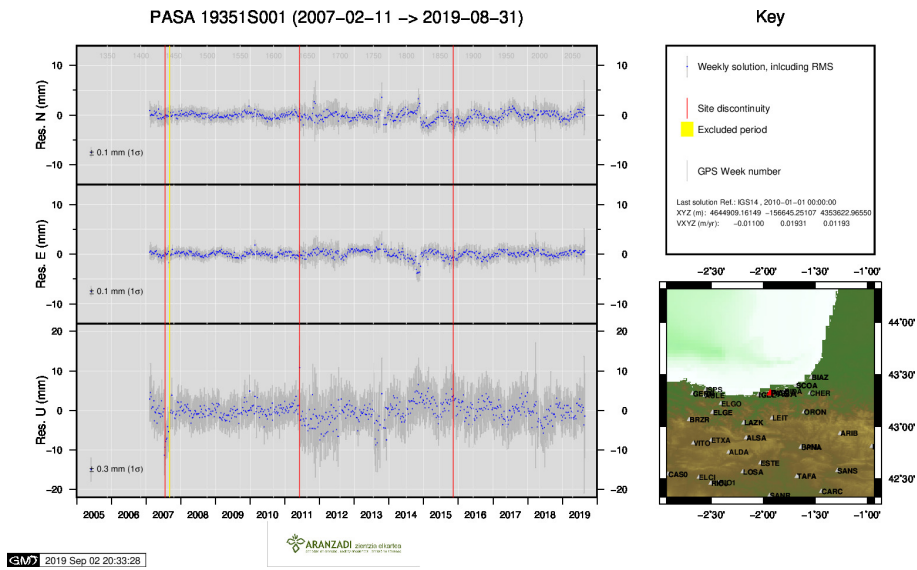
15 ) LAZK



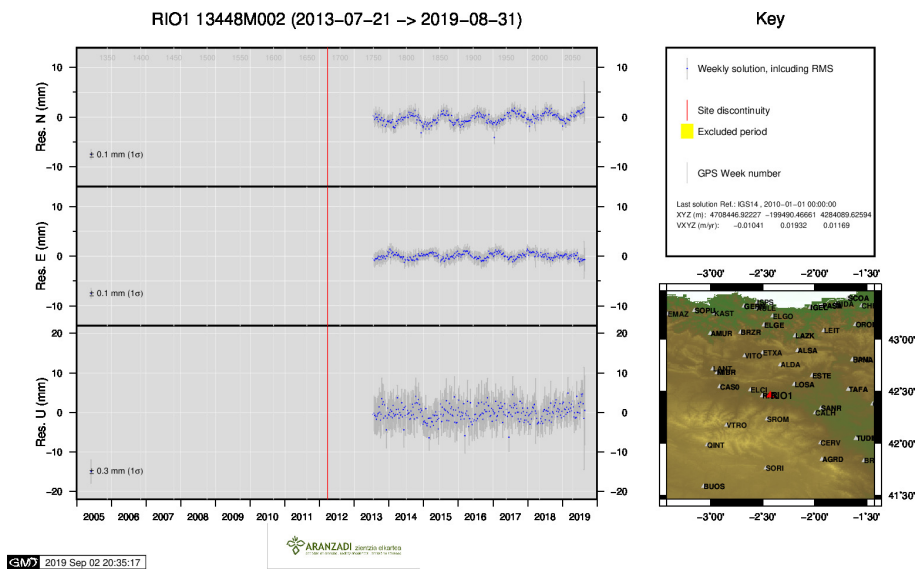
16 ) LEIT



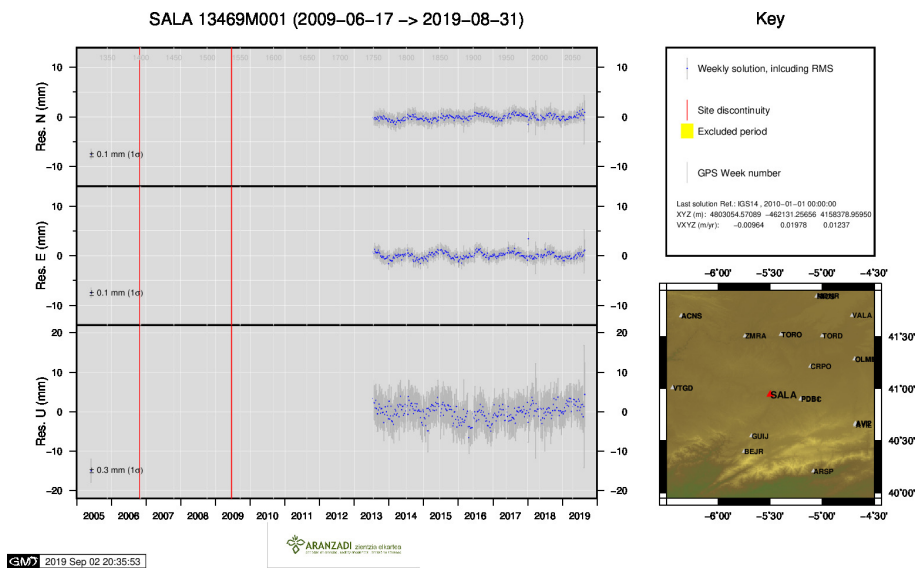
17 ) ORON



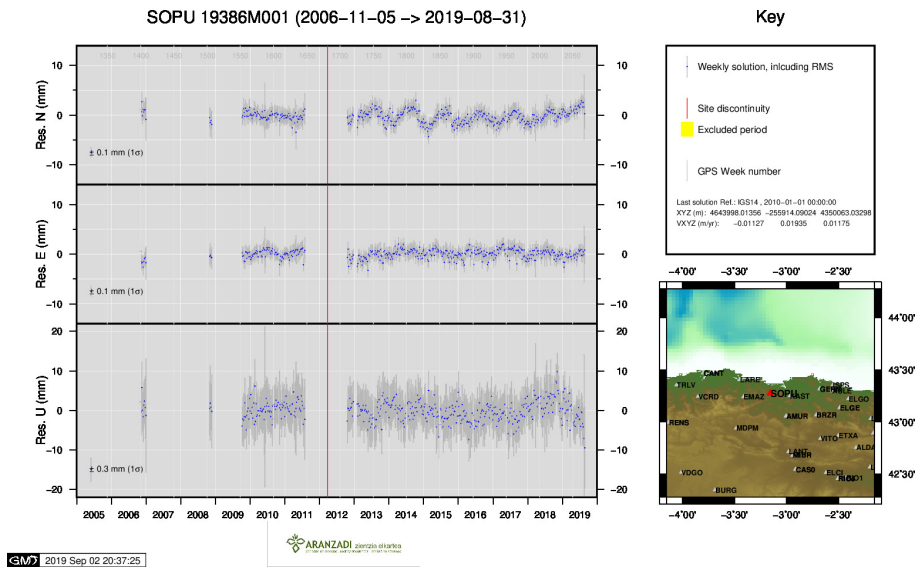
18 ) PASA



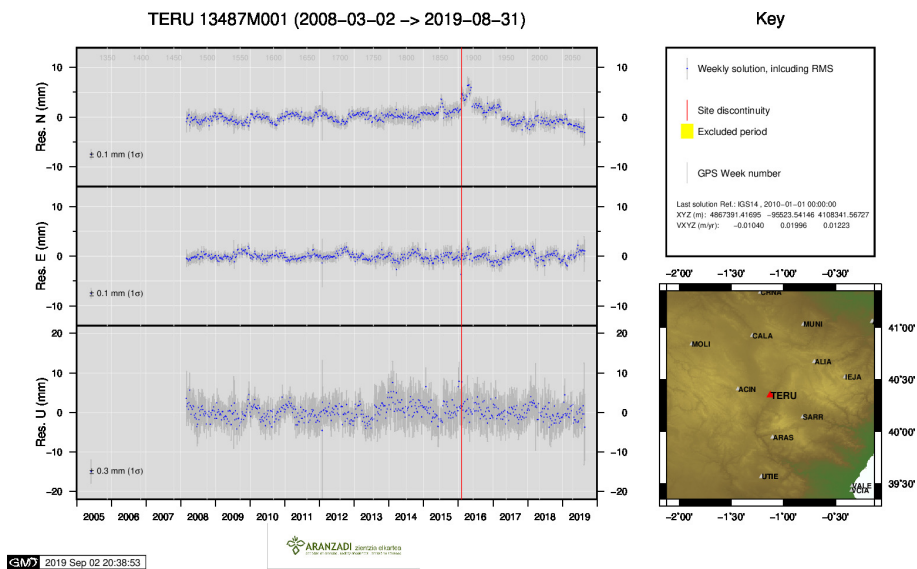
19 ) RIO1



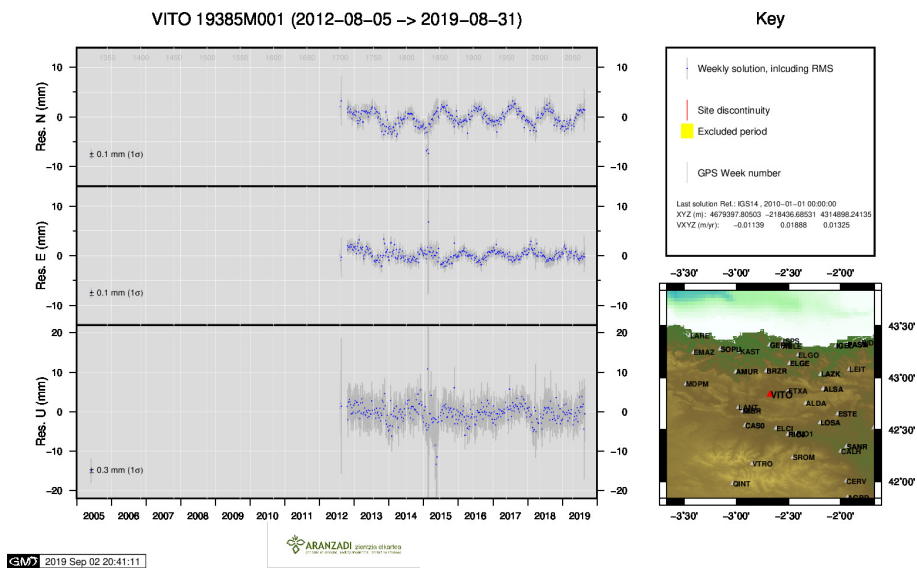
20 ) SALA



21 ) SOPU

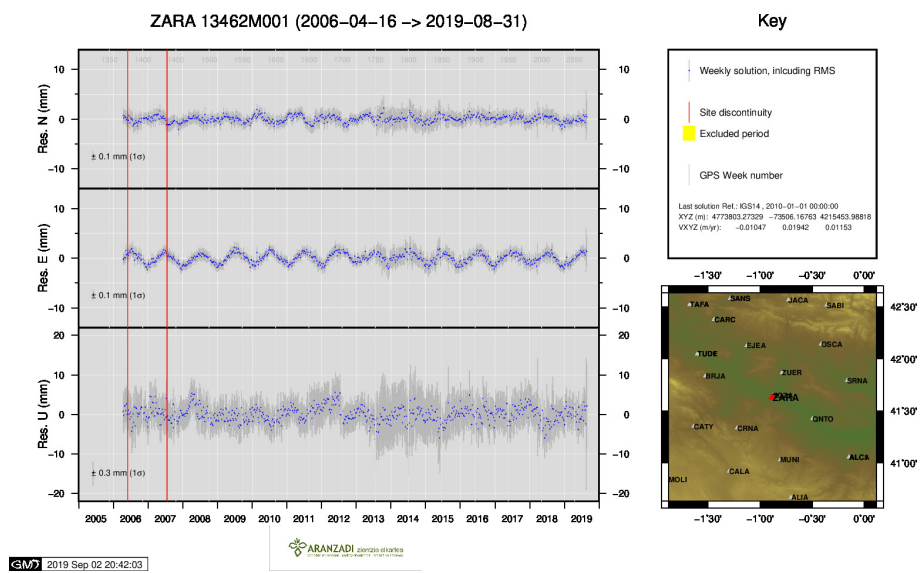


22 ) TERU



23 ) VITO





24 ) ZARA