

ARA-DAC Weekly Analysis Result: 2060 (GFA)

Technical Report

GPS Week: 2060 (GFA)

<http://geolabpasaia.org/gnss/ARA-euref/>

ARA-DAC details:

Contact person: J. Zurutuza

Contact mail: geodesia@aranzadi.eus

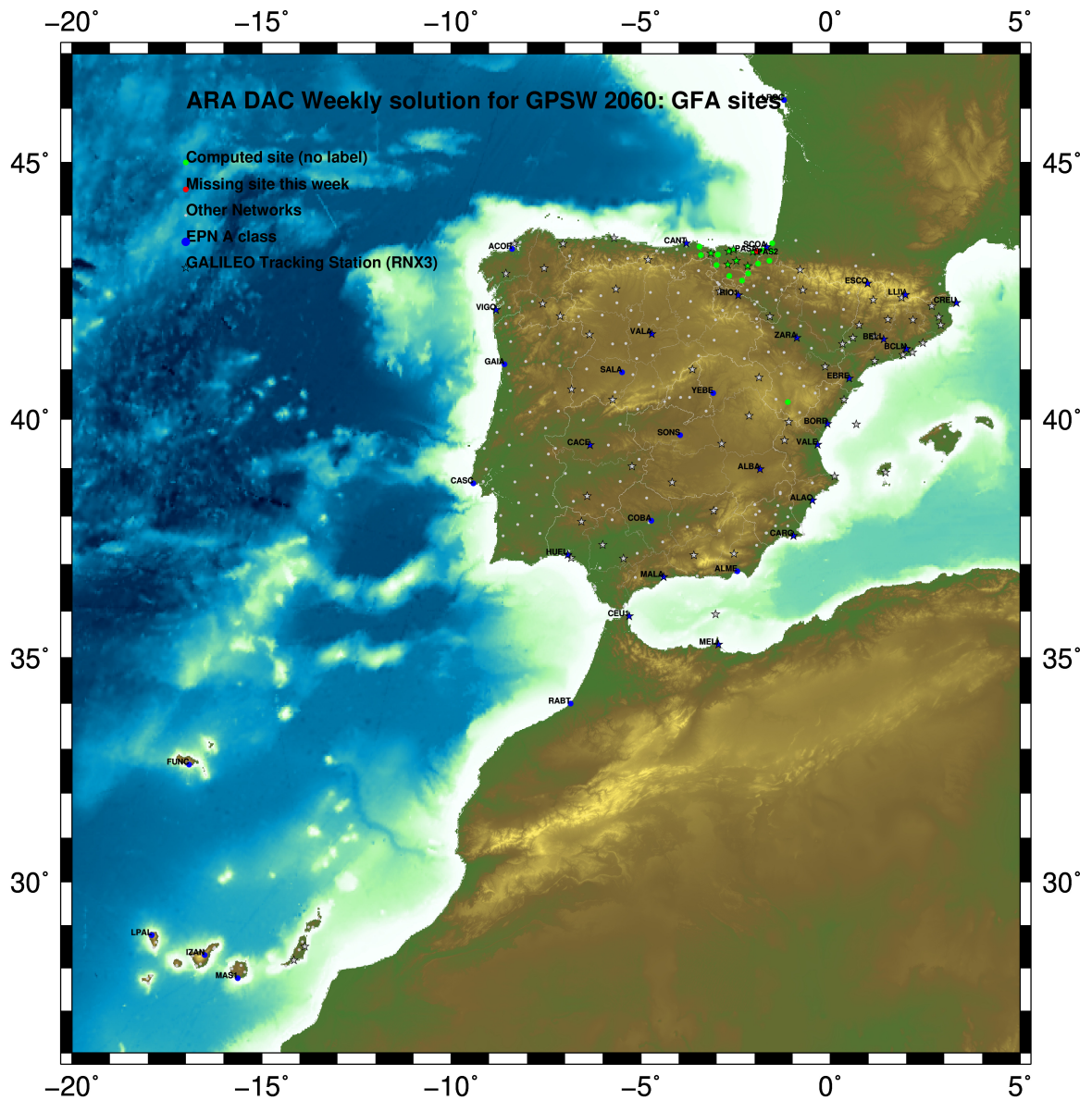
Report generated on 2019/07/22 at 23:07:14



1 Introduction

In may 2015 ARA (EUREF's acronym of the ARANZADI's Department of Applied Geodesy), kicks off as a EUREF's Operational Center. In July 2015, the Densification solutions ARA computes routinely in a weekly basis start being submitted to the EUREF's EPN Densification Project.

2 Map of Computed Sites



GM 2019 Jul 22 23:07:05

Fig.1: Computed Sites for GPS Week2060 (GFA)

3 Main Computation Parameters

The main parameters considered in the ARA analysis follow strictly the EPN recommendations.

- Preprocessing: Independent baselines are defined by the criterion of maximum common observations. Cycle slips are fixed with the MAUPRP program, analysing triple phase differences for each independent baseline. If MAUPRP does not fix all slips for one station, that station is edited out.
- Basic Observable : Carrier phase, L_1 and L_2 ; a priori sigma of single differences:0.002 m.
 - sampling (for ambiguity resolution) : 30 s
 - sampling (for final processing) : 180 s
 - Systems: GPS+GLONASS observations are used (Galileo also used if available from GPSW 1986 on)
- Modelled observable: Double differences of carrier phase using different combinations based on the distance.
- Ground antenna phase center calibrations: Group APCV used from the PCV_COD.I14 file and individual calibrations from EPNC_14.ATX. EPN_A class sites (CRD + VEL) IGS14 used to define the reference frame (from GPSW 1934). If individual calibrations, other from these, are available, they are also included in the analysis.
- Troposphere:
 - 3 deg elev. cutoff; elevation dependent weighting
 - VMF1 mapping function. ZPD parameters are estimated using the VMF1 mapping function.
 - CHENHER gradient estimation model.
- Ionosphere: no a priori model, ionospheric effect almost removed by iono free combination.
- Ocean Loading: FES2004 (Scherneck).
- Atmosph. Loading: computed from a global grid using the GRDS1S2 program of Bernese 5.2.

4 Estimated Parameters

- Adjustment: Least Squares
- Rejection Criteria: 3*rms of single differences, in the weekly combination of daily normal equations (ADDNEQ)
- Station coordinates: minimum constraints (MC) to EPN A class sites (only translations).
- Troposphere: 3 deg. After having obtained coordinates valid for the entire week, tropospheric zenith delay is solved at each site at intervals of 1 hour throughout the week, holding the coordinates constrained at the weekly values.
- Ionospheric: second and third "High Order Ionosphere (HOI)" corrections used, using CODE files, to improve Ambiguity Resolution.
- Satellite clock bias: not estimated because are eliminated by double differencing the phase data.
- Receiver clock bias: not estimated because are eliminated by double differencing the phase data.
- Orbits and ERPs: CODE's orbits and ERP for both rapid and final solutions. DE405 planetary ephemeris and JGM3 Earth geopotential model is used.
- Tidal displacements: according to IERS2010 Conventions. Atmospheric loading corrections used.

- Ambiguity: an advanced ambiguity resolution (AR) scheme is included:
 - Code-Based Widelane (WL) AR for baselines shorter than 6000km, a Melbourne-Wuebbena wide-lane and narrow-lane AR is computed.
 - Phase-Based Widelane (L_5) AR for baselines shorter than 200km, the code-based wide-lane AR is replaced by a phase-only wide-lane with a subsequent narrow-lane AR.
 - Quasi-Ionosphere-Free (QIF)AR for the remaining real-valued ambiguities for baselines shorter than 2000km.
 - Direct L_1/L_2 AR for baselines shorter than 20km
- AR Verification: Each baseline is processed by introducing the resolved integer ambiguities and checking the residuals. If there is any problem, the ambiguities are re-initialized.

5 Computed Coordinates

In this section the adjusted coordinates are summarized. Note that the sites with an A flag are the computed ones, whereas sites flagged as W are the ones used in the Minimal Constraints condition.

5.1 IGS14

The Reference Frame considered in this section is IGS14, release C2010.

ARA LAC 2060 WEEK FINAL COMBINATION: PRECISE ORBITS 22-JUL-19 19:52

LOCAL GEODETIC DATUM: IGS14 EPOCH: 2019-07-03 12:00:00

NUM	STATION NAME	X (M)	Y (M)	Z (M)	FLAG
1	ACOR 13434M001	4594489.55637	-678367.44470	4357066.28427	W
33	ALDA 19383M001	4687280.15647	-190876.56488	4308106.95812	A
42	ALSA 19419M001	4677250.83132	-176770.39247	4319079.87818	A
44	AMUR 19388M001	4661499.44892	-244591.25918	4332269.88856	A
78	BLAZ 10074M002	4634456.05037	-124344.97690	4365785.46098	A
79	BIDA 00000M000	4644177.81966	-145778.32263	4354832.48590	A
89	BRZR 19387M001	4662220.99353	-220769.89778	4333309.44890	A
9	CACE 13447M001	4899866.50241	-544567.03728	4033770.20532	W
10	CANT 13438M001	4625924.30876	-307096.23323	4365771.55738	W
114	CHER 00000M000	4645880.31760	-125721.92597	4353624.37519	A
15	CREU 13432M001	4715420.12715	273178.06000	4271946.84253	W
16	EBRE 13410M001	4833519.98517	41537.39121	4147461.71475	W
135	ELGE 19353S001	4657557.40456	-202241.47385	4338991.87581	A
137	EMAZ 17001M001	4645924.20196	-276949.86527	4347759.58037	A
157	GERN 19389M001	4642811.31655	-217222.92479	4353278.88586	A
177	IGEL 19352S001	4645951.42846	-165574.50322	4352550.42325	A
182	ISPS 19484M001	4640596.47709	-206963.77665	4356391.31747	A
187	KAST 19499M001	4646949.07819	-240747.27597	4348014.98592	A
192	LARE 19440M001	4632831.94750	-279026.13890	4360314.42870	A
193	LAZK 19354S001	4666098.34127	-178186.19070	4330463.67934	A
197	LEIT 19428M001	4663520.93498	-155858.71810	4334519.88809	A
253	ORON 19427M001	4659695.77344	-130864.73282	4338948.88400	A
30	PASA 19351S001	4644909.05790	-156645.06768	4353623.08223	W
33	RID1 13448M002	4708446.82461	-199490.28460	4284089.74042	W
34	SALA 13469M001	4803054.48177	-462131.06869	4158379.08093	W
35	SCDA 10088M002	4639940.49571	-136224.93975	4359552.41675	W
313	SOPU 19386M001	4643997.90456	-255913.90604	4350063.14594	A
333	TERU 13487M001	4867391.32086	-95523.35202	4108341.68411	A
366	VITO 19385M001	4679397.69937	-218436.50744	4314898.37240	A
43	YEBE 13420M001	4848724.56576	-261631.92889	4123094.33090	W
44	ZARA 13462M001	4773803.16423	-73505.98226	4215454.09688	W

5.2 ETRF2000 (ETRS89) Coordinates

European Terrestrial Reference System, 1989 (ETRS89) is realized by ETRF2000 (Boucher and Altamimi, 2011) and (Altamimi, 2017).

ETRF2000 FINAL COORD. wk 2060 22-JUL-19 19:52

LOCAL GEODETIC DATUM: ETRF2000 EPOCH: 2019-07-03 12:00:00

NUM	STATION NAME	X (M)	Y (M)	Z (M)	FLAG
1	ACOR 13434M001	4594489.86376	-678367.98410	4357065.86649	W
33	ALDA 19383M001	4687280.51773	-190877.11289	4308106.53929	A
42	ALSA 19419M001	4677251.19499	-176770.93939	4319079.46029	A
44	AMUR 19388M001	4661499.80255	-244591.80465	4332269.47104	A
78	BLAZ 10074M002	4634456.42342	-124345.51919	4365785.04698	A
79	BIDA 00000M000	4644178.18944	-145778.86600	4354832.07090	A
89	BRZR 19387M001	4662221.35303	-220770.44326	4333309.03162	A
9	CACE 13447M001	4899866.80309	-544567.60812	4033769.76591	W
10	CANT 13438M001	4625924.66037	-307096.77515	4365771.14180	W
114	CHER 00000M000	4645880.68965	-125722.46946	4353623.96030	A
15	CREU 13432M001	4715420.54024	273177.51072	4271946.42710	W
16	EBRE 13410M001	4833520.36251	41536.82879	4147461.28756	W
135	ELGE 19353S001	4657557.76662	-202242.01879	4338991.45911	A
137	EMAZ 17001M001	4645924.55587	-276950.40921	4347759.16364	A
157	GERN 19389M001	4642811.67784	-217223.46823	4353278.47009	A
177	IGEL 19352S001	4645951.79576	-165575.04684	4352550.00787	A
182	ISPS 19484M001	4640596.83980	-206964.31983	4356391.50200	A
187	KAST 19499M001	4646949.43636	-240747.81991	4348014.57955	A
192	LARE 19440M001	4632832.30203	-279026.68146	4360314.01294	A
193	LAZK 19354S001	4666098.70556	-178186.73646	4330463.26228	A
197	LEIT 19428M001	4663521.30217	-155859.26353	4334519.47149	A
253	ORON 19427M001	4659696.14387	-130865.27777	4338948.46800	A
30	PASA 19351S001	4644909.42632	-156645.61116	4353622.66704	W
33	RID1 13448M002	4708447.18319	-199490.83483	4284089.31987	W
34	SALA 13469M001	4803054.80080	-462131.62940	4158378.64995	W
35	SCDA 10088M002	4639940.86693	-136225.48265	4359552.00218	W
313	SOPU 19386M001	4643998.26109	-255914.44971	4350062.72961	A
333	TERU 13487M001	4867391.67943	-95523.91841	4108341.25269	A
366	VITO 19385M001	4679398.05786	-218437.05471	4314897.95384	A
43	YEBE 13420M001	4848724.90588	-261632.49384	4123093.89889	W
44	ZARA 13462M001	4773803.53282	-73506.53889	4215453.67287	W

5.3 ETRF2014 (ETRS89) Coordinates

European Terrestrial Reference System, 1989 (ETRS89) is realized by ETRF2014 (Boucher and Altamimi, 2011) and (Altamimi, 2017).

ETRF2014 FINAL COORD. wk 2060		22-JUL-19 19:52			
LOCAL GEODETIC DATUM: ETRF2014		EPOCH: 2019-07-03 12:00:00			
NUM	STATION NAME	X (M)	Y (M)	Z (M)	FLAG
1	ACOR 13434M001	4594489.82127	-678368.02266	4357065.91495	W
33	ALDA 19383M001	4687280.47304	-190877.15279	4308106.58764	A
42	ALSA 19419M001	4677251.15036	-176770.97937	4319079.50866	A
44	AMUR 19388M001	4661499.75827	-244591.84445	4332269.51943	A
78	BLAZ 10074M002	4634456.37905	-124345.55952	4365785.09548	A
79	BIDA 00000M000	4644178.14503	-145778.90622	4354832.11937	A
89	BRZR 19387M001	4662221.30868	-220770.48315	4333309.08001	A
9	CACE 13447M001	4899866.75716	-544567.64595	4033769.81370	W
10	CANT 13438M001	4625924.61662	-307096.81488	4365771.19026	W
114	CHER 00000M000	4645880.64516	-125722.50973	4353624.00878	A
15	CREU 13432M001	4715420.49372	273177.46934	4271946.47567	W
16	EBRE 13410M001	4833520.31559	41536.78867	4147461.33571	W
135	ELGE 19353S001	4657557.72226	-202242.05876	4338991.50752	A
137	EMAZ 17001M001	4645924.51184	-276950.44897	4347759.21205	A
157	GERN 19389M001	4642811.63367	-217223.50820	4353278.51854	A
177	IGEL 19352S001	4645951.75140	-165575.08698	4352550.05633	A
182	ISPS 19484M001	4640596.79562	-206964.35985	4356391.55045	A
187	KAST 19499M001	4646949.39222	-240747.85979	4348014.62798	A
192	LARE 19440M001	4632832.25813	-279026.72126	4360314.06139	A
193	LAZK 19354S001	4666098.66104	-178186.77648	4330463.31068	A
197	LEIT 19428M001	4663521.25761	-155859.30363	4334519.51992	A
253	ORON 19427M001	4659696.09927	-130865.31797	4338948.51644	A
30	PASA 19351S001	4644909.38194	-156645.65133	4353622.71551	W
33	RI01 13448M002	4708447.13831	-199490.87462	4284089.36817	W
34	SALA 13469M001	4803054.75569	-462131.66790	4158378.69795	W
35	SOA 10088M002	4639940.82254	-136225.52291	4359552.05067	W
313	SOPU 19386M001	4643998.21702	-255914.48955	4350062.77804	A
333	TERU 13487M001	4867391.63260	-95523.95793	4108341.30068	A
366	VITO 19385M001	4679398.01334	-218437.09453	4314898.00219	A
43	YEBE 13420M001	4848724.85974	-261632.53286	4123093.94685	W
44	ZARA 13462M001	4773803.48689	-73506.57885	4215453.72108	W

6 Quality Control

6.1 Mean and Daily Repeatabilities

In this section, the mean and daily repeatabilities of the sites are shown. Repeatabilities refer to the IGS14 solution and are given with respect the Local frame (North-East-Up).

ARA LAC 2060 WEEK FINAL COMBINATION: PRECISE ORBITS 22-JUL-19 19:52

Station	#Days	Weekday 0123456	Repeatability (mm)		
			N	E	U
ACOR 13434M001	7	XXXXXX	0.98	0.65	2.35
ALDA 19383M001	7	XXXXXX	1.02	1.43	6.59
ALSA 19419M001	7	XXXXXX	2.07	0.86	3.36
AMUR 19388M001	7	XXXXXX	0.93	1.26	4.93
BLAZ 10074M002	7	XXXXXX	1.32	1.40	6.74
BIDA 00000M000	7	XXXXXX	1.48	1.29	3.19
BRZR 19387M001	7	XXXXXX	1.07	1.13	6.62
CACE 13447M001	7	XXXXXX	1.21	1.37	5.19
CANT 13438M001	7	XXXXXX	1.18	0.78	3.67
CHER 00000M000	7	XXXXXX	1.50	1.68	4.62
CREU 13432M001	7	XXXXXX	2.10	0.95	8.64
EBRE 13410M001	7	XXXXXX	1.49	0.59	2.42
ELGE 19353S001	6	X XXXX	0.95	1.06	4.00
EMAZ 17001M001	7	XXXXXX	1.27	1.02	5.42
GERN 19389M001	7	XXXXXX	1.17	1.03	3.49
IGEL 19352S001	7	XXXXXX	0.88	0.67	2.48
ISPS 19484M001	7	XXXXXX	1.70	0.89	4.75
KAST 19499M001	7	XXXXXX	1.07	0.57	4.12
LARE 19440M001	7	XXXXXX	1.43	1.65	6.69
LAZK 19354S001	7	XXXXXX	1.12	0.75	3.20
LEIT 19428M001	7	XXXXXX	0.75	1.37	5.00
ORON 19427M001	7	XXXXXX	1.36	1.37	2.36
PASA 19351S001	7	XXXXXX	0.52	0.78	2.50
RI01 13448M002	7	XXXXXX	1.44	1.13	4.52
SALA 13469M001	7	XXXXXX	1.13	1.49	4.69
SCOA 10088M002	7	XXXXXX	1.03	0.94	3.24
SOPU 19386M001	7	XXXXXX	1.28	0.52	4.12
TERU 13487M001	7	XXXXXX	0.62	0.71	2.68
VITO 19385M001	7	XXXXXX	0.86	0.66	4.65
YEBE 13420M001	7	XXXXXX	0.75	1.19	2.29
ZARA 13462M001	7	XXXXXX	0.72	1.26	3.83

Comparison of individual solutions:

ACOR 13434M001	N	0.98	0.17	-0.03	-1.78	-1.27	-0.83	0.20	0.38
ACOR 13434M001	E	0.65	0.16	-0.81	0.51	1.10	0.50	0.11	0.32
ACOR 13434M001	U	2.35	0.60	0.39	1.86	3.69	0.59	-0.61	3.84
ALDA 19383M001	N	1.02	0.28	0.42	1.58	-1.86	-0.09	0.22	0.12
ALDA 19383M001	E	1.43	-0.22	0.47	-0.49	-2.10	2.58	-0.26	-0.84
ALDA 19383M001	U	6.59	1.64	5.53	-1.69	4.94	-13.27	-4.64	1.65
ALSA 19419M001	N	2.07	1.56	1.07	0.33	1.61	-3.03	-1.96	2.52
ALSA 19419M001	E	0.86	0.80	0.51	0.26	-1.47	0.09	-1.14	-0.01
ALSA 19419M001	U	3.36	-3.18	2.74	1.51	-1.13	-0.70	2.20	-6.43
AMUR 19388M001	N	0.93	-0.11	-0.34	-0.29	0.79	0.66	1.96	0.25
AMUR 19388M001	E	1.26	0.94	-0.51	-0.54	-0.83	2.48	-1.10	-0.30
AMUR 19388M001	U	4.93	-5.40	-4.74	0.86	-2.73	-8.39	3.83	0.94
BLAZ 10074M002	N	1.32	0.11	0.10	0.12	0.52	2.91	0.61	1.12
BLAZ 10074M002	E	1.40	2.17	-0.60	-0.14	-1.02	0.85	-2.19	-0.46
BLAZ 10074M002	U	6.74	0.54	2.35	6.41	9.82	1.94	-11.07	1.61
BIDA 00000M000	N	1.48	-0.88	-0.54	0.90	0.20	2.47	1.93	1.18
BIDA 00000M000	E	1.29	0.40	-0.60	0.27	-2.34	1.82	-0.79	-0.08
BIDA 00000M000	U	3.19	0.34	4.96	1.66	2.87	-3.09	1.52	3.66
BRZR 19387M001	N	1.07	0.34	0.41	1.31	-0.34	0.09	2.05	-0.77
BRZR 19387M001	E	1.13	1.00	-2.00	0.18	0.99	-1.26	-0.18	-0.18
BRZR 19387M001	U	6.62	-5.91	5.75	6.51	9.59	-2.30	-2.27	-7.09
CACE 13447M001	N	1.21	0.60	0.70	0.21	-1.91	-1.86	0.07	0.85
CACE 13447M001	E	1.37	-2.06	0.86	1.39	1.34	-0.94	-0.10	1.31
CACE 13447M001	U	5.19	8.99	-6.72	-2.99	2.36	-4.30	1.60	0.26
CANT 13438M001	N	1.18	-0.22	-1.25	0.64	1.36	0.03	0.47	2.07
CANT 13438M001	E	0.78	0.19	-0.06	0.48	-0.65	-0.70	-0.12	-1.56
CANT 13438M001	U	3.67	-2.87	7.98	-0.52	-1.62	-0.89	0.47	-2.25
CHER 00000M000	N	1.50	-0.10	0.00	-1.51	0.27	1.06	2.81	1.44
CHER 00000M000	E	1.68	1.26	-1.55	-2.26	0.29	0.67	1.48	-2.25
CHER 00000M000	U	4.62	1.62	7.16	5.26	-1.56	1.48	-4.91	4.20
CREU 13432M001	N	2.10	-1.81	-0.70	-0.78	-1.04	-1.74	4.14	0.91
CREU 13432M001	E	0.95	-1.37	-0.64	-0.25	0.67	0.89	0.92	-0.98
CREU 13432M001	U	8.64	-11.00	-1.97	-0.07	15.90	3.74	-0.82	-7.42
EBRE 13410M001	N	1.49	0.95	-0.13	-1.16	-0.71	0.15	2.35	-2.22
EBRE 13410M001	E	0.59	0.11	-1.01	-0.65	0.44	-0.41	0.34	0.42
EBRE 13410M001	U	2.42	-2.92	3.24	-1.83	-3.04	1.47	-0.73	0.80
ELGE 19353S001	N	0.95	-0.06		0.73	-0.56	1.66	0.38	0.90
ELGE 19353S001	E	1.06	0.27		-1.01	1.76	-1.05	-0.51	-0.26
ELGE 19353S001	U	4.00	-3.71		6.37	3.40	-1.65	-1.20	-3.14
EMAZ 17001M001	N	1.27	0.49	0.92	0.43	1.52	-2.19	0.32	-1.10
EMAZ 17001M001	E	1.02	-0.15	1.54	-0.91	-0.62	-0.22	0.77	-1.43
EMAZ 17001M001	U	5.42	-1.95	0.15	2.03	-11.16	0.59	5.56	3.57
GERN 19389M001	N	1.17	0.75	-0.24	0.57	-0.70	-0.31	2.54	0.49
GERN 19389M001	E	1.03	-0.10	-1.46	-0.66	1.00	1.27	-1.03	-0.40
GERN 19389M001	U	3.49	-3.47	2.83	2.77	6.27	0.12	-1.05	-2.19
IGEL 19352S001	N	0.88	0.52	-0.28	0.45	1.48	0.99	0.73	-0.66
IGEL 19352S001	E	0.67	-0.23	0.76	-0.48	-0.48	0.75	-0.38	-0.97
IGEL 19352S001	U	2.48	-1.29	3.81	2.20	3.25	0.48	-1.74	-1.48
ISPS 19484M001	N	1.70	-0.65	-0.43	-0.17	-0.10	2.40	3.16	-0.96
ISPS 19484M001	E	0.89	-0.17	-1.28	-0.43	1.55	-0.57	-0.08	-0.40
ISPS 19484M001	U	4.75	1.60	5.13	6.76	1.60	-7.08	-2.35	-1.63
KAST 19499M001	N	1.07	-0.15	-0.25	1.92	-0.59	0.38	1.61	0.23
KAST 19499M001	E	0.57	0.31	0.19	-1.12	-0.34	0.36	-0.47	-0.33
KAST 19499M001	U	4.12	-1.49	3.34	2.99	8.01	-2.13	-2.77	-1.83
LARE 19440M001	N	1.43	-0.63	-0.33	-0.36	3.08	0.46	-1.26	-0.59
LARE 19440M001	E	1.65	0.10	-0.97	-1.85	-0.39	0.91	2.52	-2.16
LARE 19440M001	U	6.69	0.85	-4.85	3.38	-8.32	-6.22	10.25	4.45
LAZK 19354S001	N	1.12	-0.12	-0.43	0.35	0.79	1.03	2.23	-0.69
LAZK 19354S001	E	0.75	0.33	-0.33	-1.08	0.12	-1.27	0.59	0.13
LAZK 19354S001	U	3.20	-0.74	0.69	3.75	1.33	-4.79	-0.66	4.58

LEIT 19428M001	N	0.75	0.97	-0.50	-0.08	1.36	0.54	-0.19	-0.01
LEIT 19428M001	E	1.37	0.14	0.62	0.13	-1.28	2.26	-0.80	-1.86
LEIT 19428M001	U	5.00	-0.75	0.77	0.37	1.54	-11.36	4.04	0.81
ORDN 19427M001	N	1.36	-0.18	-0.77	-0.05	2.35	-0.45	-0.89	1.99
ORDN 19427M001	E	1.37	-0.64	0.02	-0.96	-1.06	2.73	0.15	-1.17
ORDN 19427M001	U	2.36	2.17	0.29	0.23	2.77	-2.88	2.98	1.97
PASA 19351S001	N	0.52	0.63	0.59	0.36	0.34	0.09	0.70	0.40
PASA 19351S001	E	0.78	-0.05	1.16	-0.29	-0.35	-0.48	-0.07	-1.37
PASA 19351S001	U	2.50	-2.91	2.56	3.03	3.45	-1.06	-0.07	-0.56
RIO1 13448M002	N	1.44	0.22	-0.65	0.84	0.56	-1.82	1.15	2.50
RIO1 13448M002	E	1.13	-1.03	1.37	-0.66	-0.03	0.94	-1.79	-0.50
RIO1 13448M002	U	4.52	-0.55	2.27	-4.69	-4.21	-3.75	6.41	4.74
SALA 13469M001	N	1.13	-0.20	-0.89	1.20	1.09	0.37	0.72	-1.88
SALA 13469M001	E	1.49	-1.01	-0.80	0.85	0.45	-3.07	1.12	-0.13
SALA 13469M001	U	4.69	0.70	-5.35	-1.50	-3.54	3.77	-1.01	8.53
SCDA 10088M002	N	1.03	0.21	-0.53	0.12	0.84	0.64	1.57	1.55
SCDA 10088M002	E	0.94	0.48	0.22	0.23	-1.43	0.08	0.94	-1.41
SCDA 10088M002	U	3.24	1.79	0.65	3.65	6.61	0.54	-1.40	-0.11
SOPU 19386M001	N	1.28	-0.47	-0.40	0.78	-0.58	2.00	1.97	0.74
SOPU 19386M001	E	0.52	-0.04	-0.36	-0.61	-0.06	-0.25	0.47	-0.91
SOPU 19386M001	U	4.12	-0.24	3.64	3.88	5.13	-5.26	-4.17	1.48
TERU 13487M001	N	0.62	0.20	-0.02	-1.27	0.66	0.01	-0.49	-0.07
TERU 13487M001	E	0.71	-1.22	0.05	0.70	-0.12	-0.60	0.81	-0.17
TERU 13487M001	U	2.68	0.94	-0.95	-3.99	4.45	-1.61	-0.52	1.68
VITO 19385M001	N	0.86	-0.06	0.65	0.36	0.84	-0.63	0.07	1.67
VITO 19385M001	E	0.66	-0.42	1.21	0.11	-0.38	0.61	-0.67	-0.16
VITO 19385M001	U	4.65	-7.23	2.51	0.88	0.77	-3.66	-1.36	-7.40
YEBE 13420M001	N	0.75	1.29	-0.55	-0.69	0.09	0.37	-0.87	-0.01
YEBE 13420M001	E	1.19	-0.78	-0.85	1.79	0.23	-0.62	1.83	-0.37
YEBE 13420M001	U	2.29	-2.17	-0.98	-0.50	1.39	2.65	3.51	2.03
ZARA 13462M001	N	0.72	0.87	-0.13	-0.31	0.18	0.28	1.45	0.08
ZARA 13462M001	E	1.26	0.15	1.34	0.91	-2.18	0.92	-0.46	-1.02
ZARA 13462M001	U	3.83	1.20	-0.29	1.91	-7.53	-1.65	-4.33	-2.20

6.2 Datum verification

In this section, the datum verification is shown. A 3 parameter Helmert 3D (3 translations) is computed to the minimally constrained sites.

LOCAL GEODETIC DATUM: IGS14
RESIDUALS IN LOCAL SYSTEM (NORTH, EAST, UP)

NUM	NAME	FLG	RESIDUALS IN MILLIMETERS		
1	ACOR 13434M001	I W	-1.79	-0.27	1.37
2	ALAC 13433M001	I W	0.60	-0.02	0.11
3	ALBA 13452M001	I W	-0.16	-0.43	-0.29
4	ALME 13437M001	I W	-0.93	1.15	3.18
5	BCLN 13412M001	I W	0.35	0.43	2.56
6	BELL 13431M001	I W	-0.65	0.41	-0.52
7	BORR 13480M001	I W	0.01	-1.50	-1.33
8	BRST 10004M004	I W	-2.56	-0.03	0.32
9	CACE 13447M001	I W	1.59	2.29	0.12
10	CANT 13438M001	I W	-1.64	0.19	2.04
11	CARG 19412M001	I W	0.12	1.66	-0.69
12	CASC 13909S001	I W	1.30	-0.92	2.14
13	CEU1 13449M002	I W	0.39	0.56	1.06
14	COBA 13453M001	I W	1.51	0.45	-2.09
15	CREU 13432M001	I W	-1.01	0.94	0.73
16	EBRE 13410M001	I W	-0.05	0.67	2.05
17	ESCO 13435M001	I W	0.24	1.87	-7.87
18	FUNC 13911S001	I W	4.04	0.51	-2.67
19	GAIA 13902M001	I W	-0.23	-0.63	4.63
21	HUEL 13451M001	I W	1.17	-0.44	1.08
22	IZAN 31309M002	I W	1.55	0.36	-2.55
23	LLIV 13436M001	I W	-1.15	0.93	4.39
24	LPAL 81701M001	I W	-0.82	0.58	-0.74
25	LROC 10023M001	I W	0.87	-1.24	-1.08
26	MALA 13443M001	I W	0.67	-1.87	3.34
27	MAS1 31303M002	I W	1.06	0.39	4.85
29	MELI 19379M001	I W	1.94	-1.42	-5.99
30	PASA 19351S001	I W	-1.71	0.16	-2.96
31	PDEL 31906M004	I W	1.12	-0.99	2.34
32	RABT 35001M002	I W	1.30	-0.97	-5.93
33	RIO1 13448M002	I W	-1.69	1.39	-3.68
34	SALA 13469M001	I W	-0.29	-0.13	-3.27
35	SCOA 10088M002	I W	-3.32	-0.91	-1.84
38	SONS 13446M001	I W	-2.26	-0.41	-3.83
40	VALA 13463M002	I W	-0.87	-1.29	-2.22
41	VALE 13439M001	I W	-0.65	0.01	-0.62
42	VIGO 13450M001	I W	-0.25	0.20	6.65
43	YEBE 13420M001	I W	1.38	-1.08	2.60
44	ZARA 13462M001	I W	0.22	-0.44	1.21
45	ZIMM 14001M004	I W	0.59	-0.15	3.41
	RMS / COMPONENT		1.42	0.96	3.17
	MEAN		-0.00	0.00	0.00
	MIN		-3.32	-1.87	-7.87
	MAX		4.04	2.29	6.65

NUMBER OF PARAMETERS : 3
NUMBER OF COORDINATES : 120
RMS OF TRANSFORMATION : 2.08 MM

BARYCENTER COORDINATES:

LATITUDE : 39 38 24.91
LONGITUDE : - 4 55 15.75
HEIGHT : -43.871 KM

PARAMETERS:

TRANSLATION IN N : -0.00 +- 0.33 MM
TRANSLATION IN E : -0.00 +- 0.33 MM
TRANSLATION IN U : 0.00 +- 0.33 MM

6.3 Adjustment Statistics

In this section, the summary of the global adjustment and not subnetworks are shown. Also, the Helmert parameters of the combined solution with respect the daily solutions are shown.

```

* STATISTICAL PARAMETER-----VALUE(S)-----
NUMBER OF OBSERVATIONS          17710467
NUMBER OF UNKNOWN               217212
NUMBER OF DEGREES OF FREEDOM    17493255
PHASE MEASUREMENTS SIGMA        0.00100
SAMPLING INTERVAL (SECONDS)      180
VARIANCE FACTOR                  2.418700348130377

Helmert Transformation Parameters With Respect to Combined Solution:
-----
Sol  Rms (m)      Translation (m)      Rotation (")
      X          Y          Z          X          Y          Z      Scale (ppm)
-----
  1  0.00205      0.0012  0.0112  0.0017  -0.0002 -0.0000  0.0003  -0.00018
#PR_SBS  2 CRD  CRTG 13483M001      1  291  3  1  0  0  0  2019-07-01 00:00:00  2019-07-01 23:59:30
  2  0.00214      -0.0057 -0.0011  0.0038  0.0001 -0.0002  0.0000  0.00026
#PR_SBS  3 CRD  CRTG 13483M001      1  304  1  1  0  0  0  2019-07-02 00:00:00  2019-07-02 23:59:30
#PR_SBS  3 CRD  CRTG 13483M001      1  305  2  1  0  0  0  2019-07-02 00:00:00  2019-07-02 23:59:30
#PR_SBS  3 CRD  CRTG 13483M001      1  306  3  1  0  0  0  2019-07-02 00:00:00  2019-07-02 23:59:30
  3  0.00241      -0.0162  0.0018  0.0258  -0.0001 -0.0010  0.0000  -0.00057
#PR_SBS  4 CRD  CRTG 13483M001      1  298  1  1  0  0  0  2019-07-03 00:00:00  2019-07-03 23:59:30
#PR_SBS  4 CRD  CRTG 13483M001      1  299  2  1  0  0  0  2019-07-03 00:00:00  2019-07-03 23:59:30
#PR_SBS  4 CRD  CRTG 13483M001      1  300  3  1  0  0  0  2019-07-03 00:00:00  2019-07-03 23:59:30
  4  0.00293      -0.0152 -0.0373  0.0249  0.0008 -0.0009 -0.0009  -0.00085
  5  0.00218      0.0182  0.0179 -0.0164  -0.0002  0.0008  0.0006  -0.00039
  6  0.00247      -0.0088 -0.0093  0.0094  0.0001 -0.0004 -0.0003  -0.00004
  7  0.00255      -0.0012 -0.0171  0.0012  0.0003 -0.0000 -0.0004  -0.00005
    
```

```

Statistics of individual solutions:
-----
File  RMS (m)      DOF  Chi**2/DOF  #Observations authentic / pseudo  #Parameters explicit / implicit / singular
-----
  1  0.00149      2528435  2.21  2560162  3  1002  30728  0
  2  0.00152      2474835  2.30  2505448  3  980  29636  2
  3  0.00152      2541510  2.32  2572772  3  1011  30254  0
  4  0.00162      2499007  2.62  2533136  3  1005  33127  0
  5  0.00160      2496638  2.55  2528878  3  996  31247  0
  6  0.00157      2427675  2.45  2458886  3  1002  30212  0
  7  0.00156      2519197  2.43  2551185  3  999  30992  0
    
```

7 Equipment

7.1 Receiver List

Serial numbers not shown.

```

*SITE PT SOLN T DATA_START__ DATA_END____ DESCRIPTION_____ S/N__ FIRMWARE____
ACOR  A  1 P 19:181:00000 19:187:86370 LEICA GR10  -----
ALDA  A  1 P 19:181:00000 19:187:86370 LEICA GR10  -----
ALSA  A  1 P 19:181:00000 19:187:86370 LEICA GR50  -----
AMUR  A  1 P 19:181:00000 19:187:86370 LEICA GR10  -----
BIAZ  A  1 P 19:181:00000 19:187:86370 TRI SP90M  -----
BIDA  A  1 P 19:181:00000 19:187:86370 LEICA GR10  -----
BRZR  A  1 P 19:181:00000 19:187:86370 LEICA GR30  -----
CACE  A  1 P 19:181:00000 19:187:86370 TRIMBLE NETR9  -----
CANT  A  1 P 19:181:00000 19:187:86370 LEICA GR10  -----
CHER  A  1 P 19:181:00000 19:187:86370 LEICA GRX1200+GNSS  -----
CREU  A  1 P 19:181:00000 19:187:86370 LEICA GR50  -----
EBRE  A  1 P 19:181:00000 19:187:86370 LEICA GR50  -----
ELGE  A  1 P 19:181:00000 19:187:86370 LEICA GR30  -----
EMAZ  A  1 P 19:181:00000 19:187:86370 LEICA GR30  -----
GERN  A  1 P 19:181:00000 19:187:86370 LEICA GR30  -----
IGEL  A  1 P 19:181:00000 19:187:86370 LEICA GR30  -----
ISPS  A  1 P 19:181:00000 19:187:86370 TRIMBLE NETR9  -----
KAST  A  1 P 19:181:00000 19:187:86370 LEICA GR30  -----
LARE  A  1 P 19:181:00000 19:187:86370 LEICA GRX1200GGPRD  -----
LAZK  A  1 P 19:181:00000 19:187:86370 LEICA GR10  -----
LEIT  A  1 P 19:181:00000 19:187:86370 LEICA GR50  -----
ORON  A  1 P 19:181:00000 19:187:86370 LEICA GR50  -----
PASA  A  1 P 19:181:00000 19:187:86370 LEICA GR30  -----
RIO1  A  1 P 19:181:00000 19:187:86370 LEICA GR25  -----
SALA  A  1 P 19:181:00000 19:187:82770 LEICA GRX1200+GNSS  -----
SCOA  A  1 P 19:181:00000 19:187:86370 LEICA GR25  -----
SOPU  A  1 P 19:181:00000 19:187:86370 LEICA GR30  -----
TERU  A  1 P 19:181:00000 19:187:86370 LEICA GRX1200GGPRD  -----
VITO  A  1 P 19:181:00000 19:187:86370 LEICA GR10  -----
YEBE  A  1 P 19:181:00000 19:187:86370 TRIMBLE NETR9  -----
ZARA  A  1 P 19:181:00000 19:187:86370 TRIMBLE NETR9  -----
    
```

7.2 Antennas

Serial number ONLY provided in case individual calibrations are available.

```
*SITE PT SOLN T DATA_START__ DATA_END_____ DESCRIPTION_____ S/N__
ACOR A 1 P 19:181:00000 19:187:86370 LEIAT504 LEIS -----
ALDA A 1 P 19:181:00000 19:187:86370 LEIAS10 NONE -----
ALSA A 1 P 19:181:00000 19:187:86370 LEIAR10 NONE -----
AMUR A 1 P 19:181:00000 19:187:86370 LEIAS10 NONE -----
BIAZ A 1 P 19:181:00000 19:187:86370 LEIAR25 LEIT -----
BIDA A 1 P 19:181:00000 19:187:86370 LEIAS10 NONE -----
BRZR A 1 P 19:181:00000 19:187:86370 LEIAS10 NONE -----
CACE A 1 P 19:181:00000 19:187:86370 TRM29659.00 NONE -----
CANT A 1 P 19:181:00000 19:187:86370 LEIAR25.R4 LEIT 25066
CHER A 1 P 19:181:00000 19:187:86370 LEIAX1203+GNSS NONE -----
CREU A 1 P 19:181:00000 19:187:86370 LEIAR25.R4 NONE 26357
EBRE A 1 P 19:181:00000 19:187:86370 LEIAR25.R4 NONE 26359
ELGE A 1 P 19:181:00000 19:187:86370 LEIAR25.R4 LEIT -----
EMAZ A 1 P 19:181:00000 19:187:86370 LEIAS10 NONE -----
GERN A 1 P 19:181:00000 19:187:86370 LEIAS10 NONE -----
IGEL A 1 P 19:181:00000 19:187:86370 LEIAR20 LEIM -----
ISPS A 1 P 19:181:00000 19:187:86370 TRM59900.00 SCIS -----
KAST A 1 P 19:181:00000 19:187:86370 LEIAS10 NONE -----
LARE A 1 P 19:181:00000 19:187:86370 LEIAT504 NONE -----
LAZK A 1 P 19:181:00000 19:187:86370 LEIAR25.R4 LEIT -----
LEIT A 1 P 19:181:00000 19:187:86370 LEIAR10 NONE -----
ORDN A 1 P 19:181:00000 19:187:86370 LEIAR10 NONE -----
PASA A 1 P 19:181:00000 19:187:86370 LEIAR20 LEIM 73034
RIO1 A 1 P 19:181:00000 19:187:86370 LEIAR25.R4 LEIT 25138
SALA A 1 P 19:181:00000 19:187:82770 LEIAR25 NONE -----
SCDA A 1 P 19:181:00000 19:187:86370 TRM55971.00 NONE -----
SOPU A 1 P 19:181:00000 19:187:86370 LEIAS10 NONE -----
TERU A 1 P 19:181:00000 19:187:86370 LEIAT504GG LEIS -----
VITO A 1 P 19:181:00000 19:187:86370 LEIAS10 NONE -----
YEBE A 1 P 19:181:00000 19:187:86370 TRM29659.00 NONE -----
ZARA A 1 P 19:181:00000 19:187:86370 TRM29659.00 NONE -----
```

7.3 Eccentricities

```
*
*SITE PT SOLN T DATA_START__ DATA_END_____ AXE ARP->BENCHMARK(M)_____
ACOR A 1 P 19:181:00000 19:187:86370 UNE 3.0460 0.0000 0.0000
ALDA A 1 P 19:181:00000 19:187:86370 UNE 0.0000 0.0000 0.0000
ALSA A 1 P 19:181:00000 19:187:86370 UNE 0.0000 0.0000 0.0000
AMUR A 1 P 19:181:00000 19:187:86370 UNE 0.0000 0.0000 0.0000
BIAZ A 1 P 19:181:00000 19:187:86370 UNE 0.0000 0.0000 0.0000
BIDA A 1 P 19:181:00000 19:187:86370 UNE 0.0000 0.0000 0.0000
BRZR A 1 P 19:181:00000 19:187:86370 UNE 0.0771 0.0000 0.0000
CACE A 1 P 19:181:00000 19:187:86370 UNE 0.0600 0.0000 0.0000
CANT A 1 P 19:181:00000 19:187:86370 UNE 3.0490 0.0000 0.0000
CHER A 1 P 19:181:00000 19:187:86370 UNE 0.0000 0.0000 0.0000
CREU A 1 P 19:181:00000 19:187:86370 UNE 0.0770 0.0000 0.0000
EBRE A 1 P 19:181:00000 19:187:86370 UNE 0.0770 0.0000 0.0000
ELGE A 1 P 19:181:00000 19:187:86370 UNE 0.0000 0.0000 0.0000
EMAZ A 1 P 19:181:00000 19:187:86370 UNE 0.0350 0.0000 0.0000
GERN A 1 P 19:181:00000 19:187:86370 UNE 0.0771 0.0000 0.0000
IGEL A 1 P 19:181:00000 19:187:86370 UNE 0.0000 0.0000 0.0000
ISPS A 1 P 19:181:00000 19:187:86370 UNE 0.0350 0.0000 0.0000
KAST A 1 P 19:181:00000 19:187:86370 UNE 0.0350 0.0000 0.0000
LARE A 1 P 19:181:00000 19:187:86370 UNE 0.0000 0.0000 0.0000
LAZK A 1 P 19:181:00000 19:187:86370 UNE 0.0000 0.0000 0.0000
LEIT A 1 P 19:181:00000 19:187:86370 UNE 0.0000 0.0000 0.0000
ORDN A 1 P 19:181:00000 19:187:86370 UNE 0.0000 0.0000 0.0000
PASA A 1 P 19:181:00000 19:187:86370 UNE 0.0000 0.0000 0.0000
RIO1 A 1 P 19:181:00000 19:187:86370 UNE 0.0606 0.0000 0.0000
SALA A 1 P 19:181:00000 19:187:82770 UNE 0.0600 0.0000 0.0000
SCDA A 1 P 19:181:00000 19:187:86370 UNE 0.0000 0.0000 0.0000
SOPU A 1 P 19:181:00000 19:187:86370 UNE 0.0771 0.0000 0.0000
TERU A 1 P 19:181:00000 19:187:86370 UNE 0.0600 0.0000 0.0000
VITO A 1 P 19:181:00000 19:187:86370 UNE 0.0000 0.0000 0.0000
YEBE A 1 P 19:181:00000 19:187:86370 UNE 0.0000 0.0000 0.0000
ZARA A 1 P 19:181:00000 19:187:86370 UNE 3.2590 0.0000 0.0000
```

8 Inconsistencies (logsheet-RINEX metadata)

The following inconsistencies were found comparing the data available in the logsheets and the RINEX headers:

```
2019-07-22 13:14 UTC | ELGE1820.190 | RECEIVER TYPE | LEICA GR10 -> LEICA GR30
2019-07-22 13:14 UTC | ELGE1820.190 | RECEIVER SER. NO. | 1701976 -> 1700316
2019-07-22 13:14 UTC | ELGE1820.190 | RECEIVER FIRM. VERS. | 4.20/6.524 -> 4.31/7.403
```

9 References

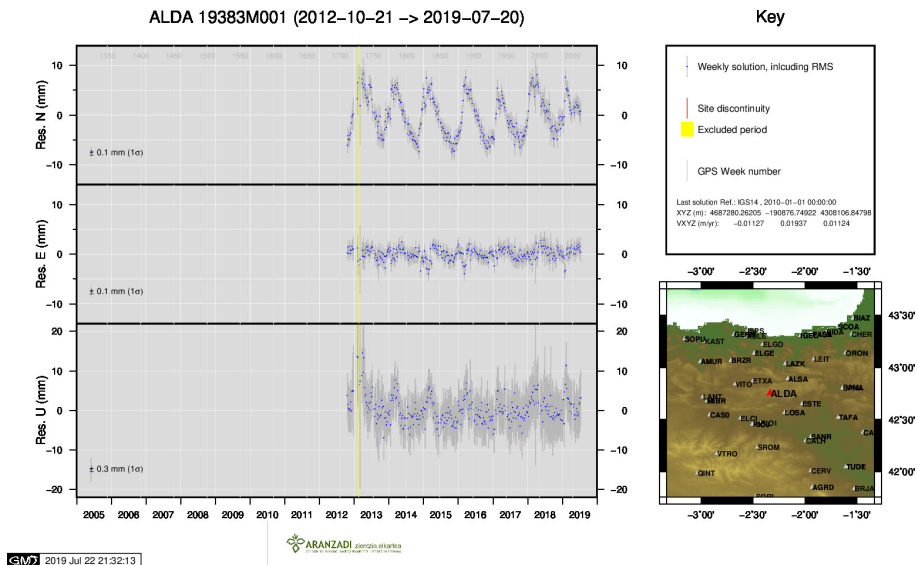
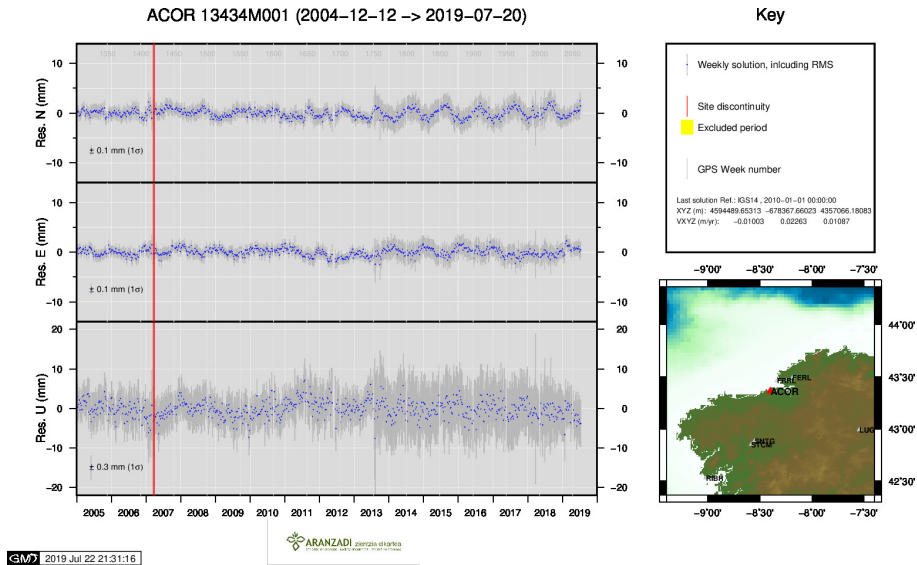
C. Boucher and Z. Altamimi (2011): *Specifications for reference frame fixing in the analysis of a EUREF GPS campaign*. etrs89.ensg.ign.fr/memo-V8.pdf

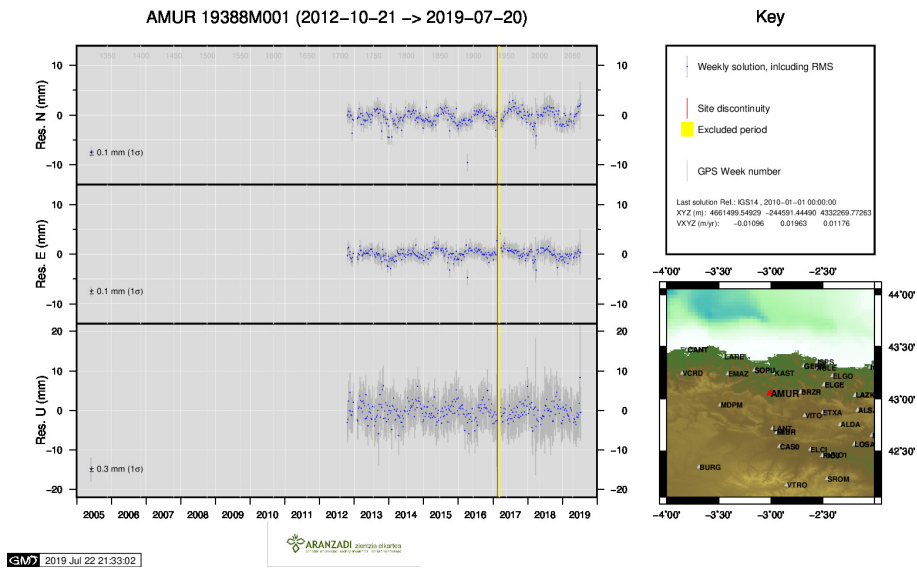
EPN Coordination Group and the EPN Central Bureau (2018): *Guidelines for the EPN Analysis Centres*. epncb.oma.be/documentation/guidelines/guidelines_analysis_centres.pdf

Z. Altamimi (2018): *EUREF Technical Note 1: Relationship and Transformation between the International and the European Terrestrial Reference Systems*. etrs89.ensg.ign.fr/pub/EUREF-TN-1.pdf

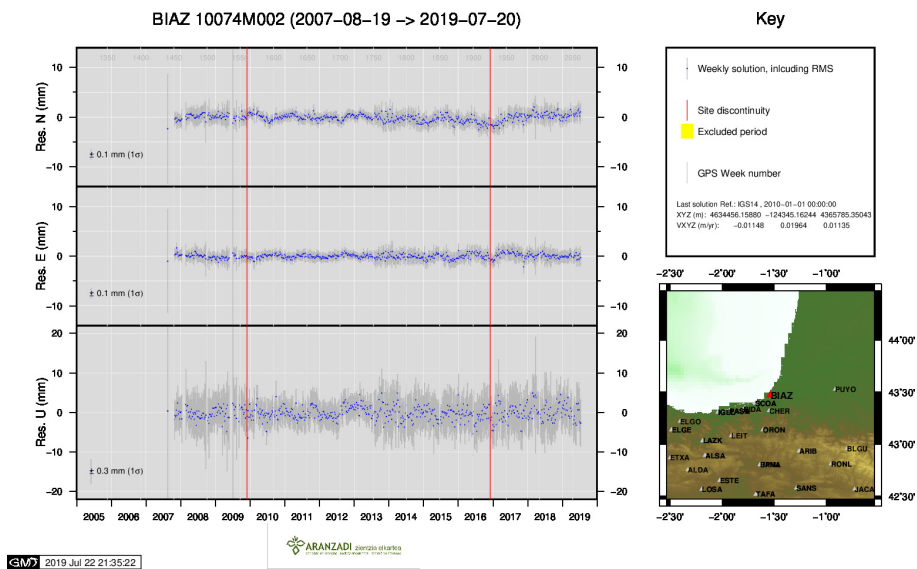
10 Cumulative Time Series

Time series of stations. Latest plots at: <http://geolabpasaia.org/gnss/ARA-net/TSeries/>, or click on the caption of each image.

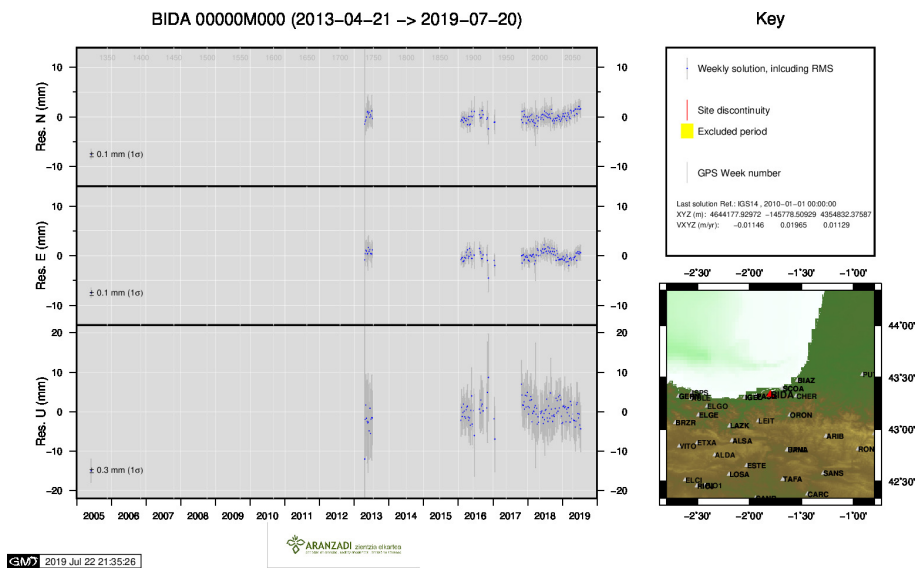




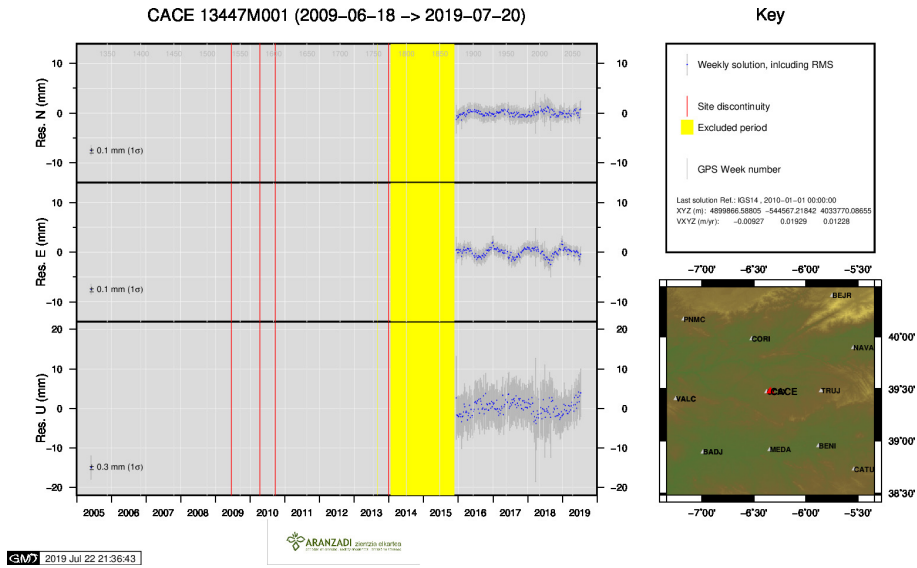
3) AMUR



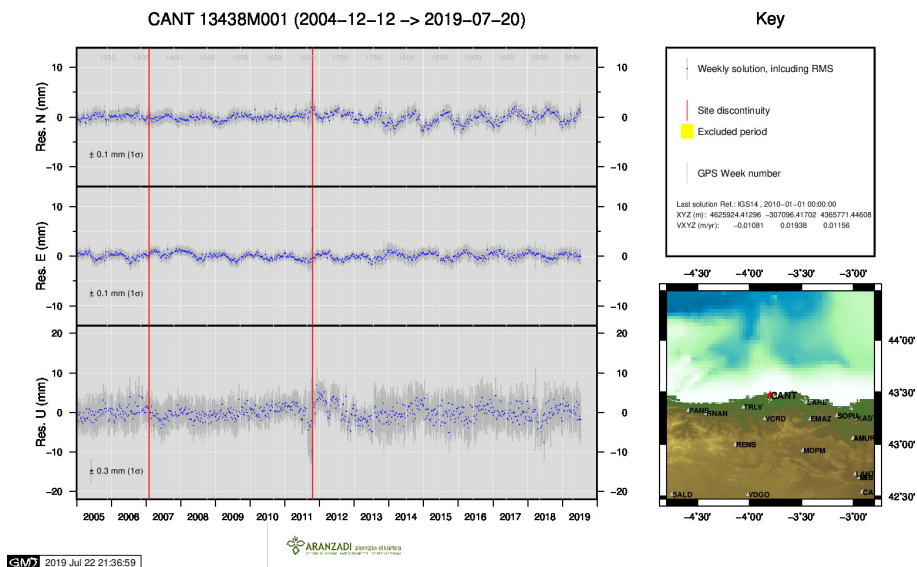
4) BIAZ



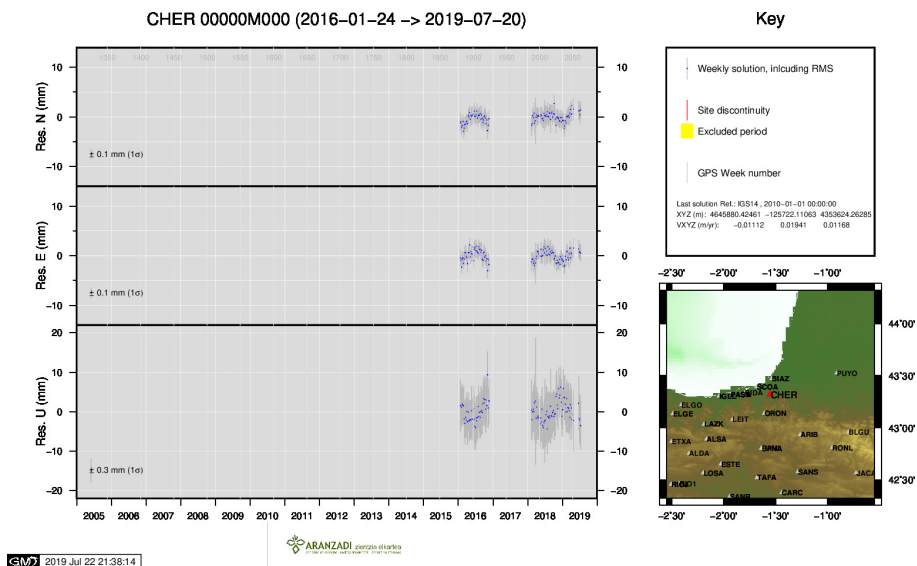
5) BIDA



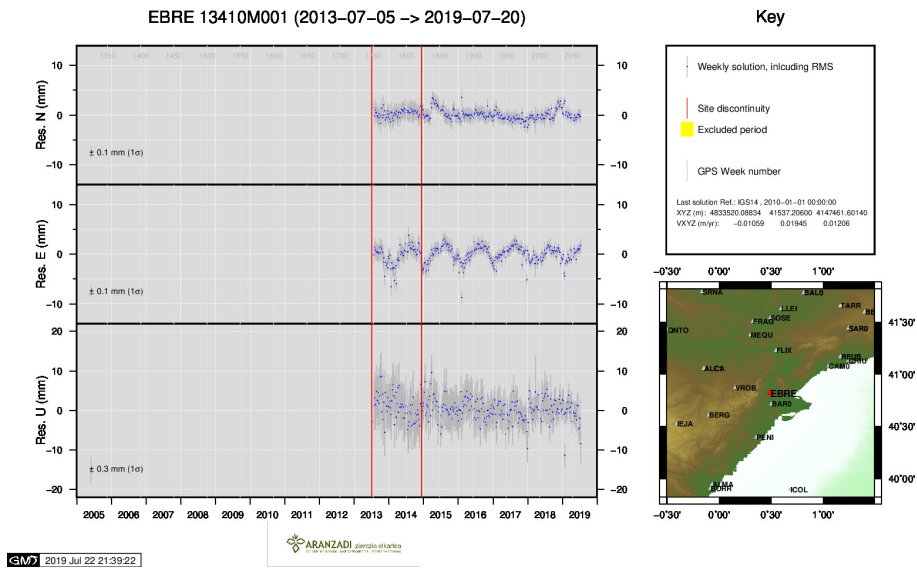
6) CACE



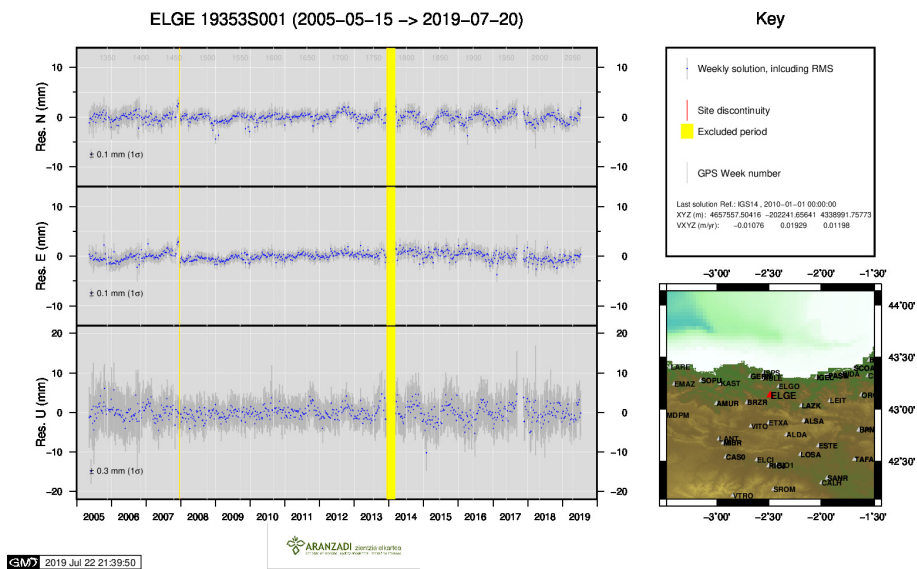
7) CANT



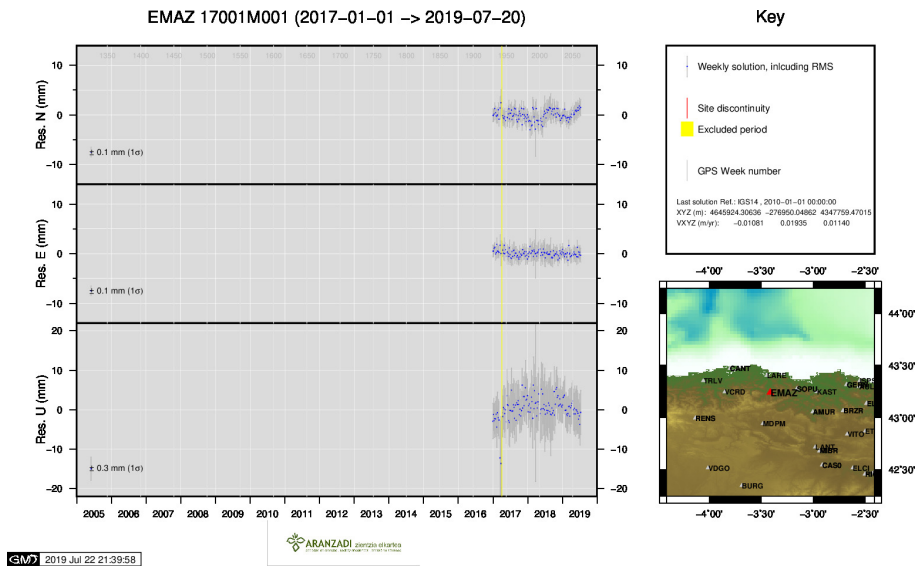
8) CHER



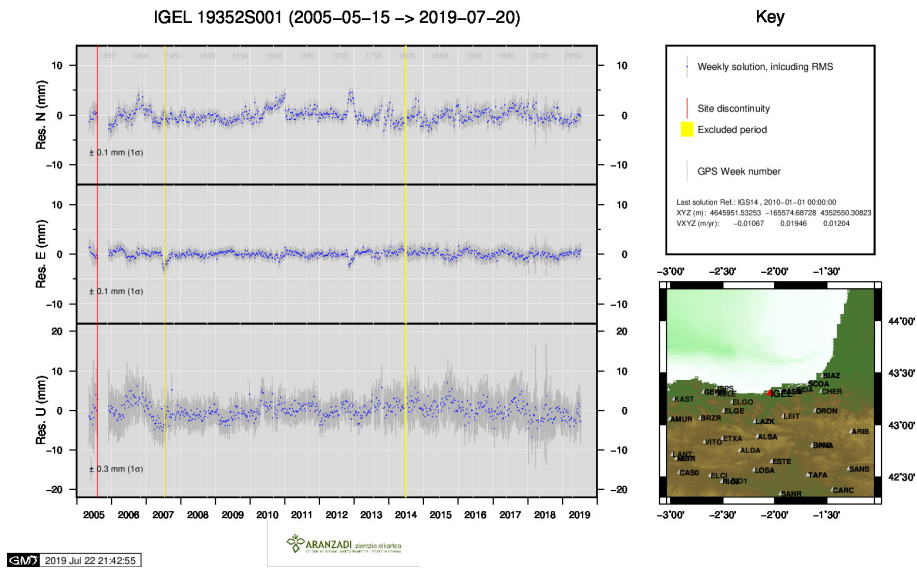
9) EBRE



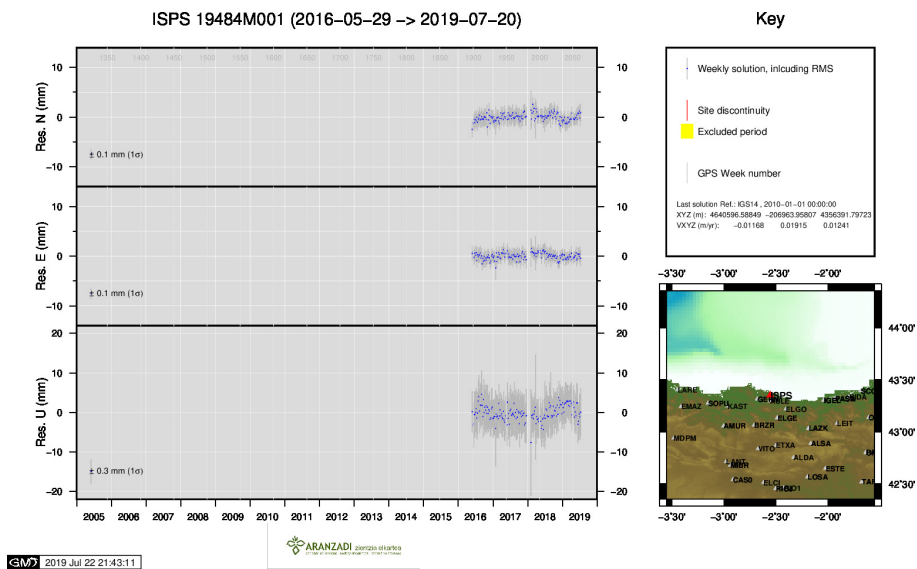
10) ELGE



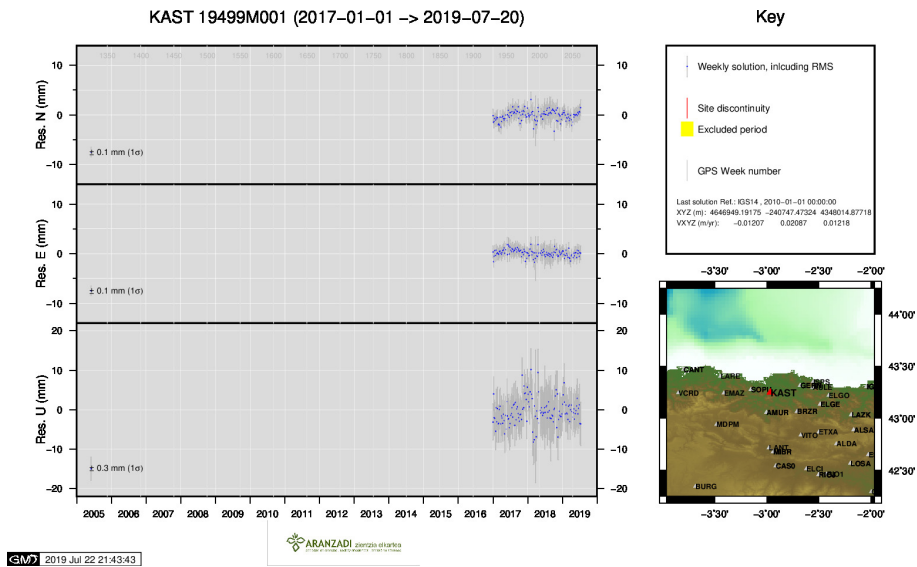
11) EMAZ



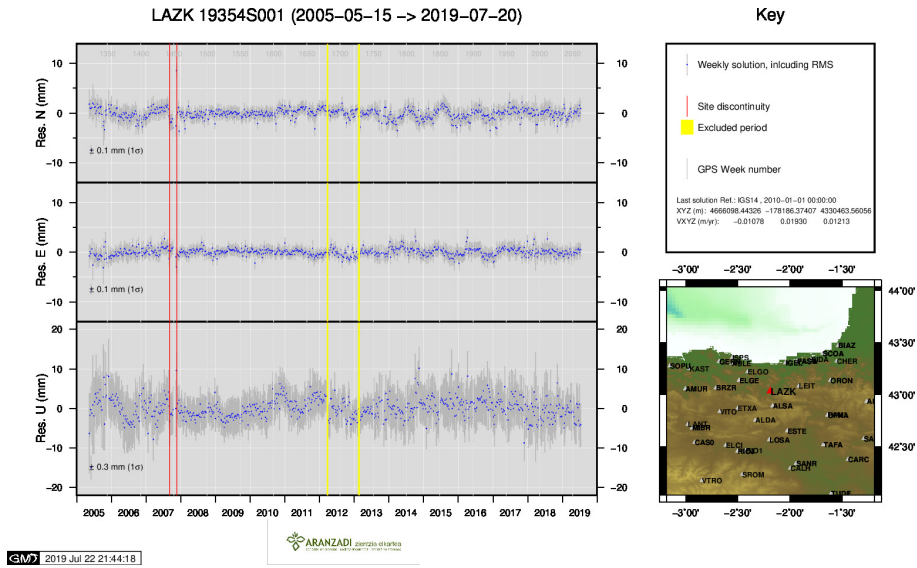
12) IGEL



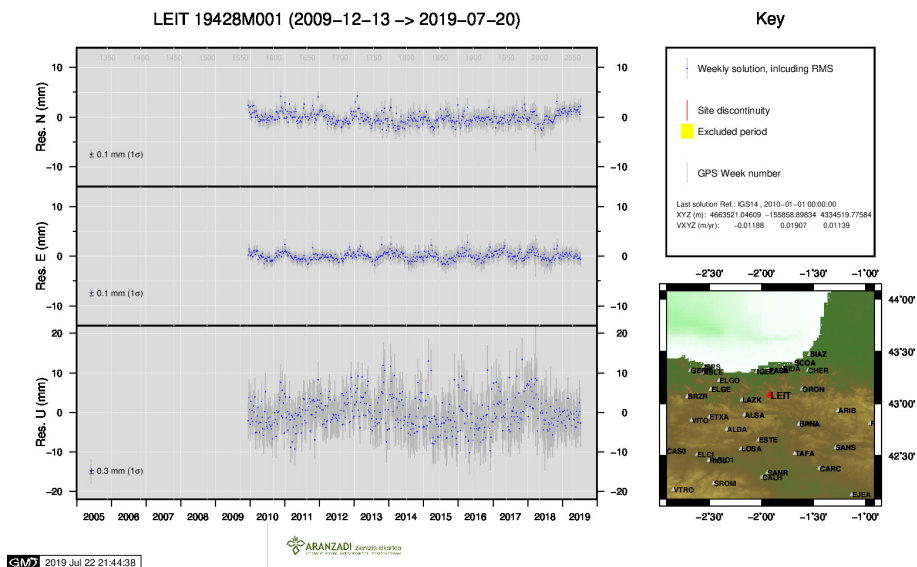
13) ISPS



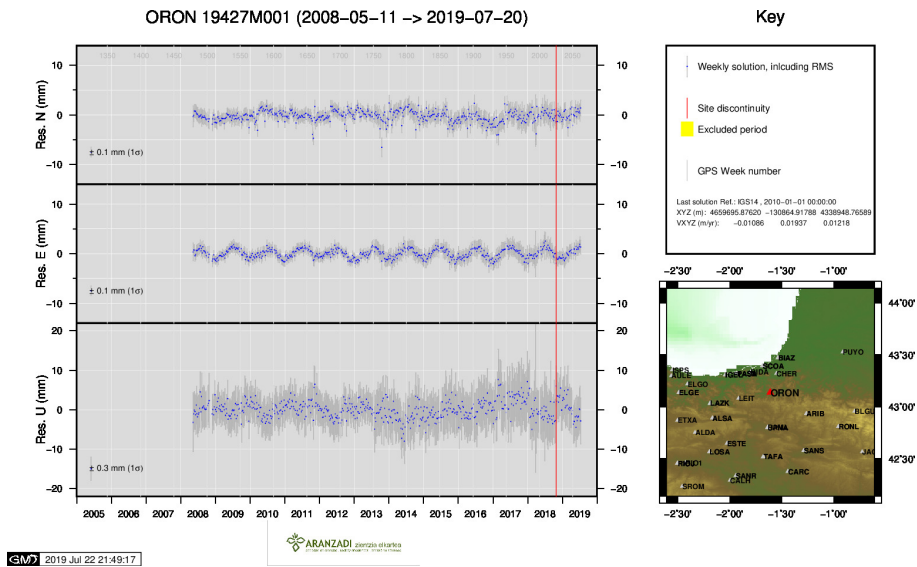
14) KAST



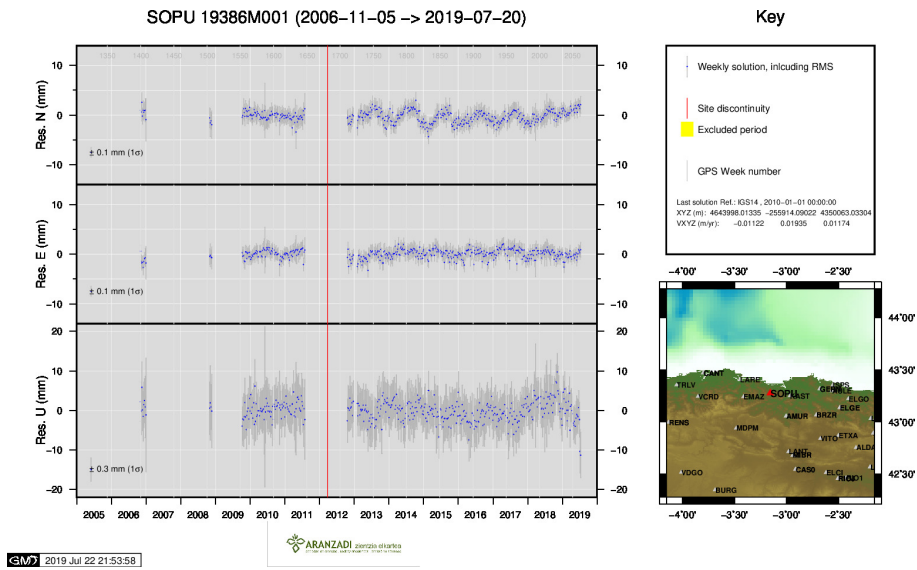
15) LAZK



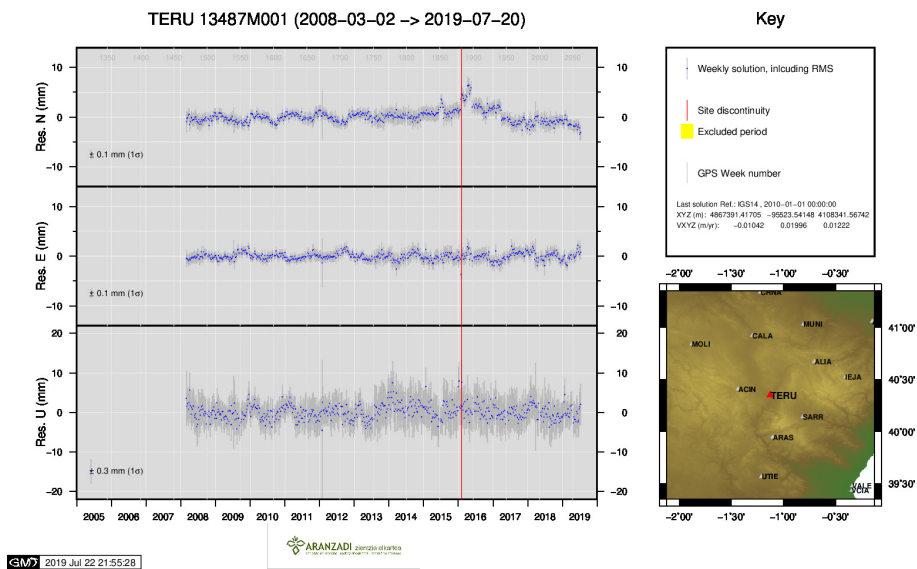
16) LEIT



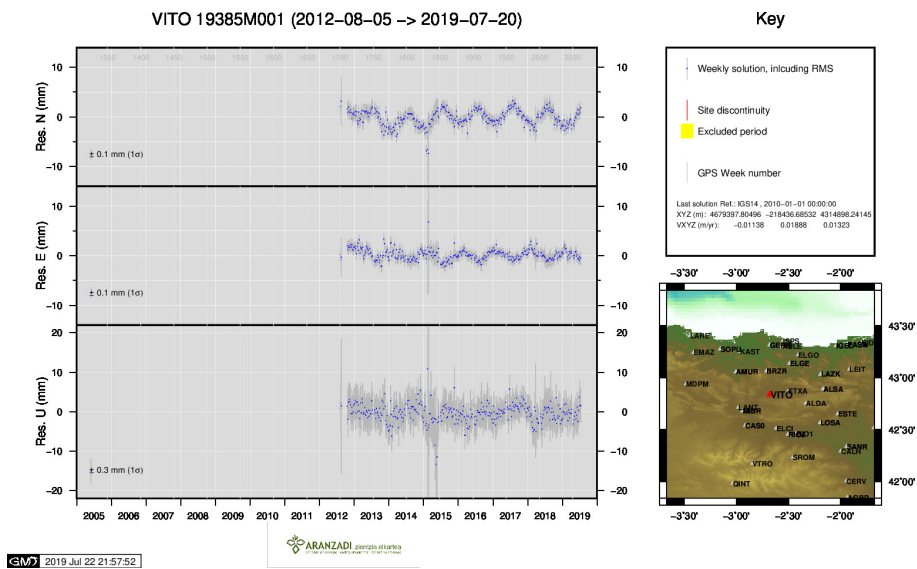
17) ORON



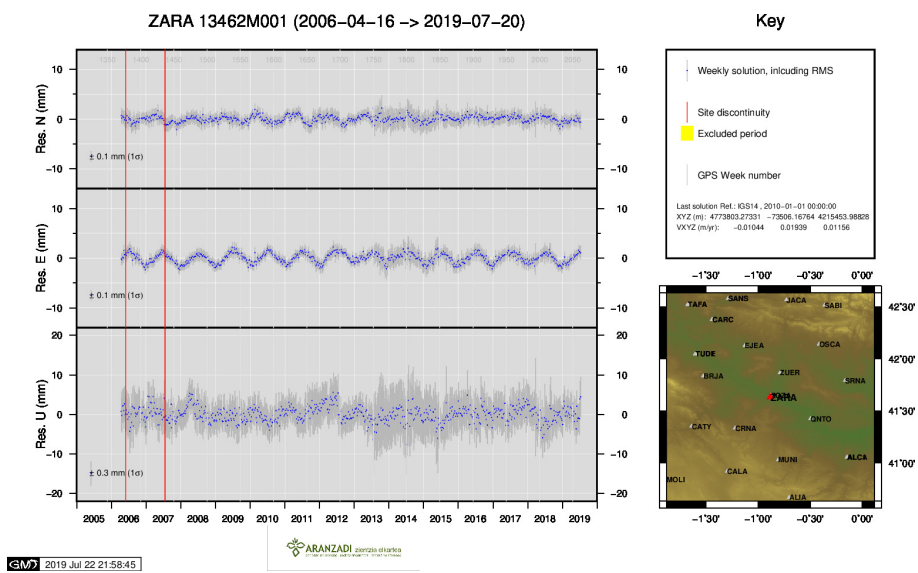
21) SOPU



22) TERU



23) VITO



24) ZARA