

ARA-DAC Weekly Analysis Result: 2053 (GFA)

Technical Report

GPS Week: 2053 (GFA)

<http://geolabpasaia.org/gnss/ARA-euref/>

ARA-DAC details:

Contact person: J. Zurutuza

Contact mail: geodesia@aranzadi.eus

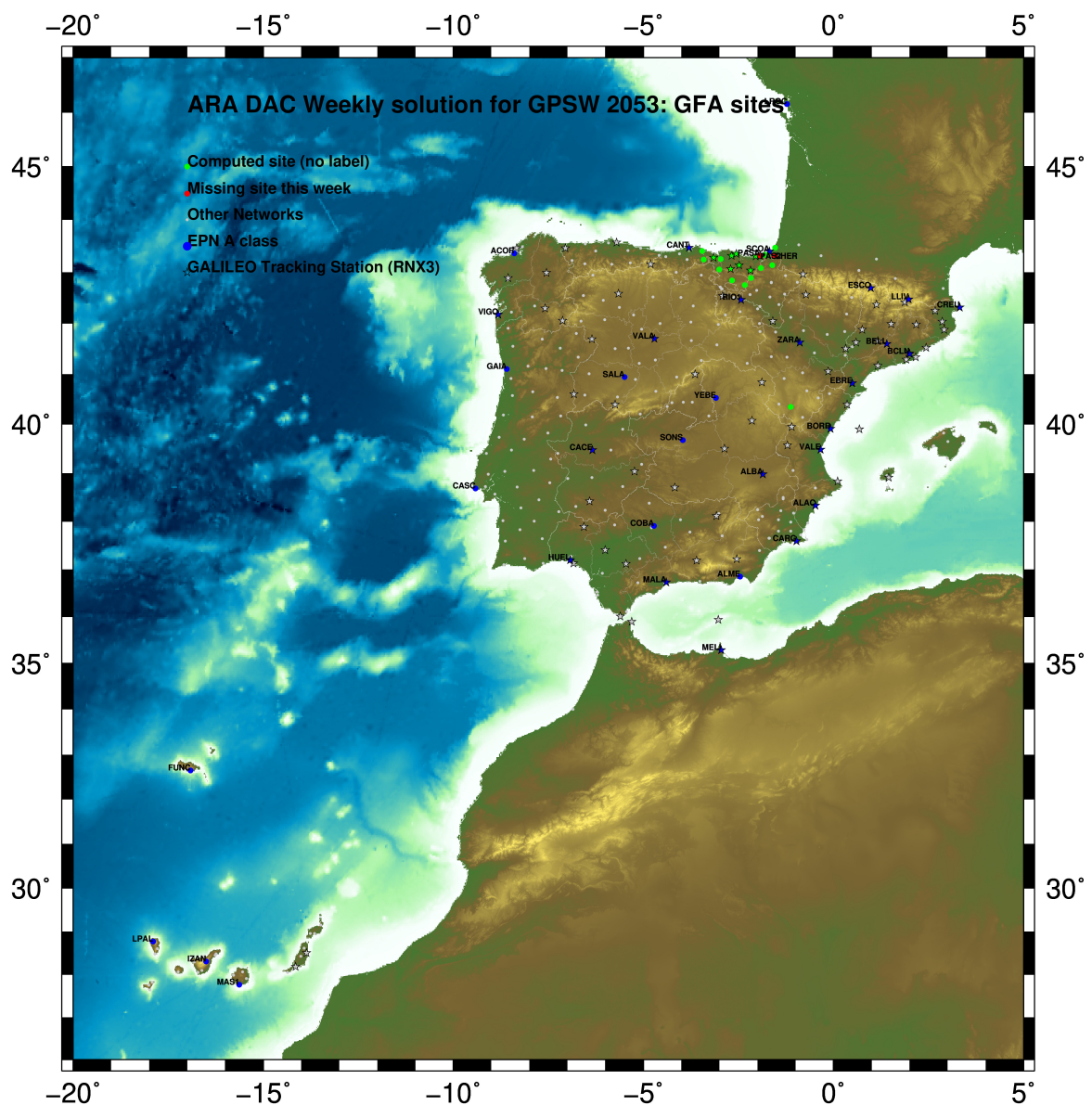
Report generated on 2019/06/02 at 21:21:46



1 Introduction

In may 2015 ARA (EUREF's acronym of the ARANZADI's Department of Applied Geodesy), kicks off as a EUREF's Operational Center. In July 2015, the Densification solutions ARA computes routinely in a weekly basis start being submitted to the EUREF's EPN Densification Project.

2 Map of Computed Sites



GM 2019 Jun 02 21:21:38

Fig.1: Computed Sites for GPS Week2053 (GFA)

3 Main Computation Parameters

The main parameters considered in the ARA analysis follow strictly the EPN recommendations.

- Preprocessing: Independent baselines are defined by the criterion of maximum common observations. Cycle slips are fixed with the MAUPRP program, analysing triple phase differences for each independent baseline. If MAUPRP does not fix all slips for one station, that station is edited out.
- Basic Observable : Carrier phase, L_1 and L_2 ; a priori sigma of single differences:0.002 m.
 - sampling (for ambiguity resolution) : 30 s
 - sampling (for final processing) : 180 s
 - Systems: GPS+GLONASS observations are used (Galileo also used if available from GPSW 1986 on)
- Modelled observable: Double differences of carrier phase using different combinations based on the distance.
- Ground antenna phase center calibrations: Group APCV used from the PCV_COD.I14 file and individual calibrations from EPNC_14.ATX. EPN_A class sites (CRD + VEL) IGS14 used to define the reference frame (from GPSW 1934). If individual calibrations, other from these, are available, they are also included in the analysis.
- Troposphere:
 - 3 deg elev. cutoff; elevation dependent weighting
 - VMF1 mapping function. ZPD parameters are estimated using the VMF1 mapping function.
 - CHENHER gradient estimation model.
- Ionosphere: no a priori model, ionospheric effect almost removed by iono free combination.
- Ocean Loading: FES2004 (Scherneck).
- Atmosph. Loading: computed from a global grid using the GRDS1S2 program of Bernese 5.2.

4 Estimated Parameters

- Adjustment: Least Squares
- Rejection Criteria: 3*rms of single differences, in the weekly combination of daily normal equations (ADDNEQ)
- Station coordinates: minimum constraints (MC) to EPN A class sites (only translations).
- Troposphere: 3 deg. After having obtained coordinates valid for the entire week, tropospheric zenith delay is solved at each site at intervals of 1 hour throughout the week, holding the coordinates constrained at the weekly values.
- Ionospheric: second and third "High Order Ionosphere (HOI)" corrections used, using CODE files, to improve Ambiguity Resolution.
- Satellite clock bias: not estimated because are eliminated by double differencing the phase data.
- Receiver clock bias: not estimated because are eliminated by double differencing the phase data.
- Orbits and ERPs: CODE's orbits and ERP for both rapid and final solutions. DE405 planetary ephemeris and JGM3 Earth geopotential model is used.
- Tidal displacements: according to IERS2010 Conventions. Atmospheric loading corrections used.

- Ambiguity: an advanced ambiguity resolution (AR) scheme is included:
 - Code-Based Widelane (WL) AR for baselines shorter than 6000km, a Melbourne-Wuebbena wide-lane and narrow-lane AR is computed.
 - Phase-Based Widelane (L_5) AR for baselines shorter than 200km, the code-based wide-lane AR is replaced by a phase-only wide-lane with a subsequent narrow-lane AR.
 - Quasi-Ionosphere-Free (QIF)AR for the remaining real-valued ambiguities for baselines shorter than 2000km.
 - Direct L_1/L_2 AR for baselines shorter than 20km
- AR Verification: Each baseline is processed by introducing the resolved integer ambiguities and checking the residuals. If there is any problem, the ambiguities are re-initialized.

5 Computed Coordinates

In this section the adjusted coordinates are summarized. Note that the sites with an A flag are the computed ones, whereas sites flagged as W are the ones used in the Minimal Constraints condition.

5.1 IGS14

The Reference Frame considered in this section is IGS14, release C2010.

```
ARA LAC 2053 WEEK FINAL COMBINATION: PRECISE ORBITS          02-JUN-19 18:16
-----
LOCAL GEODETIC DATUM: IGS14          EPOCH: 2019-05-15 12:00:00
-----
NUM STATION NAME          X (M)          Y (M)          Z (M)          FLAG
-----
 1 ACRD 13434M001          4594489.55779          -678367.44752          4357066.28223          W
33 ALDA 19383M001          4687280.15619          -190876.56728          4308106.95413          A
42 ALSA 19419M001          4677250.82868          -176770.39526          4319079.87195          A
44 AMUR 19388M001          4661499.44596          -244591.26184          4332269.88217          A
78 BIAZ 10074M002          4634456.05138          -124344.97878          4365785.45741          A
79 BIDA 00000M000          4644177.82137          -145778.32603          4354832.48144          A
89 BRZR 19387M001          4662220.99141          -220769.90206          4333309.44183          A
 9 CACE 13447M001          4899866.50368          -544567.03824          4033770.20508          W
10 CANT 13438M001          4625924.31370          -307096.23630          4365771.55640          W
15 CREU 13432M001          4715420.12877          273178.05709          4271946.84071          W
16 EBRE 13410M001          4833519.98895          41537.38778          4147461.71464          W
135 ELGE 19353S001          4657557.40373          -202241.47596          4338991.87049          A
137 EMAZ 17001M001          4645924.20607          -276949.86795          4347759.57845          A
157 GERN 19389M001          4642811.31984          -217222.92725          4353278.88140          A
177 IGEL 19352S001          4645951.42850          -165574.50575          4352550.41819          A
182 ISPS 19484M001          4640596.47935          -206963.77935          4356391.91351          A
187 KAST 19499M001          4646949.07770          -240747.27857          4348014.99089          A
192 LARE 19440M001          4632831.95073          -279026.13980          4360314.42671          A
193 LAZK 19354S001          4666098.34006          -178186.19376          4330463.67321          A
197 LEIT 19428M001          4663520.93307          -155858.72043          4334519.88361          A
253 ORDN 19427M001          4659695.77330          -130864.73593          4338948.87896          A
 30 PASA 19351S001          4644909.05813          -156645.07010          4353623.07741          W
 33 RID1 13448M002          4708446.82562          -199490.28661          4284089.73665          W
34 SALA 13469M001          4803054.48362          -462131.07224          4158379.07881          W
 35 SCDA 10088M002          4639940.49553          -136224.94270          4359552.41400          W
313 SOPU 19386M001          4643997.90662          -255913.91011          4350063.14268          A
333 TERU 13487M001          4867391.32011          -95523.35541          4108341.68059          A
366 VITO 19385M001          4679397.69885          -218436.50898          4314898.36540          A
43 YEBE 13420M001          4848724.56541          -261631.93204          4123094.32877          W
44 ZARA 13462M001          4773803.16509          -73505.98594          4215454.09467          W
```

5.2 ETRF2000 (ETRS89) Coordinates

European Terrestrial Reference System, 1989 (ETRS89) is realized by ETRF2000 (Boucher and Altamimi, 2011) and (Altamimi, 2017).

```
ETRF2000 FINAL COORD. wk 2053          02-JUN-19 18:16
-----
LOCAL GEODETIC DATUM: ETRF2000        EPOCH: 2019-05-15 12:00:00
-----
NUM STATION NAME          X (M)          Y (M)          Z (M)          FLAG
-----
 1 ACRD 13434M001          4594489.86405          -678367.98433          4357065.86614          W
33 ALDA 19383M001          4687280.51608          -190877.11266          4308106.53699          A
42 ALSA 19419M001          4677251.19098          -176770.93956          4319079.45574          A
44 AMUR 19388M001          4661499.80125          -244591.80469          4332269.46633          A
78 BIAZ 10074M002          4634456.42301          -124345.51846          4365785.04507          A
79 BIDA 00000M000          4644178.18975          -145778.86679          4354832.06811          A
89 BRZR 19387M001          4662221.34955          -220770.44492          4333309.02623          A
 9 CACE 13447M001          4899866.80326          -544567.60635          4033769.76745          W
10 CANT 13438M001          4625924.66399          -307096.77561          4365771.14250          W
15 CREU 13432M001          4715420.54027          273177.51044          4271946.42695          W
16 EBRE 13410M001          4833520.36486          41536.82805          4147461.28917          W
135 ELGE 19353S001          4657557.76443          -202242.01828          4338991.45547          A
137 EMAZ 17001M001          4645924.55865          -276950.40928          4347759.16340          A
157 GERN 19389M001          4642811.67977          -217223.46808          4353278.46731          A
177 IGEL 19352S001          4645951.79441          -165575.04676          4352550.00449          A
182 ISPS 19484M001          4640596.84069          -206964.31992          4356391.49971          A
187 KAST 19499M001          4646949.43452          -240747.81990          4348014.57620          A
192 LARE 19440M001          4632832.30393          -279026.67976          4360314.01263          A
193 LAZK 19354S001          4666098.70297          -178186.73690          4330463.25783          A
197 LEIT 19428M001          4663521.29887          -155859.26324          4334519.46869          A
253 ORDN 19427M001          4659696.14232          -130865.27826          4338948.46463          A
 30 PASA 19351S001          4644909.42516          -156645.61097          4353622.66389          W
 33 RID1 13448M002          4708447.18285          -199490.83420          4284089.31780          W
34 SALA 13469M001          4803054.80148          -462131.63026          4158378.64957          W
 35 SCDA 10088M002          4639940.86535          -136225.48299          4359552.00110          W
313 SOPU 19386M001          4643998.26181          -255914.45117          4350062.72803          A
333 TERU 13487M001          4867391.67733          -95523.91909          4108341.25091          A
366 VITO 19385M001          4679398.05599          -218437.05362          4314897.94853          A
43 YEBE 13420M001          4848724.90426          -261632.49428          4123093.89851          W
44 ZARA 13462M001          4773803.53228          -73506.53991          4215453.67237          W
```

5.3 ETRF2014 (ETRS89) Coordinates

European Terrestrial Reference System, 1989 (ETRS89) is realized by ETRF2014 (Boucher and Altamimi, 2011) and (Altamimi, 2017).

ETRF2014 FINAL COORD. wk 2053		02-JUN-19 18:16			
LOCAL GEODETIC DATUM: ETRF2014		EPOCH: 2019-05-15 12:00:00			
NUM	STATION NAME	X (M)	Y (M)	Z (M)	FLAG
1	ACOR 13434M001	4594489.82153	-678368.02293	4357065.91453	W
33	ALDA 19383M001	4687280.47137	-190877.15260	4308106.58528	A
42	ALSA 19419M001	4677251.14631	-176770.97958	4319079.50406	A
44	AMUR 19388M001	4661499.75694	-244591.84454	4332269.51466	A
78	BLAZ 10074M002	4634456.37861	-124345.55883	4365785.09352	A
79	BIDA 00000M000	4644178.14531	-145778.90705	4354832.11652	A
89	BRZR 19387M001	4662221.30517	-220770.48486	4333309.07456	A
9	CACE 13447M001	4899866.75731	-544567.64423	4033769.81518	W
10	CANT 13438M001	4625924.62021	-307096.81539	4365771.19089	W
15	CREU 13432M001	4715420.49373	273177.46903	4271946.47547	W
16	EBRE 13410M001	4833520.31792	41536.78789	4147461.33726	W
135	ELGE 19353S001	4657557.72003	-202242.05830	4338991.50382	A
137	EMAZ 17001M001	4645924.51459	-276950.44908	4347759.21175	A
157	GERN 19389M001	4642811.63556	-217223.50810	4353278.51570	A
177	IGEL 19352S001	4645951.75002	-165575.08694	4352550.05289	A
182	ISPS 19484M001	4640596.79648	-206964.35998	4356391.54811	A
187	KAST 19499M001	4646949.39034	-240747.85982	4348014.62457	A
192	LARE 19440M001	4632832.26000	-279026.71960	4360314.06101	A
193	LAZK 19354S001	4666098.65842	-178186.77696	4330463.30617	A
197	LEIT 19428M001	4663521.25428	-155859.30339	4334519.51705	A
253	ORON 19427M001	4659696.09769	-130865.31851	4338948.51302	A
30	PASA 19351S001	4644909.38075	-156645.65119	4353622.71230	W
33	RI01 13448M002	4708447.13794	-199490.87403	4284089.36604	W
34	SALA 13469M001	4803054.75634	-462131.66881	4158378.69751	W
35	SOA 10088M002	4639940.82093	-136225.52330	4359552.04953	W
313	SOPU 19386M001	4643998.21770	-255914.49105	4350062.77640	A
333	TERU 13487M001	4867391.63048	-95523.95865	4108341.29885	A
366	VITO 19385M001	4679398.01143	-218437.09349	4314897.99682	A
43	YEBE 13420M001	4848724.85810	-261632.53335	4123093.94641	W
44	ZARA 13462M001	4773803.48633	-73506.57991	4215453.72052	W

6 Quality Control

6.1 Mean and Daily Repeatabilities

In this section, the mean and daily repeatabilities of the sites are shown. Repeatabilities refer to the IGS14 solution and are given with respect the Local frame (North-East-Up).

ARA LAC 2053 WEEK FINAL COMBINATION: PRECISE ORBITS 02-JUN-19 18:16

Station	#Days	Weekday 0123456	Repeatability (mm)		
			N	E	U
ACOR 13434M001	7	XXXXXX	0.59	0.99	2.43
ALDA 19383M001	7	XXXXXX	1.09	0.70	2.99
ALSA 19419M001	7	XXXXXX	1.35	0.84	3.43
AMUR 19388M001	7	XXXXXX	1.10	0.82	2.53
BIAZ 10074M002	7	XXXXXX	0.37	0.44	3.06
BIDA 00000M000	4	X XXX	0.26	0.76	1.68
BRZR 19387M001	7	XXXXXX	1.18	1.25	5.18
CACE 13447M001	7	XXXXXX	0.69	0.57	1.46
CANT 13438M001	7	XXXXXX	0.60	0.45	2.61
CREU 13432M001	7	XXXXXX	2.00	1.58	2.41
EBRE 13410M001	7	XXXXXX	0.77	1.00	4.66
ELGE 19353S001	7	XXXXXX	0.86	0.99	2.65
EMAZ 17001M001	7	XXXXXX	0.69	0.83	2.27
GERN 19389M001	7	XXXXXX	0.99	1.73	5.22
IGEL 19352S001	7	XXXXXX	0.45	0.78	2.56
ISPS 19484M001	7	XXXXXX	0.73	1.41	4.62
KAST 19499M001	7	XXXXXX	0.77	0.89	2.32
LARE 19440M001	7	XXXXXX	0.76	1.07	1.68
LAZK 19354S001	7	XXXXXX	0.77	0.79	2.56
LEIT 19428M001	7	XXXXXX	2.10	0.82	3.32
ORDN 19427M001	7	XXXXXX	0.67	1.69	4.71
PASA 19351S001	7	XXXXXX	0.47	0.47	3.48
RI01 13448M002	7	XXXXXX	0.78	0.72	2.43
SALA 13469M001	7	XXXXXX	0.56	0.60	3.08
SCDA 10088M002	7	XXXXXX	4.42	2.84	10.03
SOPU 19386M001	7	XXXXXX	1.01	2.33	2.98
TERU 13487M001	7	XXXXXX	0.49	1.00	1.02
VITD 19385M001	7	XXXXXX	0.81	0.82	3.80
YEBE 13420M001	7	XXXXXX	0.88	1.11	2.66
ZARA 13462M001	7	XXXXXX	0.93	0.67	1.79

Comparison of individual solutions:

ACOR 13434M001	N	0.59	0.03	-0.38	1.02	0.36	-0.80	-0.36	-0.16
ACOR 13434M001	E	0.99	-0.23	1.44	0.68	-0.30	-0.51	-0.32	1.68
ACOR 13434M001	U	2.43	1.29	2.83	-0.06	-0.97	-2.44	-4.03	-1.58
ALDA 19383M001	N	1.09	1.00	-0.05	1.40	1.23	1.44	-0.53	0.55
ALDA 19383M001	E	0.70	-0.54	0.19	0.84	0.17	-0.83	0.39	-1.02
ALDA 19383M001	U	2.99	4.41	1.44	-1.14	-2.60	0.32	-3.77	-3.11
ALSA 19419M001	N	1.35	2.75	1.55	0.14	-0.78	-0.20	0.50	-0.17
ALSA 19419M001	E	0.84	-0.63	0.04	1.50	1.05	0.03	-0.57	-0.42
ALSA 19419M001	U	3.43	3.19	-1.24	-1.41	0.13	2.45	-6.43	-3.12
AMUR 19388M001	N	1.10	-0.88	-0.18	0.55	0.27	1.25	1.29	1.68
AMUR 19388M001	E	0.82	1.25	0.36	0.95	0.26	-1.12	0.13	-0.33
AMUR 19388M001	U	2.53	0.61	-3.11	-1.54	-4.41	-1.62	1.77	0.96
BIAZ 10074M002	N	0.37	-0.10	-0.06	0.64	0.37	-0.28	-0.42	-0.08
BIAZ 10074M002	E	0.44	-0.14	-0.28	-0.69	0.15	-0.30	-0.05	0.67
BIAZ 10074M002	U	3.06	-0.86	-1.11	-0.74	-3.28	-2.77	5.79	1.25
BIDA 00000M000	N	0.26	-0.12		0.16	-0.23	0.32		
BIDA 00000M000	E	0.76	0.96		0.50	-0.50	-0.55		
BIDA 00000M000	U	1.68	1.20		-1.53	-2.08	-0.62		
BRZR 19387M001	N	1.18	1.50	0.24	0.01	0.15	0.85	-2.09	-0.97
BRZR 19387M001	E	1.25	1.87	0.74	0.70	-0.31	-1.31	-1.58	-0.73
BRZR 19387M001	U	5.18	-3.48	-6.19	-5.24	-2.31	0.07	2.50	8.47
CACE 13447M001	N	0.69	-0.36	0.43	-0.02	-0.92	0.06	-0.58	-1.17
CACE 13447M001	E	0.57	-0.34	0.57	-1.08	0.31	-0.43	0.17	0.06
CACE 13447M001	U	1.46	-0.39	-0.68	1.77	-1.99	1.45	-0.01	-1.74
CANT 13438M001	N	0.60	-0.82	-0.10	0.27	0.59	0.73	0.73	0.16
CANT 13438M001	E	0.45	0.09	0.06	0.01	0.25	-0.50	0.43	0.83
CANT 13438M001	U	2.61	-1.16	1.94	-2.62	1.03	-3.33	-3.67	-1.78
CREU 13432M001	N	2.00	4.09	-0.60	0.71	-0.58	-0.97	-2.03	-1.05
CREU 13432M001	E	1.58	3.24	-0.47	-0.73	-1.38	-0.68	0.84	-0.83
CREU 13432M001	U	2.41	5.08	1.30	0.11	-1.03	-1.26	-0.94	-1.97
EBRE 13410M001	N	0.77	0.28	-0.02	0.16	-0.06	0.32	-1.01	1.53
EBRE 13410M001	E	1.00	-1.26	-0.08	-0.51	-0.25	1.00	1.71	-0.37
EBRE 13410M001	U	4.66	-1.85	-0.94	0.56	-4.81	-2.61	9.76	-0.77
ELGE 19353S001	N	0.86	0.36	1.03	-0.68	0.99	-0.40	-1.26	-0.29
ELGE 19353S001	E	0.99	0.80	0.39	-0.95	-0.37	-1.80	0.70	0.59
ELGE 19353S001	U	2.65	-4.58	-1.73	1.97	-1.13	2.56	-1.40	-2.15
EMAZ 17001M001	N	0.69	1.02	-0.31	0.61	-0.36	-0.69	-0.33	-0.77
EMAZ 17001M001	E	0.83	-1.04	0.28	-0.42	-0.52	0.40	0.07	1.55
EMAZ 17001M001	U	2.27	-2.39	3.65	-0.49	-0.58	2.83	1.68	-0.73
GERN 19389M001	N	0.99	-1.32	1.29	0.28	0.80	0.31	-0.33	-1.25
GERN 19389M001	E	1.73	0.90	0.98	1.76	1.15	-0.99	-1.86	-2.70
GERN 19389M001	U	5.22	-3.78	-5.03	-3.32	-2.55	-4.30	6.59	6.66
IGEL 19352S001	N	0.45	-0.21	-0.43	0.15	0.35	-0.75	0.42	-0.35
IGEL 19352S001	E	0.78	1.00	0.05	0.61	0.28	-0.86	-0.27	-1.19
IGEL 19352S001	U	2.56	0.66	-5.55	0.77	-0.22	-1.27	-2.00	-1.33
ISPS 19484M001	N	0.73	-0.79	0.04	0.46	0.87	0.35	-0.26	-1.19
ISPS 19484M001	E	1.41	1.57	-0.32	1.28	-0.20	-1.86	-1.88	-0.88
ISPS 19484M001	U	4.62	1.93	1.62	-1.81	1.68	1.24	-10.02	-3.66
KAST 19499M001	N	0.77	-1.26	0.81	0.60	-0.05	0.54	-0.58	0.54
KAST 19499M001	E	0.89	0.03	-0.15	0.66	-0.56	-1.68	0.16	1.06
KAST 19499M001	U	2.32	1.81	-2.97	-1.45	-3.30	-2.60	0.43	-0.43
LARE 19440M001	N	0.76	0.45	-0.82	0.92	0.62	-0.67	-0.67	-0.70
LARE 19440M001	E	1.07	1.95	0.91	0.06	-0.24	-0.41	-1.26	-0.69
LARE 19440M001	U	1.68	1.33	-0.21	-1.60	-0.02	2.07	2.86	-0.23
LAZK 19354S001	N	0.77	0.77	0.22	-1.01	-1.06	-0.22	0.22	0.83
LAZK 19354S001	E	0.79	0.11	-0.60	0.82	0.70	-0.80	0.33	-1.21
LAZK 19354S001	U	2.56	-1.62	-1.81	-0.92	-2.19	2.19	-4.32	2.11
LEIT 19428M001	N	2.10	4.24	0.04	-1.31	1.88	-1.67	-0.39	-0.46
LEIT 19428M001	E	0.82	0.94	0.82	-0.27	0.76	0.47	-0.94	-0.84
LEIT 19428M001	U	3.32	2.91	-3.92	3.04	-1.56	-1.75	-0.57	-5.22
ORDN 19427M001	N	0.67	0.37	-0.17	0.60	1.10	0.19	0.29	0.91

ORDN 19427M001	E	1.69	-0.43	1.08	0.74	3.10	-2.16	-0.85	-0.40
ORDN 19427M001	U	4.71	-6.39	-4.51	8.07	-1.71	1.31	0.02	1.39
PASA 19351S001	N	0.47	0.44	-0.32	-0.22	0.53	-0.45	-0.53	0.45
PASA 19351S001	E	0.47	0.08	-0.56	0.27	-0.01	-0.88	-0.04	-0.38
PASA 19351S001	U	3.48	-3.51	-4.94	0.70	-1.58	-2.15	-2.12	4.87
RIO1 13448M002	N	0.78	0.13	0.47	1.29	0.77	-0.13	0.35	0.98
RIO1 13448M002	E	0.72	0.73	-0.20	1.03	-0.03	-0.65	0.61	-0.84
RIO1 13448M002	U	2.43	-0.91	-1.99	0.25	3.63	-3.05	-1.72	-2.26
SALA 13469M001	N	0.56	-0.56	-0.67	-0.27	0.29	0.64	0.46	-0.59
SALA 13469M001	E	0.60	-0.24	0.87	-0.05	0.30	-0.25	-0.61	0.89
SALA 13469M001	U	3.08	-1.25	-0.57	-1.28	5.42	3.08	-0.61	-3.75
SCDA 10088M002	N	4.42	-0.48	-0.44	0.37	0.24	0.42	-10.77	0.64
SCDA 10088M002	E	2.84	0.56	-0.82	1.65	0.22	-1.02	6.53	-1.05
SCDA 10088M002	U	10.03	3.15	0.21	1.90	0.87	-4.58	23.03	-6.10
SOPU 19386M001	N	1.01	0.26	0.94	0.30	0.20	1.02	-1.44	-1.39
SOPU 19386M001	E	2.33	1.76	1.82	1.05	1.24	-0.24	-1.64	-4.57
SOPU 19386M001	U	2.98	0.27	-4.67	0.83	-2.64	-3.28	-0.02	3.61
TERU 13487M001	N	0.49	0.69	0.21	0.21	-0.07	-0.82	0.21	0.36
TERU 13487M001	E	1.00	-0.48	0.62	0.67	-0.72	1.39	-1.53	0.42
TERU 13487M001	U	1.02	0.10	-0.06	-0.61	0.01	-1.21	1.93	-0.79
VITO 19385M001	N	0.81	0.19	0.48	0.66	0.80	1.60	0.15	-0.09
VITO 19385M001	E	0.82	-0.62	0.31	0.86	-0.53	-0.74	1.01	0.96
VITO 19385M001	U	3.80	1.42	-6.85	-1.66	-4.19	4.06	0.96	0.01
YEBE 13420M001	N	0.88	0.36	-0.21	0.01	-0.56	-0.49	0.21	-1.97
YEBE 13420M001	E	1.11	-1.01	-0.57	-0.79	0.76	1.09	-1.76	0.73
YEBE 13420M001	U	2.66	-0.31	-0.42	-0.21	3.92	2.59	-4.30	1.22
ZARA 13462M001	N	0.93	-0.15	0.48	1.25	1.18	0.94	-1.04	0.11
ZARA 13462M001	E	0.67	0.43	0.21	0.65	1.02	-0.02	-0.59	-0.80
ZARA 13462M001	U	1.79	-1.92	-2.53	-2.65	0.15	0.26	1.22	-0.77

6.2 Datum verification

In this section, the datum verification is shown. A 3 parameter Helmert 3D (3 translations) is computed to the minimally constrained sites.

LOCAL GEODETIC DATUM: IGS14
RESIDUALS IN LOCAL SYSTEM (NORTH, EAST, UP)

NUM	NAME	FLG	RESIDUALS IN MILLIMETERS		
1	ACOR 13434M001	I W	-1.28	-0.50	1.69
2	ALAC 13433M001	I W	0.09	0.11	0.42
3	ALBA 13452M001	I W	0.31	-1.06	-0.34
4	ALME 13437M001	I W	-1.77	-0.12	1.03
5	BCLN 13412M001	I W	0.21	0.47	0.75
6	BELL 13431M001	I W	1.05	2.06	-1.50
7	BORR 13480M001	I W	-0.46	-1.15	-0.06
8	BRST 10004M004	I W	-0.55	0.54	0.54
9	CACE 13447M001	I W	0.39	0.64	-0.78
10	CANT 13438M001	I W	0.16	0.38	-1.11
11	CARG 19412M001	I W	1.15	-0.07	0.26
12	CASC 13909S001	I W	1.37	-2.10	-0.65
14	COBA 13453M001	I W	1.34	0.49	-4.02
15	CREU 13432M001	I W	-0.81	1.22	0.86
16	EBRE 13410M001	I W	0.31	1.24	-0.73
17	ESCO 13435M001	I W	0.56	-1.04	-0.50
18	FUNC 13911S001	I W	1.14	-0.95	-2.84
19	GAI A 13902M001	I W	0.13	-0.49	3.13
21	HUEL 13451M001	I W	1.30	-1.98	-0.98
22	IZAN 31309M002	I W	-1.71	-0.32	-2.29
23	LLIV 13436M001	I W	-1.08	-0.52	2.48
24	LPAL 81701M001	I W	-2.06	-0.79	-5.43
25	LROC 10023M001	I W	0.85	-0.71	4.43
26	MALA 13443M001	I W	-0.22	-1.76	0.63
27	MAS1 31303M002	I W	-0.14	-0.89	1.12
29	MELI 19379M001	I W	0.56	0.75	-1.06
30	PASA 19351S001	I W	-0.06	0.11	0.12
31	PDEL 31906M004	I W	-0.22	-0.63	-3.88
33	RIO1 13448M002	I W	-0.27	0.86	-1.98
34	SALA 13469M001	I W	0.46	0.74	-3.44
35	SCOA 10088M002	I W	-3.41	-0.38	0.29
38	SONS 13446M001	I W	0.26	0.86	-3.34
40	VALA 13463M002	I W	-0.71	0.26	-0.26
41	VALE 13439M001	I W	-0.05	1.16	-1.10
42	VIGO 13450M001	I W	-0.08	1.02	6.49
43	YEBE 13420M001	I W	0.69	-0.40	4.10
44	ZARA 13462M001	I W	0.36	0.68	2.01
45	ZIMM 14001M004	I W	2.19	2.27	5.93
	RMS / COMPONENT		1.08	1.02	2.60
	MEAN		0.00	-0.00	0.00
	MIN		-3.41	-2.10	-5.43
	MAX		2.19	2.27	6.49

NUMBER OF PARAMETERS : 3
NUMBER OF COORDINATES : 114
RMS OF TRANSFORMATION : 1.73 MM

BARYCENTER COORDINATES:

LATITUDE : 39 53 17.56
LONGITUDE : - 4 51 17.75
HEIGHT : -44.890 KM

PARAMETERS:

TRANSLATION IN N : -0.00 +- 0.28 MM
TRANSLATION IN E : -0.00 +- 0.28 MM
TRANSLATION IN U : -0.00 +- 0.28 MM

6.3 Adjustment Statistics

In this section, the summary of the global adjustment and not subnetworks are shown. Also, the Helmert parameters of the combined solution with respect the daily solutions are shown.

```
* STATISTICAL PARAMETER-----VALUE(S)-----
NUMBER OF OBSERVATIONS          17552316
NUMBER OF UNKNOWN               203974
NUMBER OF DEGREES OF FREEDOM    17348342
PHASE MEASUREMENTS SIGMA        0.00100
SAMPLING INTERVAL (SECONDS)      180
VARIANCE FACTOR                  1.969438576539189

Helmert Transformation Parameters With Respect to Combined Solution:
-----
Sol  Rms (m)      Translation (m)      Rotation (")      Scale (ppm)
      X          Y          Z          X          Y          Z
-----
 1  0.00199    -0.0140 -0.0223  0.0039  0.0005 -0.0004 -0.0006  0.00114
 2  0.00177    -0.0061 -0.0018  0.0091  0.0000 -0.0004 -0.0000 -0.00012
 3  0.00174    -0.0185 -0.0132  0.0123  0.0002 -0.0007 -0.0004  0.00093
 4  0.00164    -0.0013 -0.0010  0.0117 -0.0000 -0.0003 -0.0000 -0.00095
 5  0.00210    -0.0009 -0.0120  0.0068  0.0002 -0.0002 -0.0003 -0.00076
 6  0.00256     0.0131  0.0163 -0.0123 -0.0003  0.0006  0.0005 -0.00019
 7  0.00218    -0.0023  0.0039  0.0093 -0.0000 -0.0003  0.0001 -0.00078
```

```
Statistics of individual solutions:
-----
File  RMS (m)      DOF  Ch1**2/DOF  #Observations authentic / pseudo  #Parameters explicit / implicit / singular
-----
 1  0.00138    2504967    1.91          2535958      3          972      30022      0
 2  0.00136    2483471    1.84          2514341      3          975      29898      0
 3  0.00141    2490028    1.99          2520353      3          972      29356      0
 4  0.00136    2470804    1.85          2498767      3          978      26988      0
 5  0.00146    2461802    2.14          2492252      3          984      29469      0
 6  0.00146    2453716    2.12          2484282      3          984      29585      0
 7  0.00137    2477725    1.88          2506363      3          978      27663      0
```

7 Equipment

7.1 Receiver List

Serial numbers not shown.

```
*SITE PT SOLN T DATA_START__ DATA_END___ DESCRIPTION_____ S/N__ FIRMWARE___
ACOR  A  1 P 19:132:00000 19:138:86370 LEICA GR10      -----
ALDA  A  1 P 19:132:00000 19:138:86370 LEICA GR10      -----
ALSA  A  1 P 19:132:00000 19:138:86370 LEICA GR50      -----
AMUR  A  1 P 19:132:00000 19:138:86370 LEICA GR10      -----
BIAZ  A  1 P 19:132:00000 19:138:75570 TRI SP90M     -----
BIDA  A  1 P 19:132:00000 19:136:86370 LEICA GR10      -----
BRZR  A  1 P 19:132:00000 19:138:86370 LEICA GR30      -----
CACE  A  1 P 19:132:00000 19:138:86370 TRIMBLE NETR9  -----
CANT  A  1 P 19:132:00000 19:138:86370 LEICA GR10      -----
CREU  A  1 P 19:132:00000 19:138:86370 LEICA GR50      -----
EBRE  A  1 P 19:132:00000 19:138:86370 LEICA GR50      -----
ELGE  A  1 P 19:132:00000 19:138:86370 LEICA GR10      -----
EMAZ  A  1 P 19:132:00000 19:138:86370 LEICA GR30      -----
GERN  A  1 P 19:132:00000 19:138:86370 LEICA GR30      -----
IGEL  A  1 P 19:132:00000 19:138:86370 LEICA GR30      -----
ISPS  A  1 P 19:132:00000 19:138:86370 TRIMBLE NETR9  -----
KAST  A  1 P 19:132:00000 19:138:86370 LEICA GR30      -----
LARE  A  1 P 19:132:00000 19:138:86370 LEICA GRX1200GGPRO -----
LAZK  A  1 P 19:132:00000 19:138:86370 LEICA GR10      -----
LEIT  A  1 P 19:132:00000 19:138:86370 LEICA GR50      -----
ORON  A  1 P 19:132:00000 19:138:86370 LEICA GR50      -----
PASA  A  1 P 19:132:00000 19:138:86370 LEICA GR10      -----
RIO1  A  1 P 19:132:00000 19:138:86370 LEICA GR25      -----
SALA  A  1 P 19:132:00000 19:138:86370 LEICA GRX1200+GNSS -----
SCOA  A  1 P 19:132:00000 19:138:86370 LEICA GR25      -----
SOPU  A  1 P 19:132:00000 19:138:86370 LEICA GR30      -----
TERU  A  1 P 19:132:00000 19:138:86370 LEICA GRX1200GGPRO -----
VITO  A  1 P 19:132:00000 19:138:86370 LEICA GR10      -----
YEBE  A  1 P 19:132:00000 19:138:86370 TRIMBLE NETR9  -----
ZARA  A  1 P 19:132:00000 19:138:86370 TRIMBLE NETR9  -----
```

7.2 Antennas

Serial number ONLY provided in case individual calibrations are available.

```
*SITE PT SOLN T DATA_START__ DATA_END___ DESCRIPTION_____ S/N__
ACOR  A  1 P 19:132:00000 19:138:86370 LEIAT504      LEIS -----
ALDA  A  1 P 19:132:00000 19:138:86370 LEIAS10       NONE -----
ALSA  A  1 P 19:132:00000 19:138:86370 LEIAS10       NONE -----
AMUR  A  1 P 19:132:00000 19:138:86370 LEIAS10       NONE -----
BIAZ  A  1 P 19:132:00000 19:138:75570 LEIAR25       LEIT -----
BIDA  A  1 P 19:132:00000 19:136:86370 LEIAS10       NONE -----
```

```

BRZR A 1 P 19:132:00000 19:138:86370 LEIAS10 NONE -----
CACE A 1 P 19:132:00000 19:138:86370 TRM29659.00 NONE -----
CANT A 1 P 19:132:00000 19:138:86370 LEIAR25_R4 LEIT 25066
CREU A 1 P 19:132:00000 19:138:86370 LEIAR25_R4 NONE 26357
EBRE A 1 P 19:132:00000 19:138:86370 LEIAR25_R4 NONE 26359
ELGE A 1 P 19:132:00000 19:138:86370 LEIAR25_R4 LEIT -----
EMAZ A 1 P 19:132:00000 19:138:86370 LEIAS10 NONE -----
GERN A 1 P 19:132:00000 19:138:86370 LEIAS10 NONE -----
IGEL A 1 P 19:132:00000 19:138:86370 LEIAR20 LEIM -----
ISPS A 1 P 19:132:00000 19:138:86370 TRM59900.00 SCIS -----
KAST A 1 P 19:132:00000 19:138:86370 LEIAS10 NONE -----
LARE A 1 P 19:132:00000 19:138:86370 LEIAT504 NONE -----
LAZK A 1 P 19:132:00000 19:138:86370 LEIAR25_R4 LEIT -----
LEIT A 1 P 19:132:00000 19:138:86370 LEIAR10 NONE -----
ORDN A 1 P 19:132:00000 19:138:86370 LEIAR10 NONE -----
PASA A 1 P 19:132:00000 19:138:86370 LEIAR20 LEIM 73034
RID1 A 1 P 19:132:00000 19:138:86370 LEIAR25_R4 LEIT 25138
SALA A 1 P 19:132:00000 19:138:86370 LEIAR25 NONE -----
SCOA A 1 P 19:132:00000 19:138:86370 TRM55971.00 NONE -----
SOPU A 1 P 19:132:00000 19:138:86370 LEIAS10 NONE -----
TERU A 1 P 19:132:00000 19:138:86370 LEIAT504GG LEIS -----
VITO A 1 P 19:132:00000 19:138:86370 LEIAS10 NONE -----
YEBE A 1 P 19:132:00000 19:138:86370 TRM29659.00 NONE -----
ZARA A 1 P 19:132:00000 19:138:86370 TRM29659.00 NONE -----

```

7.3 Eccentricities

```

*
*SITE PT SOLN T DATA_START_ DATA_END_ AXE ARP->BENCHMARK(M) UP_ NORTH_ EAST_
*-----*-----*-----*-----*-----*-----*-----*-----*
ACOR A 1 P 19:132:00000 19:138:86370 UNE 3.0460 0.0000 0.0000
ALDA A 1 P 19:132:00000 19:138:86370 UNE 0.0000 0.0000 0.0000
ALSA A 1 P 19:132:00000 19:138:86370 UNE 0.0000 0.0000 0.0000
AMUR A 1 P 19:132:00000 19:138:86370 UNE 0.0000 0.0000 0.0000
BIAZ A 1 P 19:132:00000 19:138:75570 UNE 0.0000 0.0000 0.0000
BIDA A 1 P 19:132:00000 19:138:86370 UNE 0.0000 0.0000 0.0000
BRZR A 1 P 19:132:00000 19:138:86370 UNE 0.0771 0.0000 0.0000
CACE A 1 P 19:132:00000 19:138:86370 UNE 0.0600 0.0000 0.0000
CANT A 1 P 19:132:00000 19:138:86370 UNE 3.0490 0.0000 0.0000
CREU A 1 P 19:132:00000 19:138:86370 UNE 0.0770 0.0000 0.0000
EBRE A 1 P 19:132:00000 19:138:86370 UNE 0.0770 0.0000 0.0000
ELGE A 1 P 19:132:00000 19:138:86370 UNE 0.0000 0.0000 0.0000
EMAZ A 1 P 19:132:00000 19:138:86370 UNE 0.0350 0.0000 0.0000
GERN A 1 P 19:132:00000 19:138:86370 UNE 0.0771 0.0000 0.0000
IGEL A 1 P 19:132:00000 19:138:86370 UNE 0.0000 0.0000 0.0000
ISPS A 1 P 19:132:00000 19:138:86370 UNE 0.0350 0.0000 0.0000
KAST A 1 P 19:132:00000 19:138:86370 UNE 0.0350 0.0000 0.0000
LARE A 1 P 19:132:00000 19:138:86370 UNE 0.0000 0.0000 0.0000
LAZK A 1 P 19:132:00000 19:138:86370 UNE 0.0000 0.0000 0.0000
LEIT A 1 P 19:132:00000 19:138:86370 UNE 0.0000 0.0000 0.0000
ORDN A 1 P 19:132:00000 19:138:86370 UNE 0.0000 0.0000 0.0000
PASA A 1 P 19:132:00000 19:138:86370 UNE 0.0000 0.0000 0.0000
RID1 A 1 P 19:132:00000 19:138:86370 UNE 0.0606 0.0000 0.0000
SALA A 1 P 19:132:00000 19:138:86370 UNE 0.0600 0.0000 0.0000
SCOA A 1 P 19:132:00000 19:138:86370 UNE 0.0000 0.0000 0.0000
SOPU A 1 P 19:132:00000 19:138:86370 UNE 0.0771 0.0000 0.0000
TERU A 1 P 19:132:00000 19:138:86370 UNE 0.0600 0.0000 0.0000
VITO A 1 P 19:132:00000 19:138:86370 UNE 0.0000 0.0000 0.0000
YEBE A 1 P 19:132:00000 19:138:86370 UNE 0.0000 0.0000 0.0000
ZARA A 1 P 19:132:00000 19:138:86370 UNE 3.2590 0.0000 0.0000

```

8 References

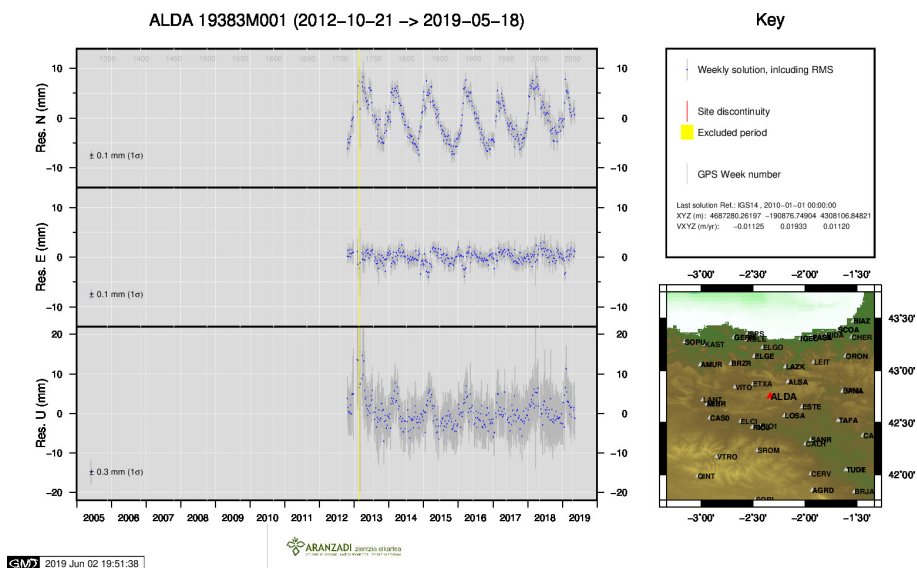
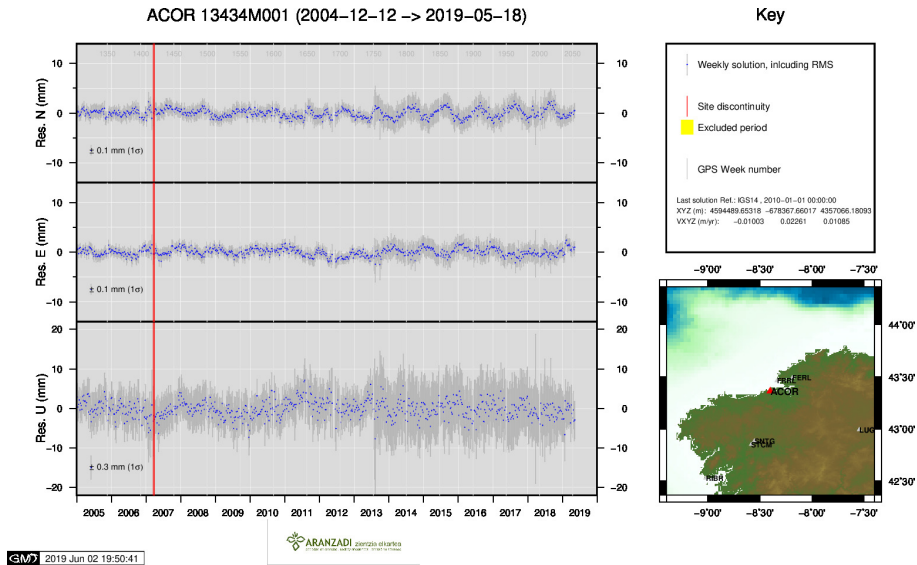
C. Boucher and Z. Altamimi (2011): *Specifications for reference frame fixing in the analysis of a EUREF GPS campaign*. etrs89.ensg.ign.fr/memo-V8.pdf

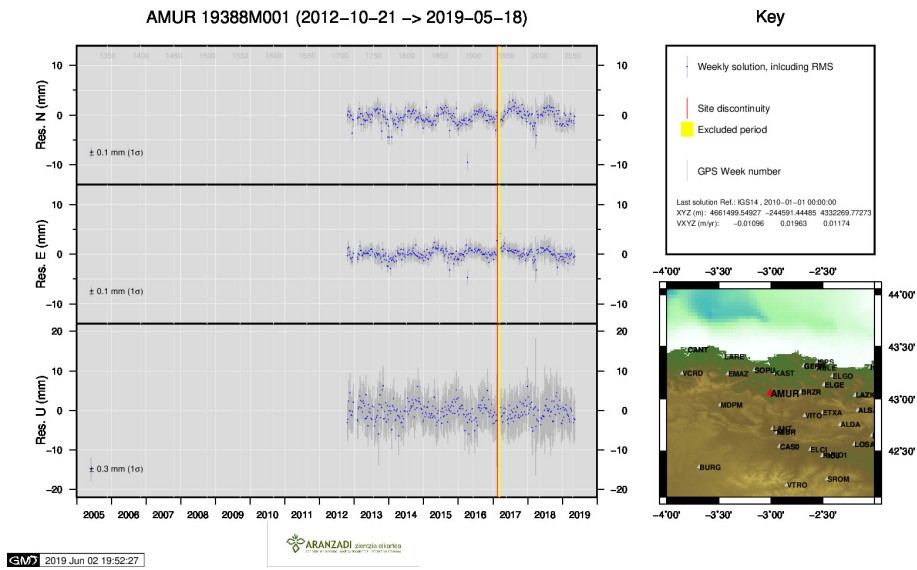
EPN Coordination Group and the EPN Central Bureau (2018): *Guidelines for the EPN Analysis Centres*. epncb.oma.be/documentation/guidelines/guidelines_analysis_centres.pdf

Z. Altamimi (2018): *EUREF Technical Note 1: Relationship and Transformation between the International and the European Terrestrial Reference Systems*. etrs89.ensg.ign.fr/pub/EUREF-TN-1.pdf

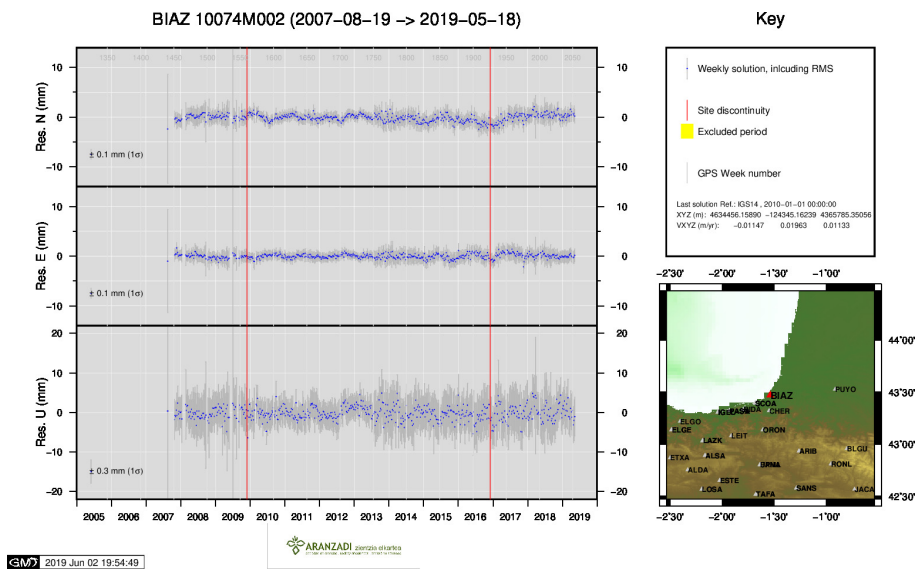
9 Cumulative Time Series

Time series of stations. Latest plots at: <http://geolabpasaia.org/gnss/ARA-net/TSeries/>, or click on the caption of each image.

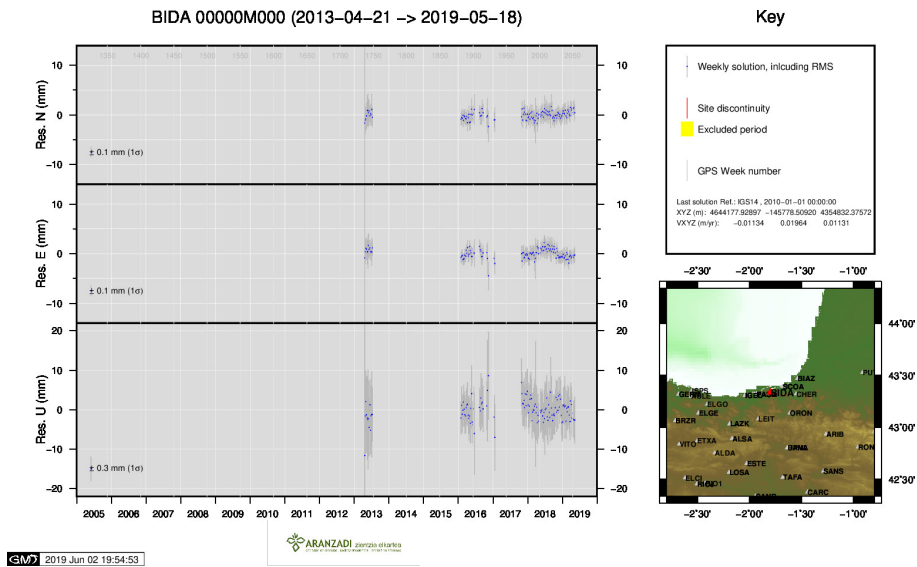




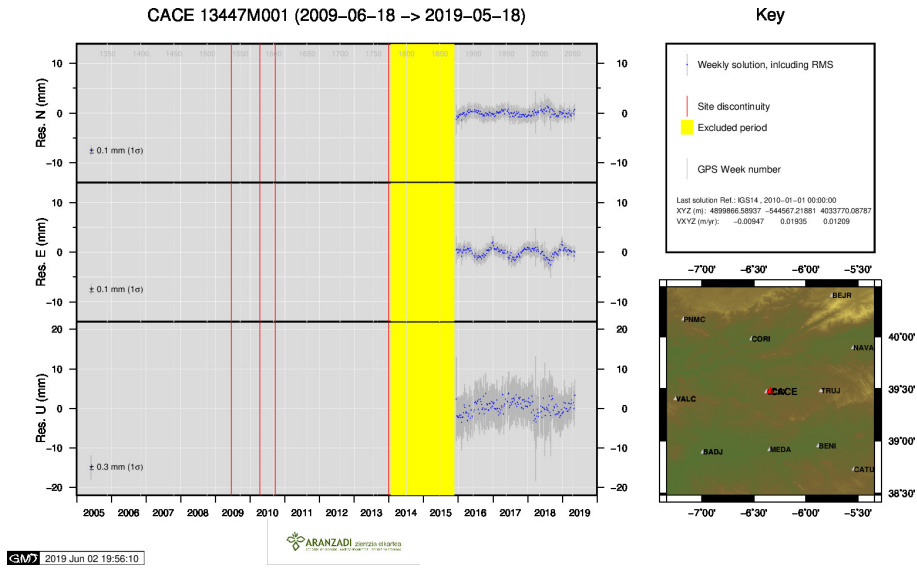
3) AMUR



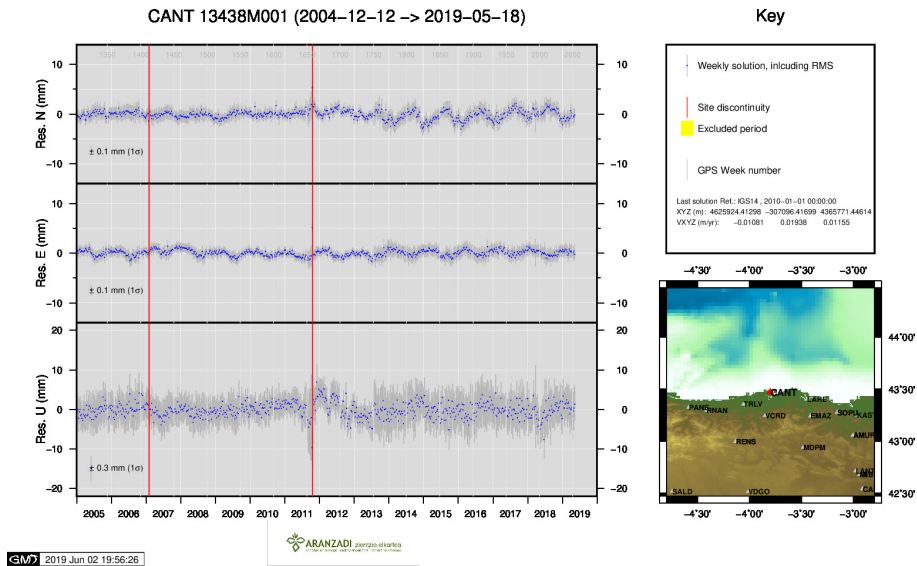
4) BIAZ



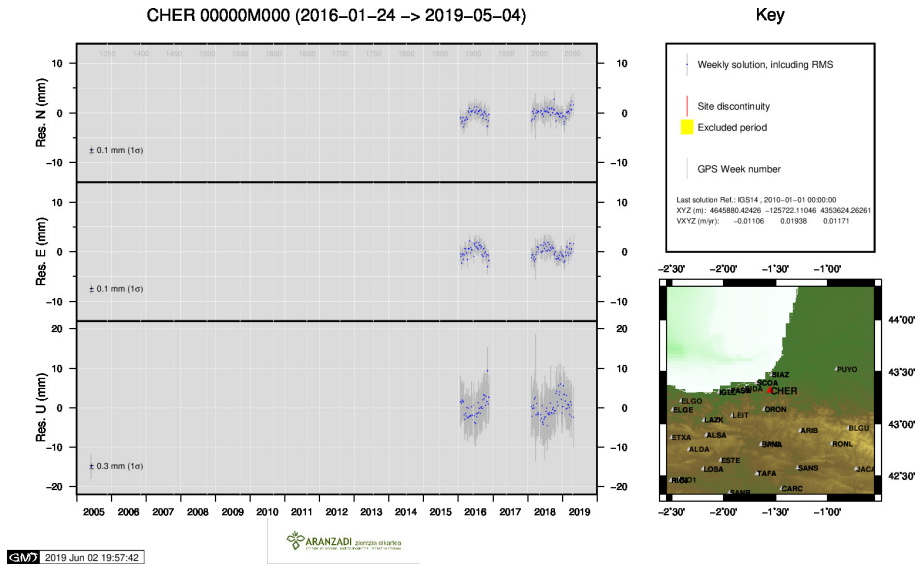
5) BIDA



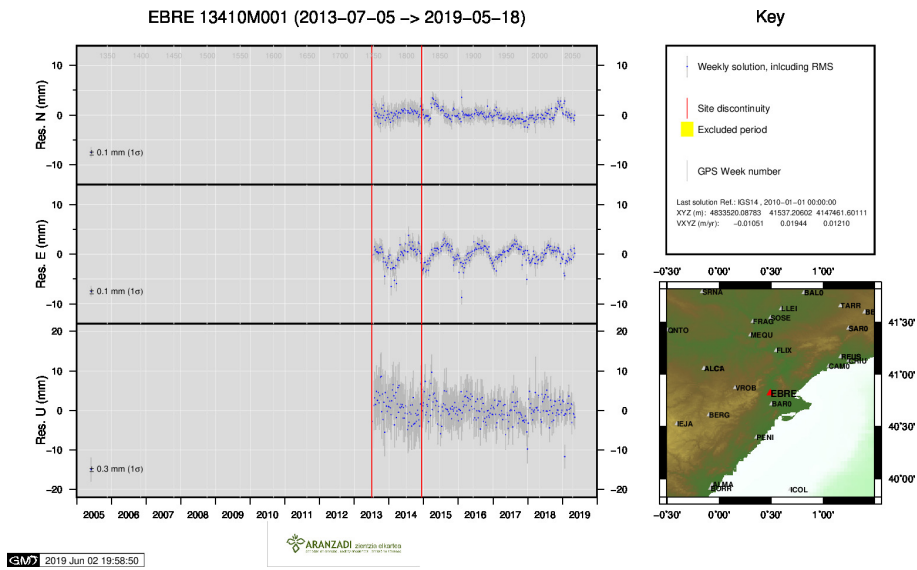
6) CACE



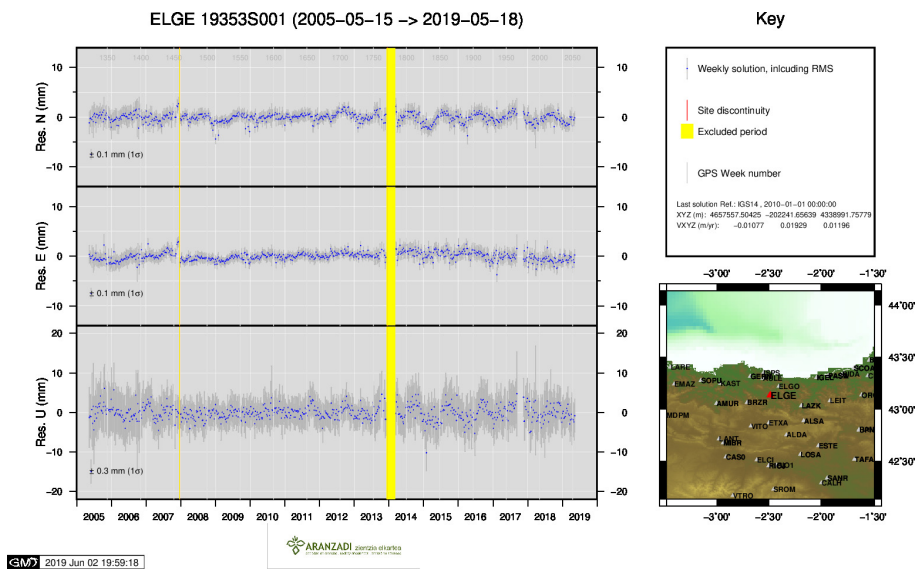
7) CANT



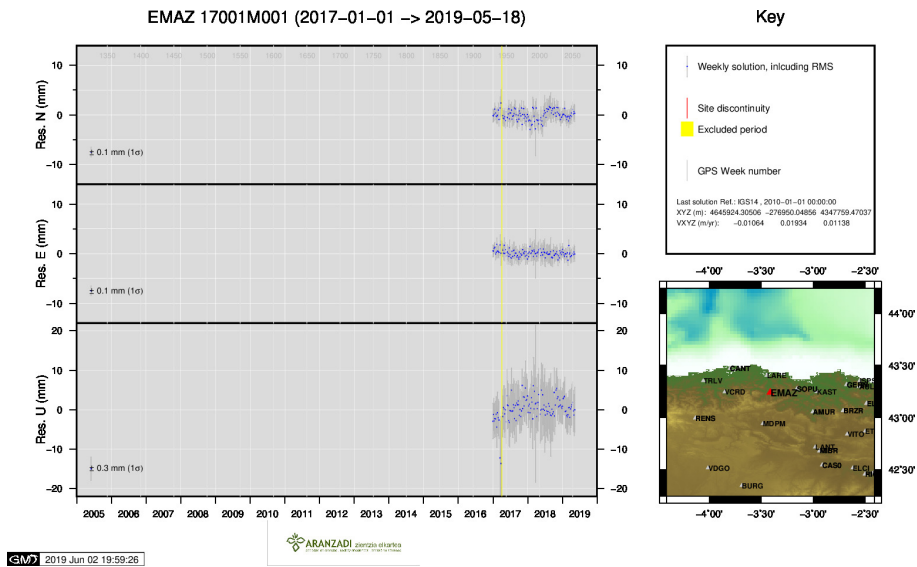
8) CHER



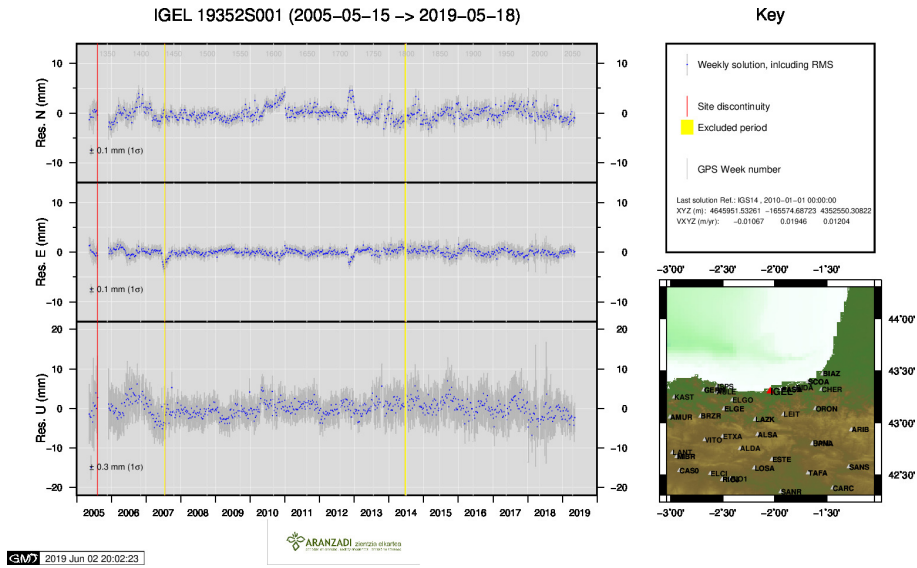
9) EBRE



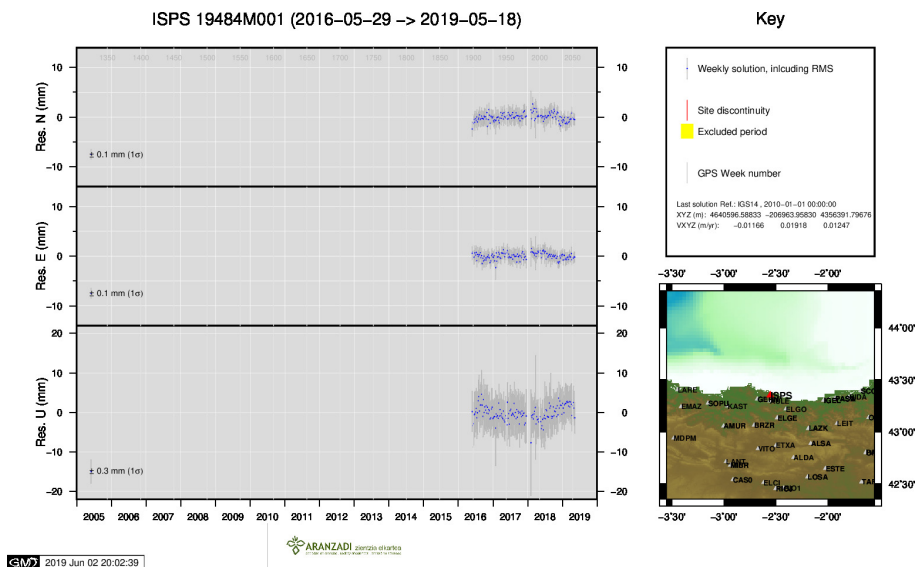
10) ELGE



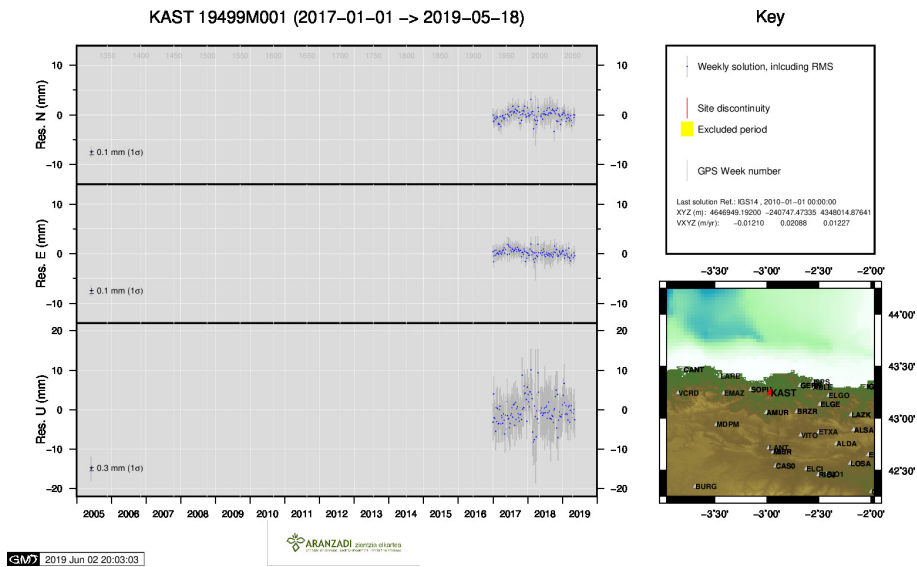
11) EMAZ



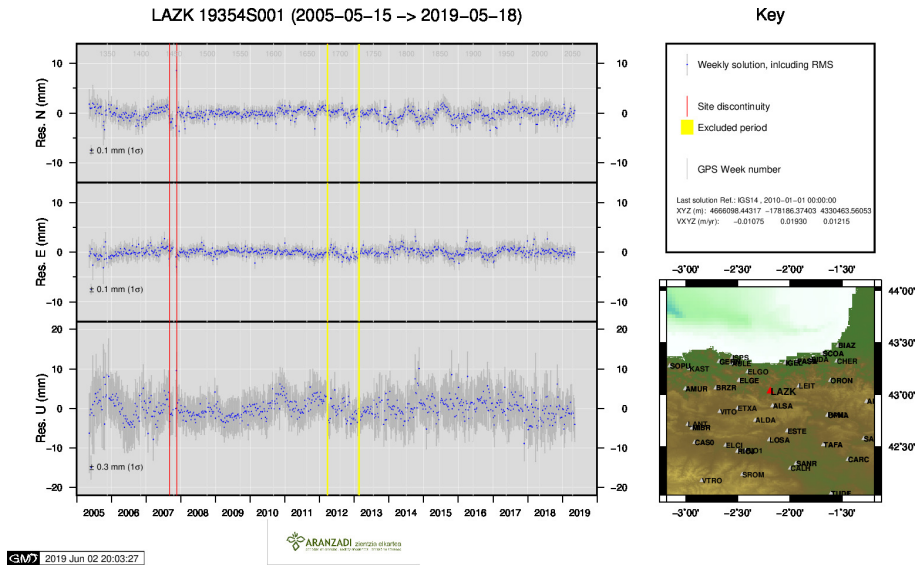
12) IGEL



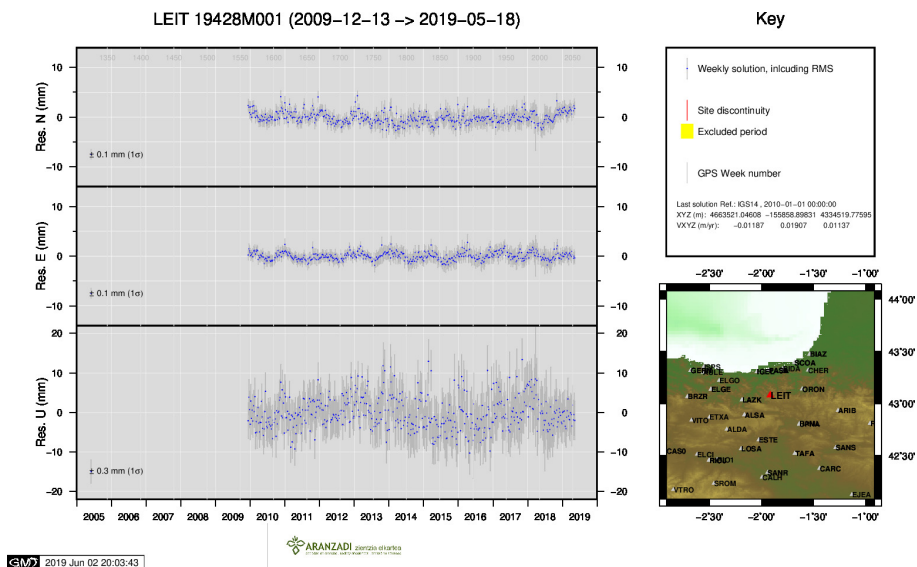
13) ISPS



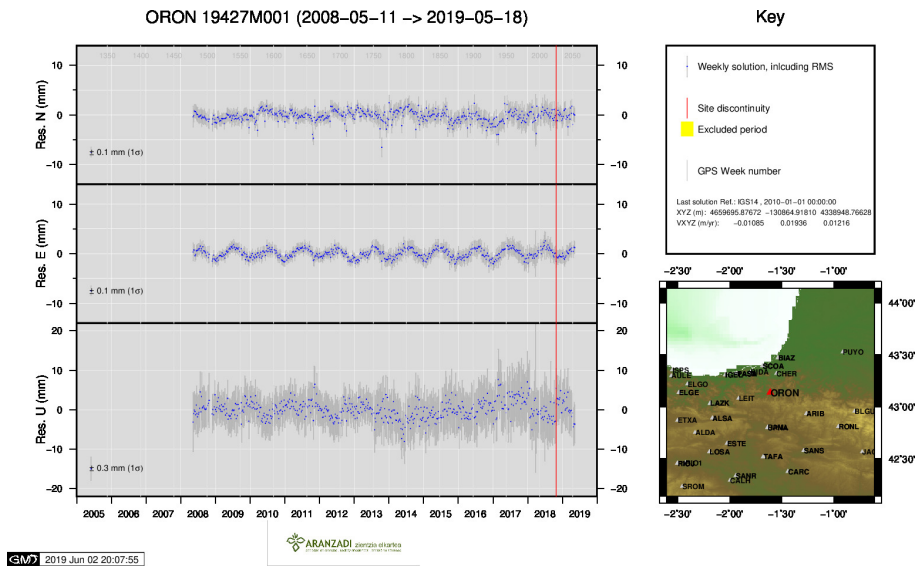
14) KAST



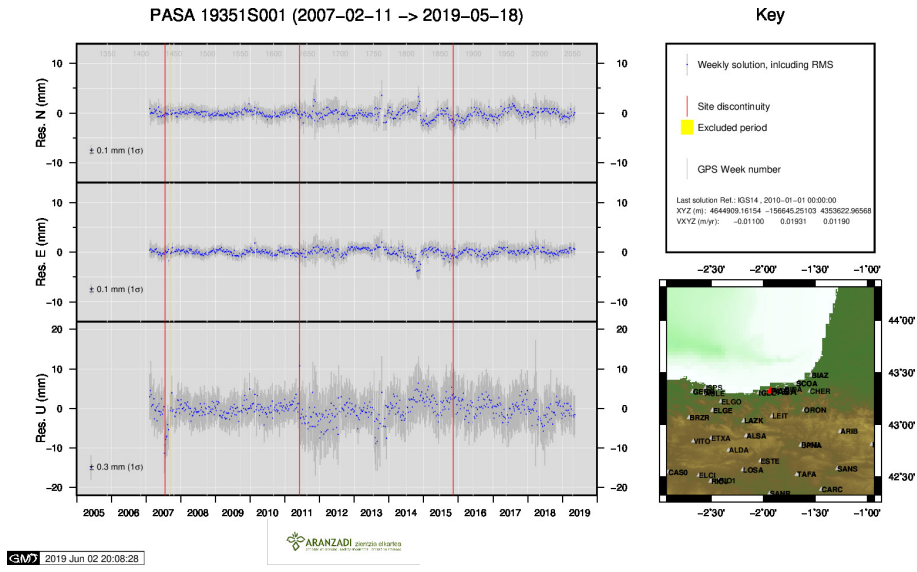
15) LAZK



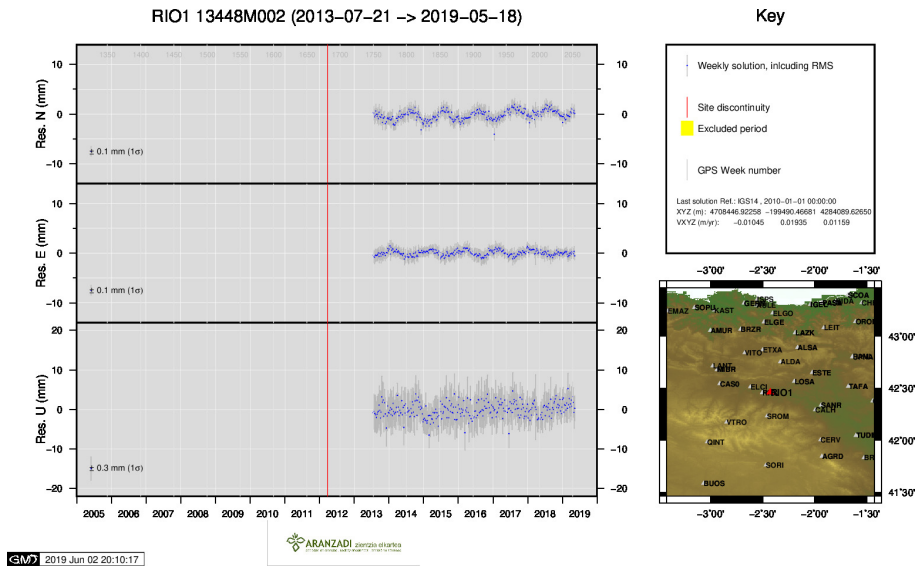
16) LEIT



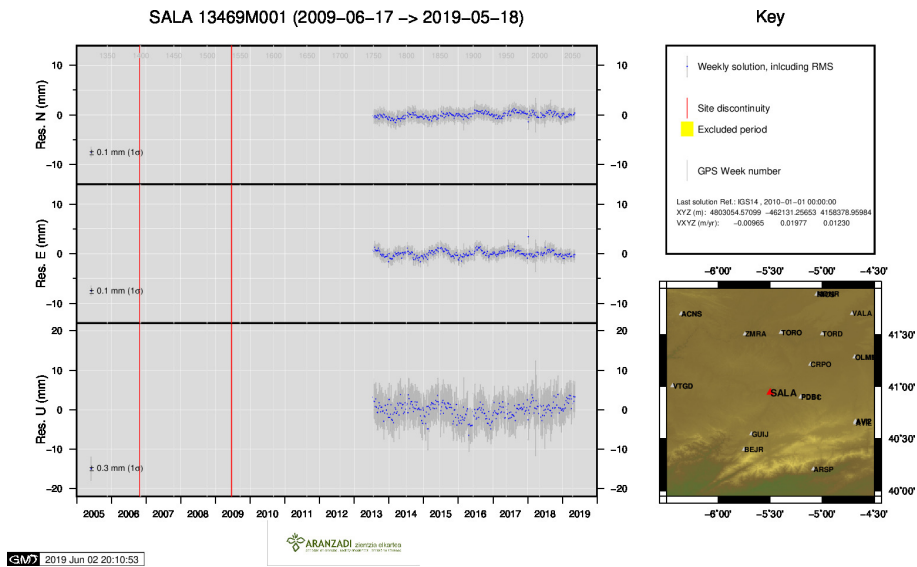
17) ORON



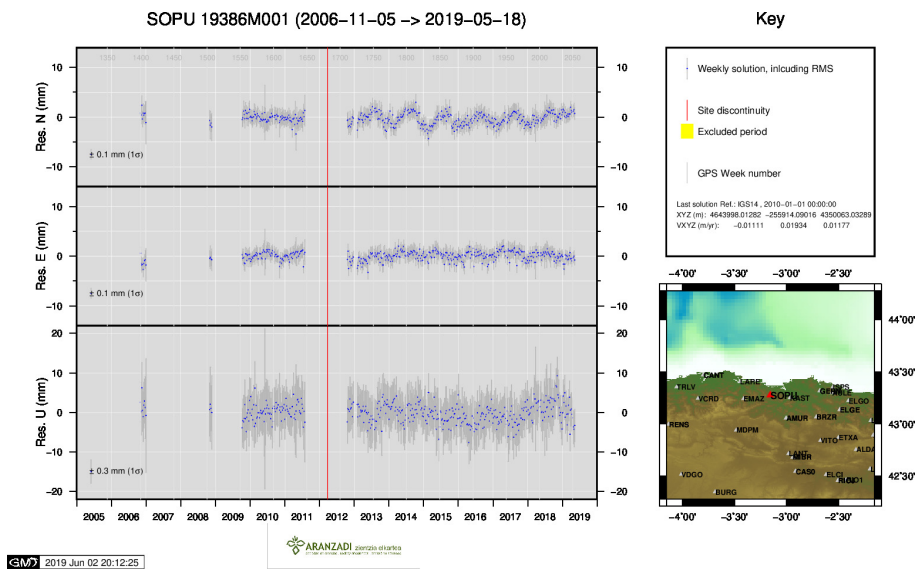
18) PASA



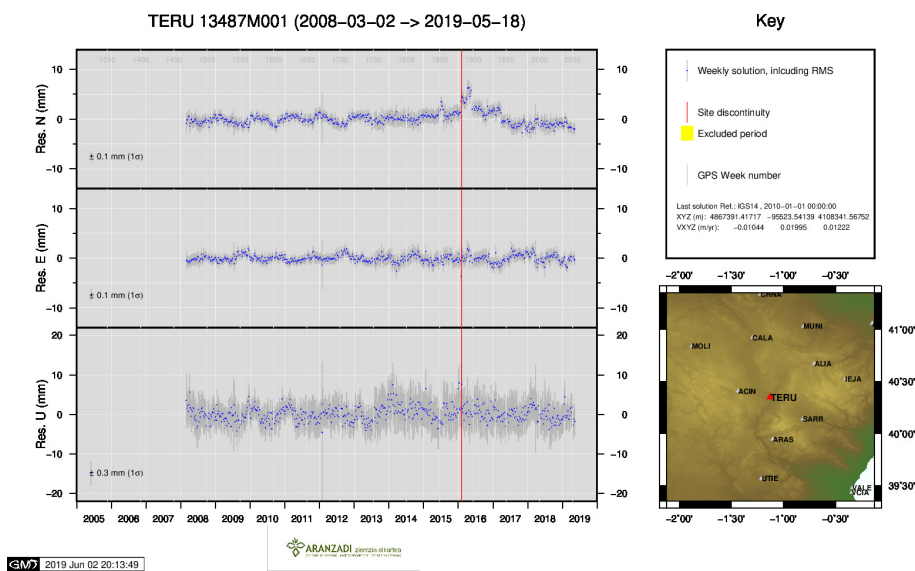
19) RIO1



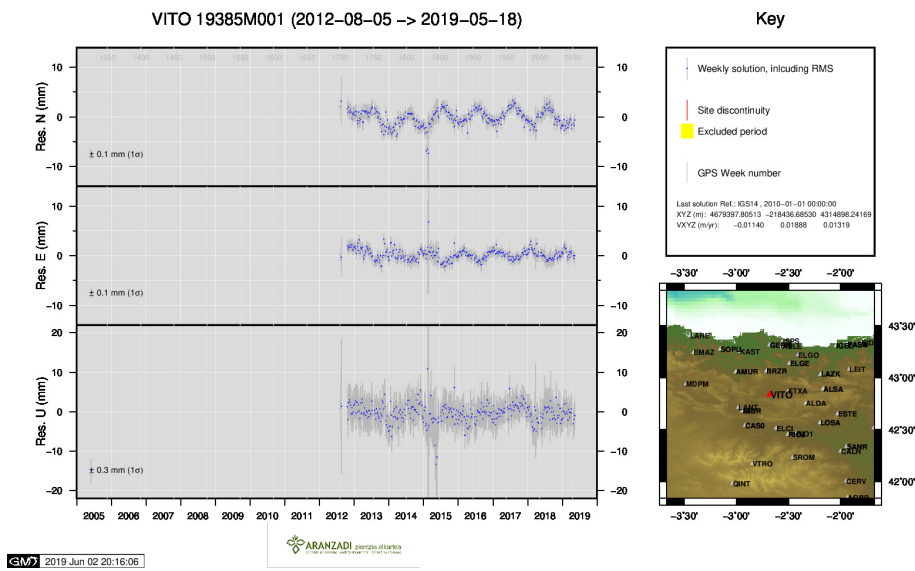
20) SALA



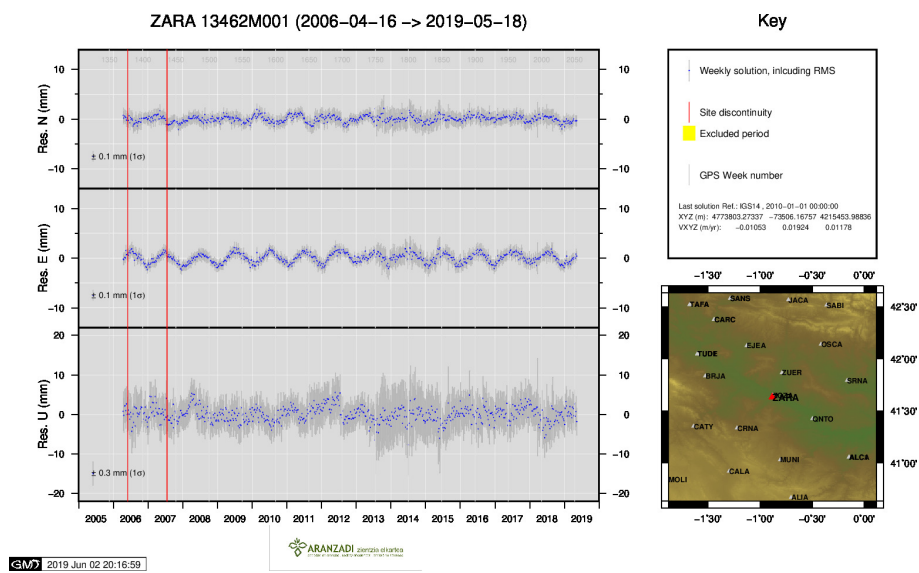
21) SOPU



22) TERU



23) VITO



24) ZARA