

ARA-DAC Weekly Analysis Result: 2037 (GFA)

Technical Report

GPS Week: 2037 (GFA)

<http://geolabpasaia.org/gnss/ARA-euref/>

ARA-DAC details:

Contact person: J. Zurutuza

Contact mail: geodesia@aranzadi.eus

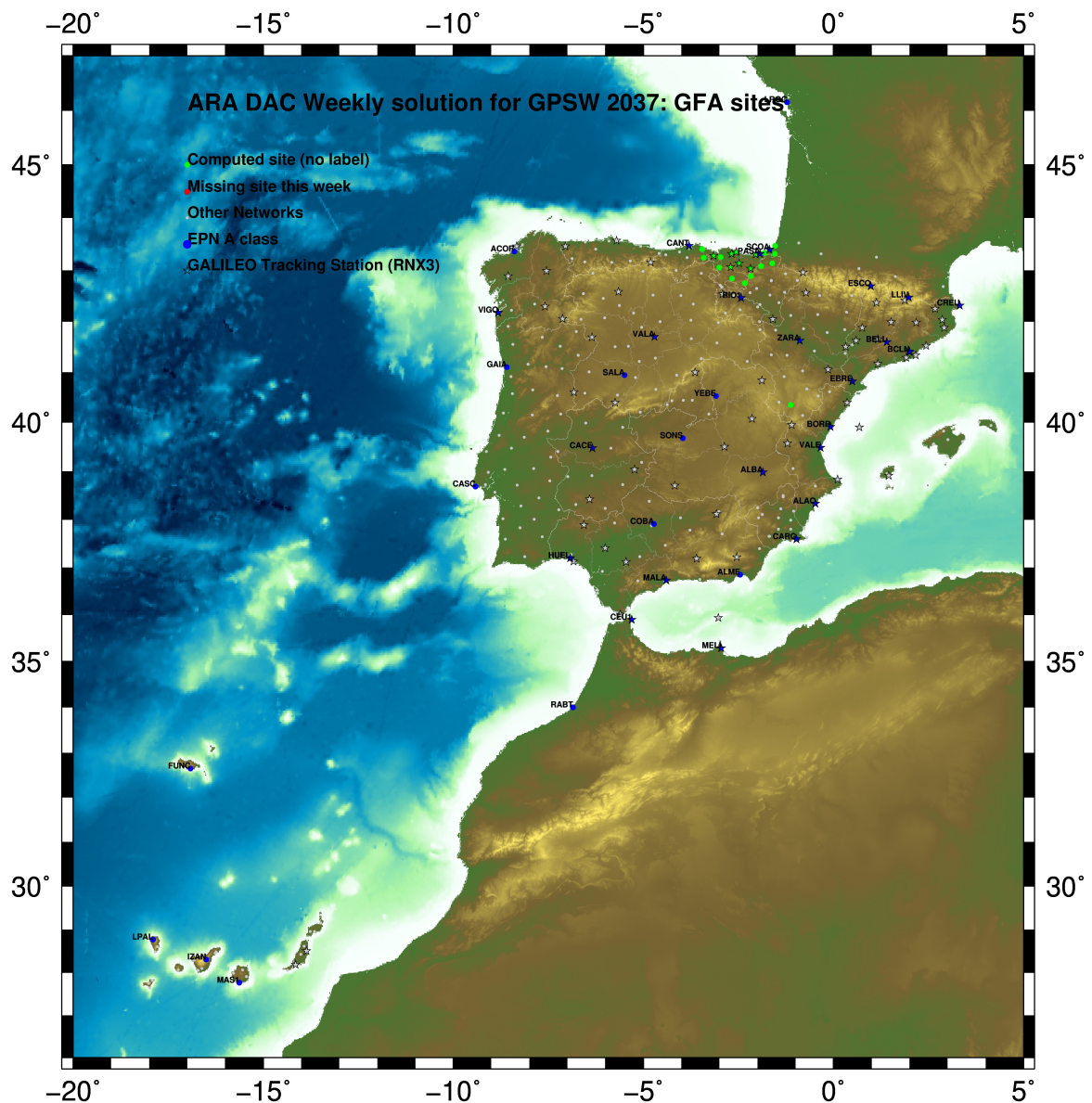
Report generated on 2019/02/10 at 22:15:34



1 Introduction

In may 2015 ARA (EUREF's acronym of the ARANZADI's Department of Applied Geodesy), kicks off as a EUREF's Operational Center. In July 2015, the Densification solutions ARA computes routinely in a weekly basis start being submitted to the EUREF's EPN Densification Project.

2 Map of Computed Sites



GM 2019 Feb 10 22:15:26

Fig.1: Computed Sites for GPS Week2037 (GFA)

3 Main Computation Parameters

The main parameters considered in the ARA analysis follow strictly the EPN recommendations.

- Preprocessing: Independent baselines are defined by the criterion of maximum common observations. Cycle slips are fixed with the MAUPRP program, analysing triple phase differences for each independent baseline. If MAUPRP does not fix all slips for one station, that station is edited out.
- Basic Observable : Carrier phase, L_1 and L_2 ; a priori sigma of single differences:0.002 m.
 - sampling (for ambiguity resolution) : 30 s
 - sampling (for final processing) : 180 s
 - Systems: GPS+GLONASS observations are used (GALILEO also used if available from GPSW 1986 on)
- Modelled observable: Double differences of carrier phase using different combinations based on the distance.
- Ground antenna phase center calibrations: Group APCV used from the PCV_COD.I14 file and individual calibrations from EPNC_14.ATX. EPN_A class sites (CRD + VEL) IGS14 used to define the reference frame (from GPSW 1934). If individual calibrations, other from these, are available, they are also included in the analysis.
- Troposphere:
 - 3 deg elev. cutoff; elevation dependent weighting
 - VMF1 mapping function. ZPD parameters are estimated using the VMF1 mapping function.
 - CHENHER gradient estimation model.
- Ionosphere: no a priori model, ionospheric effect almost removed by iono free combination.
- Ocean Loading: FES2004 (Scherneck).
- Atmosph. Loading: computed from a global grid using the GRDS1S2 program of Bernese 5.2.

4 Estimated Parameters

- Adjustment: Least Squares
- Rejection Criteria: 3*rms of single differences, in the weekly combination of daily normal equations (ADDNEQ)
- Station coordinates: minimum constraints (MC) to EPN A class sites (only translations).
- Troposphere: 3 deg. After having obtained coordinates valid for the entire week, tropospheric zenith delay is solved at each site at intervals of 1 hour throughout the week, holding the coordinates constrained at the weekly values.
- Ionospheric: second and third "High Order Ionosphere (HOI)" corrections used, using CODE files, to improve Ambiguity Resolution.
- Satellite clock bias: not estimated because are eliminated by double differencing the phase data.
- Receiver clock bias: not estimated because are eliminated by double differencing the phase data.
- Orbits and ERPs: CODE's orbits and ERP for both rapid and final solutions. DE405 planetary ephemeris and JGM3 Earth geopotential model is used.
- Tidal displacements: according to IERS2010 Conventions. Atmospheric loading corrections used.

- Ambiguity: an advanced ambiguity resolution (AR) scheme is included:
 - Code-Based Wideline (WL) AR for baselines shorter than 6000km, a Melbourne-Wuebbena wide-lane and narrow-lane AR is computed.
 - Phase-Based Wideline (L_5) AR for baselines shorter than 200km, the code-based wide-lane AR is replaced by a phase-only wide-lane with a subsequent narrow-lane AR.
 - Quasi-Ionosphere-Free (QIF)AR for the remaining real-valued ambiguities for baselines shorter than 2000km.
 - Direct L_1/L_2 AR for baselines shorter than 20km
- AR Verification: Each baseline is processed by introducing the resolved integer ambiguities and checking the residuals. If there is any problem, the ambiguities are re-initialized.

5 Computed Coordinates

In this section the adjusted coordinates are summarized. Note that the sites with an A flag are the computed ones, whereas sites flagged as W are the ones used in the Minimal Constraints condition.

5.1 IGS14

The Reference Frame considered in this section is IGS14, release C2010.

ARA LAC 2037 WEEK FINAL COMBINATION: PRECISE ORBITS 10-FEB-19 18:46

LOCAL GEODETIC DATUM: IGS14 EPOCH: 2019-01-23 12:00:00

NUM	STATION NAME	X (M)	Y (M)	Z (M)	FLAG
1	ACOR 13434M001	4594489.56081	-678367.45533	4357066.27867	W
33	ALDA 19383M001	4687280.15781	-190876.57478	4308106.94857	A
42	ALSA 19419M001	4677250.82978	-176770.40124	4319079.86630	A
44	AMUR 19388M001	4661499.44865	-244591.26791	4332269.87954	A
78	BLAZ 10074M002	4634456.05574	-124344.98505	4365785.45605	A
79	BIDA 00000M000	4644177.82699	-145778.33251	4354832.48059	A
89	BRZR 19387M001	4662221.00244	-220769.90701	4333309.44379	A
9	CACE 13447M001	4899866.50473	-544567.04329	4033770.20017	W
10	CANT 13438M001	4625924.31612	-307096.24115	4365771.55176	W
114	CHER 00000M000	4645880.32812	-125721.93749	4353624.37070	A
15	CREU 13432M001	4715420.13295	273178.05181	4271946.83675	W
16	EBRE 13410M001	4833519.99035	41537.37801	4147461.71309	W
135	ELGE 19353S001	4657557.40643	-202241.48149	4338991.86575	A
137	EMAZ 17001M001	4645924.21114	-276949.87399	4347759.57707	A
157	GERN 19389M001	4642811.31252	-217222.93899	4353278.87795	A
177	IGEL 19352S001	4645951.43214	-165574.51146	4352550.41453	A
182	ISPS 19484M001	4640596.48336	-206963.78469	4356391.91043	A
187	KAST 19499M001	4646949.08691	-240747.28487	4348014.98410	A
192	LARE 19440M001	4632831.95355	-279026.14521	4360314.42431	A
193	LAZK 19354S001	4666098.34095	-178186.20013	4330463.66962	A
197	LEIT 19428M001	4663520.93586	-155858.72575	4334519.88017	A
253	ORON 19427M001	4659695.77944	-130864.74394	4338948.87982	A
260	PAS2 19351S001	4644909.06195	-156645.07569	4353623.07468	A
30	PASA 19351S001	4644909.06169	-156645.07599	4353623.07348	W
33	R101 13448M002	4708446.82763	-199490.29167	4284089.73229	W
34	SALA 13469M001	4803054.48373	-462131.07802	4158379.07290	W
35	SCDA 10088M002	4639940.50126	-136224.94936	4359552.40686	W
313	SOPU 19386M001	4643997.91312	-255913.91790	4350063.14350	A
333	TERU 13487M001	4867391.32569	-95523.36109	4108341.68015	A
366	VITO 19385M001	4679397.70384	-218436.51291	4314898.36339	A
43	YEBE 13420M001	4848724.56998	-261631.93942	4123094.32637	W
44	ZARA 13462M001	4773803.17217	-73505.99261	4215454.09419	W

5.2 ETRF2000 (ETRS89) Coordinates

European Terrestrial Reference System, 1989 (ETRS89) is realized by ETRF2000 (Boucher and Altamimi, 2011) and (Altamimi, 2017).

ETRF2000 FINAL COORD. wk 2037 10-FEB-19 18:46

LOCAL GEODETIC DATUM: ETRF2000 EPOCH: 2019-01-23 12:00:00

NUM	STATION NAME	X (M)	Y (M)	Z (M)	FLAG
1	ACOR 13434M001	4594489.86450	-678367.98621	4357065.86643	W
33	ALDA 19383M001	4687280.51459	-190877.11415	4308106.53529	A
42	ALSA 19419M001	4677251.18894	-176770.93953	4319079.45594	A
44	AMUR 19388M001	4661499.80087	-244591.80477	4332269.46755	A
78	BLAZ 10074M002	4634456.42414	-124345.51878	4365785.04653	A
79	BIDA 00000M000	4644178.19216	-145778.86730	4354832.07108	A
89	BRZR 19387M001	4662221.35748	-220770.44388	4333309.03204	A
9	CACE 13447M001	4899866.80181	-544567.60515	4033769.76661	W
10	CANT 13438M001	4625924.66339	-307096.77451	4365771.14169	W
114	CHER 00000M000	4645880.69553	-125722.47240	4353623.96130	A
15	CREU 13432M001	4715420.54081	273177.51119	4271946.42682	W
16	EBRE 13410M001	4833520.36298	41536.82444	4147461.29157	W
135	ELGE 19353S001	4657557.76400	-202242.01783	4338991.45457	A
137	EMAZ 17001M001	4645924.56067	-276950.40934	4347759.16586	A
157	GERN 19389M001	4642811.66933	-217223.47385	4353278.46769	A
177	IGEL 19352S001	4645951.79487	-165575.04650	4352550.00465	A
182	ISPS 19484M001	4640596.84157	-206964.31929	4356391.50046	A
187	KAST 19499M001	4646949.44064	-240747.82022	4348014.58325	A
192	LARE 19440M001	4632832.30370	-279026.67921	4360314.01406	A
193	LAZK 19354S001	4666098.70072	-178186.73727	4330463.25808	A
197	LEIT 19428M001	4663521.29849	-155859.26257	4334519.46909	A
253	ORON 19427M001	4659696.14525	-130865.28029	4338948.46933	A
260	PAS2 19351S001	4644909.42579	-156645.61059	4353622.66499	A
30	PASA 19351S001	4644909.42553	-156645.61089	4353622.66379	W
33	R101 13448M002	4708447.18177	-199490.83323	4284089.31732	W
34	SALA 13469M001	4803054.79889	-462131.62990	4158378.64765	W
35	SCDA 10088M002	4639940.86786	-136225.48369	4359551.99778	W
313	SOPU 19386M001	4643998.26524	-255914.45299	4350062.73269	A
333	TERU 13487M001	4867391.67982	-95523.91857	4108341.25446	A
366	VITO 19385M001	4679398.05789	-218437.05154	4314897.95037	A
43	YEBE 13420M001	4848724.90592	-261632.49548	4123093.90010	W
44	ZARA 13462M001	4773803.53617	-73506.54048	4215453.67581	W

5.3 ETRF2014 (ETRS89) Coordinates

European Terrestrial Reference System, 1989 (ETRS89) is realized by ETRF2014 (Boucher and Altamimi, 2011) and (Altamimi, 2017) (Altamimi, 2017).

ETRF2014 FINAL COORD. wk 2037		10-FEB-19 18:46			
LOCAL GEODETIC DATUM: ETRF2014		EPOCH: 2019-01-23 12:00:00			
NUM	STATION NAME	X (M)	Y (M)	Z (M)	FLAG
1	ACDR 13434M001	4594489.82188	-678368.02493	4357065.91468	W
33	ALDA 19383M001	4687280.46981	-190877.15419	4308106.58344	A
42	ALSA 19419M001	4677251.14421	-176770.97966	4319079.50412	A
44	AMUR 19388M001	4661499.75649	-244591.84473	4332269.51574	A
78	BLAZ 10074M002	4634456.37967	-124345.55925	4365785.09484	A
79	BIDA 00000M000	4644178.14766	-145778.90766	4354832.11936	A
89	BRZR 19387M001	4662221.31303	-220770.48392	4333309.08023	A
9	CACE 13447M001	4899866.75580	-544567.64316	4033769.81421	W
10	CANT 13438M001	4625924.61954	-307096.81439	4365771.18994	W
114	CHER 00000M000	4645880.65095	-125722.51282	4353624.00958	A
15	CREU 13432M001	4715420.49423	273177.46969	4271946.47519	W
16	EBRE 13410M001	4833520.31600	41536.78418	4147461.33952	W
135	ELGE 19353S001	4657557.71954	-202242.05795	4338991.50278	A
137	EMAZ 17001M001	4645924.51654	-276950.44925	4347759.21408	A
157	GERN 19389M001	4642811.62505	-217223.51397	4353278.51594	A
177	IGEL 19352S001	4645951.75041	-165575.08678	4352550.05291	A
182	ISPS 19484M001	4640596.79729	-206964.35946	4356391.54872	A
187	KAST 19499M001	4646949.39640	-240747.86025	4348014.63148	A
192	LARE 19440M001	4632832.25969	-279026.71916	4360314.06230	A
193	LAZK 19354S001	4666098.65610	-178186.77744	4330463.30629	A
197	LEIT 19428M001	4663521.25383	-155859.30282	4334519.51732	A
253	ORON 19427M001	4659696.10056	-130865.32064	4338948.51757	A
260	PAS2 19351S001	4644909.38131	-156645.65091	4353622.71326	A
30	PASA 19351S001	4644909.38105	-156645.65121	4353622.71206	W
33	RI01 13448M002	4708447.13680	-199490.87316	4284089.36542	W
34	SALA 13469M001	4803054.75370	-462131.66857	4158378.69545	W
35	SOA 10088M002	4639940.82337	-136225.52410	4359552.04607	W
313	SOPU 19386M001	4643998.22106	-255914.49297	4350062.78092	A
333	TERU 13487M001	4867391.63293	-95523.95824	4108341.30226	A
366	VITO 19385M001	4679398.01327	-218437.09152	4314897.99853	A
43	YEBE 13420M001	4848724.85972	-261632.53466	4123093.94787	W
44	ZARA 13462M001	4773803.49017	-73506.58058	4215453.72382	W

6 Quality Control

6.1 Mean and Daily Repeatabilities

In this section, the mean and daily repeatabilities of the sites are shown. Repeatabilities refer to the IGS14 solution and are given with respect the Local frame (North-East-Up).

ARA LAC 2037 WEEK FINAL COMBINATION: PRECISE ORBITS 10-FEB-19 18:46

Station	#Days	Weekday 0123456	Repeatability (mm)		
			N	E	U
ACOR 13434M001	7	XXXXXX	0.72	0.70	2.31
ALDA 19383M001	7	XXXXXX	2.26	3.88	7.43
ALSA 19419M001	7	XXXXXX	2.34	0.39	2.81
AMUR 19388M001	7	XXXXXX	1.29	0.93	4.84
BIAZ 10074M002	7	XXXXXX	1.12	0.70	3.35
BIDA 00000M000	7	XXXXXX	1.05	0.56	1.80
BRZR 19387M001	7	XXXXXX	2.03	1.06	5.48
CACE 13447M001	6	XXXXXX	0.97	0.66	3.18
CANT 13438M001	7	XXXXXX	0.58	0.53	3.18
CHER 00000M000	5	XX XXX	1.44	1.31	3.16
CREU 13432M001	7	XXXXXX	1.15	0.65	3.33
EBRE 13410M001	7	XXXXXX	1.67	3.97	8.08
ELGE 19353S001	7	XXXXXX	1.34	0.56	3.16
EMAZ 17001M001	7	XXXXXX	1.56	1.24	2.81
GERN 19389M001	7	XXXXXX	1.28	1.28	3.50
IGEL 19352S001	7	XXXXXX	1.00	0.77	2.22
ISPS 19484M001	7	XXXXXX	0.43	0.20	3.16
KAST 19499M001	7	XXXXXX	2.26	1.14	4.69
LARE 19440M001	7	XXXXXX	1.26	0.77	2.63
LAZK 19354S001	7	XXXXXX	1.27	0.66	3.70
LEIT 19428M001	7	XXXXXX	0.54	0.56	2.61
ORON 19427M001	7	XXXXXX	1.65	0.68	3.31
PAS2 19351S001	7	XXXXXX	1.15	0.99	3.45
PASA 19351S001	7	XXXXXX	0.89	0.74	1.91
RI01 13448M002	7	XXXXXX	3.70	1.10	8.71
SALA 13469M001	6	XX XXX	0.81	0.72	2.67
SCOA 10088M002	7	XXXXXX	1.01	0.53	2.53
SOPU 19386M001	7	XXXXXX	1.36	1.79	4.34
TERU 13487M001	7	XXXXXX	1.19	0.76	2.23
VITD 19385M001	7	XXXXXX	0.88	0.74	4.56
YEBE 13420M001	7	XXXXXX	1.22	1.07	2.00
ZARA 13462M001	6	XXXXXX	1.14	1.23	2.60

Comparison of individual solutions:

ACOR 13434M001	N	0.72	-0.34	0.06	-1.45	-0.18	-0.55	0.75	0.15
ACOR 13434M001	E	0.70	0.08	-0.43	0.22	0.07	0.92	0.54	-1.26
ACOR 13434M001	U	2.31	-4.35	0.86	-0.58	-0.65	0.29	-0.08	-3.40
ALDA 19383M001	N	2.26	-0.18	-0.72	-1.97	-0.01	4.27	-0.58	2.76
ALDA 19383M001	E	3.88	3.07	1.06	1.70	0.85	-8.38	-2.40	0.04
ALDA 19383M001	U	7.43	1.99	-3.93	0.00	5.73	-15.58	-5.87	1.25
ALSA 19419M001	N	2.34	-1.40	-0.05	-1.54	-0.85	0.55	5.09	-1.29
ALSA 19419M001	E	0.39	-0.67	0.46	0.21	0.20	0.00	-0.21	-0.37
ALSA 19419M001	U	2.81	-1.43	0.74	0.05	-3.66	-4.39	-3.15	1.52
AMUR 19388M001	N	1.29	0.54	-0.46	0.96	2.63	0.43	-0.28	-1.16
AMUR 19388M001	E	0.93	0.00	0.21	-0.05	-0.89	-1.50	1.43	0.10
AMUR 19388M001	U	4.84	4.43	-2.99	-1.07	1.56	1.02	-9.67	-3.72
BIAZ 10074M002	N	1.12	1.28	0.96	1.03	1.50	-0.70	0.00	1.11
BIAZ 10074M002	E	0.70	0.33	-0.31	-0.59	0.70	-0.05	1.15	0.79
BIAZ 10074M002	U	3.35	-2.03	5.53	-1.17	-1.75	-4.71	-0.32	-2.45
BIDA 00000M000	N	1.05	0.97	1.22	1.00	0.83	-0.63	0.81	1.19
BIDA 00000M000	E	0.56	0.34	-0.25	0.14	0.48	-0.64	0.96	0.39
BIDA 00000M000	U	1.80	-0.99	0.55	0.86	-1.01	-1.33	-0.29	-3.83
BRZR 19387M001	N	2.03	0.49	-2.02	0.31	2.00	0.68	-2.82	2.82
BRZR 19387M001	E	1.06	0.56	-1.26	1.31	-1.04	-0.92	0.67	0.89
BRZR 19387M001	U	5.48	6.61	0.33	2.82	-8.45	-3.16	-6.55	-2.06
CACE 13447M001	N	0.97		-0.52	-1.22	1.43	0.89	-0.24	0.18
CACE 13447M001	E	0.66		0.30	-0.38	0.44	1.15	-0.56	0.31
CACE 13447M001	U	3.18		-1.74	-5.10	-3.63	0.87	-2.72	0.28
CANT 13438M001	N	0.58	-0.46	-0.77	-0.15	0.53	0.05	0.34	0.88
CANT 13438M001	E	0.53	0.23	-0.13	-0.02	-0.31	-1.10	0.53	0.22
CANT 13438M001	U	3.18	-4.48	1.13	-2.69	-3.78	1.93	-3.71	0.52
CHER 00000M000	N	1.44	-1.07	1.24			0.35	0.37	2.32
CHER 00000M000	E	1.31	-1.54	0.92			0.11	0.40	1.86
CHER 00000M000	U	3.16	-1.03	4.80			-2.26	0.45	-3.22
CREU 13432M001	N	1.15	-1.35	-1.86	0.19	0.11	0.68	1.03	-1.01
CREU 13432M001	E	0.65	-0.22	0.49	-0.34	0.97	0.90	-0.08	-0.62
CREU 13432M001	U	3.33	0.11	-0.39	1.11	0.73	-1.69	-5.16	5.92
EBRE 13410M001	N	1.67	-1.45	-1.06	-1.53	2.11	1.57	0.80	-1.91
EBRE 13410M001	E	3.97	3.58	1.42	2.99	-6.67	-1.39	-3.10	3.87
EBRE 13410M001	U	8.08	6.76	2.26	6.39	-12.33	-10.65	3.08	5.04
ELGE 19353S001	N	1.34	-0.30	-1.24	0.55	2.83	0.04	0.28	-0.80
ELGE 19353S001	E	0.56	-0.28	-0.42	-0.26	-0.06	0.08	1.23	-0.19
ELGE 19353S001	U	3.16	3.56	-1.02	-3.75	-5.01	0.07	-1.71	-2.04
EMAZ 17001M001	N	1.56	-0.70	0.66	0.79	-1.03	-2.39	-2.46	0.47
EMAZ 17001M001	E	1.24	0.26	1.19	-1.47	-0.77	-1.54	1.59	-0.29
EMAZ 17001M001	U	2.81	2.09	-2.71	-0.97	1.11	4.65	1.12	-3.26
GERN 19389M001	N	1.28	-1.37	-0.43	1.51	1.29	1.25	0.35	-1.45
GERN 19389M001	E	1.28	0.74	0.14	-0.89	-1.91	0.84	1.86	-0.81
GERN 19389M001	U	3.50	2.25	-2.29	-6.13	-2.40	3.08	-2.81	-1.62
IGEL 19352S001	N	1.00	-0.53	-0.49	1.31	1.53	-0.45	-0.95	0.60
IGEL 19352S001	E	0.77	-0.40	0.27	0.59	-0.56	-0.97	1.31	0.14
IGEL 19352S001	U	2.22	0.11	0.80	-2.86	0.02	-2.33	-2.92	-2.61
ISPS 19484M001	N	0.43	0.40	-0.22	0.00	0.82	0.39	0.16	-0.20
ISPS 19484M001	E	0.20	0.14	0.02	-0.12	0.04	0.10	0.26	-0.38
ISPS 19484M001	U	3.16	-0.40	1.91	-6.88	-0.10	-0.81	-2.41	-1.54
KAST 19499M001	N	2.26	0.29	1.75	-0.51	-1.55	4.31	-2.08	-1.37
KAST 19499M001	E	1.14	-0.15	0.70	0.42	-1.81	-1.92	-0.25	0.26
KAST 19499M001	U	4.69	3.83	1.22	-0.61	-5.26	6.25	0.98	-6.91
LARE 19440M001	N	1.26	-0.21	-1.31	-0.74	-1.48	-1.49	-0.94	1.36
LARE 19440M001	E	0.77	-1.09	0.79	-0.44	0.12	-1.06	0.63	-0.20
LARE 19440M001	U	2.63	4.51	-4.02	-1.31	1.22	0.32	1.24	-0.22
LAZK 19354S001	N	1.27	-0.62	-0.52	0.28	2.44	0.06	1.06	-1.38
LAZK 19354S001	E	0.66	0.06	-0.12	0.16	0.78	-1.01	-0.60	0.76

LAZK	19354S001	U	3.70	-2.23	0.72	0.95	-7.73	-1.51	-2.68	2.53
LEIT	19428M001	N	0.54	-0.65	0.55	0.48	0.71	-0.47	0.19	0.07
LEIT	19428M001	E	0.56	-0.21	0.86	0.08	0.47	-0.12	-0.07	-0.91
LEIT	19428M001	U	2.61	-0.22	2.38	-3.64	-3.08	-3.04	-1.77	-0.16
ORDN	19427M001	N	1.65	0.67	0.53	-0.47	0.83	-0.25	3.68	1.06
ORDN	19427M001	E	0.68	0.83	0.55	-0.30	0.64	-0.59	0.92	0.36
ORDN	19427M001	U	3.31	-3.82	2.28	2.60	-2.16	-3.89	2.02	-3.89
PAS2	19351S001	N	1.15	0.43	-0.58	0.99	1.24	0.76	-2.06	0.35
PAS2	19351S001	E	0.99	0.37	-1.20	-0.24	-0.96	1.01	1.51	0.18
PAS2	19351S001	U	3.45	-4.83	3.80	-1.15	-0.86	-3.89	0.37	-4.02
PASA	19351S001	N	0.89	-0.80	-0.03	1.21	1.31	-0.08	-0.89	0.32
PASA	19351S001	E	0.74	-0.19	1.30	0.20	-0.63	-0.78	0.71	-0.19
PASA	19351S001	U	1.91	-0.36	0.50	-2.16	-1.87	-1.39	-3.09	-1.34
RID1	13448M002	N	3.70	-3.14	0.48	0.70	6.26	1.21	-5.51	0.69
RID1	13448M002	E	1.10	0.32	0.48	-0.68	1.81	-0.02	-1.78	-0.22
RID1	13448M002	U	8.71	1.81	0.56	1.21	-20.77	2.41	3.18	1.56
SALA	13469M001	N	0.81	-0.97	0.09		-0.70	1.28	-0.45	0.12
SALA	13469M001	E	0.72	-0.77	-0.46		-0.31	1.23	0.30	-0.27
SALA	13469M001	U	2.67	-0.09	1.49		3.76	3.46	2.42	1.19
SCDA	10088M002	N	1.01	0.59	0.59	0.09	1.86	0.90	0.22	1.04
SCDA	10088M002	E	0.53	0.88	0.33	-0.41	0.25	-0.55	0.53	0.16
SCDA	10088M002	U	2.53	-4.02	0.34	-0.68	-3.69	2.10	0.38	1.83
SOPU	19386M001	N	1.36	0.25	-0.60	2.80	-1.15	1.07	-0.49	-0.33
SOPU	19386M001	E	1.79	2.86	0.19	-0.48	-1.49	-0.51	-2.32	1.67
SOPU	19386M001	U	4.34	-1.19	4.48	2.52	-4.64	-0.19	-5.95	-5.33
TERU	13487M001	N	1.19	0.96	0.45	1.18	1.47	1.74	0.66	0.57
TERU	13487M001	E	0.76	-0.55	-0.50	-1.18	-0.84	0.75	0.46	0.25
TERU	13487M001	U	2.23	-1.83	-3.06	-1.82	-1.06	0.18	1.83	-3.06
VITO	19385M001	N	0.88	0.36	-0.55	0.11	1.70	-0.13	0.90	-0.69
VITO	19385M001	E	0.74	0.66	-0.25	1.23	-0.69	-0.41	-0.36	-0.70
VITO	19385M001	U	4.56	5.69	-0.49	-2.55	-3.66	2.11	-5.95	-5.68
YEBE	13420M001	N	1.22	-0.86	0.90	0.96	0.66	-2.38	-0.34	0.52
YEBE	13420M001	E	1.07	1.31	0.97	0.12	-0.75	0.11	1.01	1.62
YEBE	13420M001	U	2.00	-3.23	-2.36	-1.98	-1.18	0.99	-1.10	0.77
ZARA	13462M001	N	1.14		0.32	0.05	1.09	0.00	-2.06	0.96
ZARA	13462M001	E	1.23		0.11	-0.54	-1.36	-0.47	2.24	-0.37
ZARA	13462M001	U	2.60		-0.95	-3.13	1.10	1.00	-3.14	-3.30

6.2 Datum verification

In this section, the datum verification is shown. A 3 parameter Helmert 3D (3 translations) is computed to the minimally constrained sites.

LOCAL GEODETIC DATUM: IGS14
RESIDUALS IN LOCAL SYSTEM (NORTH, EAST, UP)

NUM	NAME	FLG	RESIDUALS IN MILLIMETERS		
1	ACOR 13434M001	I W	-1.02	0.40	1.83
2	ALAC 13433M001	I W	1.94	-3.16	-8.08
3	ALBA 13452M001	I W	0.37	-1.68	-3.51
4	ALME 13437M001	I W	-0.07	-1.31	-2.74
5	BCLN 13412M001	I W	0.58	0.26	-1.78
6	BELL 13431M001	I W	1.53	1.07	-3.78
7	BORR 13480M001	I W	-0.79	-1.82	-3.05
8	BRST 10004M004	I W	-0.54	-0.28	1.06
9	CACE 13447M001	I W	-0.04	-0.13	1.18
10	CANT 13438M001	I W	0.35	-0.59	0.16
11	CARG 19412M001	I W	2.34	-1.80	-2.43
12	CASC 13909S001	I W	1.36	-0.34	4.59
13	CEU1 13449M002	I W	-0.68	1.71	-0.30
14	COBA 13453M001	I W	0.74	0.24	-3.57
15	CREU 13432M001	I W	-0.29	0.46	0.77
16	EBRE 13410M001	I W	-2.33	5.09	-0.89
17	ESCO 13435M001	I W	-0.44	0.71	1.00
18	FUNC 13911S001	I W	0.10	-2.01	2.98
19	GAIA 13902M001	I W	0.25	-2.27	3.85
21	HUEL 13451M001	I W	-1.83	1.62	4.90
22	IZAN 31309M002	I W	-1.43	-0.71	1.56
23	LLIV 13436M001	I W	-3.23	-0.11	10.82
24	LPAL 81701M001	I W	-3.62	0.61	0.55
25	LR0C 10023M001	I W	-0.39	-0.16	0.42
26	MALA 13443M001	I W	-0.02	0.28	2.05
27	MAS1 31303M002	I W	-0.43	0.82	2.98
29	MELI 19379M001	I W	0.07	1.86	4.27
30	PASA 19351S001	I W	0.20	0.07	0.30
31	PDEL 31906M004	I W	-1.21	-0.97	2.07
32	RABT 35001M002	I W	0.75	0.58	-4.16
33	RID1 13448M002	I W	-0.48	0.12	-0.61
34	SALA 13469M001	I W	0.20	0.72	0.16
35	SCOA 10088M002	I W	0.95	0.24	1.05
38	SONS 13446M001	I W	0.96	2.11	-1.98
39	TERC 31909M001	I W	4.93	-5.43	-8.79
40	VALA 13463M002	I W	-1.38	0.95	0.42
41	VALE 13439M001	I W	1.45	0.46	-4.57
42	VIGO 13450M001	I W	0.28	0.72	3.40
43	YEBE 13420M001	I W	0.70	0.90	1.82
44	ZARA 13462M001	I W	0.36	1.06	-2.89
45	ZIMM 14001M004	I W	-0.18	-0.30	-1.05
	RMS / COMPONENT		1.46	1.65	3.57
	MEAN		-0.00	-0.00	-0.00
	MIN		-3.62	-5.43	-8.79
	MAX		4.93	5.09	10.82

NUMBER OF PARAMETERS : 3
NUMBER OF COORDINATES : 123
RMS OF TRANSFORMATION : 2.42 MM

BARYCENTER COORDINATES:

LATITUDE : 39 40 7.24
LONGITUDE : - 5 27 40.26
HEIGHT : -49.601 KM

PARAMETERS:

TRANSLATION IN N : -0.00 +- 0.38 MM
TRANSLATION IN E : 0.00 +- 0.38 MM
TRANSLATION IN U : -0.00 +- 0.38 MM

6.3 Adjustment Statistics

In this section, the summary of the global adjustment and not subnetworks are shown. Also, the Helmert parameters of the combined solution with respect the daily solutions are shown.

```
* STATISTICAL PARAMETER-----VALUE(S)-----
NUMBER OF OBSERVATIONS          17582957
NUMBER OF UNKNOWN               215293
NUMBER OF DEGREES OF FREEDOM    17367664
PHASE MEASUREMENTS SIGMA        0.00100
SAMPLING INTERVAL (SECONDS)      180
VARIANCE FACTOR                  1.854250797224929
```

Helmert Transformation Parameters With Respect to Combined Solution:

Sol	Rms (m)	Translation (m)			Rotation (")			Scale (ppm)
		X	Y	Z	X	Y	Z	
1	0.00243	0.0051	-0.0055	-0.0083	0.0002	0.0003	-0.0001	-0.00003
2	0.00249	0.0049	0.0111	-0.0144	-0.0002	0.0005	0.0003	0.00088
3	0.00206	0.0062	0.0192	-0.0034	-0.0004	0.0002	0.0005	-0.00028
4	0.00347	0.0103	0.0068	-0.0112	0.0000	0.0005	0.0003	-0.00004
5	0.00310	0.0030	-0.0130	0.0003	0.0003	0.0000	-0.0003	-0.00054
6	0.00269	0.0023	0.0136	-0.0041	-0.0002	0.0002	0.0004	0.00012
7	0.00214	0.0069	0.0099	-0.0071	-0.0001	0.0003	0.0003	0.00007

Statistics of individual solutions:

File	RMS (m)	DOF	Chi**2/DOF	#Observations authentic / pseudo	#Parameters explicit / implicit / singular
1	0.00139	2399703	1.93	2430822	3 981 30141 0
2	0.00133	2517951	1.77	2549128	3 1014 30166 0
3	0.00130	2386934	1.69	2417129	3 981 29217 0
4	0.00141	2475602	1.98	2508377	3 1008 31770 0
5	0.00140	2498034	1.96	2530506	3 1017 31458 0
6	0.00137	2528412	1.88	2561146	3 1032 31705 0
7	0.00127	2555019	1.62	2585849	3 1032 29801 0

7 Equipment

7.1 Receiver List

Serial numbers not shown.

```
*SITE PT SOLN T DATA_START__ DATA_END____ DESCRIPTION_____ S/N__ FIRMWARE____
ACOR A 1 P 19:02:00000 19:02:86370 LEICA GRX1200PRO -----
ALDA A 1 P 19:02:00000 19:02:86370 LEICA GR10 -----
ALSA A 1 P 19:02:00000 19:02:86370 LEICA GR50 -----
AMUR A 1 P 19:02:00000 19:02:86370 LEICA GR10 -----
BIAZ A 1 P 19:02:00000 19:02:86370 TRI SP90M -----
BIDA A 1 P 19:02:00000 19:02:86370 LEICA GR10 -----
BRZR A 1 P 19:02:00000 19:02:86370 LEICA GR30 -----
CACE A 1 P 19:02:00000 19:02:86370 TRIMBLE NETR9 -----
CANT A 1 P 19:02:00000 19:02:86370 LEICA GR10 -----
CHER A 1 P 19:02:00000 19:02:86370 LEICA GRX1200+GNSS -----
CREU A 1 P 19:02:00000 19:02:86370 LEICA GR50 -----
EBRE A 1 P 19:02:00000 19:02:86370 LEICA GR50 -----
ELGE A 1 P 19:02:00000 19:02:86370 LEICA GR10 -----
EMAZ A 1 P 19:02:00000 19:02:86370 LEICA GR30 -----
GERN A 1 P 19:02:00000 19:02:86370 LEICA GR10 -----
IGEL A 1 P 19:02:00000 19:02:86370 LEICA GR30 -----
ISPS A 1 P 19:02:00000 19:02:86370 TRIMBLE NETR9 -----
KAST A 1 P 19:02:00000 19:02:86370 LEICA GR30 -----
LARE A 1 P 19:02:00000 19:02:86370 LEICA GRX1200GGPRO -----
LAZK A 1 P 19:02:00000 19:02:86370 LEICA GR10 -----
LEIT A 1 P 19:02:00000 19:02:86370 LEICA GR50 -----
ORON A 1 P 19:02:00000 19:02:86370 LEICA GR50 -----
PAS2 A 1 P 19:02:00000 19:02:86370 TPS NET-G3A -----
PASA A 1 P 19:02:00000 19:02:86370 LEICA GR10 -----
RIO1 A 1 P 19:02:00000 19:02:86370 LEICA GR25 -----
SALA A 1 P 19:02:00000 19:02:86370 LEICA GRX1200+GNSS -----
SCOA A 1 P 19:02:00000 19:02:86370 LEICA GR25 -----
SOPU A 1 P 19:02:00000 19:02:86370 LEICA GR30 -----
TERU A 1 P 19:02:00000 19:02:86370 LEICA GRX1200GGPRO -----
VITO A 1 P 19:02:00000 19:02:86370 LEICA GR10 -----
YEBE A 1 P 19:02:00000 19:02:86370 TRIMBLE NETR9 -----
ZARA A 1 P 19:02:00000 19:02:86370 TRIMBLE NETR9 -----
```

7.2 Antennas

Serial number ONLY provided in case individual calibrations are available.

```
*SITE PT SOLN T DATA_START__ DATA_END____ DESCRIPTION_____ S/N__
ACOR A 1 P 19:02:00000 19:02:86370 LEIAS04 LEIS -----
ALDA A 1 P 19:02:00000 19:02:86370 LEIAS10 NONE -----
ALSA A 1 P 19:02:00000 19:02:86370 LEIAS10 NONE -----
AMUR A 1 P 19:02:00000 19:02:86370 LEIAS10 NONE -----
```

```

BIAZ A 1 P 19:02:00000 19:026:86370 LEIAR25 LEIT -----
BIDA A 1 P 19:02:00000 19:026:86370 LEIAS10 NONE -----
BRZR A 1 P 19:02:00000 19:026:86370 LEIAS10 NONE -----
CACE A 1 P 19:021:00000 19:026:86370 TRM29659.00 NONE -----
CANT A 1 P 19:02:00000 19:026:86370 LEIAR25.R4 LEIT 25066
CHER A 1 P 19:02:00000 19:026:86370 LEIAX1203+GNSS NONE -----
CREU A 1 P 19:02:00000 19:026:86370 LEIAR25.R4 NONE 26357
EBRE A 1 P 19:02:00000 19:026:86370 LEIAR25.R4 NONE 26359
ELGE A 1 P 19:02:00000 19:026:86370 LEIAR25.R4 LEIT -----
EMAZ A 1 P 19:02:00000 19:026:86370 LEIAS10 NONE -----
GERN A 1 P 19:02:00000 19:026:86370 LEIAS10 NONE -----
IGEL A 1 P 19:02:00000 19:026:86370 LEIAR20 LEIM -----
ISPS A 1 P 19:02:00000 19:026:86370 TRM59900.00 SCIS -----
KAST A 1 P 19:02:00000 19:026:86370 LEIAS10 NONE -----
LARE A 1 P 19:02:00000 19:026:86370 LEIAT504 NONE -----
LAZK A 1 P 19:02:00000 19:026:86370 LEIAR25.R4 LEIT -----
LEIT A 1 P 19:02:00000 19:026:86370 LEIAR10 NONE -----
ORDN A 1 P 19:02:00000 19:026:86370 LEIAR10 NONE -----
PAS2 A 1 P 19:02:00000 19:026:86370 LEIAR20 LEIM 73034
PASA A 1 P 19:02:00000 19:026:86370 LEIAR20 LEIM 73034
RID1 A 1 P 19:02:00000 19:026:86370 LEIAR25.R4 LEIT 25138
SALA A 1 P 19:02:00000 19:026:86370 LEIAR25 NONE -----
SCDA A 1 P 19:02:00000 19:026:86370 TRM55971.00 NONE -----
SOPU A 1 P 19:02:00000 19:026:86370 LEIAS10 NONE -----
TERU A 1 P 19:02:00000 19:026:86370 LEIAT504GG LEIS -----
VITO A 1 P 19:02:00000 19:026:86370 LEIAS10 NONE -----
YEBE A 1 P 19:02:00000 19:026:86370 TRM29659.00 NONE -----
ZARA A 1 P 19:021:00000 19:026:86370 TRM29659.00 NONE -----

```

7.3 Eccentricities

```

*
*SITE PT SOLN T DATA_START_ DATA_END_ AXE ARP->BENCHMARK(M)
UP----- NORTH___ EAST____
ACOR A 1 P 19:02:00000 19:026:86370 UNE 3.0460 0.0000 0.0000
ALDA A 1 P 19:02:00000 19:026:86370 UNE 0.0000 0.0000 0.0000
ALSA A 1 P 19:02:00000 19:026:86370 UNE 0.0000 0.0000 0.0000
AMUR A 1 P 19:02:00000 19:026:86370 UNE 0.0000 0.0000 0.0000
BIAZ A 1 P 19:02:00000 19:026:86370 UNE 0.0000 0.0000 0.0000
BIDA A 1 P 19:02:00000 19:026:86370 UNE 0.0000 0.0000 0.0000
BRZR A 1 P 19:02:00000 19:026:86370 UNE 0.0771 0.0000 0.0000
CACE A 1 P 19:021:00000 19:026:86370 UNE 0.0600 0.0000 0.0000
CANT A 1 P 19:02:00000 19:026:86370 UNE 3.0490 0.0000 0.0000
CHER A 1 P 19:02:00000 19:026:86370 UNE 0.0000 0.0000 0.0000
CREU A 1 P 19:02:00000 19:026:86370 UNE 0.0770 0.0000 0.0000
EBRE A 1 P 19:02:00000 19:026:86370 UNE 0.0770 0.0000 0.0000
ELGE A 1 P 19:02:00000 19:026:86370 UNE 0.0000 0.0000 0.0000
EMAZ A 1 P 19:02:00000 19:026:86370 UNE 0.0350 0.0000 0.0000
GERN A 1 P 19:02:00000 19:026:86370 UNE 0.0000 0.0000 0.0000
IGEL A 1 P 19:02:00000 19:026:86370 UNE 0.0000 0.0000 0.0000
ISPS A 1 P 19:02:00000 19:026:86370 UNE 0.0350 0.0000 0.0000
KAST A 1 P 19:02:00000 19:026:86370 UNE 0.0350 0.0000 0.0000
LARE A 1 P 19:02:00000 19:026:86370 UNE 0.0000 0.0000 0.0000
LAZK A 1 P 19:02:00000 19:026:86370 UNE 0.0000 0.0000 0.0000
LEIT A 1 P 19:02:00000 19:026:86370 UNE 0.0000 0.0000 0.0000
ORDN A 1 P 19:02:00000 19:026:86370 UNE 0.0000 0.0000 0.0000
PAS2 A 1 P 19:02:00000 19:026:86370 UNE 0.0000 0.0000 0.0000
PASA A 1 P 19:02:00000 19:026:86370 UNE 0.0000 0.0000 0.0000
RID1 A 1 P 19:02:00000 19:026:86370 UNE 0.0606 0.0000 0.0000
SALA A 1 P 19:02:00000 19:026:86370 UNE 0.0600 0.0000 0.0000
SCDA A 1 P 19:02:00000 19:026:86370 UNE 0.0000 0.0000 0.0000
SOPU A 1 P 19:02:00000 19:026:86370 UNE 0.0771 0.0000 0.0000
TERU A 1 P 19:02:00000 19:026:86370 UNE 0.0600 0.0000 0.0000
VITO A 1 P 19:02:00000 19:026:86370 UNE 0.0000 0.0000 0.0000
YEBE A 1 P 19:02:00000 19:026:86370 UNE 0.0000 0.0000 0.0000
ZARA A 1 P 19:021:00000 19:026:86370 UNE 3.2590 0.0000 0.0000

```

8 Inconsistencies (logsheet-RINEX metadata)

The following inconsistencies were found comparing the data available in the logsheets and the RINEX headers:

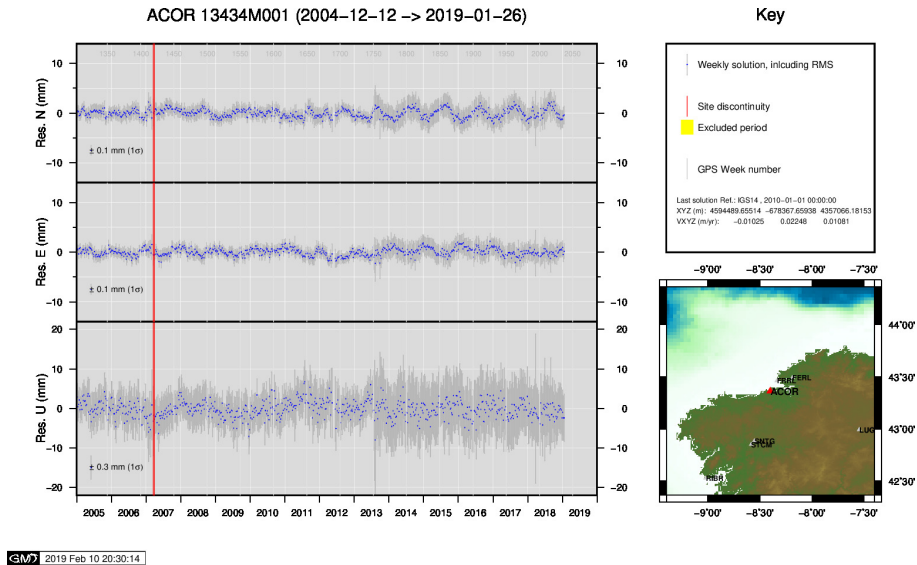
```

2019-02-10 13:12 UTC | GERNO200.190 | RECEIVER FIRM. VERS. | 4.10 -> 4.10/6.523
2019-02-04 23:34 UTC | GERNO210.190 | RECEIVER FIRM. VERS. | 4.10 -> 4.10/6.523
2019-02-05 23:17 UTC | GERNO220.190 | RECEIVER FIRM. VERS. | 4.10 -> 4.10/6.523
2019-02-06 23:25 UTC | GERNO230.190 | RECEIVER FIRM. VERS. | 4.10 -> 4.10/6.523
2019-02-07 23:26 UTC | GERNO240.190 | RECEIVER FIRM. VERS. | 4.10 -> 4.10/6.523
2019-02-08 23:28 UTC | GERNO250.190 | RECEIVER FIRM. VERS. | 4.10 -> 4.10/6.523
2019-02-09 23:19 UTC | GERNO260.190 | RECEIVER FIRM. VERS. | 4.10 -> 4.10/6.523

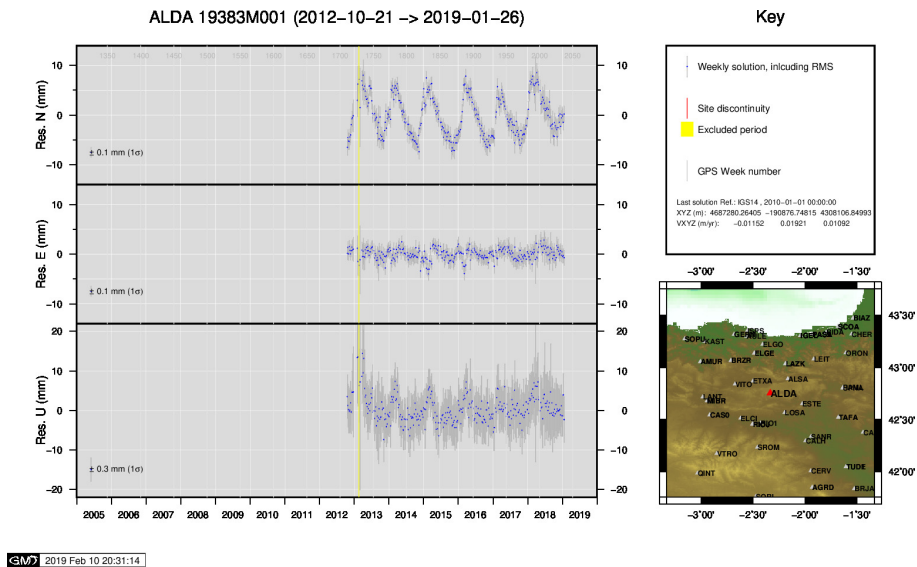
```

9 Cumulative Time Series

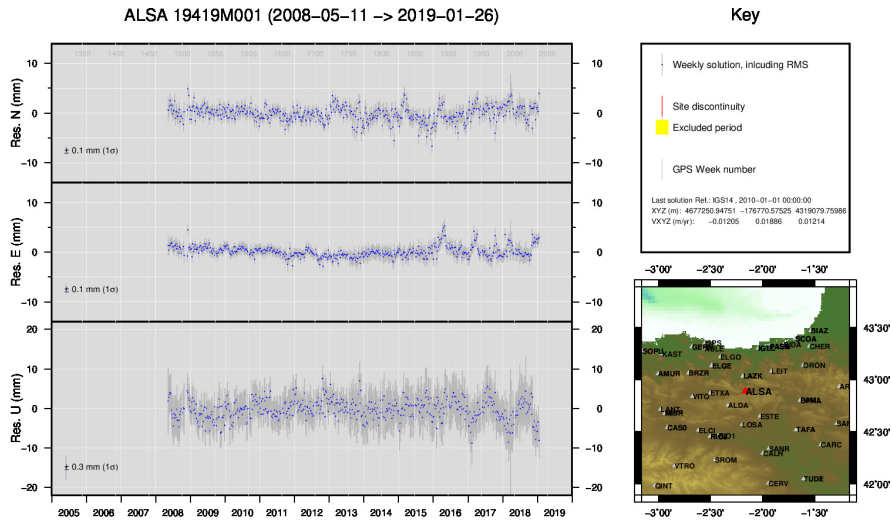
Time series of stations. Latest plots at: <http://geolabpasaia.org/gnss/ARA-net/TSeries/>, or click on the caption of each image.



1) ACOR

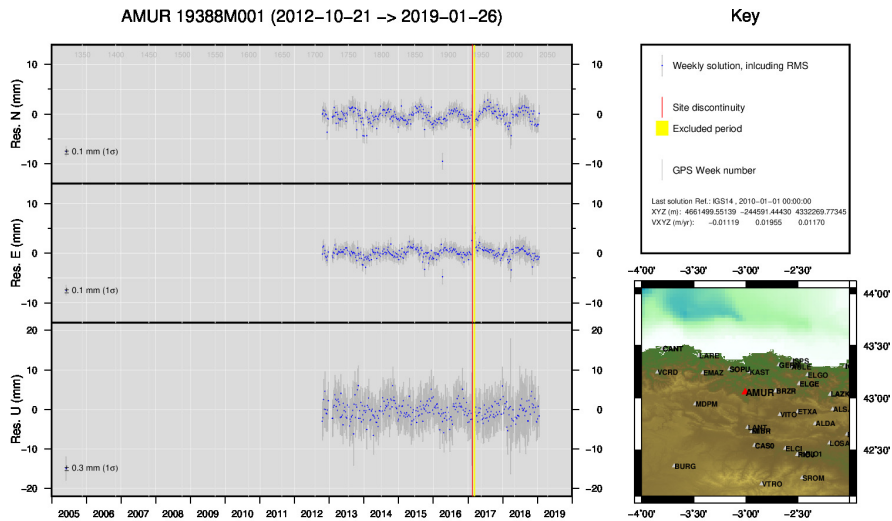


2) ALDA



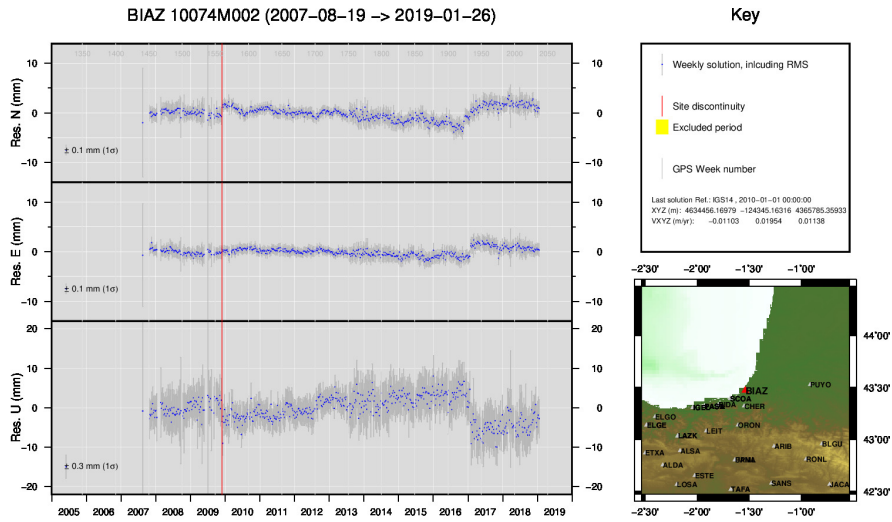
GMW 2019 Feb 10 20:31:56

3) ALSA



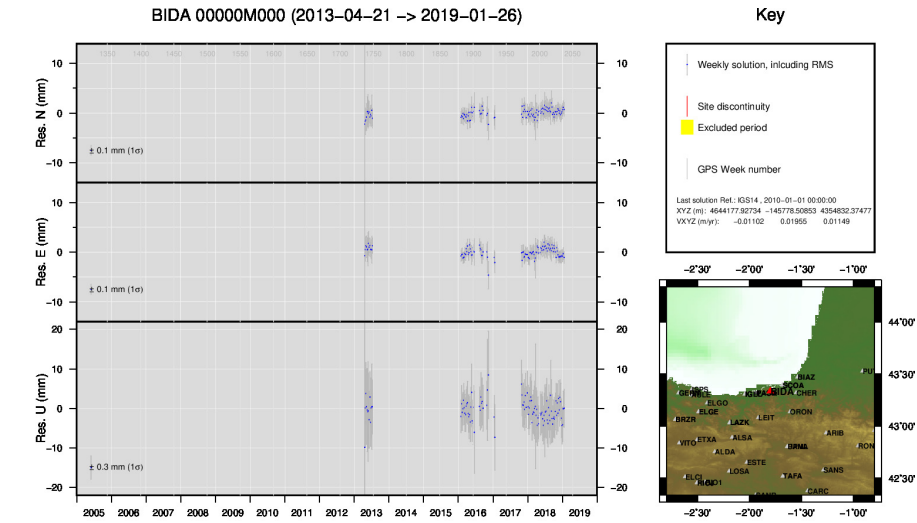
GMW 2019 Feb 10 20:32:05

4) AMUR



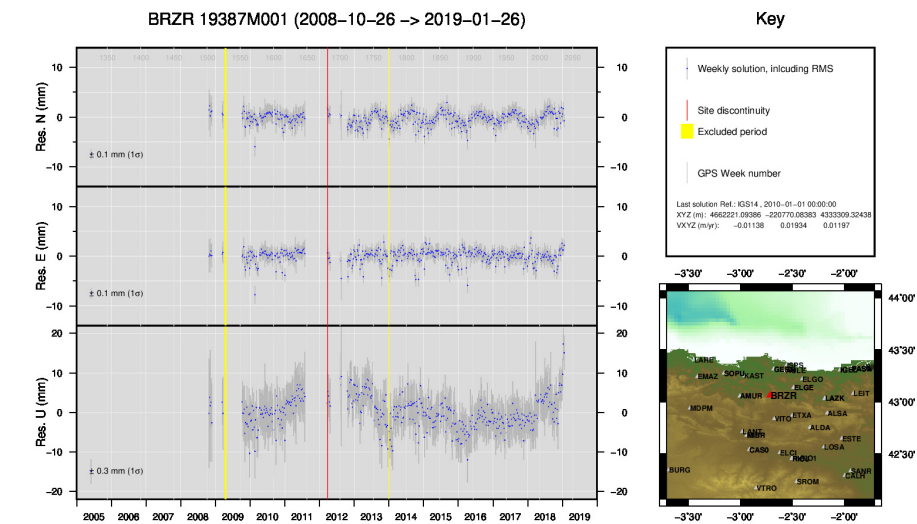
GMW 2019 Feb 10 20:34:28

5) BLAZ



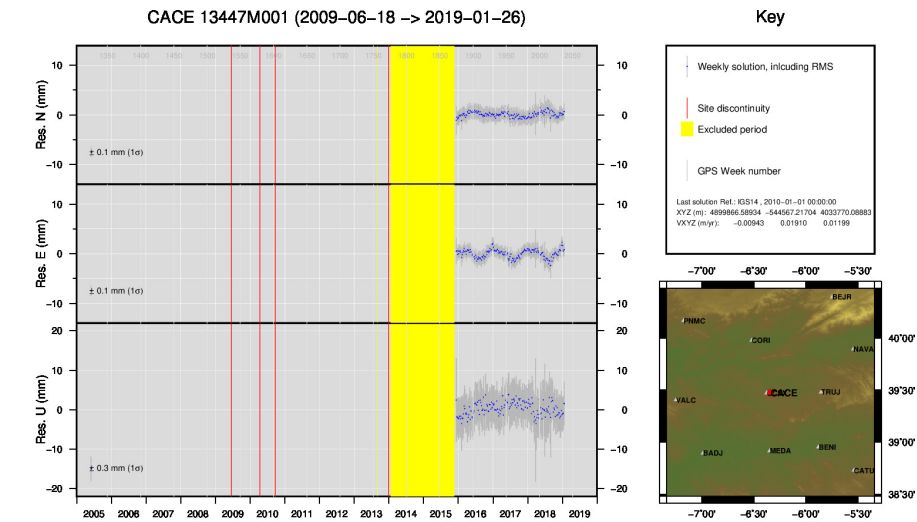
GMW 2019 Feb 10 20:34:32

6) BIDA



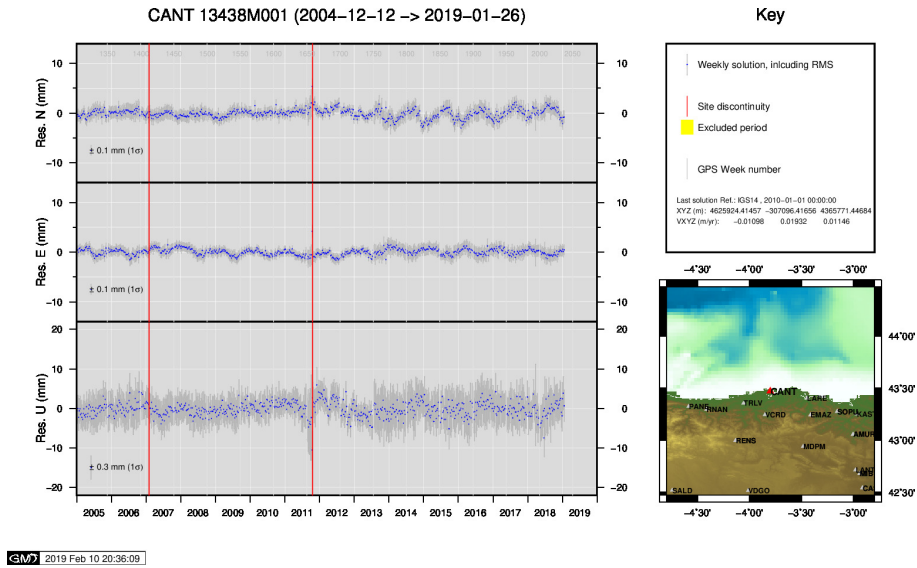
GMW 2019 Feb 10 20:35:23

7) BRZR

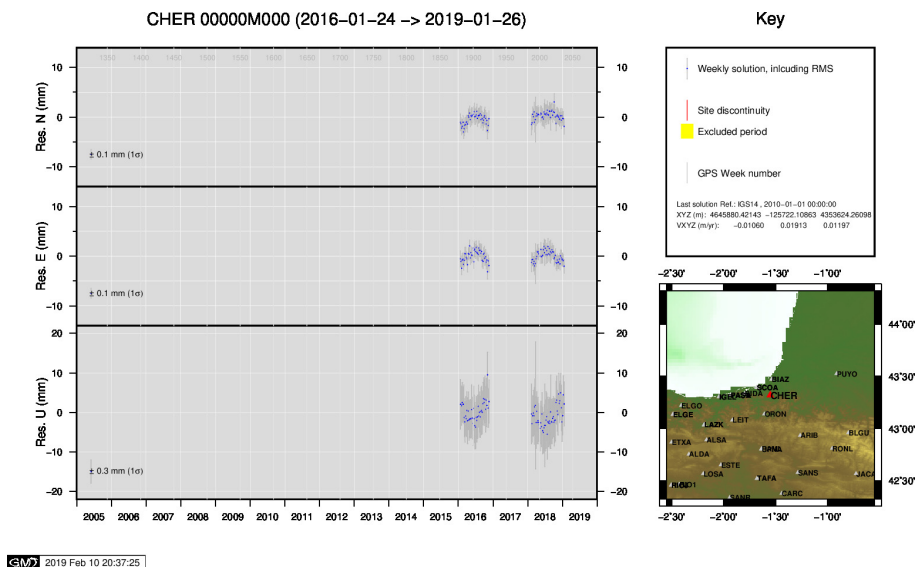


GMW 2019 Feb 10 20:35:52

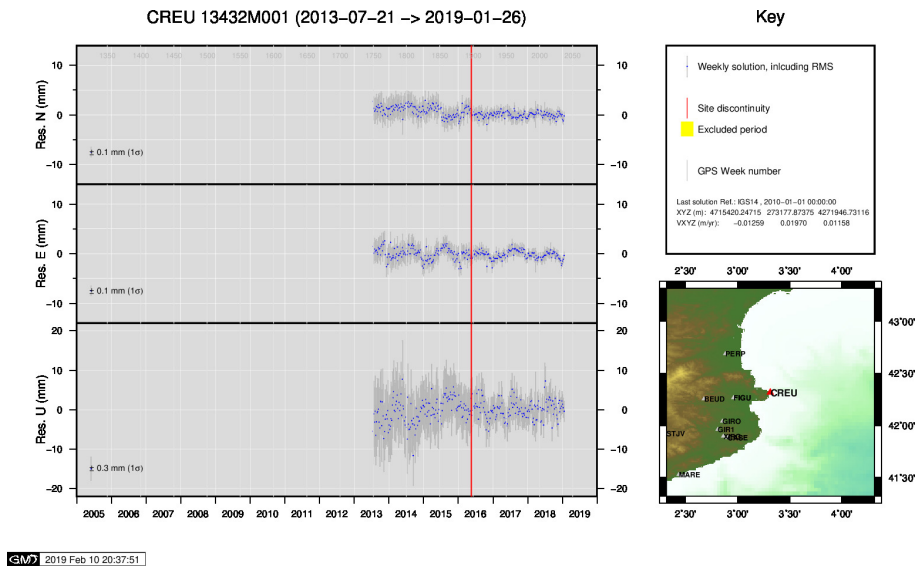
8) CACE



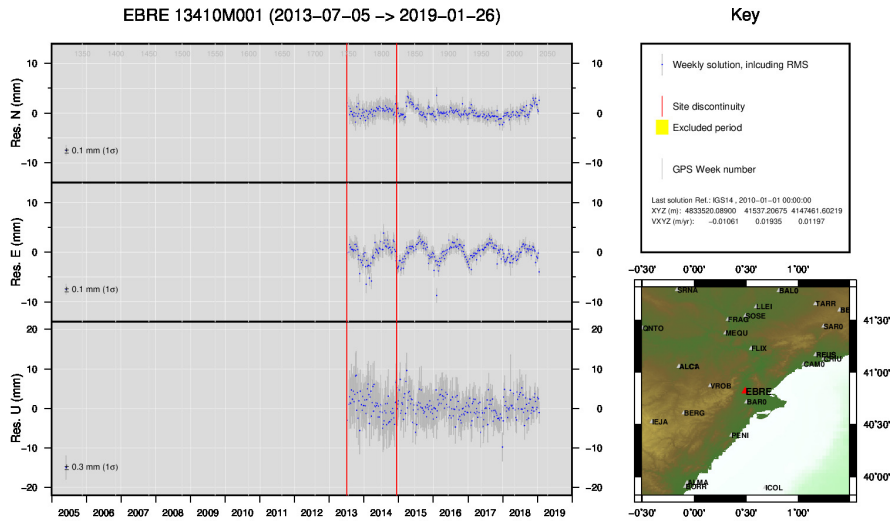
9) CANT



10) CHER

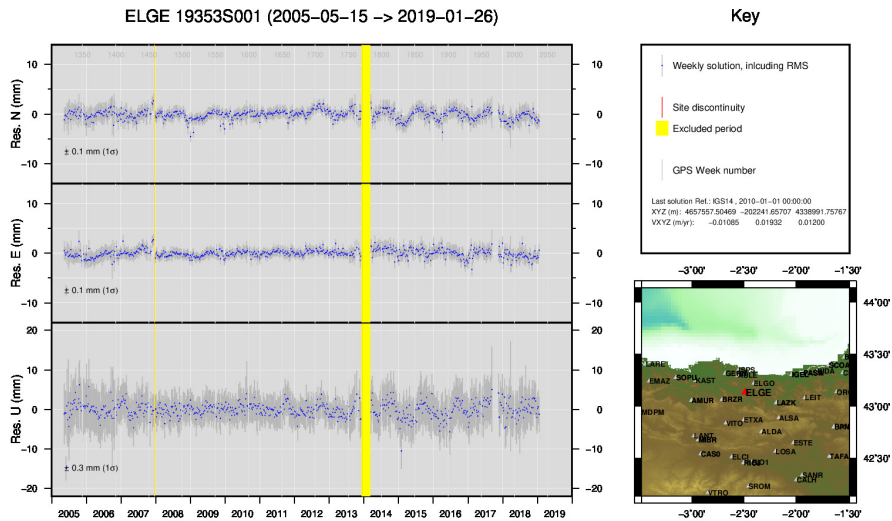


11) CREU



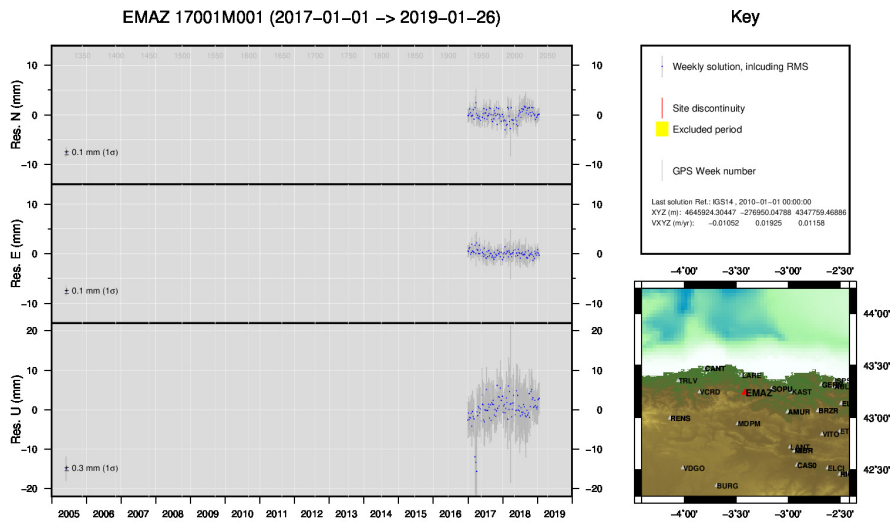
GMW 2019 Feb 10 20:38:36

12) EBRE



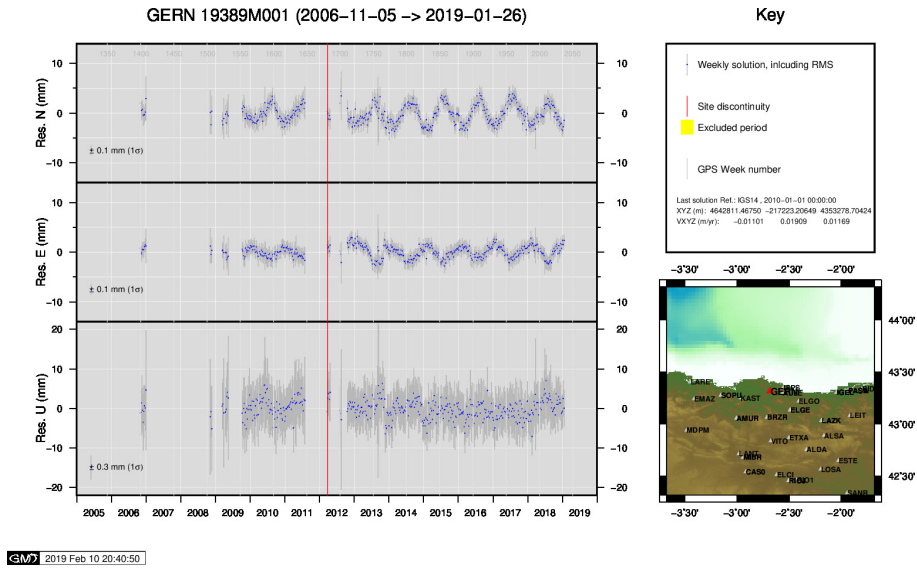
GMW 2019 Feb 10 20:39:05

13) ELGE

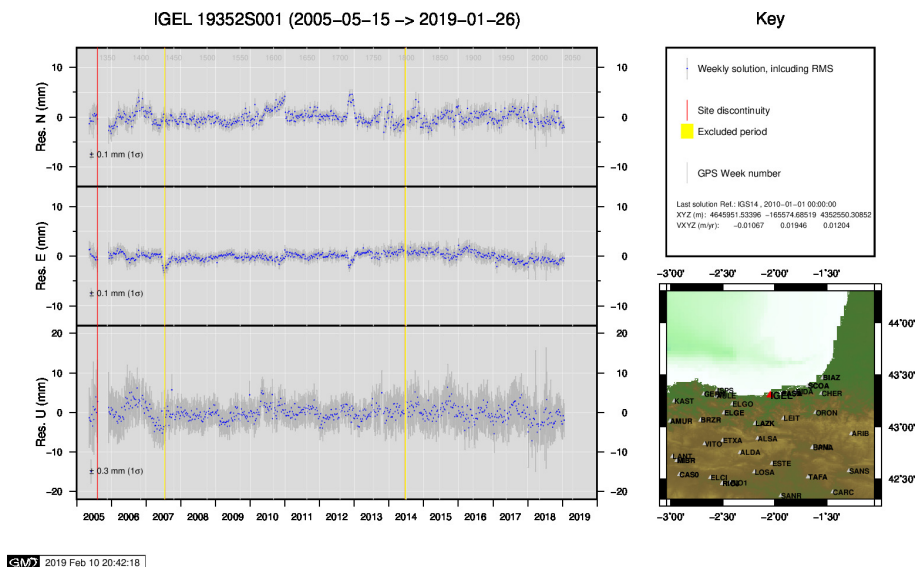


GMW 2019 Feb 10 20:39:14

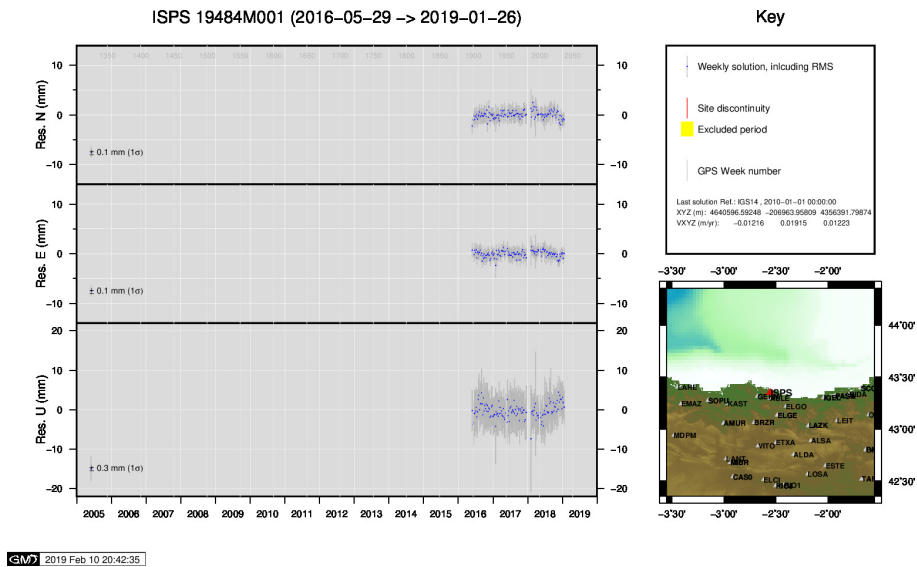
14) EMAZ



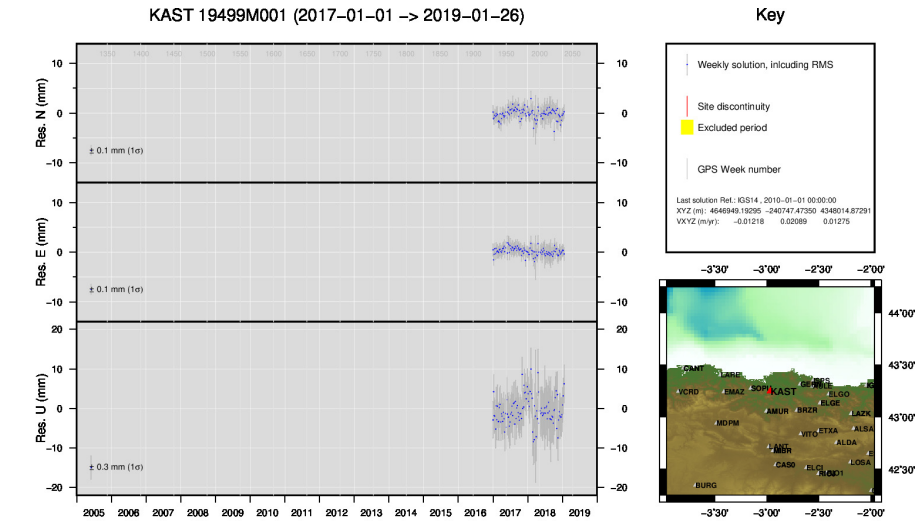
15) GERN



16) IGEL

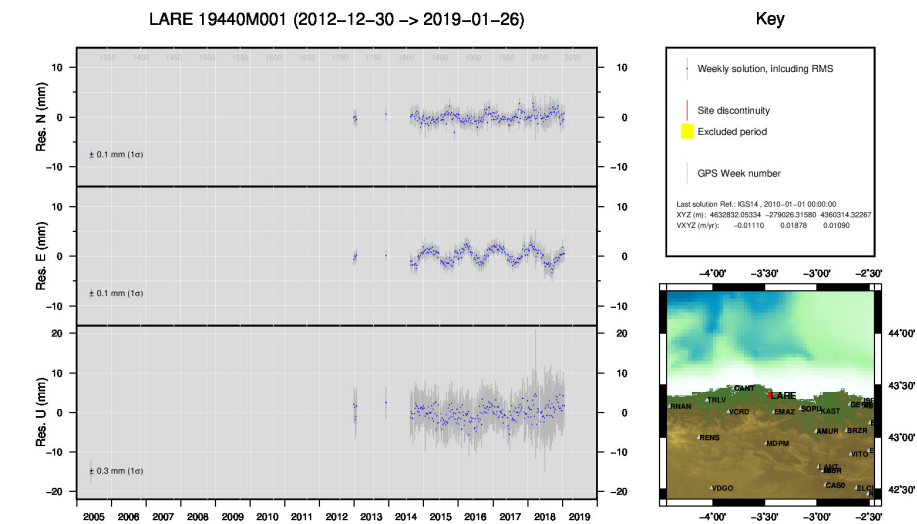


17) ISPS



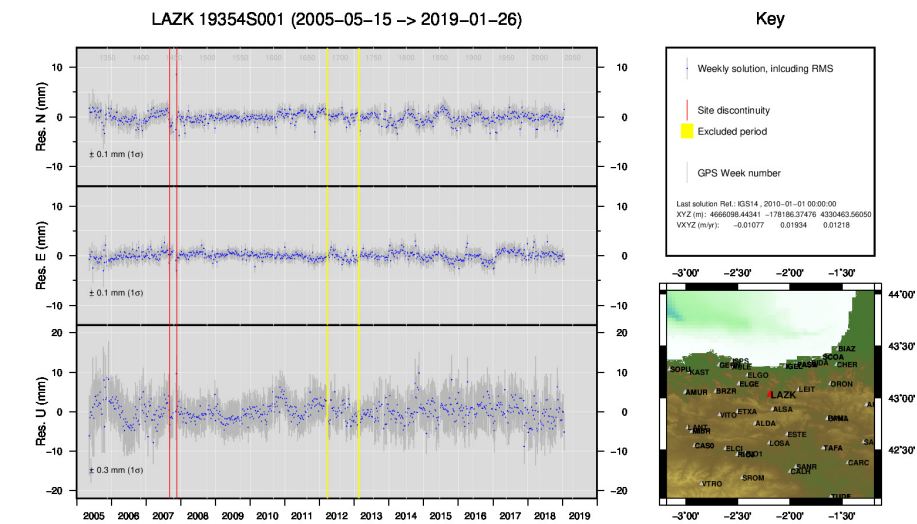
GMW 2019 Feb 10 20:43:00

18) KAST



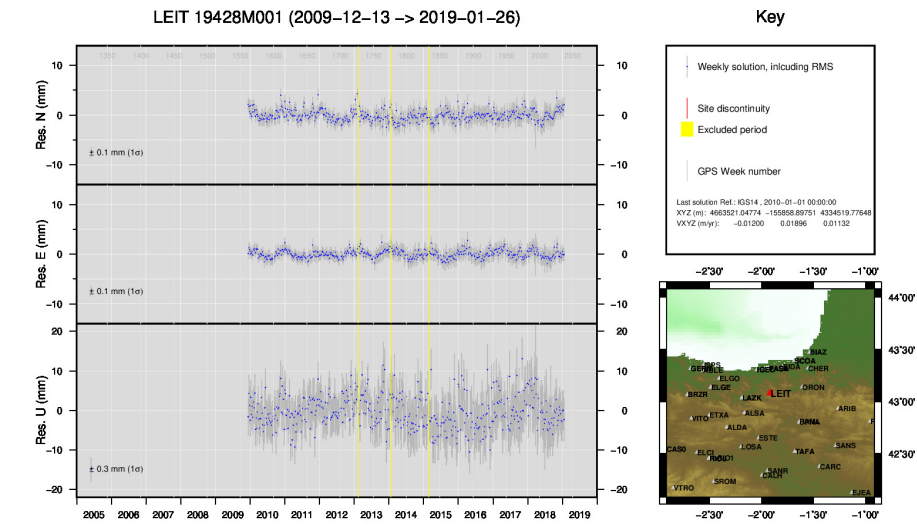
GMW 2019 Feb 10 20:43:21

19) LARE



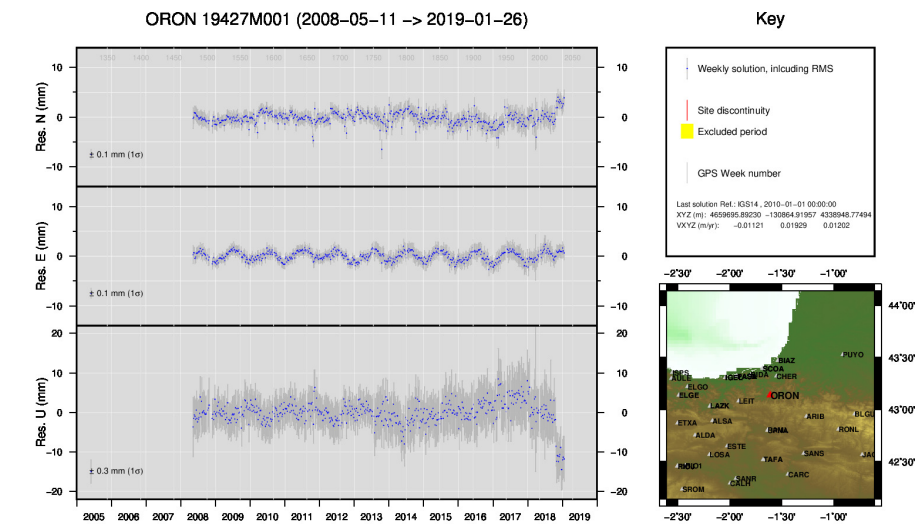
GMW 2019 Feb 10 20:43:25

20) LAZK



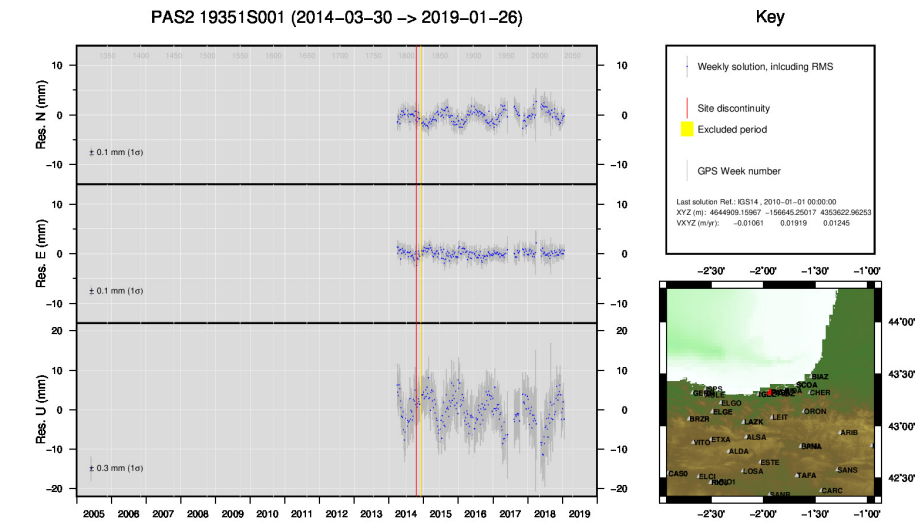
GMW 2019 Feb 10 20:43:42

21) LEIT



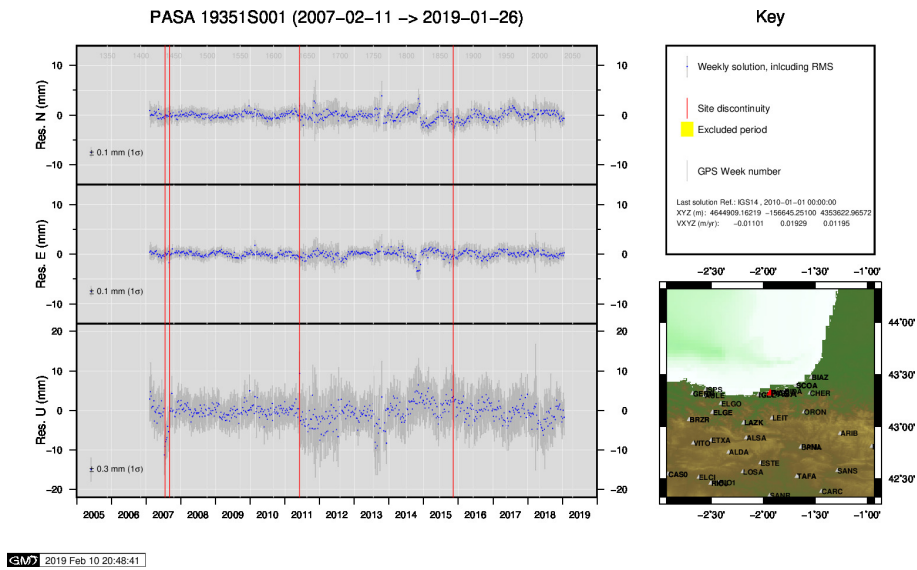
GMW 2019 Feb 10 20:48:07

22) ORON

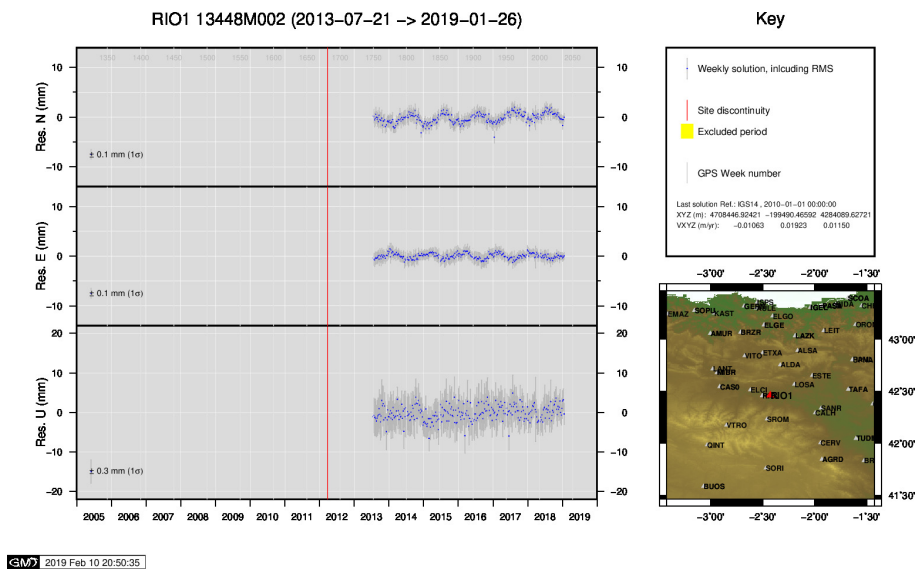


GMW 2019 Feb 10 20:48:37

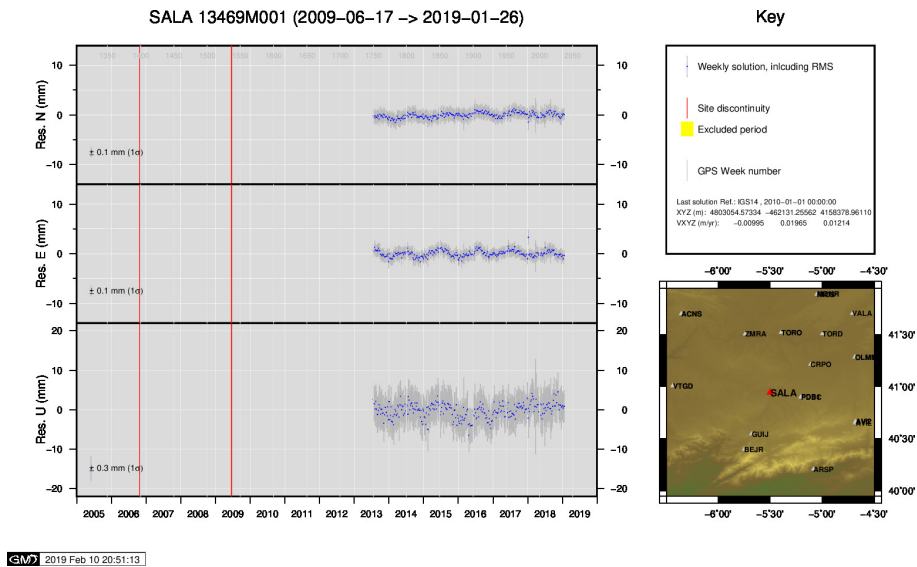
23) PAS2



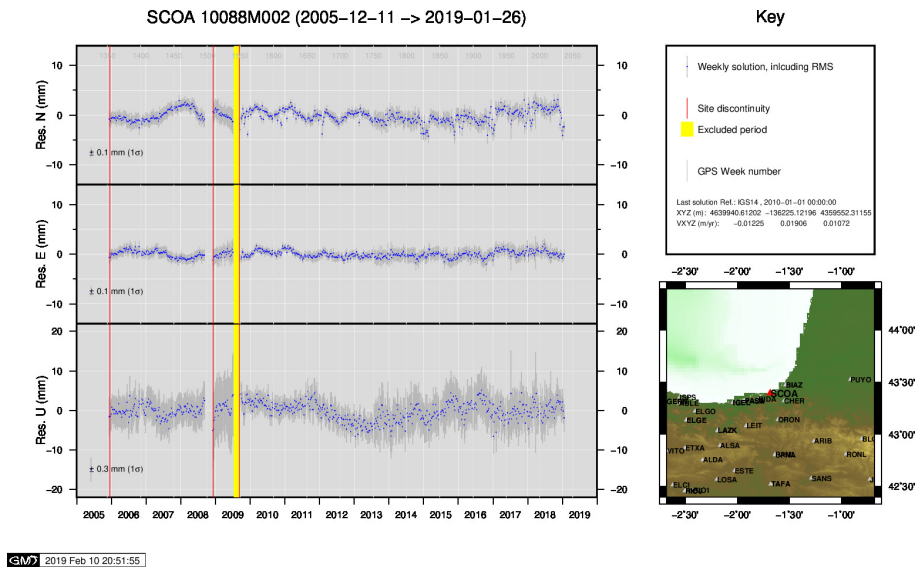
24) PASA



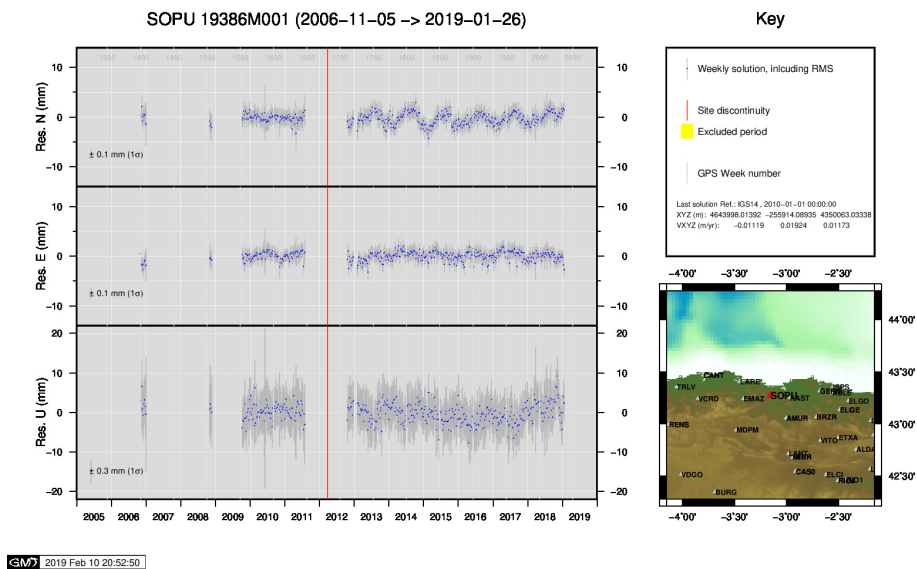
25) RIO1



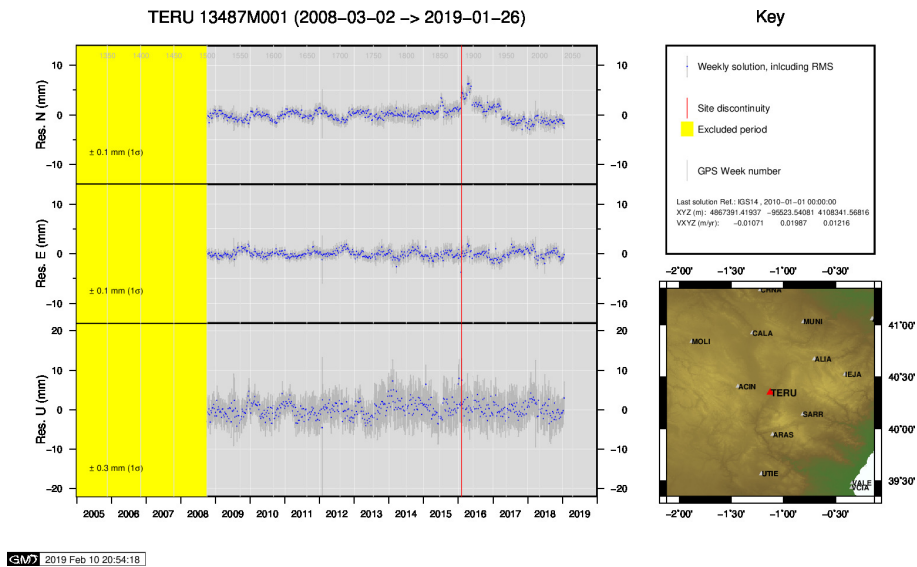
26) SALA



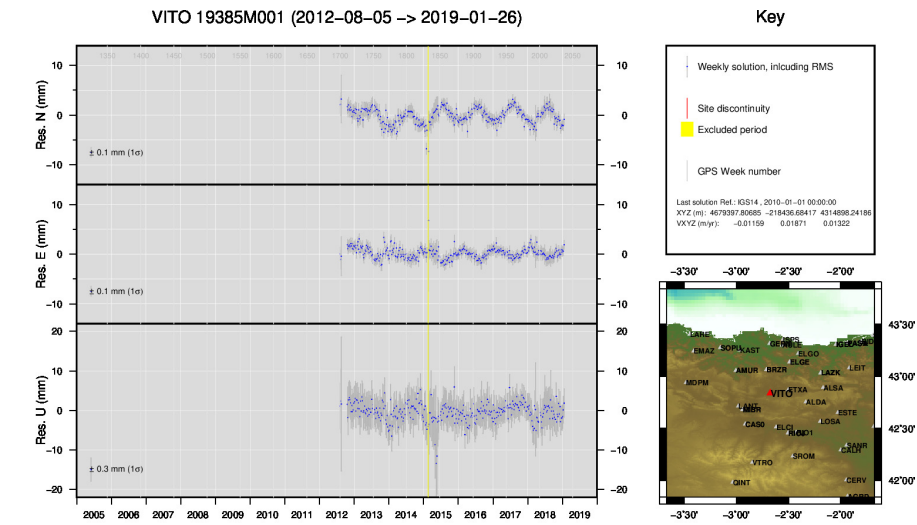
27) SCOA



28) SOPU

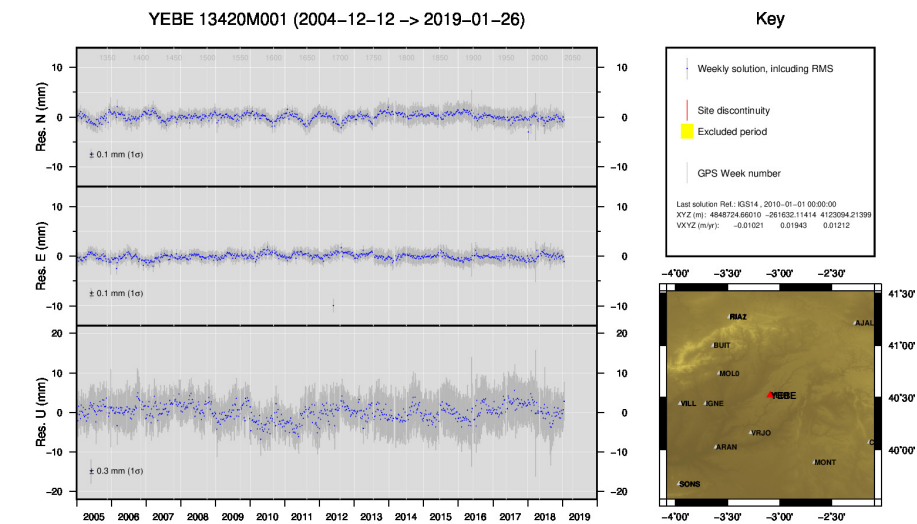


29) TERU



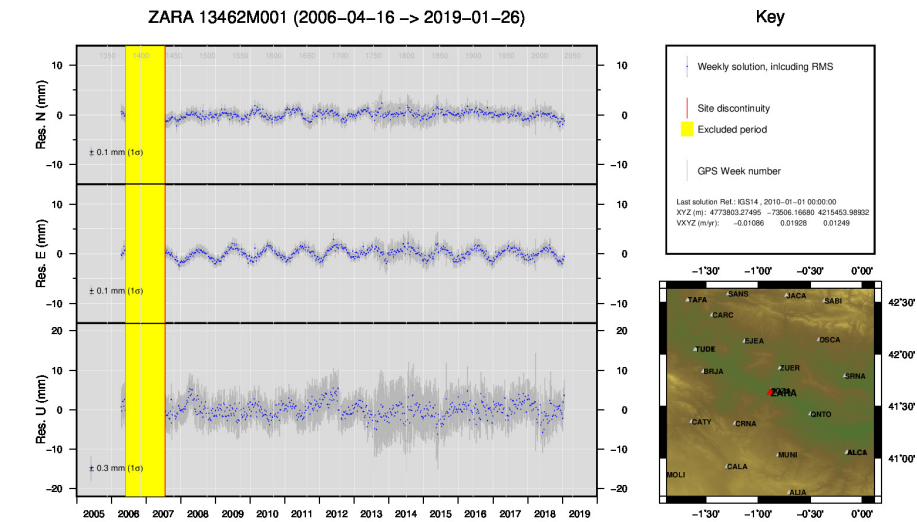
GMW 2019 Feb 10 20:56:41

30) VITO



GMW 2019 Feb 10 20:57:31

31) YEBE



GMW 2019 Feb 10 20:57:35

32) ZARA

