

ARA-DAC Weekly Analysis Result: 2003 (GFA)

Technical Report

GPS Week: 2003 (GFA)

<http://geolabpasaia.org/gnss/ARA-euref/>

ARA-DAC details:

Contact person: J. Zurutuza

Contact mail: geodesia@aranzadi.eus

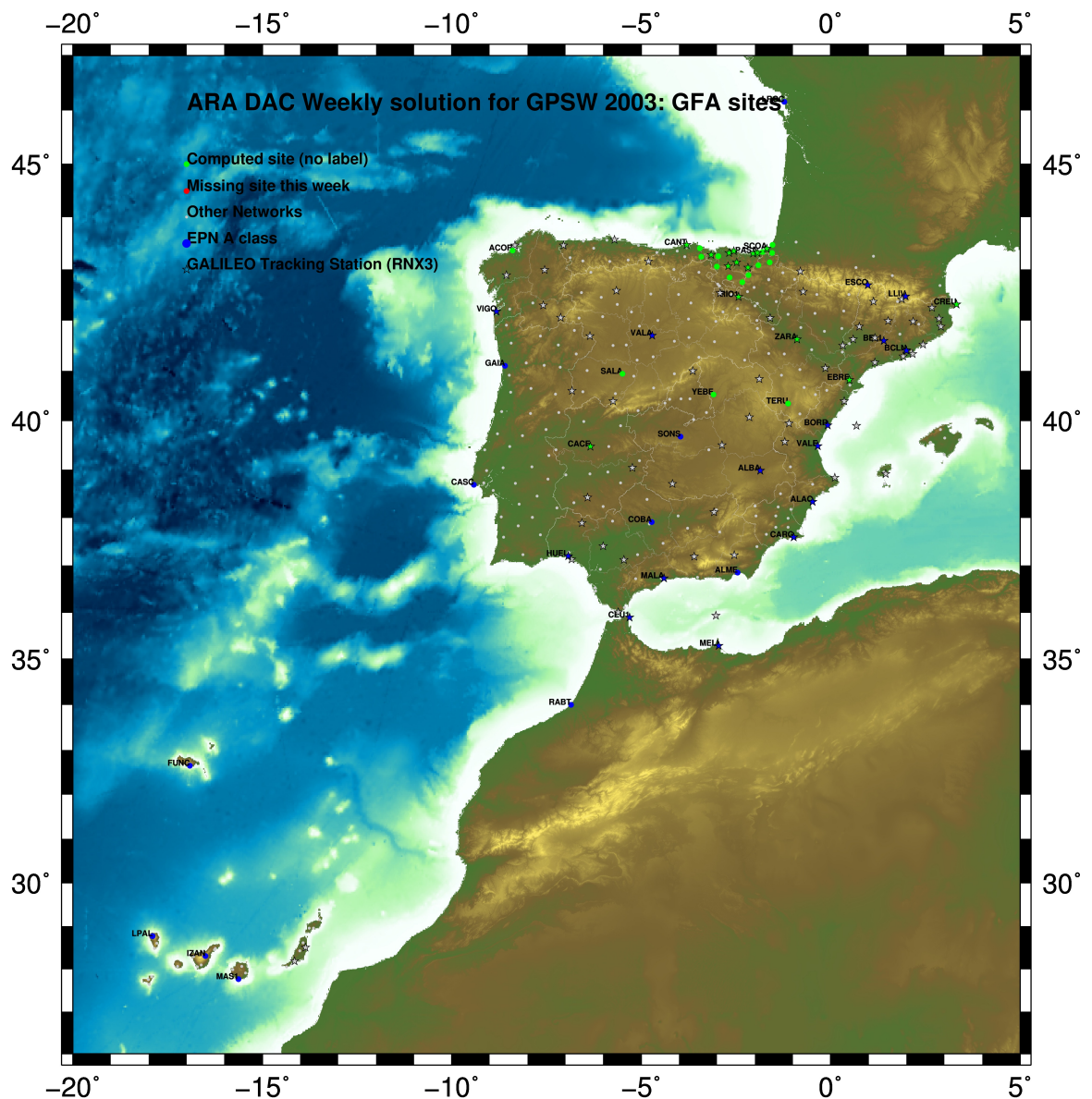
Report generated on 2018/06/19 at 02:10:54



1 Introduction

In may 2015 ARA (EUREF's acronym of the ARANZADI's Department of Applied Geodesy), kicks off as a EUREF's Operational Center. In July 2015, the Densification solutions ARA computes routinely in a weekly basis start being submitted to the EUREF's EPN Densification Project.

2 Map of Computed Sites



GM 2018 Jun 19 02:10:43

Fig.1: Computed Sites for GPS Week2003 (GFA)

3 Main Computation Parameters

The main parameters considered in the ARA analysis follow strictly the EPN recommendations.

- Preprocessing: Independent baselines are defined by the criterion of maximum common observations. Cycle slips are fixed with the MAUPRP program, analysing triple phase differences for each independent baseline. If MAUPRP does not fix all slips for one station, that station is edited out.
- Basic Observable : Carrier phase, L_1 and L_2 ; a priori sigma of single differences:0.002 m.
 - sampling (for ambiguity resolution) : 30 s
 - sampling (for final processing) : 180 s
 - Systems: GPS+GLONASS observations are used (GALILEO also used if available from GPSW 1986 on)
- Modelled observable: Double differences of carrier phase using different combinations based on the distance.
- Ground antenna phase center calibrations: Group APCV used from the PCV_COD.I14 file and individual calibrations from EPNC_14.ATX. EPN_A class sites (CRD + VEL) IGS14 used to define the reference frame (from GPSW 1934). If individual calibrations, other from these, are available, they are also included in the analysis.
- Troposphere:
 - 3 deg elev. cutoff; elevation dependent weighting
 - VMF1 mapping function. ZPD parameters are estimated using the VMF1 mapping function.
 - CHENHER gradient estimation model.
- Ionosphere: no a priori model, ionospheric effect almost removed by iono free combination.
- Ocean Loading: FES2004 (Scherneck).
- Atmosph. Loading: computed from a global grid using the GRDS1S2 program of Bernese 5.2.

4 Estimated Parameters

- Adjustment: Least Squares
- Rejection Criteria: 3*rms of single differences, in the weekly combination of daily normal equations (ADDNEQ)
- Station coordinates: minimum constraints (MC) to EPN A class sites (only translations).
- Troposphere: 3 deg. After having obtained coordinates valid for the entire week, tropospheric zenith delay is solved at each site at intervals of 1 hour throughout the week, holding the coordinates constrained at the weekly values.
- Ionospheric: second and third "High Order Ionosphere (HOI)" corrections used, using CODE files, to improve Ambiguity Resolution.
- Satellite clock bias: not estimated because are eliminated by double differencing the phase data.
- Receiver clock bias: not estimated because are eliminated by double differencing the phase data.
- Orbits and ERPs: CODE's orbits and ERP for both rapid and final solutions. DE405 planetary ephemeris and JGM3 Earth geopotential model is used.
- Tidal displacements: according to IERS2010 Conventions. Atmospheric loading corrections used.

- Ambiguity: an advanced ambiguity resolution (AR) scheme is included:
 - Code-Based Wideline (WL) AR for baselines shorter than 6000km, a Melbourne-Wuebbena wide-lane and narrow-lane AR is computed.
 - Phase-Based Wideline (L_5) AR for baselines shorter than 200km, the code-based wide-lane AR is replaced by a phase-only wide-lane with a subsequent narrow-lane AR.
 - Quasi-Ionosphere-Free (QIF)AR for the remaining real-valued ambiguities for baselines shorter than 2000km.
 - Direct L_1/L_2 AR for baselines shorter than 20km
- AR Verification: Each baseline is processed by introducing the resolved integer ambiguities and checking the residuals. If there is any problem, the ambiguities are re-initialized.

5 Computed Coordinates

In this section the adjusted coordinates are summarized. Note that the sites with an A flag are the computed ones, whereas sites flagged as W are the ones used in the Minimal Constraints condition.

5.1 IGS14

The Reference Frame considered in this section is IGS14, release C1980.

ARA LAC 2003 WEEK FINAL COMBINATION: PRECISE ORBITS						18-JUN-18 22:16
LOCAL GEODETIC DATUM: IGS14						EPOCH: 2018-05-30 12:00:00
NUM	STATION NAME	X (M)	Y (M)	Z (M)	FLAG	
1	ACOR 13434M001	4594489.56880	-678367.47075	4357066.27270	W	
33	ALDA 19383M001	4687280.16657	-190876.58481	4308106.94532	A	
42	ALSA 19419M001	4677250.84817	-176770.41696	4319079.86213	A	
44	AMUR 19388M001	4661499.45638	-244591.27858	4332269.87165	A	
77	BLAZ 10074M002	4634456.06029	-124344.99761	4365785.44599	A	
78	BIDA 00000M000	4644177.83364	-145778.34326	4354832.47248	A	
88	BRZR 19387M001	4662221.00062	-220769.92204	4333309.42822	A	
9	CACE 13447M001	4899866.50927	-544567.05612	4033770.19123	W	
10	CANT 13438M001	4625924.32004	-307096.25424	4365771.54206	W	
112	CHER 00000M000	4645880.32968	-125721.94765	4353624.36109	A	
15	CREU 13432M001	4715420.13924	273178.03818	4271946.82852	W	
16	EBRE 13410M001	4833519.99779	41537.36794	4147461.70260	W	
131	ELGE 19353S001	4657557.41137	-202241.49584	4338991.85734	A	
133	EMAZ 17001M001	4645924.22123	-276949.88607	4347759.56961	A	
153	GERN 19389M001	4642811.31901	-217222.95357	4353278.87108	A	
173	IGEL 19352S001	4645951.43824	-165574.52467	4352550.40710	A	
178	ISPS 19484M001	4640596.48775	-206963.79731	4356391.90056	A	
182	KAST 19499M001	4646949.09145	-240747.29727	4348014.98125	A	
185	LARE 19440M001	4632831.96062	-279026.15810	4360314.41546	A	
186	LAZK 19354S001	4666098.34990	-178186.21216	4330463.66143	A	
190	LEIT 19428M001	4663520.95012	-155858.73897	4334519.87282	A	
242	ORON 19427M001	4659695.79737	-130864.75750	4338948.87702	A	
249	PAS2 19351S001	4644909.06291	-156645.08883	4353623.06412	A	
31	PASA 19351S001	4644909.06636	-156645.08875	4353623.06532	W	
34	RID1 13448M002	4708446.83413	-199490.30428	4284089.72380	W	
35	SALA 13469M001	4803054.49138	-462131.09016	4158379.06503	W	
36	SCDA 10088M002	4639940.50675	-136224.96073	4359552.40216	W	
298	SOPU 19386M001	4643997.92040	-255913.92842	4350063.13295	A	
40	TERU 13487M001	4867391.32938	-95523.37432	4108341.67097	W	
349	VITO 19385M001	4679397.70735	-218436.52595	4314898.35277	A	
44	YEBE 13420M001	4848724.57495	-261631.95052	4123094.31742	W	
45	ZARA 13462M001	4773803.17458	-73506.00376	4215454.08323	W	

5.2 ETRF2000 (ETRS89) Coordinates

European Terrestrial Reference System, 1989 (ETRS89) is realized by ETRF2000 (Boucher and Altamimi, 2011) and (Altamimi, 2017).

ETRF2000 FINAL COORD. wk 2003						18-JUN-18 22:16
LOCAL GEODETIC DATUM: ETRF2000						EPOCH: 2018-05-30 12:00:00
NUM	STATION NAME	X (M)	Y (M)	Z (M)	FLAG	
1	ACOR 13434M001	4594489.86702	-678367.98903	4357065.86864	W	
33	ALDA 19383M001	4687280.51672	-190877.11140	4308106.54025	A	
42	ALSA 19419M001	4677251.19765	-176770.94250	4319079.45796	A	
44	AMUR 19388M001	4661499.80207	-244591.80271	4332269.46784	A	
77	BLAZ 10074M002	4634456.42181	-124345.51868	4365785.04557	A	
78	BIDA 00000M000	4644178.19201	-145778.86537	4354832.07110	A	
88	BRZR 19387M001	4662221.34908	-220770.44619	4333309.02464	A	
9	CACE 13447M001	4899866.80102	-544567.60471	4033769.76632	W	
10	CANT 13438M001	4625924.66090	-307096.77495	4365771.14012	W	
112	CHER 00000M000	4645880.69024	-125722.46987	4353623.95981	A	
15	CREU 13432M001	4715420.53937	273177.51036	4271946.42672	W	
16	EBRE 13410M001	4833520.36345	41536.82746	4147461.28947	W	
131	ELGE 19353S001	4657557.76230	-202242.01947	4338991.45432	A	
133	EMAZ 17001M001	4645924.56430	-276950.40873	4347759.16657	A	
153	GERN 19389M001	4642811.66920	-217223.47574	4353278.46896	A	
173	IGEL 19352S001	4645951.79422	-165575.04702	4352550.00536	A	
178	ISPS 19484M001	4640596.83931	-206964.31924	4356391.49872	A	
182	KAST 19499M001	4646949.43863	-240747.81993	4348014.57855	A	
185	LARE 19440M001	4632832.30429	-279026.67943	4360314.01335	A	
186	LAZK 19354S001	4666098.70298	-178186.73657	4330463.25806	A	
190	LEIT 19428M001	4663521.30600	-155859.26306	4334519.46990	A	
242	ORON 19427M001	4659696.15637	-130865.28113	4338948.47467	A	
249	PAS2 19351S001	4644909.41997	-156645.61105	4353622.66256	A	
31	PASA 19351S001	4644909.42342	-156645.61097	4353622.66376	W	
34	RID1 13448M002	4708447.18170	-199490.83301	4284089.31707	W	
35	SALA 13469M001	4803054.80082	-462131.62899	4158378.64824	W	
36	SCDA 10088M002	4639940.86652	-136225.48239	4359552.00120	W	
298	SOPU 19386M001	4643998.26600	-255914.45082	4350062.73029	A	
40	TERU 13487M001	4867391.67694	-95523.91863	4108341.25376	W	
349	VITO 19385M001	4679398.05484	-218437.05182	4314897.94795	A	
44	YEBE 13420M001	4848724.90472	-261632.49344	4123093.89964	W	
45	ZARA 13462M001	4773803.53180	-73506.53866	4215453.67316	W	

5.3 ETRF2014 (ETRS89) Coordinates

European Terrestrial Reference System, 1989 (ETRS89) is realized by ETRF2014 (Boucher and Altamimi, 2011) and (Altamimi, 2017) (Altamimi, 2017).

ETRF2014 FINAL COORD. wk 2003		18-JUN-18 22:16			
LOCAL GEODETIC DATUM: ETRF2014		EPOCH: 2018-05-30 12:00:00			
NUM	STATION NAME	X (M)	Y (M)	Z (M)	FLAG
1	ACDR 13434M001	4594489.82422	-678368.02801	4357065.91660	W
33	ALDA 19383M001	4687280.47180	-190877.15166	4308106.58811	A
42	ALSA 19419M001	4677251.15278	-176770.98284	4319079.50585	A
44	AMUR 19388M001	4661499.75754	-244591.84290	4332269.51574	A
77	BIAZ 10074M002	4634456.37720	-124345.55936	4365785.09358	A
78	BIDA 00000M000	4644178.14736	-145778.90595	4354832.11908	A
88	BRZR 19387M001	4662221.30448	-220770.48645	4333309.07254	A
9	CACE 13447M001	4899866.75490	-544567.64299	4033769.81363	W
10	CANT 13438M001	4625924.61688	-307096.81506	4365771.18808	W
112	CHER 00000M000	4645880.64551	-125722.51051	4353624.00780	A
15	CREU 13432M001	4715420.49269	273177.46868	4271946.47480	W
16	EBRE 13410M001	4833520.31638	41536.78698	4147461.33713	W
131	ELGE 19353S001	4657557.71769	-202242.05980	4338991.50224	A
133	EMAZ 17001M001	4645924.52002	-276950.44886	4347759.21449	A
153	GERN 19389M001	4642811.62477	-217223.51609	4353278.51691	A
173	IGEL 19352S001	4645951.74962	-165575.08752	4352550.05332	A
178	ISPS 19484M001	4640596.79487	-206964.35962	4356391.54669	A
182	KAST 19499M001	4646949.39423	-240747.86018	4348014.62649	A
185	LARE 19440M001	4632832.26013	-279026.71961	4360314.06130	A
186	LAZK 19354S001	4666098.65822	-178186.77696	4330463.30597	A
190	LEIT 19428M001	4663521.26120	-155859.30353	4334519.51783	A
242	ORON 19427M001	4659696.11153	-130865.32170	4338948.52262	A
249	PAS2 19351S001	4644909.37535	-156645.65158	4353622.71053	A
31	PASA 19351S001	4644909.37880	-156645.65150	4353622.71173	W
34	RI01 13448M002	4708447.13660	-199490.87317	4284089.36488	W
35	SALA 13469M001	4803054.75549	-462131.66791	4158378.69576	W
36	SOA 10088M002	4639940.82188	-136225.52301	4359552.04919	W
298	SOPU 19386M001	4643998.22167	-255914.49103	4350062.77823	A
40	TERU 13487M001	4867391.62996	-95523.95853	4108341.30128	W
349	VITO 19385M001	4679398.01007	-218437.09202	4314897.99582	A
44	YEBE 13420M001	4848724.85841	-261632.53286	4123093.94713	W
45	ZARA 13462M001	4773803.48568	-73506.57899	4215453.72089	W

6 Quality Control

6.1 Mean and Daily Repeatabilities

In this section, the mean and daily repeatabilities of the sites are shown. Repeatabilities refer to the IGS14 solution and are given with respect the Local frame (North-East-Up).

ARA LAC 2003 WEEK FINAL COMBINATION: PRECISE ORBITS 18-JUN-18 22:16

Station	#Days	Weekday 0123456	Repeatability (mm)		
			N	E	U
ACOR 13434M001	7	XXXXXX	1.03	1.01	4.13
ALDA 19383M001	7	XXXXXX	2.09	1.31	3.47
ALSA 19419M001	7	XXXXXX	0.58	0.89	2.37
AMUR 19388M001	7	XXXXXX	0.86	1.54	3.60
BLAZ 10074M002	7	XXXXXX	0.64	1.06	2.86
BIDA 00000M000	7	XXXXXX	0.75	1.18	3.20
BRZR 19387M001	6	X XXXX	0.70	1.38	4.19
CACE 13447M001	6	X XXXX	1.26	0.95	3.18
CANT 13438M001	6	X XXXX	0.93	1.19	4.56
CHER 00000M000	7	XXXXXX	0.88	1.03	2.02
CREU 13432M001	6	X XXXX	2.04	0.57	3.70
EBRE 13410M001	6	X XXXX	0.80	0.85	5.13
ELGE 19353S001	6	X XXXX	1.04	0.83	3.48
EMAZ 17001M001	7	XXXXXX	1.44	0.91	3.58
GERN 19389M001	6	X XXXX	0.41	1.11	3.26
IGEL 19352S001	6	X XXXX	0.79	0.98	2.85
ISPS 19484M001	6	X XXXX	0.87	0.90	3.12
KAST 19499M001	7	XXXXXX	1.03	1.56	2.77
LARE 19440M001	7	XXXXXX	1.51	1.15	5.75
LAZK 19354S001	6	X XXXX	0.77	0.89	3.51
LEIT 19428M001	7	XXXXXX	1.30	0.95	3.34
ORON 19427M001	7	XXXXXX	0.58	0.96	3.54
PAS2 19351S001	6	XXXXXX	0.87	0.99	3.46
PASA 19351S001	6	X XXXX	0.66	0.74	3.24
RI01 13448M002	6	X XXXX	0.33	0.56	3.42
SALA 13469M001	7	XXXXXX	0.34	0.94	3.51
SCOA 10088M002	6	X XXXX	0.76	0.97	3.91
SOPU 19386M001	6	X XXXX	0.84	0.99	2.56
TERU 13487M001	7	XXXXXX	0.50	1.32	3.09
VITD 19385M001	7	XXXXXX	0.96	1.02	3.69
YEBE 13420M001	7	XXXXXX	0.52	0.68	2.94
ZARA 13462M001	6	X XXXX	0.98	1.00	2.49

Comparison of individual solutions:

ACOR 13434M001	N	1.03	0.37	-0.90	-0.12	1.60	-1.66	0.31	-0.16
ACOR 13434M001	E	1.01	1.56	0.74	-0.14	1.04	0.17	1.17	0.79
ACOR 13434M001	U	4.13	-3.40	-0.48	0.55	4.44	6.06	5.81	-0.11
ALDA 19383M001	N	2.09	3.90	1.82	-0.23	-0.03	-0.10	-1.78	-2.12
ALDA 19383M001	E	1.31	-1.25	0.50	1.42	0.82	-0.68	2.29	0.15
ALDA 19383M001	U	3.47	3.07	-3.22	-2.25	4.84	4.17	-2.58	-0.18
ALSA 19419M001	N	0.58	0.34	0.25	-0.62	1.15	-0.03	0.06	0.37
ALSA 19419M001	E	0.89	-0.55	1.26	1.22	-0.21	0.06	1.04	0.48
ALSA 19419M001	U	2.37	-0.11	-1.24	-0.38	2.54	4.60	-1.97	-0.68
AMUR 19388M001	N	0.86	-0.56	-0.56	1.49	0.71	-0.27	0.28	0.97
AMUR 19388M001	E	1.54	1.65	2.72	-0.84	-0.45	-0.56	1.44	-0.89
AMUR 19388M001	U	3.60	1.41	3.25	-1.34	-3.29	1.39	-2.11	6.79
BLAZ 10074M002	N	0.64	-0.86	-0.00	0.85	-0.21	-0.41	0.71	0.48
BLAZ 10074M002	E	1.06	1.68	1.52	-0.24	0.41	0.21	1.05	0.51
BLAZ 10074M002	U	2.86	2.63	-1.87	-0.62	0.40	5.67	-0.90	2.28
BIDA 00000M000	N	0.75	-0.53	0.55	0.93	0.32	-0.45	0.89	-0.91
BIDA 00000M000	E	1.18	-0.70	1.47	0.81	1.91	-0.03	0.85	0.80
BIDA 00000M000	U	3.20	3.29	1.56	3.09	1.96	0.89	-5.66	1.44
BRZR 19387M001	N	0.70	-0.94		0.91	0.60	0.25	-0.19	0.54
BRZR 19387M001	E	1.38	1.08		1.67	1.49	0.56	0.80	-1.55
BRZR 19387M001	U	4.19	3.60		-4.06	0.16	3.46	-0.99	6.73
CACE 13447M001	N	1.26	0.90		1.20	-1.96	-0.94	-0.79	0.63
CACE 13447M001	E	0.95	0.26		-0.05	-0.12	0.79	0.30	-1.93
CACE 13447M001	U	3.18	3.39		-2.22	-1.28	-0.09	-3.15	-4.74
CANT 13438M001	N	0.93	-0.89		0.79	0.79	-1.36	0.60	-0.24
CANT 13438M001	E	1.19	1.72		0.76	1.01	0.61	-0.47	-1.38
CANT 13438M001	U	4.56	4.29		-0.45	-0.83	4.61	-2.19	7.67
CHER 00000M000	N	0.88	-0.65	-1.26	0.25	-0.11	0.49	1.51	0.27
CHER 00000M000	E	1.03	1.70	0.90	0.43	0.32	0.48	-0.32	1.41
CHER 00000M000	U	2.02	0.48	-0.74	1.04	-1.14	2.05	1.81	3.71
CREU 13432M001	N	2.04	-0.85		-0.08	-0.49	4.04	-1.90	-0.19
CREU 13432M001	E	0.57	0.25		-0.21	-0.32	-1.09	0.12	-0.48
CREU 13432M001	U	3.70	2.82		-0.32	-4.61	-3.68	4.09	-2.98
EBRE 13410M001	N	0.80	-0.30		0.92	-1.00	0.57	-0.15	-0.95
EBRE 13410M001	E	0.85	0.96		0.24	0.17	-0.66	-1.35	-0.60
EBRE 13410M001	U	5.13	-1.50		-3.48	9.35	2.98	-4.54	0.28
ELGE 19353S001	N	1.04	-0.90		0.15	-0.17	0.07	-0.24	2.13
ELGE 19353S001	E	0.83	0.58		1.16	1.16	0.36	0.57	0.05
ELGE 19353S001	U	3.48	0.73		1.44	2.33	6.73	-2.66	-0.21
EMAZ 17001M001	N	1.44	2.04	-1.25	-0.95	-0.69	-0.79	1.97	-0.92
EMAZ 17001M001	E	0.91	-0.94	-0.95	0.52	-1.45	-0.82	0.39	-0.09
EMAZ 17001M001	U	3.58	-7.56	0.51	1.77	-2.10	-2.41	2.32	-0.72
GERN 19389M001	N	0.41	0.33		0.04	0.67	-0.03	0.24	-0.48
GERN 19389M001	E	1.11	-0.20		0.76	0.66	1.08	1.96	-0.40
GERN 19389M001	U	3.26	0.41		-0.29	-1.17	3.13	0.45	6.43
IGEL 19352S001	N	0.79	-1.25		0.84	0.00	0.59	-0.03	0.70
IGEL 19352S001	E	0.98	-0.15		1.03	0.80	0.97	1.43	-0.31
IGEL 19352S001	U	2.85	-1.04		0.66	0.46	3.75	-0.17	4.97
ISPS 19484M001	N	0.87	-0.11		0.72	0.30	0.35	0.97	-1.44
ISPS 19484M001	E	0.90	0.41		0.85	0.88	0.90	1.20	-0.35
ISPS 19484M001	U	3.12	-0.30		2.42	2.94	5.58	-0.60	-1.59
KAST 19499M001	N	1.03	1.47	1.81	-0.60	-0.45	-0.63	-0.05	0.12
KAST 19499M001	E	1.56	1.38	2.99	-0.88	0.09	-0.07	-1.75	0.22
KAST 19499M001	U	2.77	0.35	3.22	-0.28	-1.76	-0.72	2.07	5.23
LARE 19440M001	N	1.51	-2.33	0.41	2.17	-0.26	0.12	1.56	0.91
LARE 19440M001	E	1.15	0.77	1.33	0.62	0.97	-0.32	1.65	1.19
LARE 19440M001	U	5.75	6.51	-5.90	-0.18	0.79	3.20	5.59	10.49
LAZK 19354S001	N	0.77	-0.57		1.47	0.25	-0.46	0.02	0.44
LAZK 19354S001	E	0.89	-0.33		1.10	1.18	0.88	0.57	0.33

LAZK	19354S001	U	3.51	3.55		3.76	0.72	3.34	1.43	-4.58
LEIT	19428M001	N	1.30	-1.53	-0.52	1.49	1.54	1.17	-0.51	-1.14
LEIT	19428M001	E	0.95	1.27	1.25	0.52	1.26	0.39	0.48	-0.14
LEIT	19428M001	U	3.34	-1.89	-2.81	2.70	3.60	-0.34	0.96	5.86
ORDN	19427M001	N	0.58	-0.43	-0.30	0.67	0.60	-0.51	-0.14	0.80
ORDN	19427M001	E	0.96	1.13	1.13	1.22	0.02	0.38	-0.03	1.14
ORDN	19427M001	U	3.54	1.11	-2.09	-2.12	-1.09	3.22	1.65	7.13
PAS2	19351S001	N	0.87		0.58	1.09	-0.48	-0.49	-0.61	1.19
PAS2	19351S001	E	0.99		1.47	-0.01	1.19	0.68	0.89	0.32
PAS2	19351S001	U	3.46		-3.72	1.99	0.50	5.90	-1.31	2.32
PASA	19351S001	N	0.66	-0.59		0.73	-0.17	0.54	-0.57	0.79
PASA	19351S001	E	0.74	0.56		0.53	0.63	0.28	1.21	0.47
PASA	19351S001	U	3.24	1.82		1.40	-0.87	4.58	-2.54	4.35
RID1	13448M002	N	0.33	-0.01		0.51	-0.11	0.47	0.14	0.21
RID1	13448M002	E	0.56	-0.44		0.45	0.77	0.45	0.46	0.37
RID1	13448M002	U	3.42	7.20		-0.95	-0.56	-0.48	2.25	0.26
SALA	13469M001	N	0.34	0.03	0.21	0.39	-0.43	-0.21	0.39	0.36
SALA	13469M001	E	0.94	-0.54	1.37	-1.33	-0.58	-0.46	-0.08	0.90
SALA	13469M001	U	3.51	-3.83	-0.33	3.63	-3.44	-4.31	2.54	2.98
SCDA	10088M002	N	0.76	-0.35		0.67	-0.30	-0.59	-0.08	1.37
SCDA	10088M002	E	0.97	0.86		-0.03	1.37	0.17	1.43	-0.17
SCDA	10088M002	U	3.91	5.08		0.04	-0.75	4.53	-4.27	3.35
SOPU	19386M001	N	0.84	0.70		1.28	-0.60	-0.60	0.30	0.76
SOPU	19386M001	E	0.99	-0.19		1.45	1.20	0.83	0.46	0.65
SOPU	19386M001	U	2.56	0.59		0.23	2.11	1.51	1.00	4.96
TERU	13487M001	N	0.50	0.15	0.92	-0.41	-0.68	-0.01	-0.02	-0.13
TERU	13487M001	E	1.32	0.99	-2.65	-1.44	-0.19	0.13	-0.46	0.41
TERU	13487M001	U	3.09	6.06	1.36	0.83	0.76	0.54	-3.48	2.20
VITO	19385M001	N	0.96	-0.65	-0.72	0.60	0.93	0.08	-0.12	1.83
VITO	19385M001	E	1.02	1.55	0.10	0.11	0.99	-0.68	-0.71	1.37
VITO	19385M001	U	3.69	0.75	-4.39	-2.13	3.73	1.06	4.18	4.99
YEBE	13420M001	N	0.52	0.28	-0.45	-0.40	-0.94	-0.04	0.52	0.02
YEBE	13420M001	E	0.68	-0.84	0.46	0.22	0.66	0.81	-0.79	-0.25
YEBE	13420M001	U	2.94	1.15	2.60	-5.92	-1.46	-2.42	-0.82	0.07
ZARA	13462M001	N	0.98	0.27		1.04	0.13	-0.36	-0.85	1.66
ZARA	13462M001	E	1.00	1.89		0.57	-0.77	0.04	0.71	0.09
ZARA	13462M001	U	2.49	5.05		-0.83	1.72	0.58	-1.09	-0.60

6.2 Datum verification

In this section, the datum verification is shown. A 3 parameter Helmert 3D (3 translations) is computed to the minimally constrained sites.

LOCAL GEODETIC DATUM: IGS14
RESIDUALS IN LOCAL SYSTEM (NORTH, EAST, UP)

NUM	NAME	FLG	RESIDUALS IN MILLIMETERS		
1	ACOR 13434M001	I W	-0.80	1.87	-0.17
2	ALAC 13433M001	I W	0.06	0.35	-0.83
3	ALBA 13452M001	I W	-0.25	-0.63	0.16
4	ALME 13437M001	I W	-2.09	0.55	3.86
5	BCLN 13412M001	I W	-1.26	0.62	-2.16
6	BELL 13431M001	I W	0.69	1.64	-2.06
7	BORR 13480M001	I W	-0.37	-1.01	-0.55
8	BRST 10004M004	I W	-1.38	-0.09	0.83
9	CACE 13447M001	I W	-0.34	0.62	2.27
10	CANT 13438M001	I W	-0.02	0.22	3.23
11	CARG 19412M001	I W	-0.24	0.74	1.39
12	CASC 13909S001	I W	0.40	-0.89	2.21
13	CEU1 13449M002	I W	0.28	-2.05	-5.45
14	COBA 13453M001	I W	0.21	0.30	-1.27
15	CREU 13432M001	I W	-0.89	1.57	2.48
16	EBRE 13410M001	I W	-0.02	2.51	0.66
17	ESCO 13435M001	I W	-1.70	-1.76	1.14
18	FUNC 13911S001	I W	1.63	-0.03	-5.11
19	GAIA 13902M001	I W	0.16	-1.06	5.30
21	HUEL 13451M001	I W	-0.23	-0.12	1.01
22	IZAN 13109M002	I W	1.01	0.21	-5.86
24	LLIV 13436M001	I W	-1.64	0.36	3.48
25	LPAL 81701M001	I W	-1.34	1.05	-9.56
26	LROC 10023M001	I W	1.43	-0.66	3.86
27	MALA 13443M001	I W	-2.09	0.30	0.30
28	MAS1 31303M002	I W	1.01	0.64	-3.93
30	MELI 19379M001	I W	-0.07	-0.24	0.29
31	PASA 19351S001	I W	-0.90	0.09	3.29
32	PDEL 31906M004	I W	0.62	-0.71	0.27
33	RABT 35001M002	I W	-0.32	-0.91	-2.96
34	RID1 13448M002	I W	0.55	-0.54	0.13
35	SALA 13469M001	I W	0.19	0.07	-0.48
36	SCOA 10088M002	I W	-2.75	-1.33	1.68
38	SONS 13446M001	I W	0.67	1.64	-2.74
39	TERC 131909M001	I W	8.28	-3.86	-3.72
40	TERU 13487M001	I W	0.86	0.68	-0.32
41	VALA 13463M002	I W	-0.60	-0.51	1.08
42	VALE 13439M001	I W	-0.50	0.77	-2.74
43	VIGO 13450M001	I W	0.88	-0.59	0.46
44	YEBE 13420M001	I W	0.36	-0.42	3.52
45	ZARA 13462M001	I W	-0.25	0.02	2.95
46	ZIMM 14001M004	I W	0.77	0.58	4.04
	RMS / COMPONENT		1.64	1.14	3.13
	MEAN		0.00	0.00	0.00
	MIN		-2.75	-3.86	-9.56
	MAX		8.28	2.51	5.30

NUMBER OF PARAMETERS : 3
NUMBER OF COORDINATES : 126
RMS OF TRANSFORMATION : 2.14 MM

BARYCENTER COORDINATES:

LATITUDE : 39 41 12.90
LONGITUDE : - 5 21 29.58
HEIGHT : -48.657 KM

PARAMETERS:

TRANSLATION IN N : 0.01 +- 0.33 MM
TRANSLATION IN E : 0.01 +- 0.33 MM
TRANSLATION IN U : -0.00 +- 0.33 MM

6.3 Adjustment Statistics

In this section, the summary of the global adjustment and not subnetworks are shown. Also, the Helmert parameters of the combined solution with respect the daily solutions are shown.

```
* STATISTICAL PARAMETER-----VALUE(S)-----
NUMBER OF OBSERVATIONS          16224160
NUMBER OF UNKNOWN               222470
NUMBER OF DEGREES OF FREEDOM    16001690
PHASE MEASUREMENTS SIGMA        0.00100
SAMPLING INTERVAL (SECONDS)     180
VARIANCE FACTOR                  2.156521590644015
```

Helmert Transformation Parameters With Respect to Combined Solution:

Sol	Rms (m)	Translation (m)			Rotation (")			Scale (ppm)
		X	Y	Z	X	Y	Z	
1	0.00229	0.0036	-0.0076	-0.0037	0.0001	0.0002	-0.0003	0.00004
2	0.00202	0.0089	-0.0055	-0.0110	0.0001	0.0005	-0.0001	-0.00005
3	0.00196	0.0244	-0.0007	-0.0226	0.0002	0.0011	0.0001	-0.00088
4	0.00179	0.0075	-0.0027	-0.0009	0.0001	0.0002	0.0000	-0.00087
5	0.00211	0.0036	-0.0094	-0.0014	0.0002	0.0001	-0.0002	-0.00037
6	0.00217	0.0145	0.0085	-0.0130	-0.0001	0.0006	0.0003	-0.00048
7	0.00234	0.0049	-0.0108	-0.0028	0.0003	0.0002	-0.0002	-0.00042

Statistics of individual solutions:

File	RMS (m)	DOF	Chi**2/DOF	#Observations authentic / pseudo	#Parameters explicit / implicit / singular
1	0.00146	2333667	2.14	2367587	3 996 32927 0
2	0.00138	1658648	1.91	1684091	3 774 24672 0
3	0.00146	2396598	2.13	2430496	3 1014 32887 0
4	0.00139	2407367	1.95	2441175	3 1005 32806 0
5	0.00135	2386578	1.82	2419753	3 1005 32173 0
6	0.00158	2382776	2.49	2416470	3 1005 32692 0
7	0.00159	2430302	2.54	2464588	3 1005 33284 0

7 Equipment

7.1 Receiver List

Serial numbers not shown.

```
*SITE PT SOLN T DATA_START__ DATA_END____ DESCRIPTION_____ S/N__ FIRMWARE____
ACOR A 1 P 18:147:00000 18:153:86370 LEICA GRX1200PRO -----
ALDA A 1 P 18:147:00000 18:153:86370 LEICA GR10 -----
ALSA A 1 P 18:147:00000 18:153:86370 LEICA GRX1200GGPRO -----
AMUR A 1 P 18:147:00000 18:153:86370 LEICA GR10 -----
BIAZ A 1 P 18:147:00000 18:153:86370 TRI SP90M -----
BIDA A 1 P 18:147:00000 18:153:86370 LEICA GR10 -----
BRZR A 1 P 18:147:00000 18:153:86370 LEICA GR10 -----
CACE A 1 P 18:147:00000 18:153:86370 TRIMBLE NETR9 -----
CANT A 1 P 18:147:00000 18:153:86370 LEICA GR10 -----
CHER A 1 P 18:147:00000 18:153:86370 LEICA GRX1200+GNSS -----
CREU A 1 P 18:147:00000 18:153:86370 LEICA GR50 -----
EBRE A 1 P 18:147:00000 18:153:86370 LEICA GR50 -----
ELGE A 1 P 18:147:00000 18:153:86370 LEICA GR10 -----
EMAZ A 1 P 18:147:00000 18:153:86370 LEICA GR30 -----
GERN A 1 P 18:147:00000 18:153:86370 LEICA GR10 -----
IGEL A 1 P 18:147:00000 18:153:86370 LEICA GR10 -----
ISPS A 1 P 18:147:00000 18:153:86370 TRIMBLE NETR9 -----
KAST A 1 P 18:147:00000 18:153:86370 LEICA GR30 -----
LARE A 1 P 18:147:00000 18:153:86370 LEICA GRX1200GGPRO -----
LAZK A 1 P 18:147:00000 18:153:86370 LEICA GR10 -----
LEIT A 1 P 18:147:00000 18:153:86370 LEICA GRX1200+GNSS -----
ORON A 1 P 18:147:00000 18:153:86370 LEICA GRX1200GGPRO -----
PAS2 A 1 P 18:148:00000 18:153:86370 TPS NET-G3A -----
PASA A 1 P 18:147:00000 18:153:86370 LEICA GR10 -----
RIO1 A 1 P 18:147:00000 18:153:86370 LEICA GR25 -----
SALA A 1 P 18:147:00000 18:153:86370 LEICA GRX1200+GNSS -----
SCOA A 1 P 18:147:00000 18:153:86370 LEICA GR25 -----
SOPU A 1 P 18:147:00000 18:153:86370 LEICA GR10 -----
TERU A 1 P 18:147:00000 18:153:86370 LEICA GRX1200GGPRO -----
VITO A 1 P 18:147:00000 18:153:86370 LEICA GR10 -----
YEBE A 1 P 18:147:00000 18:153:86370 TRIMBLE NETR9 -----
ZARA A 1 P 18:147:00000 18:153:86370 TRIMBLE NETR9 -----
```

7.2 Antennas

Serial number ONLY provided in case individual calibrations are available.

```
*SITE PT SOLN T DATA_START__ DATA_END____ DESCRIPTION_____ S/N__
ACOR A 1 P 18:147:00000 18:153:86370 LEIAT504 LEIS -----
ALDA A 1 P 18:147:00000 18:153:86370 LEIAS10 NONE -----
ALSA A 1 P 18:147:00000 18:153:86370 LEIAX1202GG NONE -----
AMUR A 1 P 18:147:00000 18:153:86370 LEIAS10 NONE -----
```

```

BIAZ A 1 P 18:147:00000 18:153:86370 LEIAR25 LEIT -----
BIDA A 1 P 18:147:00000 18:153:86370 LEIAS10 NONE -----
BRZR A 1 P 18:147:00000 18:153:86370 LEIAS10 NONE -----
CACE A 1 P 18:147:00000 18:153:86370 TRM29659.00 NONE -----
CANT A 1 P 18:147:00000 18:153:86370 LEIAR25.R4 LEIT 25066
CHER A 1 P 18:147:00000 18:153:86370 LEIAX1203+GNSS NONE -----
CREU A 1 P 18:147:00000 18:153:86370 LEIAR25.R4 NONE 26357
EBRE A 1 P 18:147:00000 18:153:86370 LEIAR25.R4 NONE 26359
ELGE A 1 P 18:147:00000 18:153:86370 LEIAR25.R4 LEIT -----
EMAZ A 1 P 18:147:00000 18:153:86370 LEIAS10 NONE -----
GERN A 1 P 18:147:00000 18:153:86370 LEIAS10 NONE -----
IGEL A 1 P 18:147:00000 18:153:86370 LEIAR20 LEIM -----
ISPS A 1 P 18:147:00000 18:153:86370 TRM59900.00 SCIS -----
KAST A 1 P 18:147:00000 18:153:86370 LEIAS10 NONE -----
LARE A 1 P 18:147:00000 18:153:86370 LEIAT504 NONE -----
LAZK A 1 P 18:147:00000 18:153:86370 LEIAR25.R4 LEIT -----
LEIT A 1 P 18:147:00000 18:153:86370 LEIAX1203+GNSS NONE -----
ORDN A 1 P 18:147:00000 18:153:86370 LEIAX1202GG NONE -----
PAS2 A 1 P 18:148:00000 18:153:86370 LEIAR20 LEIM 73034
PASA A 1 P 18:147:00000 18:153:86370 LEIAR20 LEIM 73034
RID1 A 1 P 18:147:00000 18:153:86370 LEIAR25.R4 LEIT 25138
SALA A 1 P 18:147:00000 18:153:86370 LEIAR25 NONE -----
SCDA A 1 P 18:147:00000 18:153:86370 TRM55971.00 NONE -----
SOPU A 1 P 18:147:00000 18:153:86370 LEIAS10 NONE -----
TERU A 1 P 18:147:00000 18:153:86370 LEIAT504GG LEIS -----
VITO A 1 P 18:147:00000 18:153:86370 LEIAS10 NONE -----
YEBE A 1 P 18:147:00000 18:153:86370 TRM29659.00 NONE -----
ZARA A 1 P 18:147:00000 18:153:86370 TRM29659.00 NONE -----

```

7.3 Eccentricities

```

*
*SITE PT SOLN T DATA_START_ DATA_END_ AXE ARP->BENCHMARK(M) UP_----- NORTH_ EAST_-----
ACOR A 1 P 18:147:00000 18:153:86370 UNE 3.0460 0.0000 0.0000
ALDA A 1 P 18:147:00000 18:153:86370 UNE 0.0000 0.0000 0.0000
ALSA A 1 P 18:147:00000 18:153:86370 UNE 0.0000 0.0000 0.0000
AMUR A 1 P 18:147:00000 18:153:86370 UNE 0.0000 0.0000 0.0000
BIAZ A 1 P 18:147:00000 18:153:86370 UNE 0.0000 0.0000 0.0000
BIDA A 1 P 18:147:00000 18:153:86370 UNE 0.0000 0.0000 0.0000
BRZR A 1 P 18:147:00000 18:153:86370 UNE 0.0000 0.0000 0.0000
CACE A 1 P 18:147:00000 18:153:86370 UNE 0.0600 0.0000 0.0000
CANT A 1 P 18:147:00000 18:153:86370 UNE 3.0490 0.0000 0.0000
CHER A 1 P 18:147:00000 18:153:86370 UNE 0.0000 0.0000 0.0000
CREU A 1 P 18:147:00000 18:153:86370 UNE 0.0770 0.0000 0.0000
EBRE A 1 P 18:147:00000 18:153:86370 UNE 0.0770 0.0000 0.0000
ELGE A 1 P 18:147:00000 18:153:86370 UNE 0.0000 0.0000 0.0000
EMAZ A 1 P 18:147:00000 18:153:86370 UNE 0.0350 0.0000 0.0000
GERN A 1 P 18:147:00000 18:153:86370 UNE 0.0000 0.0000 0.0000
IGEL A 1 P 18:147:00000 18:153:86370 UNE 0.0000 0.0000 0.0000
ISPS A 1 P 18:147:00000 18:153:86370 UNE 0.0350 0.0000 0.0000
KAST A 1 P 18:147:00000 18:153:86370 UNE 0.0350 0.0000 0.0000
LARE A 1 P 18:147:00000 18:153:86370 UNE 0.0000 0.0000 0.0000
LAZK A 1 P 18:147:00000 18:153:86370 UNE 0.0000 0.0000 0.0000
LEIT A 1 P 18:147:00000 18:153:86370 UNE 0.0000 0.0000 0.0000
ORDN A 1 P 18:147:00000 18:153:86370 UNE 0.0000 0.0000 0.0000
PAS2 A 1 P 18:148:00000 18:153:86370 UNE 0.0000 0.0000 0.0000
PASA A 1 P 18:147:00000 18:153:86370 UNE 0.0000 0.0000 0.0000
RID1 A 1 P 18:147:00000 18:153:86370 UNE 0.0606 0.0000 0.0000
SALA A 1 P 18:147:00000 18:153:86370 UNE 0.0600 0.0000 0.0000
SCDA A 1 P 18:147:00000 18:153:86370 UNE 0.0000 0.0000 0.0000
SOPU A 1 P 18:147:00000 18:153:86370 UNE 0.0000 0.0000 0.0000
TERU A 1 P 18:147:00000 18:153:86370 UNE 0.0600 0.0000 0.0000
VITO A 1 P 18:147:00000 18:153:86370 UNE 0.0000 0.0000 0.0000
YEBE A 1 P 18:147:00000 18:153:86370 UNE 0.0000 0.0000 0.0000
ZARA A 1 P 18:147:00000 18:153:86370 UNE 3.2590 0.0000 0.0000

```

8 Inconsistencies (logsheet-RINEX metadata)

The following inconsistencies were found comparing the data available in the logsheets and the RINEX headers:

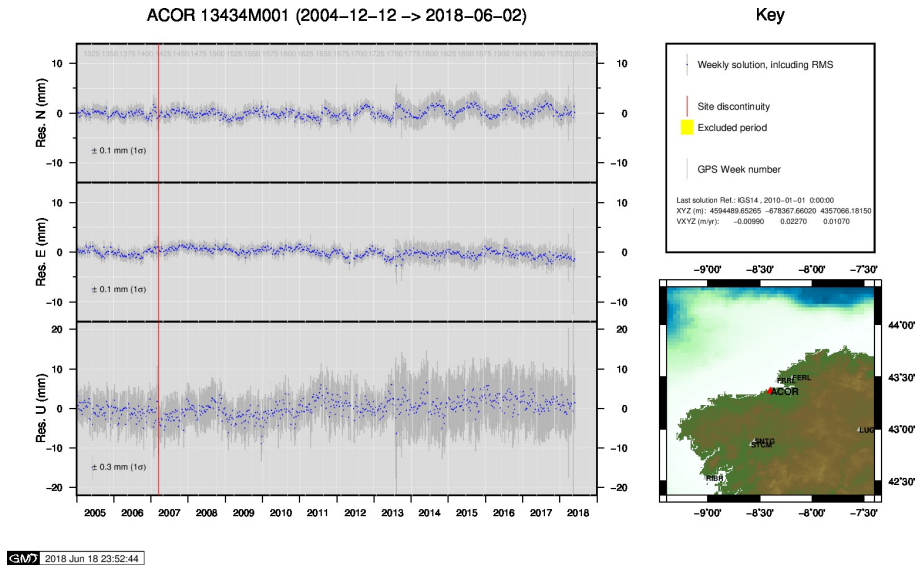
```

2018-06-18 09:37 UTC | PAS21470.180 | RECEIVER TYPE | NET-G3A -> TPS NET-G3A
2018-06-16 22:22 UTC | PAS21480.180 | RECEIVER TYPE | NET-G3A -> TPS NET-G3A
2018-06-17 01:20 UTC | PAS21490.180 | RECEIVER TYPE | NET-G3A -> TPS NET-G3A
2018-06-17 04:47 UTC | PAS21500.180 | RECEIVER TYPE | NET-G3A -> TPS NET-G3A
2018-06-17 07:43 UTC | PAS21510.180 | RECEIVER TYPE | NET-G3A -> TPS NET-G3A
2018-06-18 09:56 UTC | PAS21520.180 | RECEIVER TYPE | NET-G3A -> TPS NET-G3A
2018-06-17 11:01 UTC | PAS21530.180 | RECEIVER TYPE | NET-G3A -> TPS NET-G3A

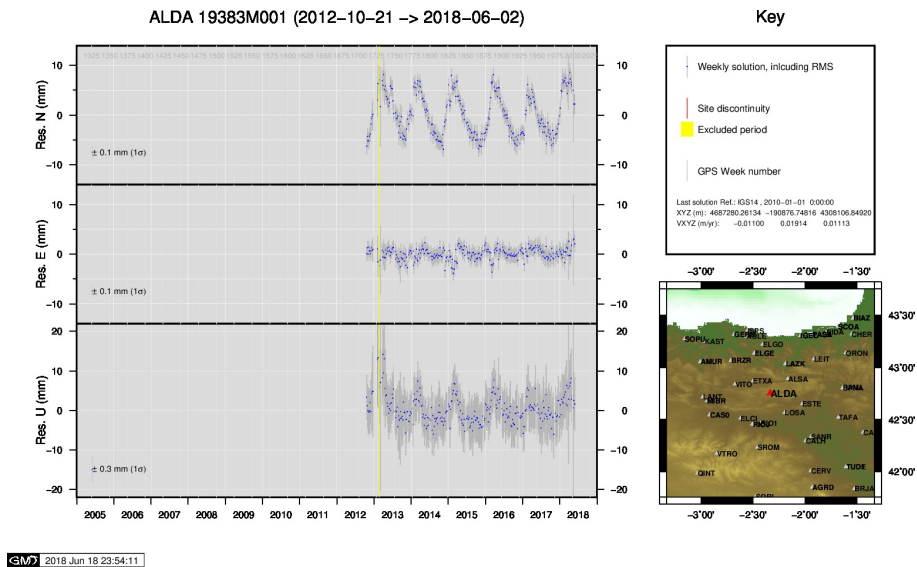
```

9 Cumulative Time Series

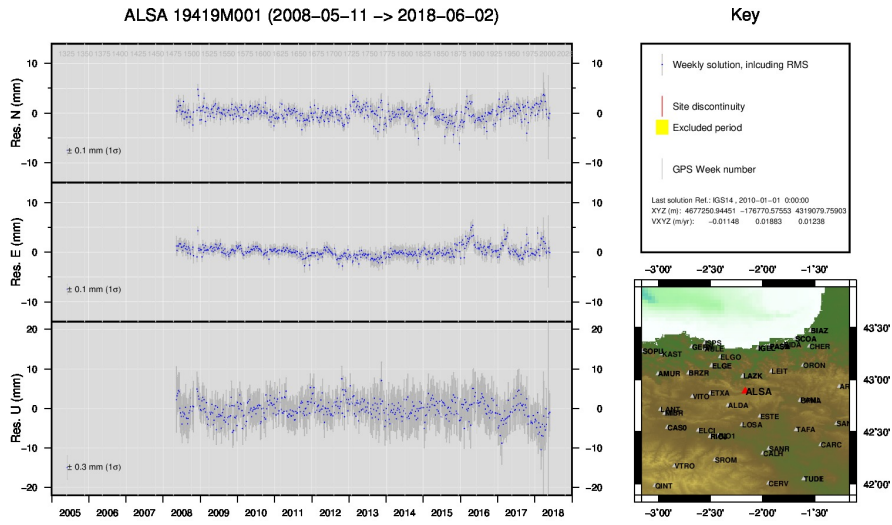
Time series of stations. Latest plots at: <http://geolabpasaia.org/gnss/ARA-net/TSeries/>, or click on the caption of each image.



1) ACOR

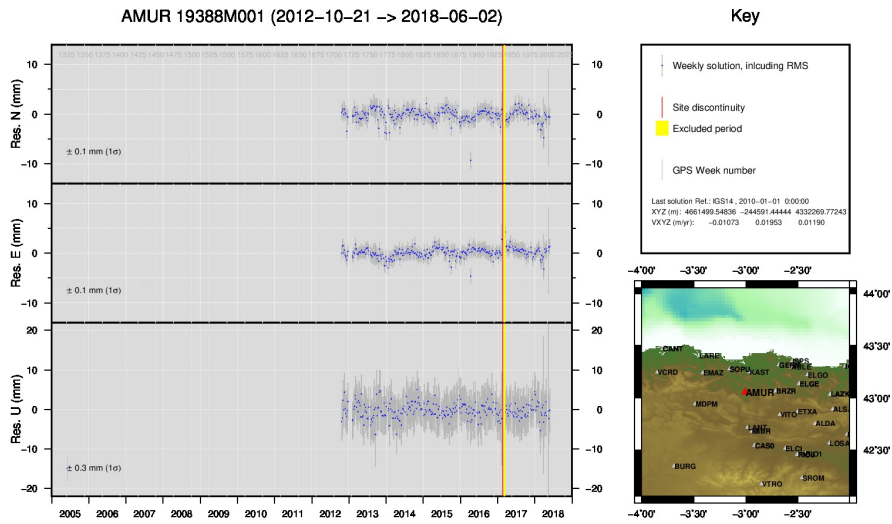


2) ALDA



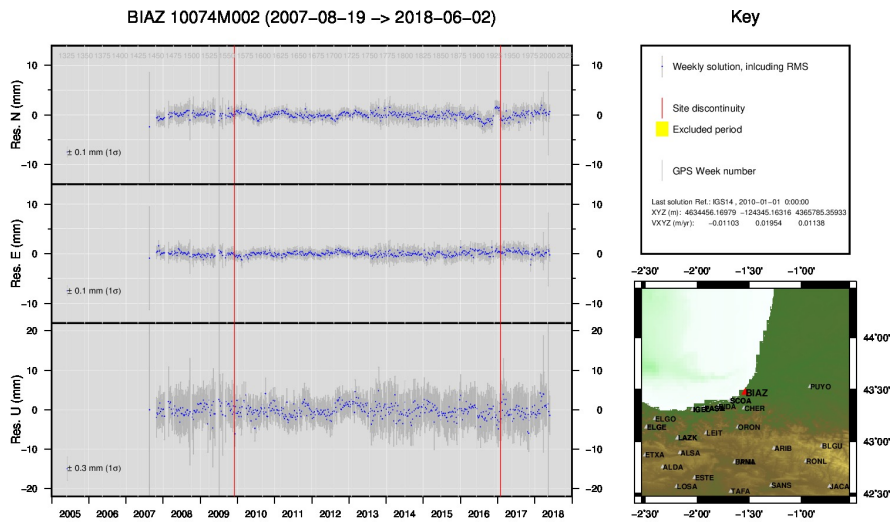
GMW 2018 Jun 18 23:55:12

3) ALSA



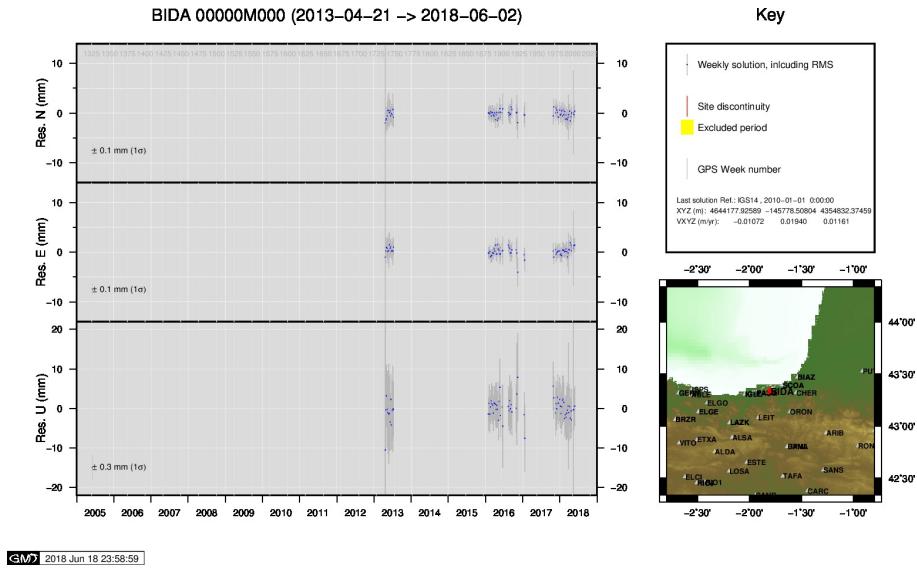
GMW 2018 Jun 18 23:55:25

4) AMUR

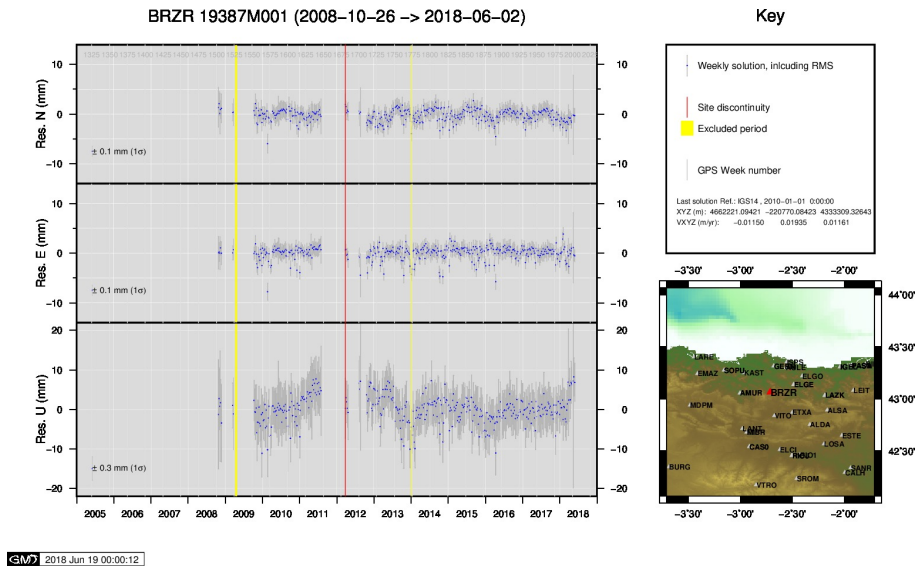


GMW 2018 Jun 18 23:58:52

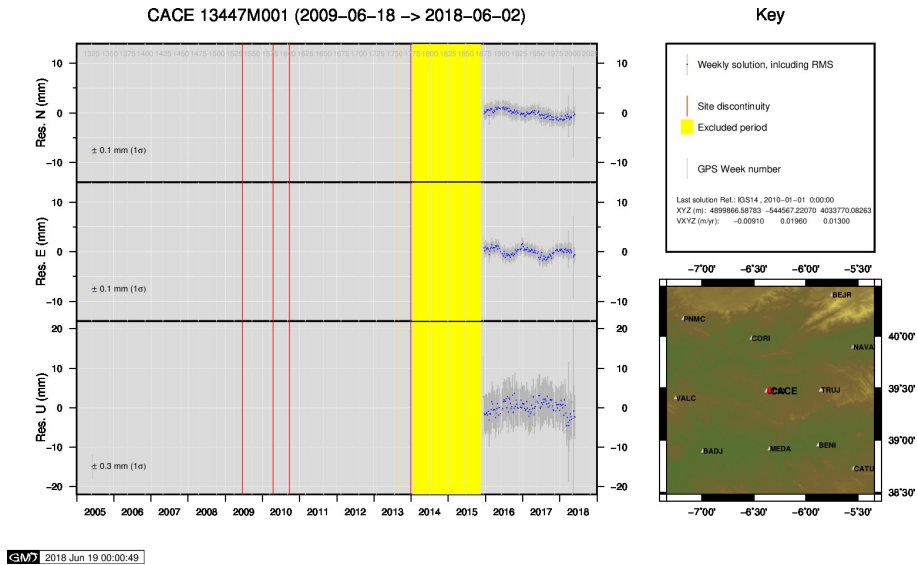
5) BIAZ



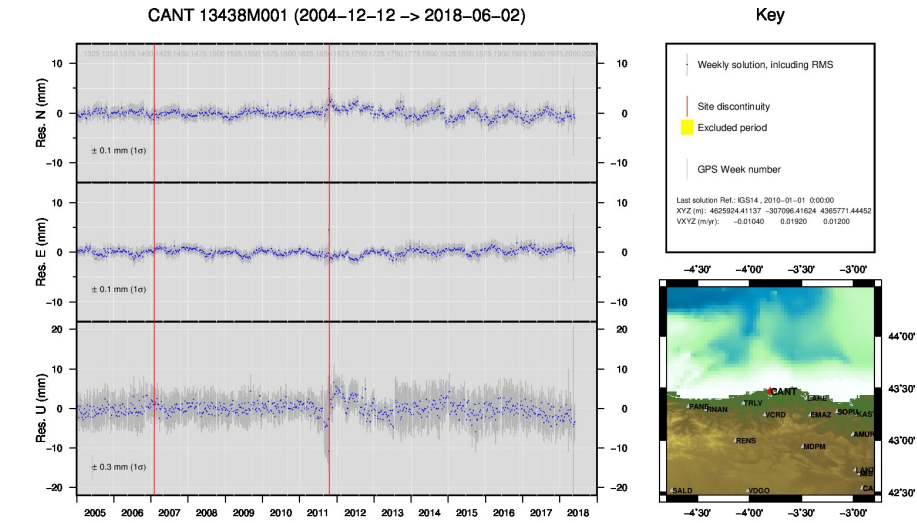
6) BIDA



7) BRZR

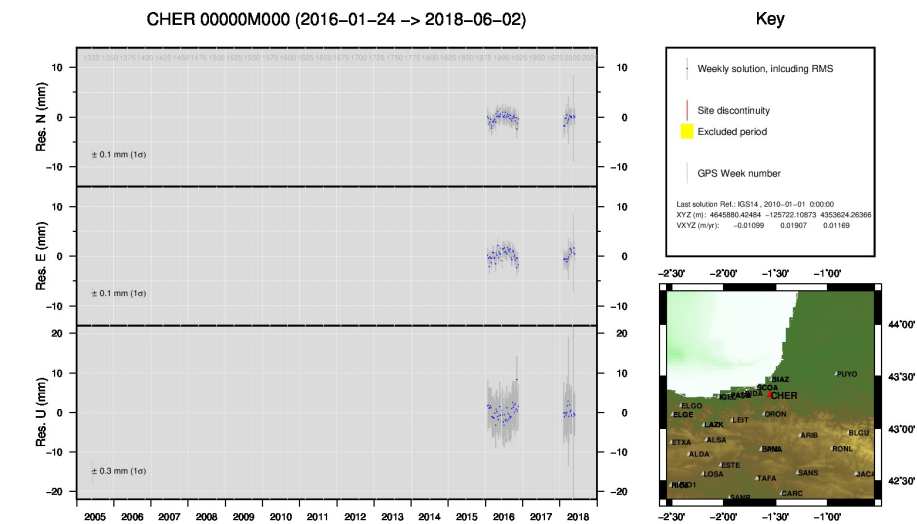


8) CACE



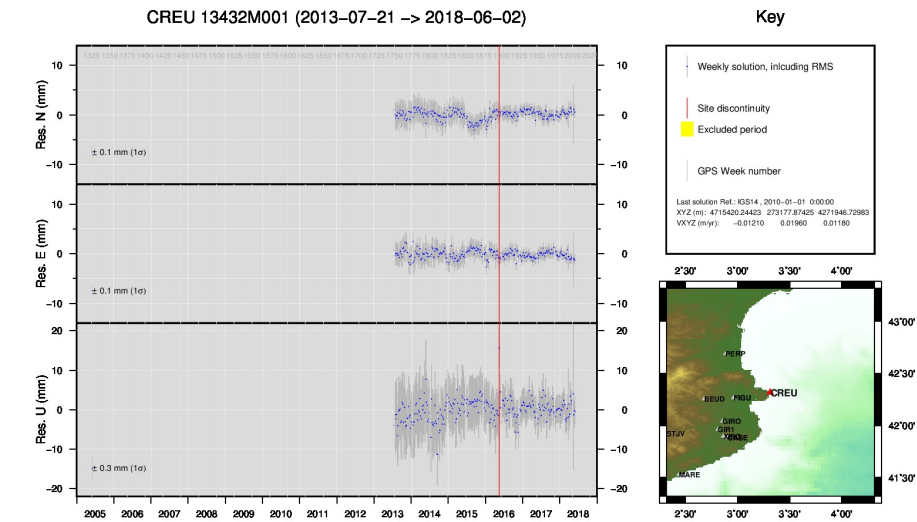
GMW 2018 Jun 19 00:01:12

9) CANT



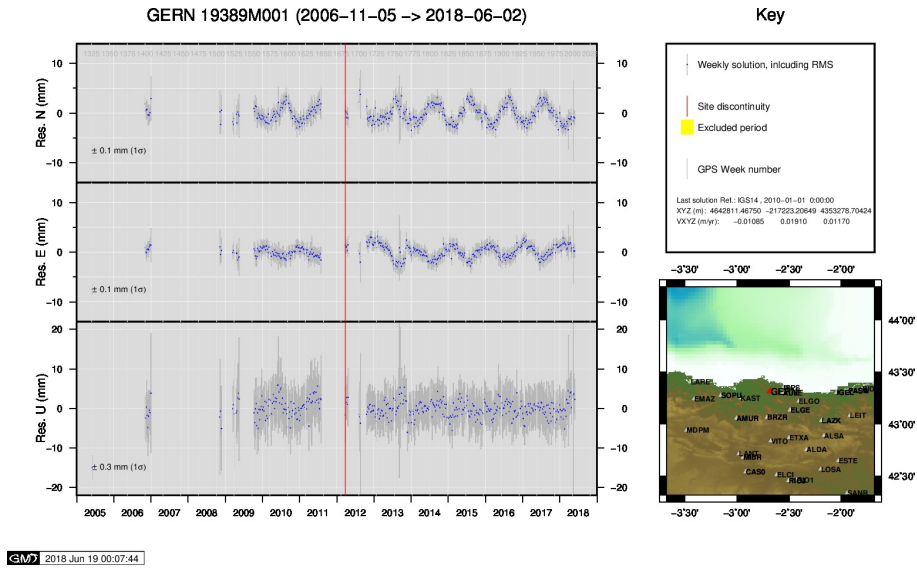
GMW 2018 Jun 19 00:03:01

10) CHER

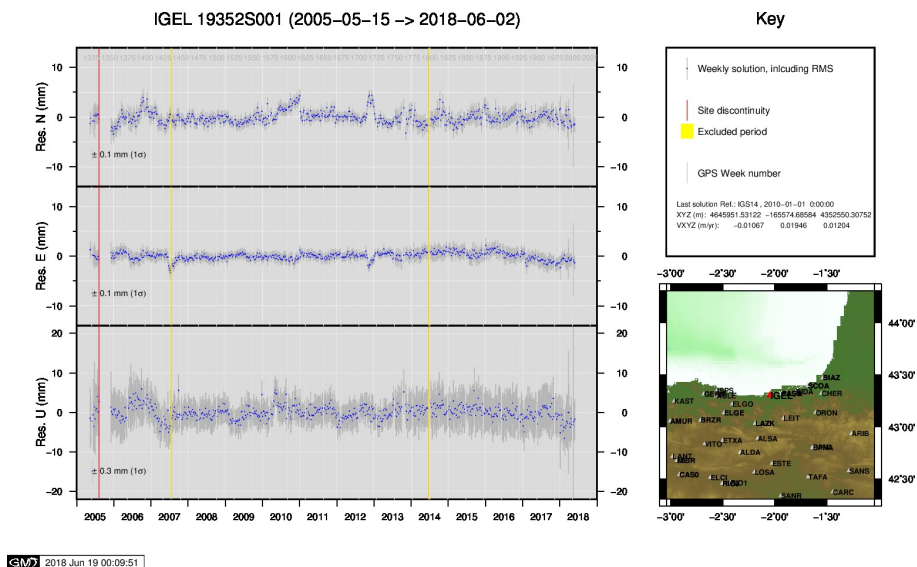


GMW 2018 Jun 19 00:03:38

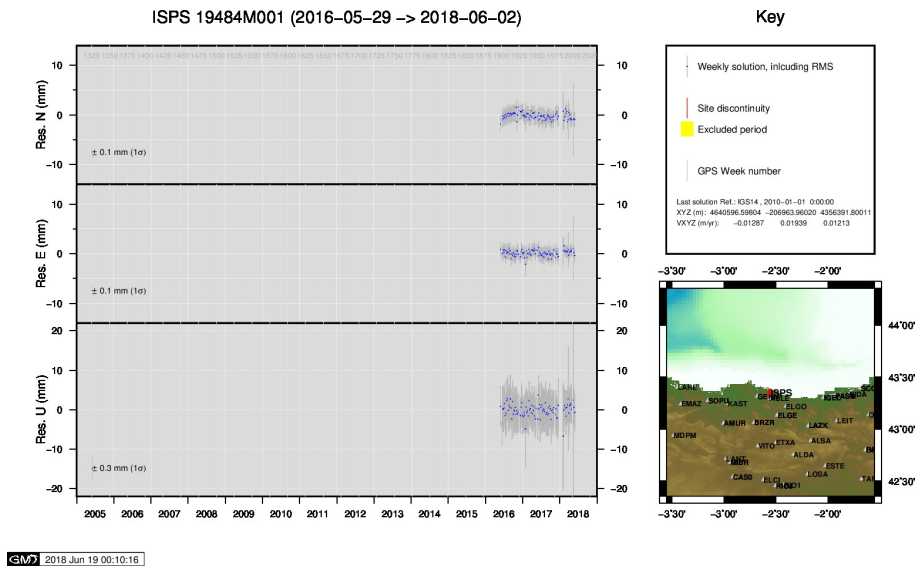
11) CREU



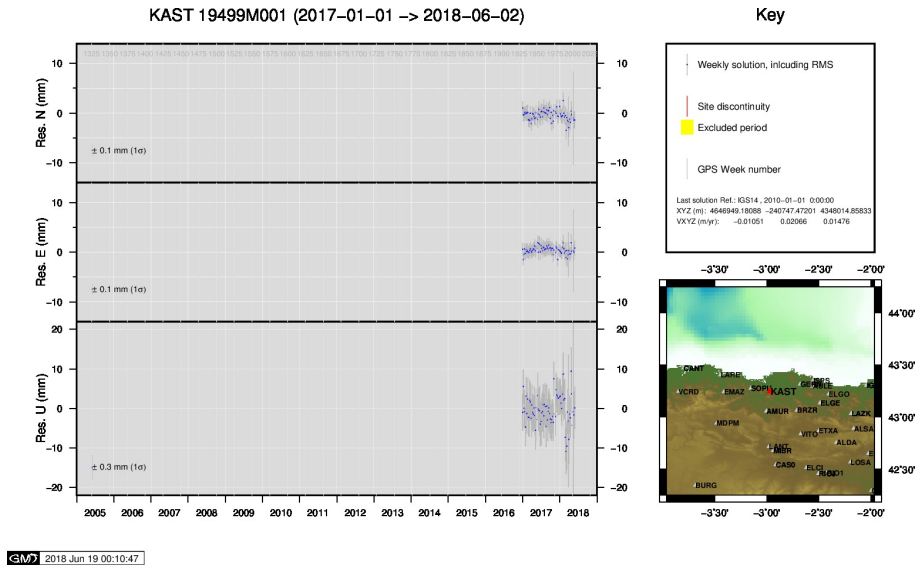
15) GERN



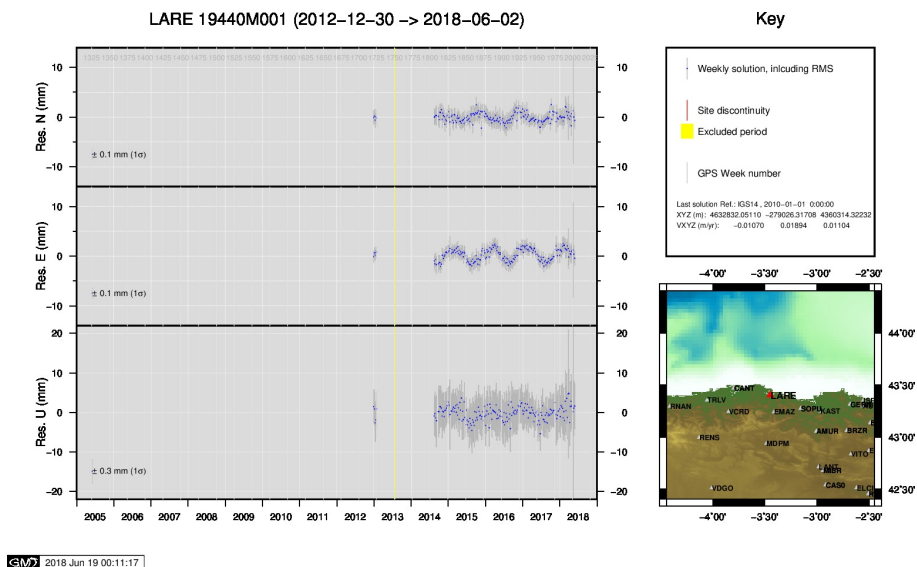
16) IGEL



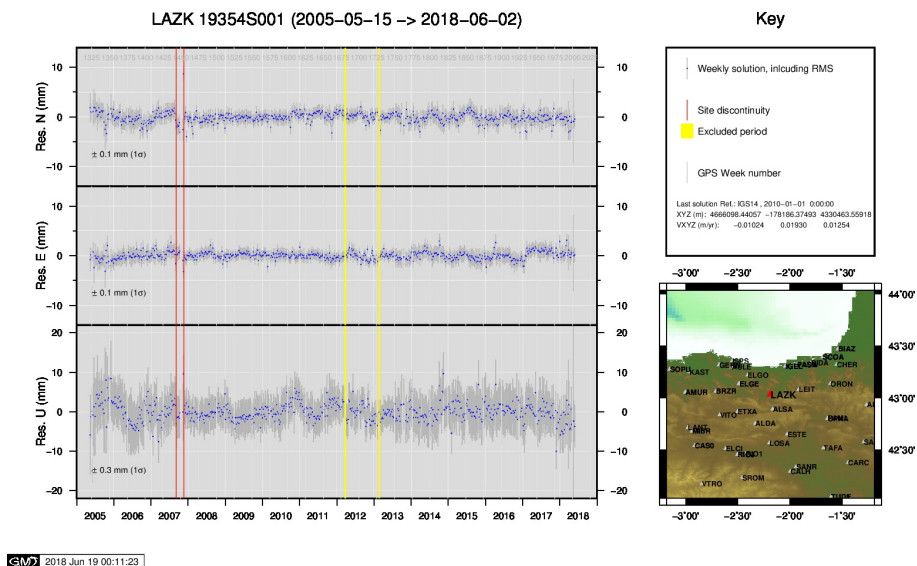
17) ISPS



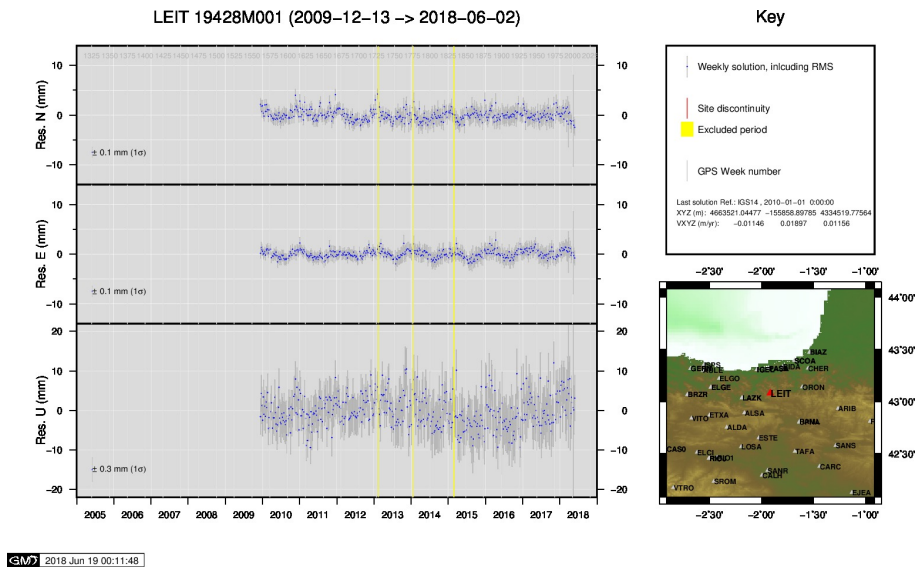
18) KAST



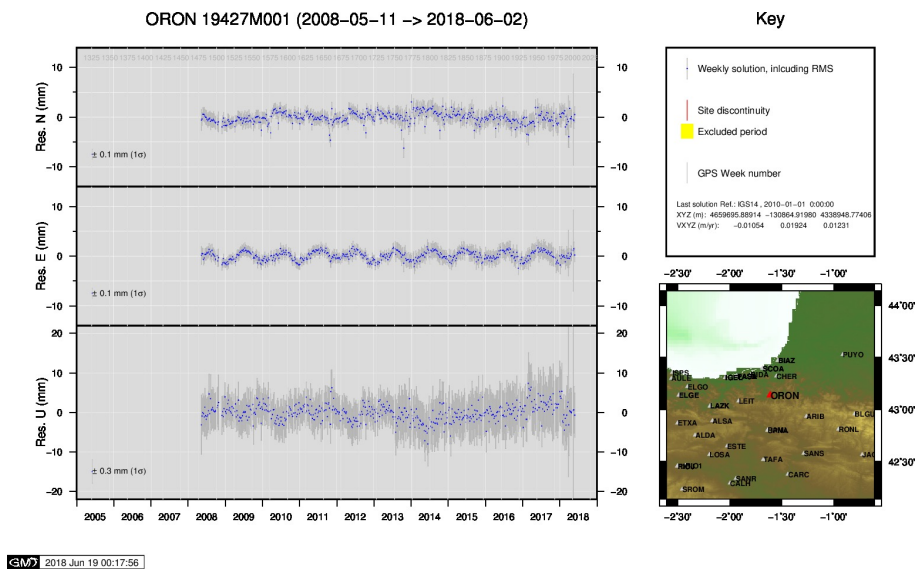
19) LARE



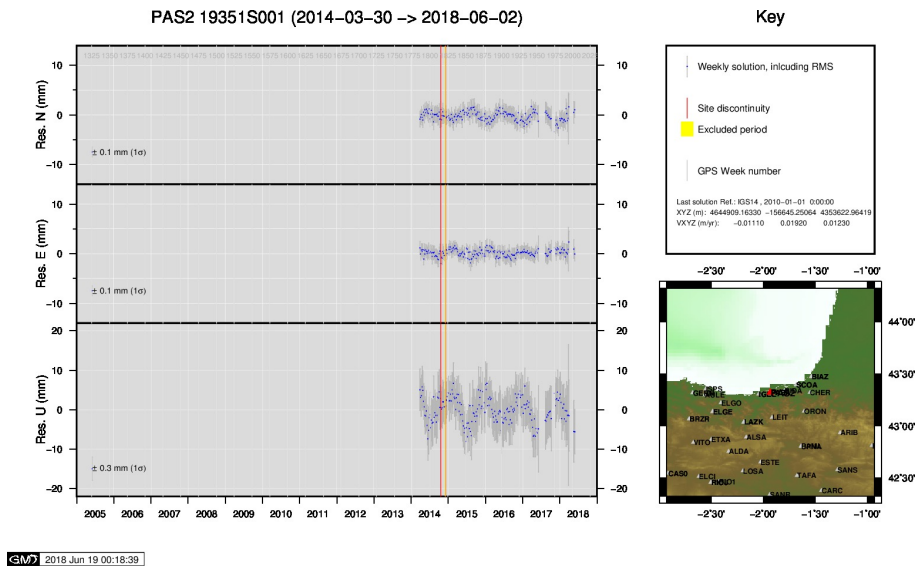
20) LAZK



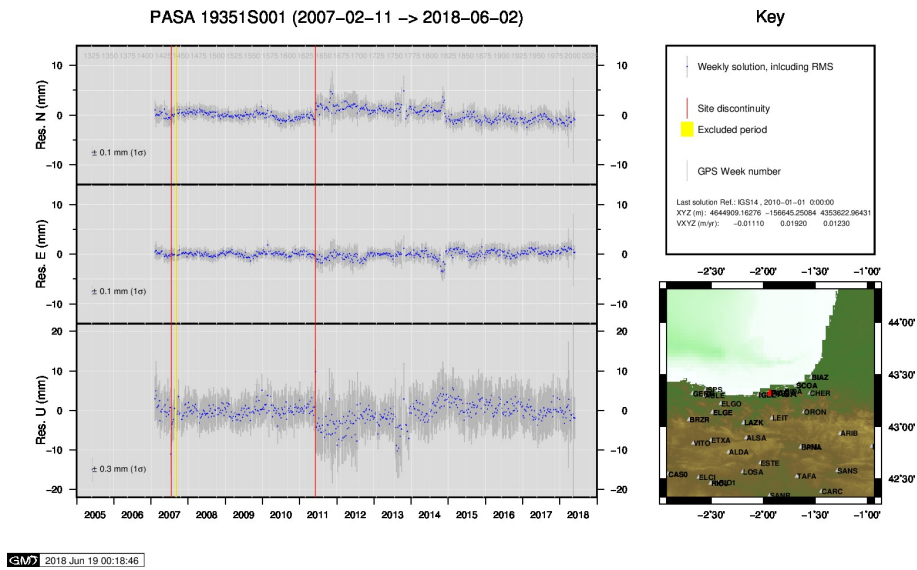
21) LEIT



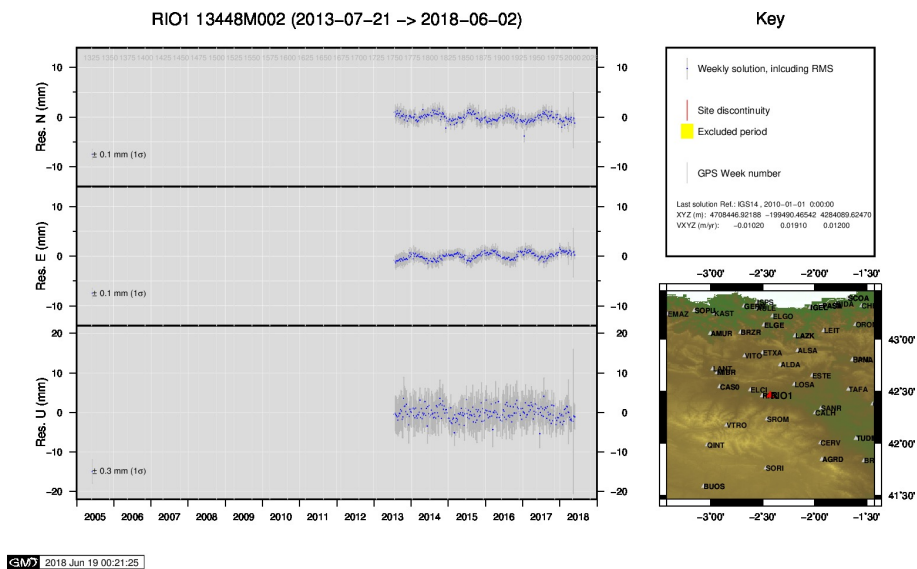
22) ORON



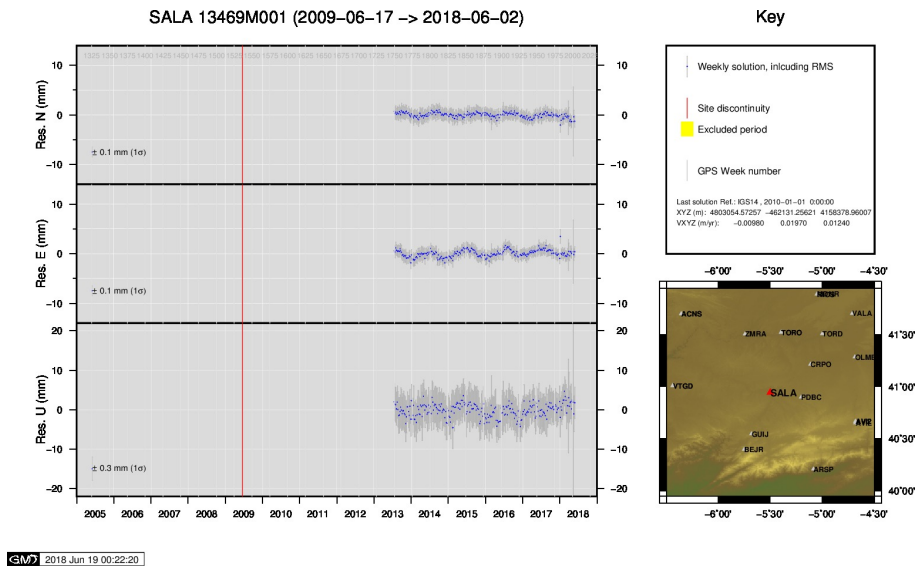
23) PAS2



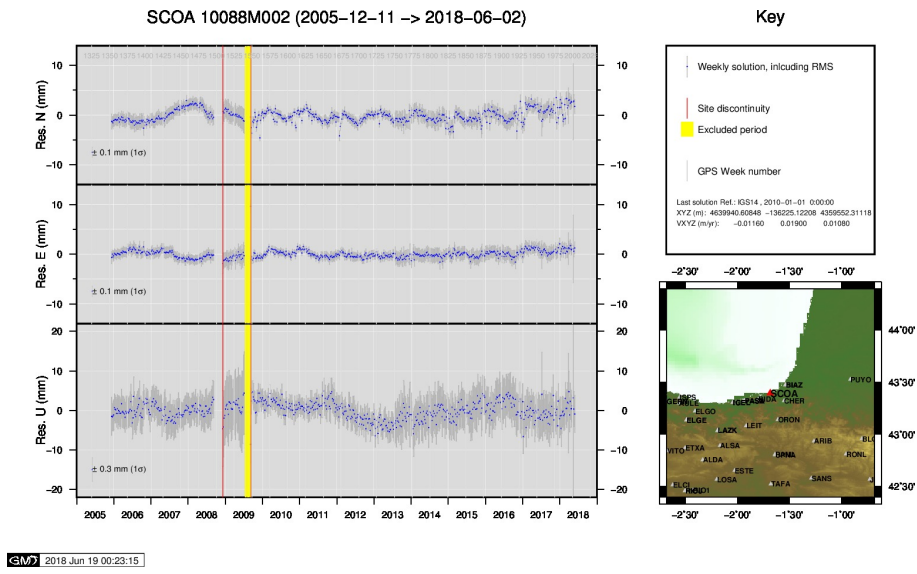
24) PASA



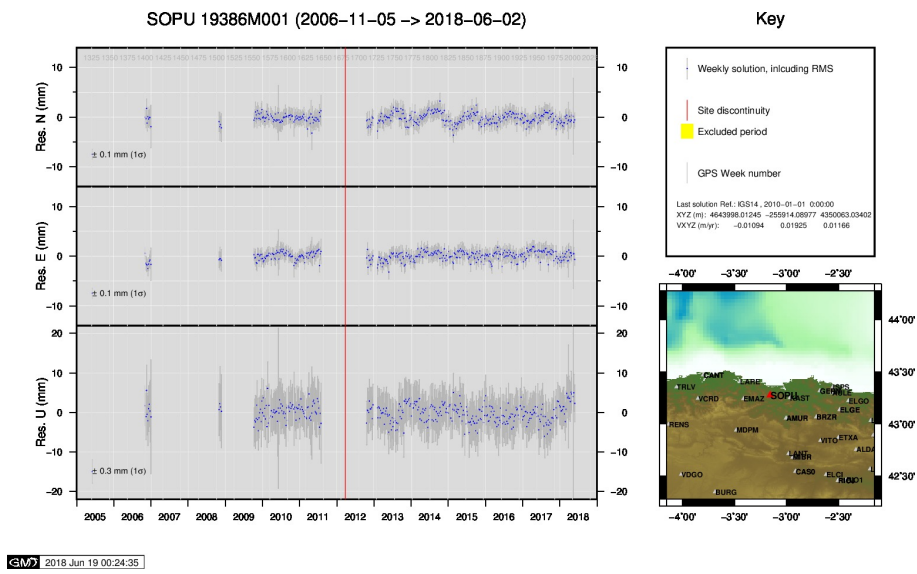
25) RIO1



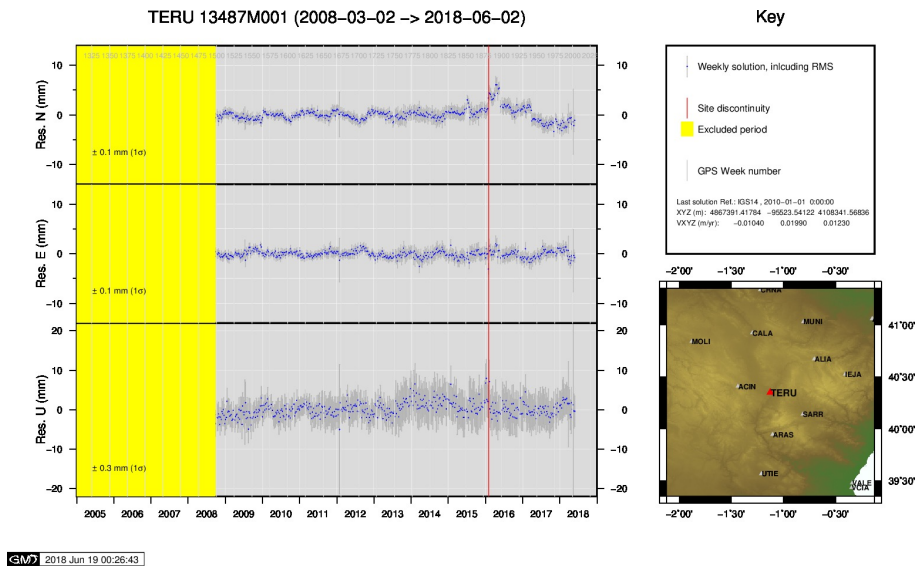
26) SALA



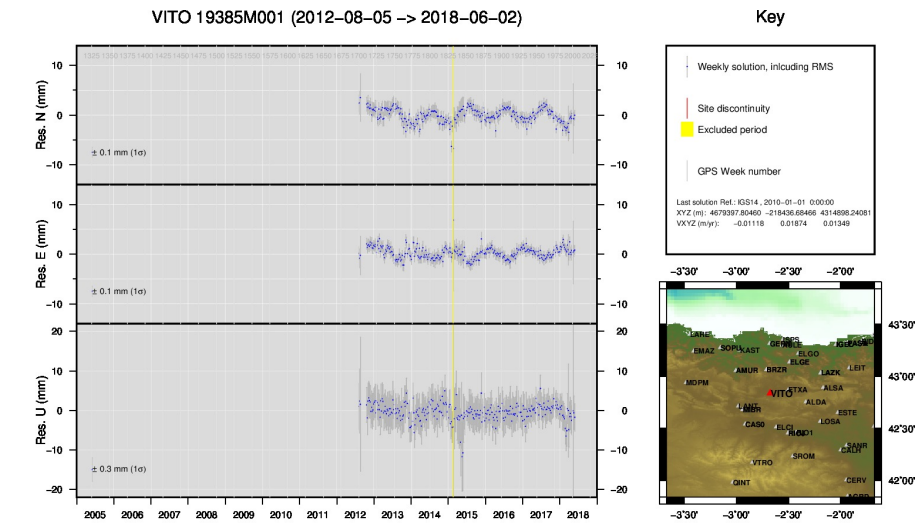
27) SCOA



28) SOPU

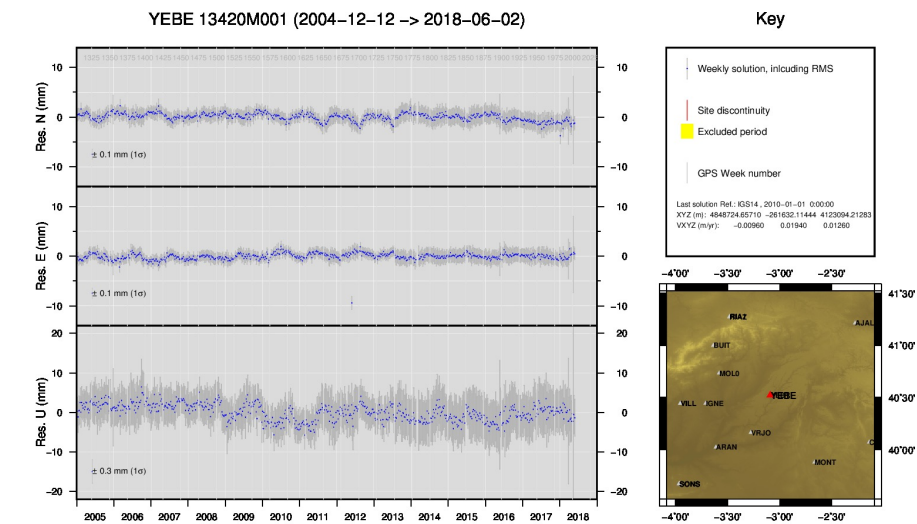


29) TERU



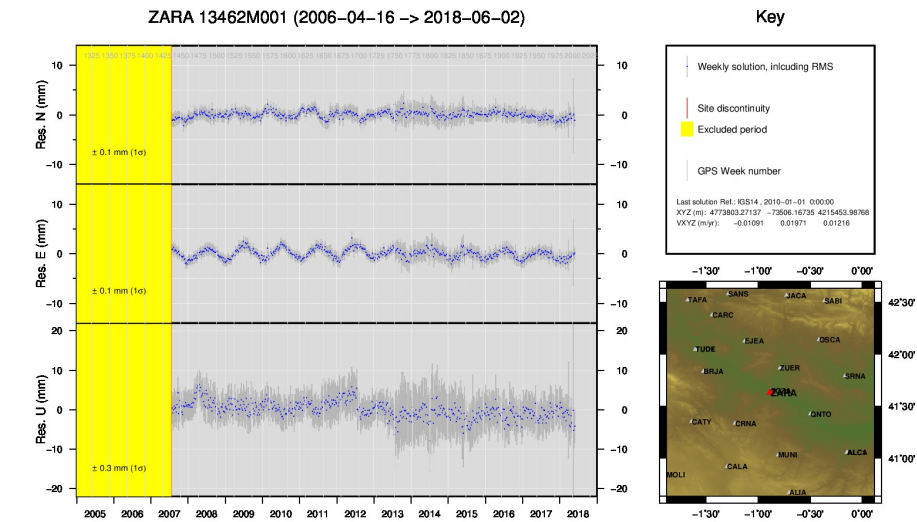
GMW 2018 Jun 19 00:30:10

30) VITO



GMW 2018 Jun 19 00:31:23

31) YEBE



GMW 2018 Jun 19 00:31:30

32) ZARA

